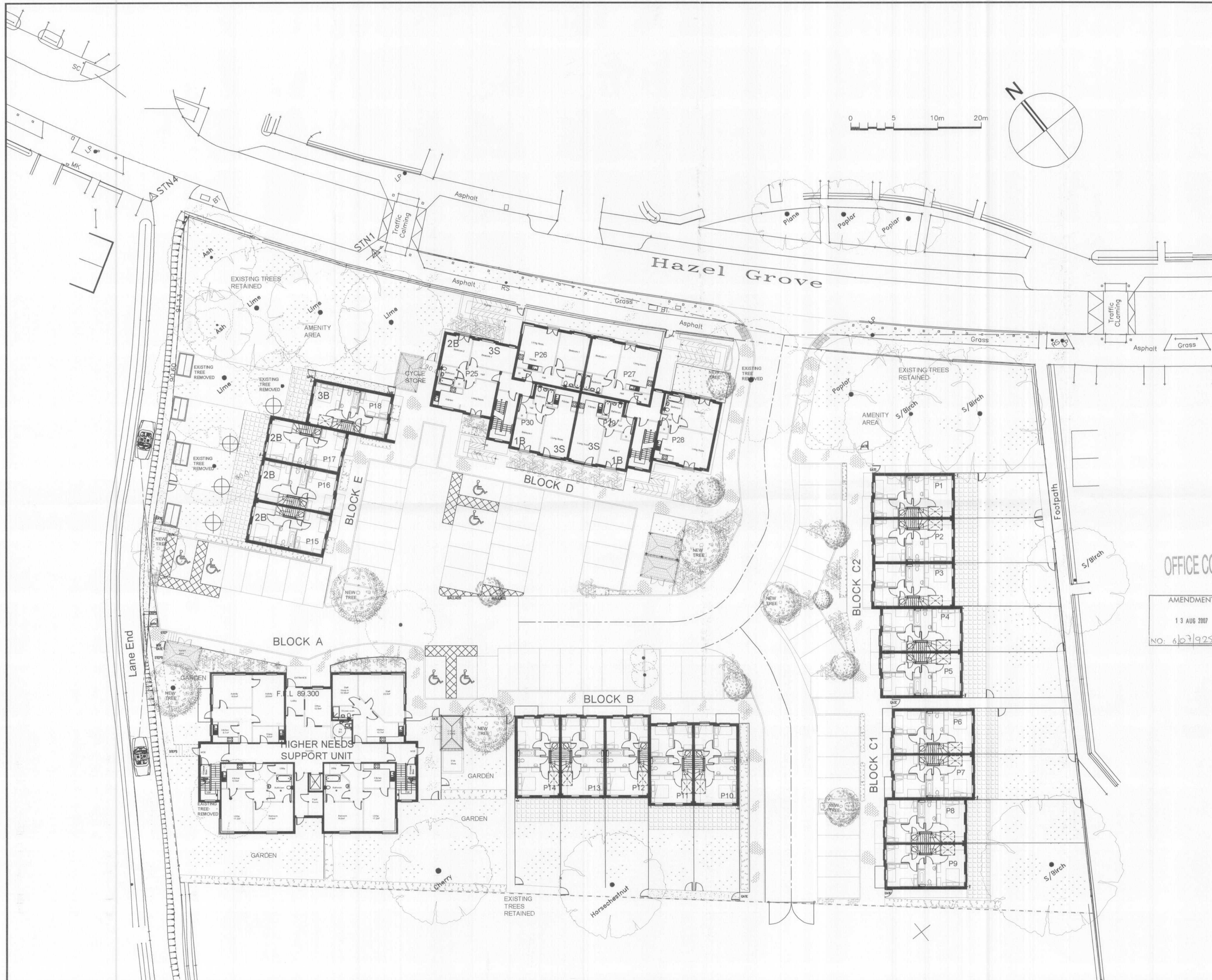


DO NOT SCALE THIS DRAWING. USE FIGURED DIMENSIONS ONLY.
CONTRACTORS ARE RESPONSIBLE FOR TAKING AND CHECKING
SITE DIMENSIONS.

DESIGN COPYRIGHT IS VESTED IN THE ARCHITECT FROM WHOM
CONSENT MUST BE OBTAINED FOR COPYING OR REPRODUCING
THIS DRAWING.

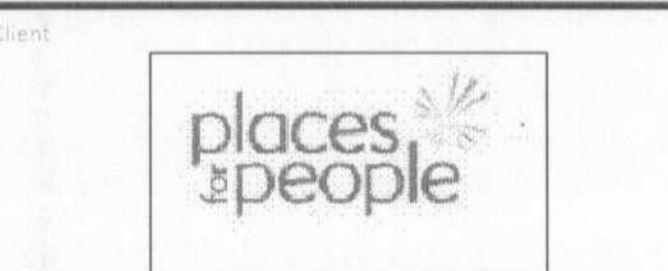
NOTE:
PLANS REPRODUCED FROM SURVEY CARRIED OUT BY
GEOFF SHARP LAND SURVEYS.
r3a Ltd ACCEPT NO RESPONSIBILITY FOR THEIR ACCURACY.



OFFICE COPY

AMENDMENT	P2	SPUR ROAD LAYOUT REVISED FOLLOWING MEETING WITH LOCAL AUTHORITY HIGHWAYS DEPT. 02.8.07	JP
	P1	PLANNING ISSUE	JP
		13 AUG 2007	
		Description	Drawn
		NO. 617925/M	

r3a architects ltd
The Old Town Hall
105 High Street
Rickmansworth
Hertfordshire WD3 1AN
T 01923 896178
F 01923 896167
info@r3architects.co.uk
www.r3architects.co.uk



Project
**HAZEL GROVE DEVELOPMENT
HATFIELD
HERTFORDSHIRE, AL10 9DX**

Title
**PROPOSED SITE PLAN
AT FIRST FLOOR LEVEL**

Scale	1:200 @ A1	Date	MAY 2007
Drawn	HV	Checked	JP

Job No.	Drawing No.	Revision
5678	PL-103	P2