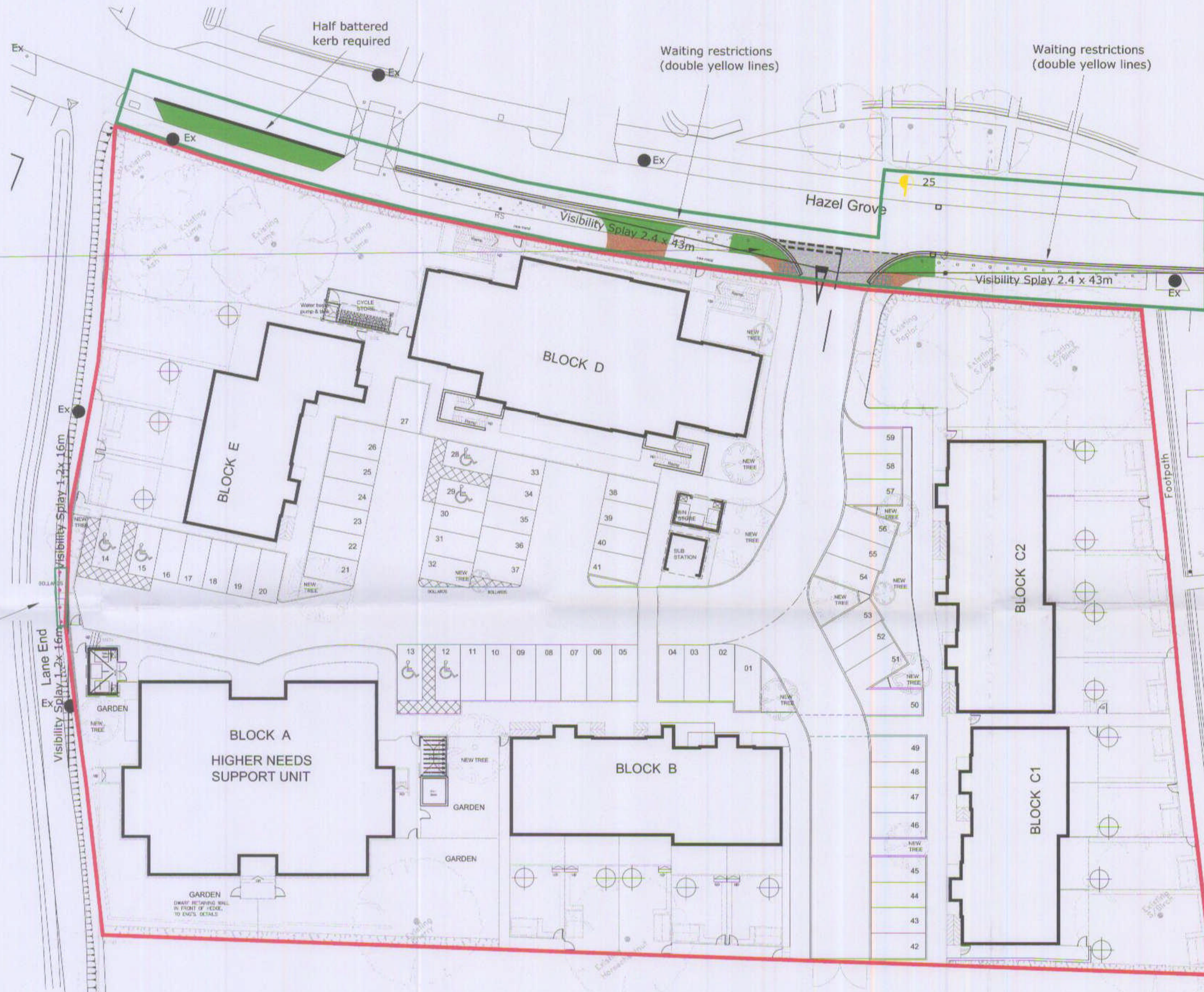
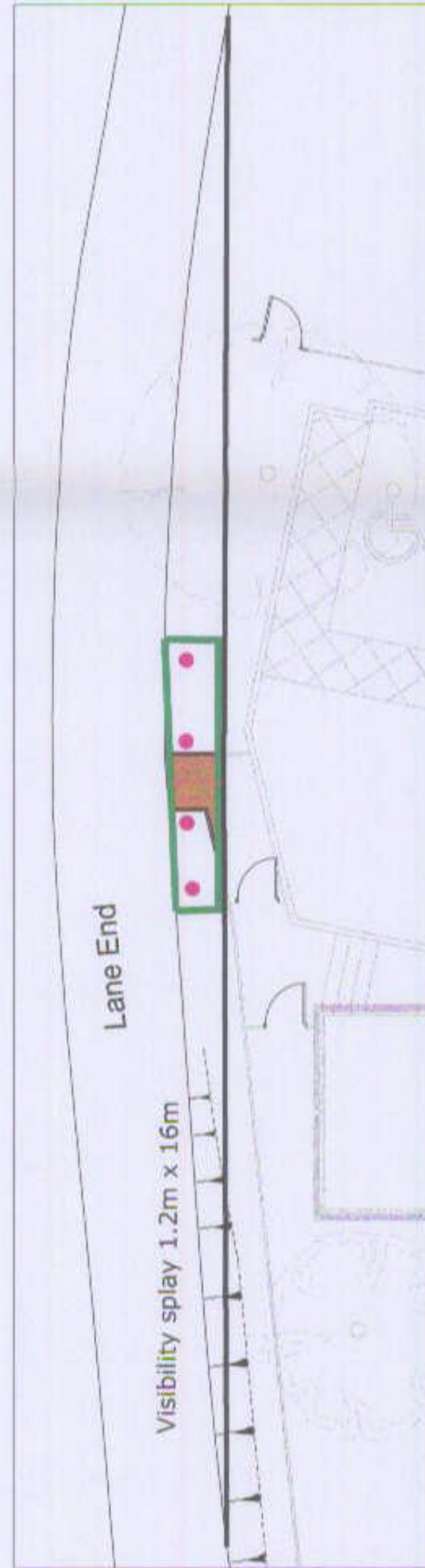
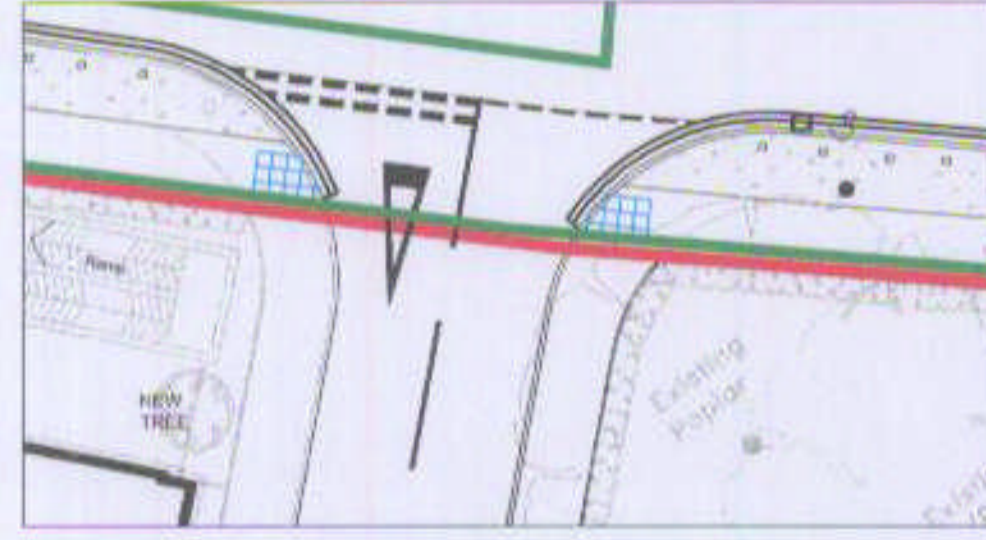


DO NOT SCALE Copyright © Rolton Group Ltd 2009
 If there should be any doubt or query regarding the interpretation of the information given on this Drawing, please enquire directly to Rolton Group Ltd before executing such part of the works.
 The contents of this drawing are strictly confidential and must not in any circumstances be copied, shown, published or otherwise disclosed to anyone, outside the Rolton Group without express consent in writing.



ROLTON GROUP
ENGINEERING THE FUTURE

Telephone +44 (0)870 726 0000
 Fax +44 (0)870 726 0222
 www.rolton.com

- THE CHARLES PARKER BUILDING
MIDLAND ROAD, HIGHAM FERRERS
NORTHANTS NN10 8DN
- NO 1 MINERVA BUSINESS PARK
LYNCH WOOD
PETERBOROUGH PE2 6FT
- NO 6 THE COURTYARD
WARWICK ROAD, SOLIHULL
WEST MIDLANDS B91 3DA
- NO 16 NAPIER COURT
BARLBOROUGH LINKS
DERBYSHIRE S43 4PZ



INSPACE PARTNERSHIPS	
REVIEWED	
PRELIMINARY	STATUS
FOR COMMENT	A
FOR CONSTRUCTION	B
SIGNED	C
DATE	



Rev.	Date	Description of Issue	Chkd
C2	11.11.09	Test within the key amended, pedestrian visibility splay removed	SP
CI	16.10.09	Construction Issue	SP
P3	26.05.09	S278 boundary revised. Yellow lining added.	SP
P2	02.03.09	Revised to suit HCC comments	SP
P1	26.01.09	Preliminary Issue	SP

Issue Purpose:
Construction
 Project:
Hazel Grove Hatfield
 Drawing Title:
Section 278 layout

Designer's Risk Assessment Reference:
XDRA001
 Specification Reference:
N/A
 Drawn By: **JM** Checked By: **SP**
 Scales: **1:200@A1** Date: **Dec 08**
1:400@A3
 Drawing No. **07-0130/INF17 C2** Rev.

- Notes**
- Drawing based on:
 Geoff Sharp land surveys drawing HAZELGRV PLAN 500
 r3a architects site layout (E) AR-102 Rev C1
 Nick Smith associates lighting drawing (ref 1457-D-01 rev A)
 - Adoptable gullies to discharge into Thames Water Sewer (subject to section 104 approval)
 - All works to be in accordance with Hertfordshire County Council's "Roads in Hertfordshire for new developments" specification
 - See drawing 07-0130/INF11 for full adoptable street lighting positions
 - See drawing 07-0130/INF13 for white lining and signage
 - See drawing 07-0130/SK04 for yellow lining

Key

	Proposed road (Tarmac)		Ownership boundary
	Proposed footpath (Tarmac)		Section 278 works
	Proposed verge (Grass)		Pedestrian crossing

- Proposed lighting columns
See Nick Smith associates lighting drawing (ref 1457-D-01 rev A) for details
- Existing lighting columns
- Bollards to be type RS002\WSDC\RS\VAR\RI+Band by Marshalls and in accordance with HCC specifications