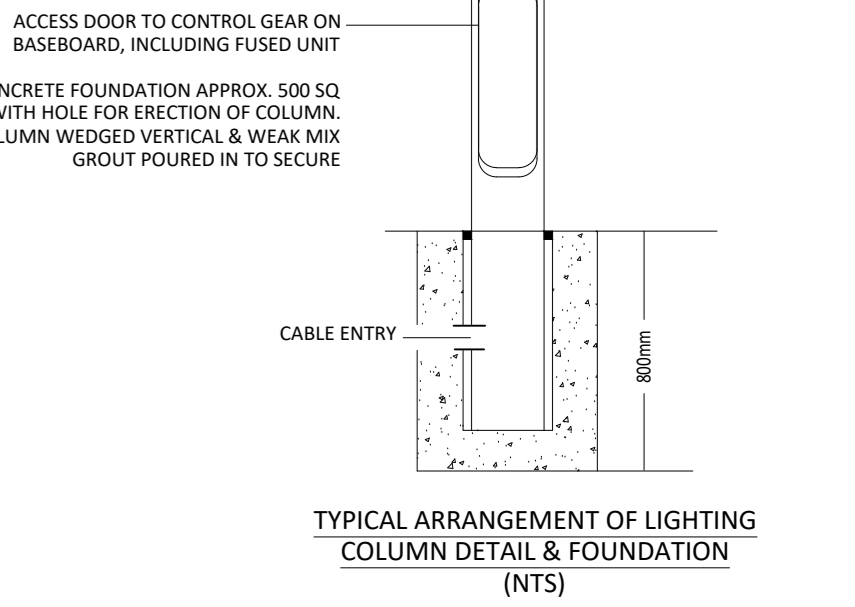


THIS DRAWING IS CONFIDENTIAL AND MAY NOT BE USED, COPIED OR DISCLOSED TO ANYONE WITHOUT PERMISSION.
DO NOT SCALE OFF THIS DRAWING

Rev	Date	Amendments	By	Check
P1	01/12/2022	FIRST ISSUE	NC	TH
P2	16/12/2022	LIGHTING UPDATED FOLLOWING COMMENTS	NC	TH
P3	02/02/2024	LIGHTING UPDATED TO SUIT NEW SITE PLAN	NC	TH
P4	16/02/2024	CCTV CAMERAS ADDED TO DRAWING	NC	TH
C01	01/06/2024	CONSTRUCTION ISSUE	NC	TH

NOTES

- THIS DRAWING SHALL BE READ IN CONJUNCTION WITH THE PROJECT SPECIFICATION AND ALL OTHER CONTRACT DOCUMENTATION.
- ALL DIMENSIONS IN MILLIMETERS UNLESS STATED OTHERWISE.
- THE LIGHTING SCHEME DETAILED ON THIS PLAN HAS BEEN PRODUCED IN ACCORDANCE WITH AN EXTERNAL LIGHTING DESIGN UNDERTAKEN USING RELUX SOFTWARE. THE SCHEME DESIGN PLOTS HAVE BEEN PROVIDED TO THE MAIN CONTRACTOR AND APPROVED FOR CONSTRUCTION.
- EXTERNAL LIGHTING CIRCUITS WILL BE CONTROLLED VIA AN EXTERNAL PHOTOCELL AND TIME CLOCK ARRANGEMENT. THE CLIENT WILL BE ABLE TO TURN OFF THE LIGHTING AT A PRE-DETERMINED TIME VIA THE TIME CLOCK. A DEDICATED COVER RIDE SWITCH TO TURN ON ALL EXTERNAL LIGHTS WILL BE PROVIDED WITHIN THE PLANT ROOM ADJACENT TO THE EXTERNAL LIGHTING BOARD.
- EMERGENCY LIGHTING HAS BEEN PROVIDED ALONG THE BUILDINGS ESCAPE ROUTES BACK TO THE PROPOSED EVACUATION MUSTER POINT (CARPARK AREA).
- EMERGENCY BULKHEAD LUMINAIRES WILL BE PROVIDED TO ALL EXTERNAL FINAL EXITS DOORS. THESE WILL BE DETAILED ON THE GROUND FLOOR INTERNAL LIGHTING DRAWING.
- ACCESS CONTROL WILL BE PROVIDED TO SECURE GATES INSTALLED ACROSS AN EXTERNAL BUILDING ESCAPE ROUTE.



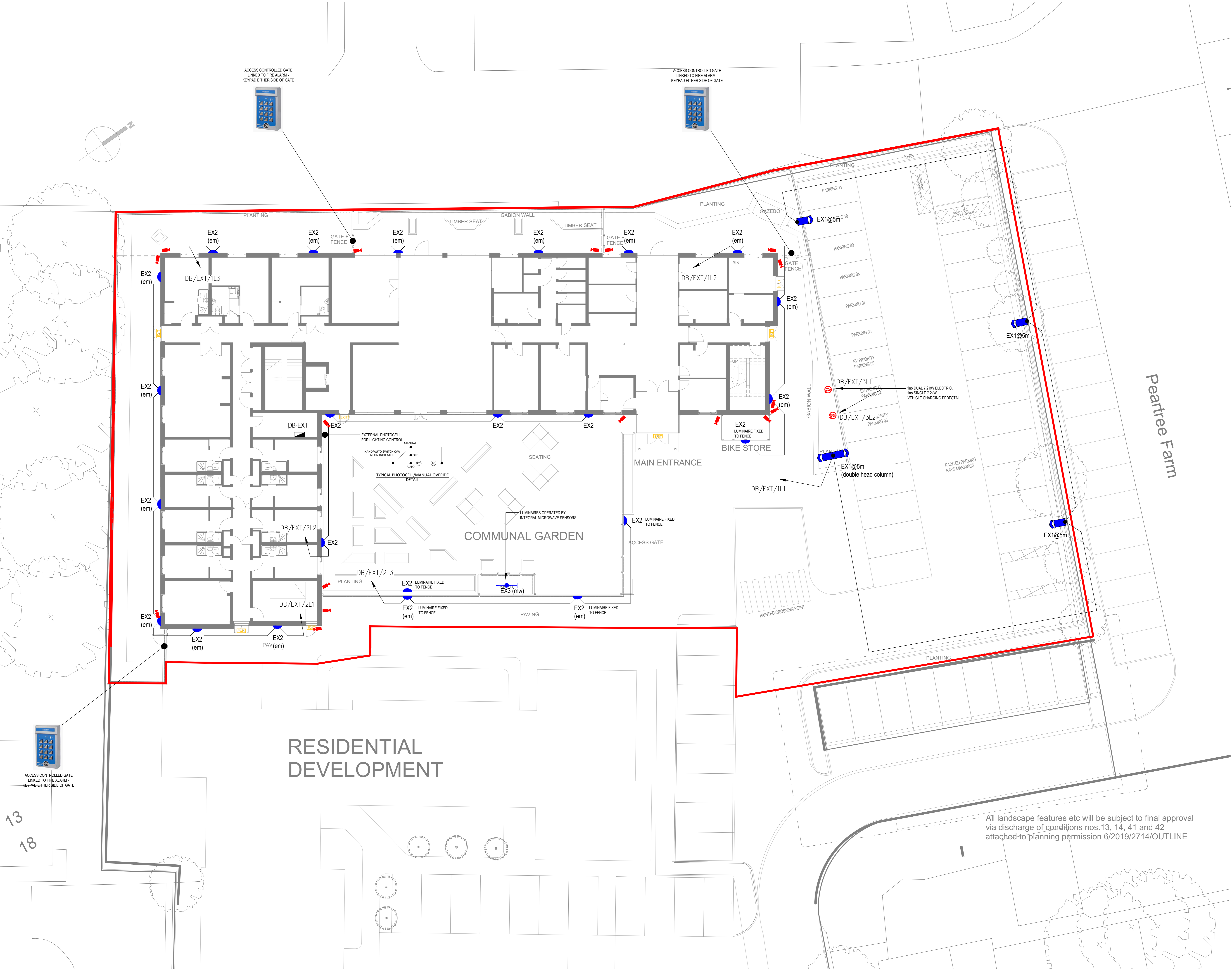
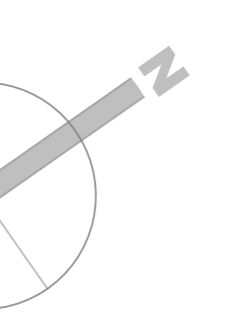
	Kingfisher Lighting - Vista - City Pro 40W Led - 5880 lumens Mounted to a 5m steel column Part no: VCYP-FW70-4-8-40DPEC
	Kingfisher Lighting - Affresco 2.0 21W Led - 1050 lumens Bulkhead Luminaire with Eyelid mounted @ 2m Em - denotes emergency option Part no: ALFH2F
	JCC Lighting - ToughLED 52 20W micro-wave sensor linear luminaire - 4200 lumens Part no: JCLB0035
	Channel - Meteor 3W Led - 52 lumens Emergency bulkhead wall light Part no: EMEM3LEDIPES

- ELECTRIC CAR CHARGING PEDESTAL
- EXTERNAL CCTV CAMERA (WIRING ONLY, CAMERAS BY OTHERS)

Client	KORI		
Project	YMCA PEARTREE LANE WELWYN GARDEN CITY		
Title	EXTERNAL LIGHTING LAYOUT		
Drawing Type	CONSTRUCTION		
Drawing No.	11600-E-600	Revision	C01
Scale	1:100	Original Size	A0
Date	01.12.22		
Drawn	NC	Engineer	NC
Checked	TH		

ALPHA ELECTRICAL
MIDLANDS LIMITED

Hawthorne House,
Portland Mews,
Leamington Spa,
CV32 3HD
01926 422366
info@alphaelectric.co.uk



All landscape features etc will be subject to final approval via discharge of conditions nos.13, 14, 41 and 42 attached to planning permission 6/2019/2714/OUTLINE



13
18