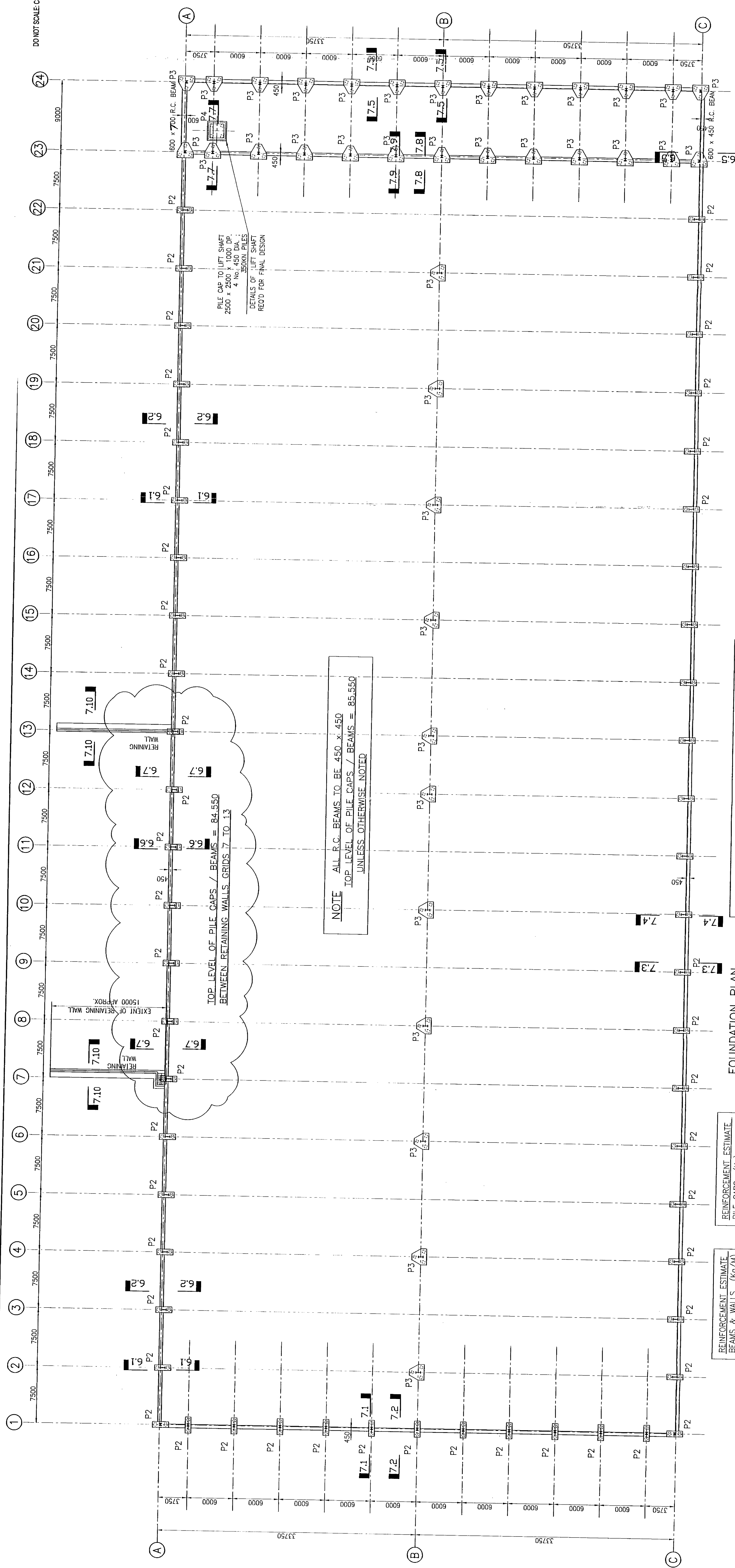


DO NOT SCALE. Contractor to check all dimensions and report any omissions or errors



NOTE ALL R.C. BEAMS TO BE 450 x 450
TOP LEVEL OF PILE CAPS / BEAMS = 84.550
UNLESS OTHERWISE NOTED

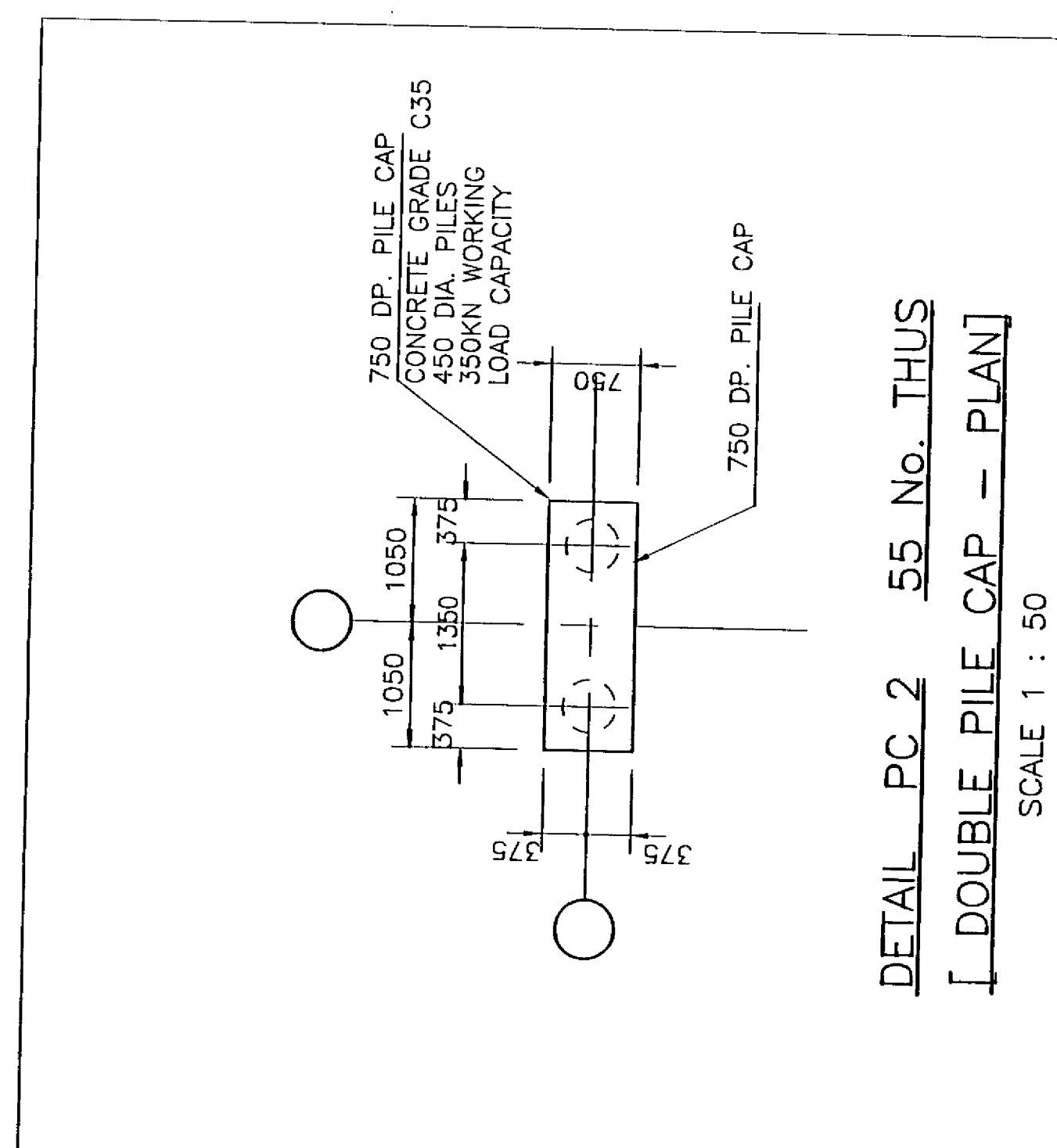
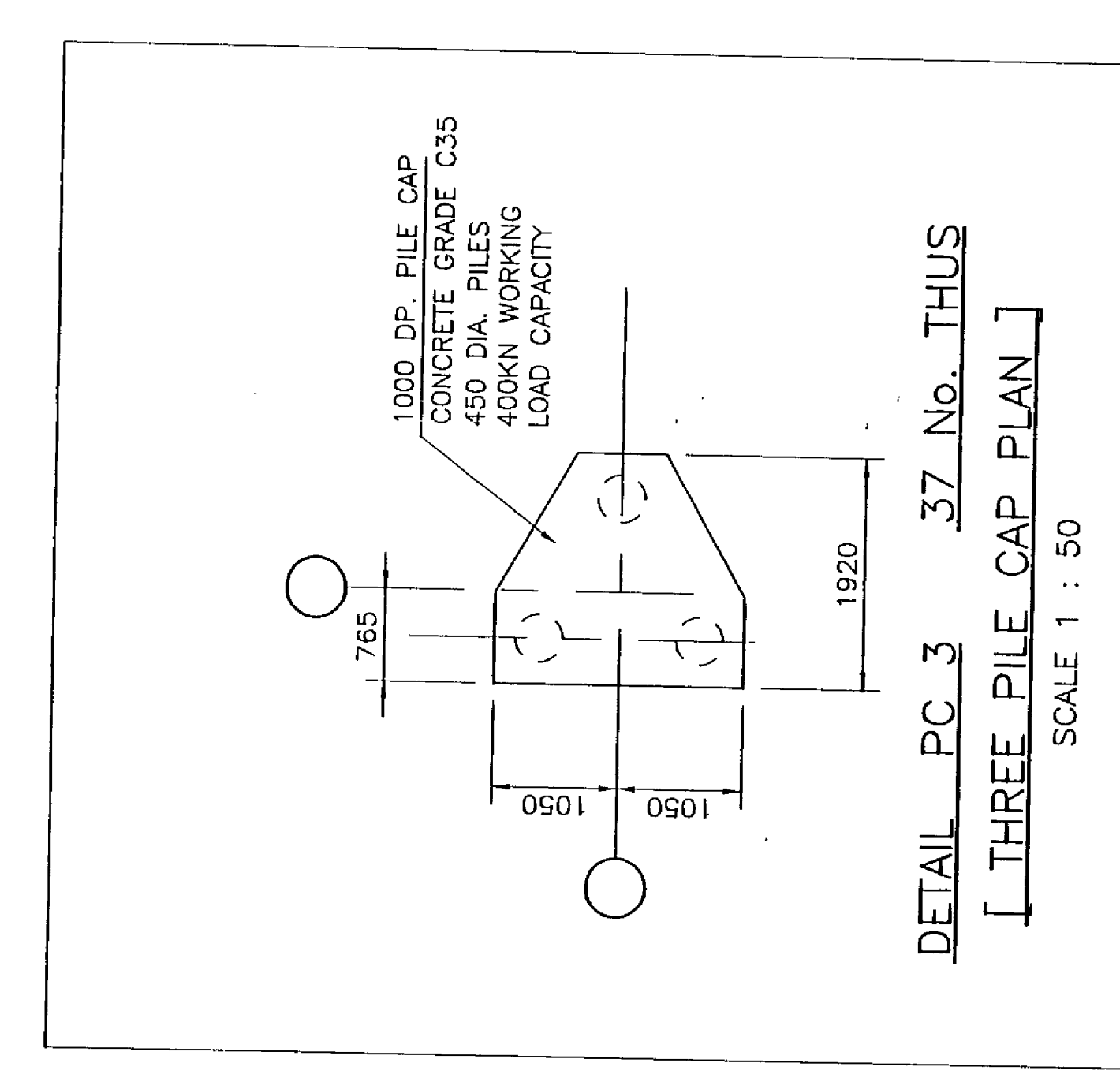
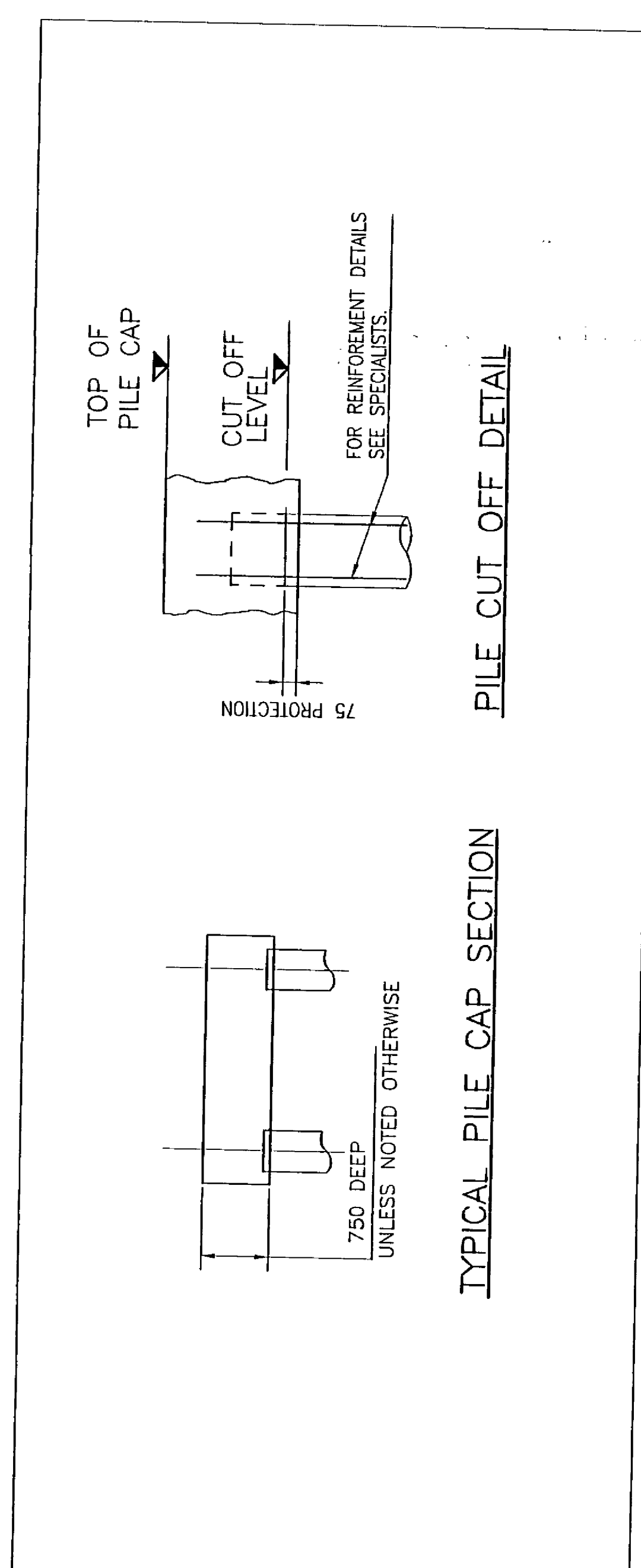
FOUNDATION PLAN

REINFORCEMENT ESTIMATE BEAMS & WALLS (KG/M)	
ELEMENT	WEIGHT
450x450 BEAM	30 KG/M
600x450 BEAM	50 KG/M
600x600 BEAM	60 KG/M
DOCK BAYLER BEAM / WALL 1800x300	130 KG/M
EXTERNAL RETAINING WALL (200 WALL & 200 BASE)	75 KG/M

REINFORCEMENT ESTIMATE PILE CAPS (KG)	
ELEMENT	WEIGHT
DOUBLE PILE CAP	144 KG
TOTAL = 55 x 144	= 7,920 KG
SING. PILE CAP	450 KG
TOTAL = 37 x 450	= 16,650 KG
4 No. PILE CAP & LIFT SHIRT	2,000 KG
500mm DIA. PILE SUB COLUMNS	75 KG
TOTAL = 7 x 75	= 525 KG

NOTE DIMENSION TO BE CONFIRMED BY ARCHITECT

- NOTES**
- THIS DRAWING IS TO BE READ IN CONJUNCTION WITH ALL SPECIFICATIONS, CONTRACT DOCUMENTS, ENGINEERS AND SPECIALISTS DRAWINGS, TOGETHER WITH THEIR LATEST REVISIONS. ANY DISCREPANCIES ARE TO BE REPORTED TO THE ARCHITECT IMMEDIATELY.
 - ALL SETTING OUT DIMENSIONS AND LEVELS ARE TO BE CHECKED AGAINST THE SPECIFICATION. ANY DISCREPANCIES ARE TO BE REPORTED IMMEDIATELY TO THE ARCHITECT FOR INFORMATION.
 - FOR CONCRETE STRENGTHS REFER TO THE SPECIFICATION.
 - SECTION REFERENCE EXAMPLE: THIS REFERS TO THE DRAWING NUMBER. THIS REFERS TO THE SECTION NUMBER.
 - THIS DRAWING IS TO BE READ IN CONJUNCTION WITH THE HEALTH & SAFETY PLAN.



Revised: By: CJK / APJ Date: _____

FOR TENDER

GEOFFREY REID ASSOCIATES
42, PORTLAND PLACE
LONDON W1N 3DG

Consulting Engineers
Civil Structural Mechanical Electrical Process Fall Traffic Environmental Project Management

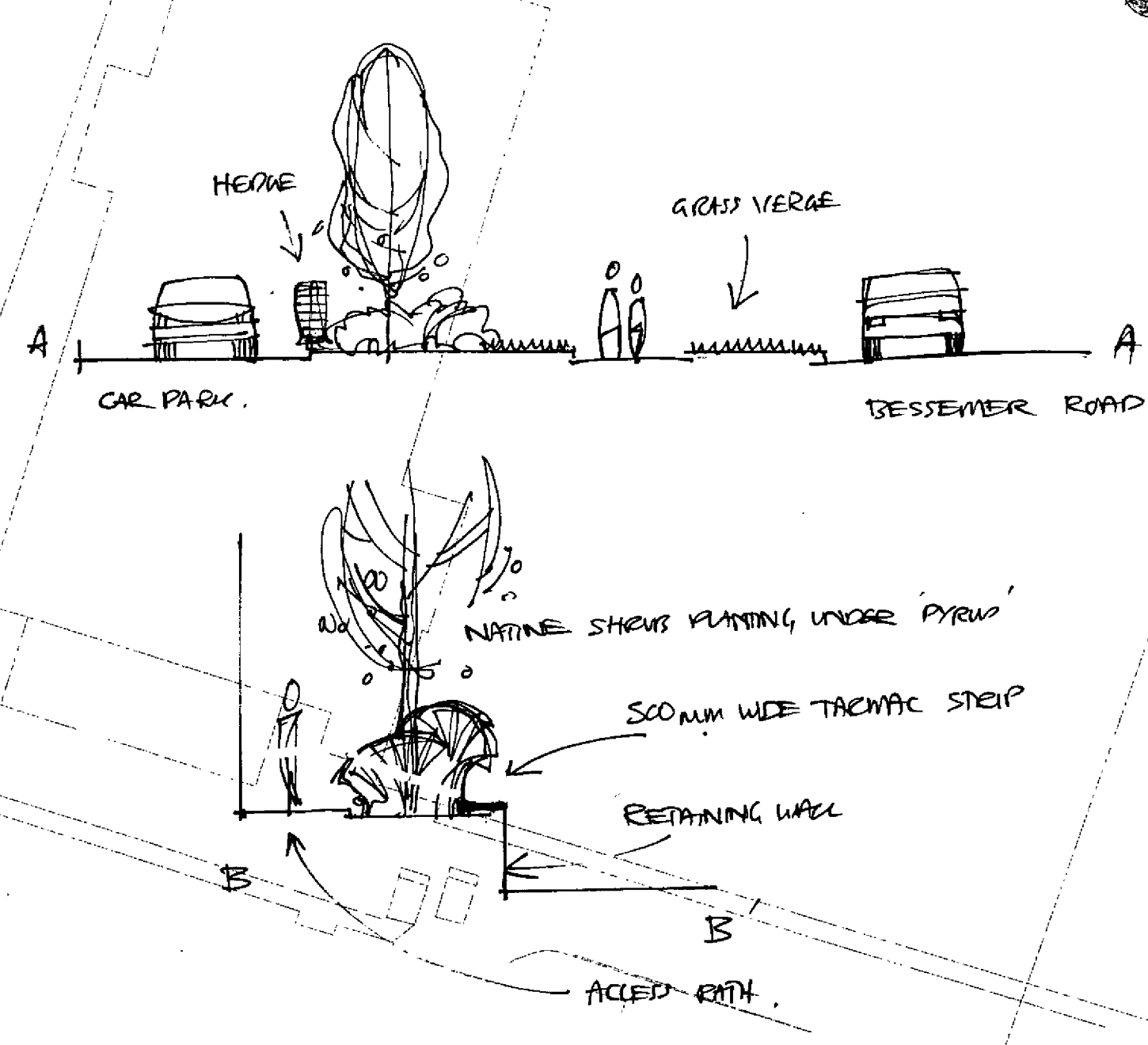
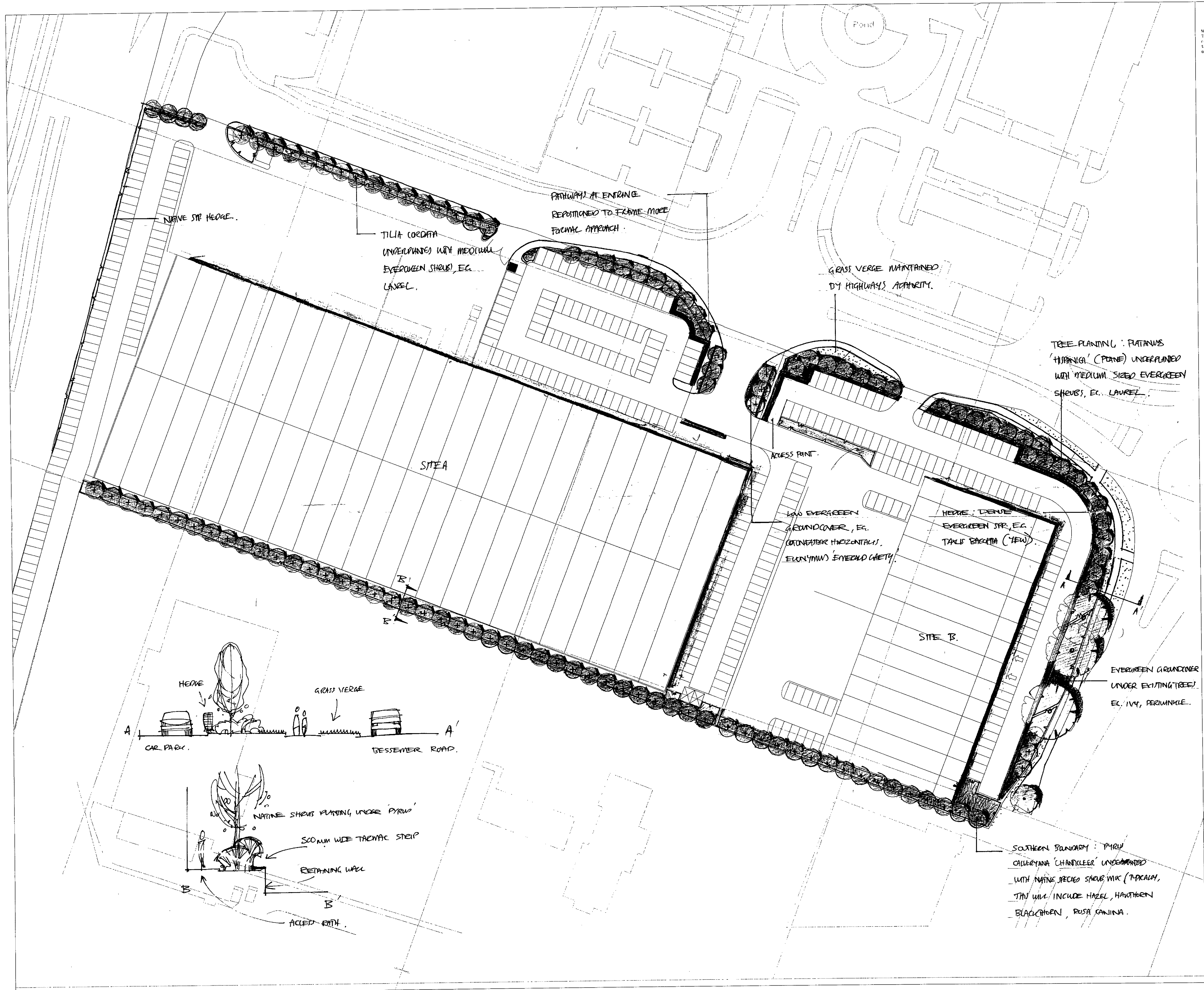
CENTRAPARKS
BESSEMER ROAD
WELWYN GARDEN CITY

FOUNDATION PLAN
PILE CAPS & GROUND BEAMS

Scale: 1:200
Drawn By: _____ Date: 27/07/08
Checked By: _____ Date: 11/08/08
Project No: A004813
Drawing No: 30
Revision: 002

APPROVAL: _____ INFORMATION: _____ TENDER: _____ CONTRACT: _____ CONSTRUCTION: _____

NOTES
 This drawing is the copyright of Hyland Edger Driver. It must not be copied or reproduced without written consent. Only figured dimensions are to be taken from this drawing. All contractors must visit the site and be responsible for taking and checking all dimensions related to the works shown on this drawing.



TREE PLANTING: PLATANUS HISPANICA (POME) UNDERPLANTED WITH MEDIUM SIZED EVERGREEN SHRUBS, EC. LAUREL

GRASS VERGE MAINTAINED BY HIGHWAYS AUTHORITY.

PATHWAYS AT ENTRANCE REPOSITIONED TO FRAME MORE FORMAL APPROACH.

TILIA CORDATA UNDERPLANTED WITH MEDIUM EVERGREEN SHRUBS, EC. LAUREL.

LOW EVERGREEN GROUNDCOVER, EC. COTONEASTER HORIZONTALIS, ELONSYMUS EMERALD GAIETY.

HEGGE: DENVE EVERGREEN STR, EC. TAKU BAKETHA (YEW)

EVERGREEN GROUNDCOVER UNDER EXISTING TREES! EC. IVY, PERIWINKLE.

SOUTHERN BOUNDARY: 'PIROU' CALLEOTANA 'CHANDLER' UNDEVELOPED WITH NATIVE SPECIES SHRUB MIX (TACALIA, BLACKBERRY, ROSA CANINA).

REVISION NUMBER
REVISIONS

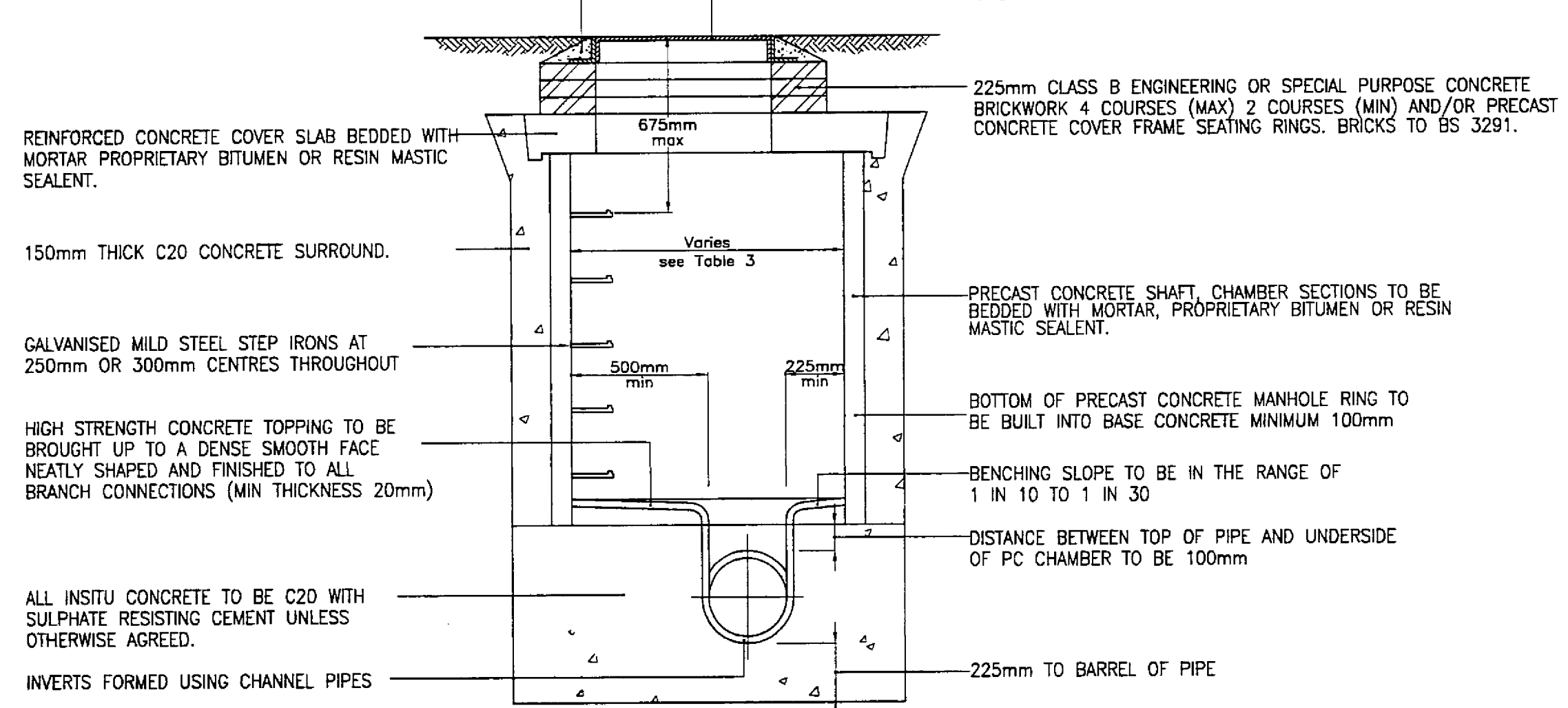
H | E | D
 Hyland Edger Driver
 Landscape Architecture Environmental Consultancy
 Furzehill Farm Wickham Road Fareham Hampshire PO16 7JH
 Telephone 01329 826616 Facsimile 01329 826138

PROJECT
**CENTRAPARK
 BESSEMER ROAD
 WELWYN GARDEN CITY**
 SUBJECT
PLANTING MASTERPLAN

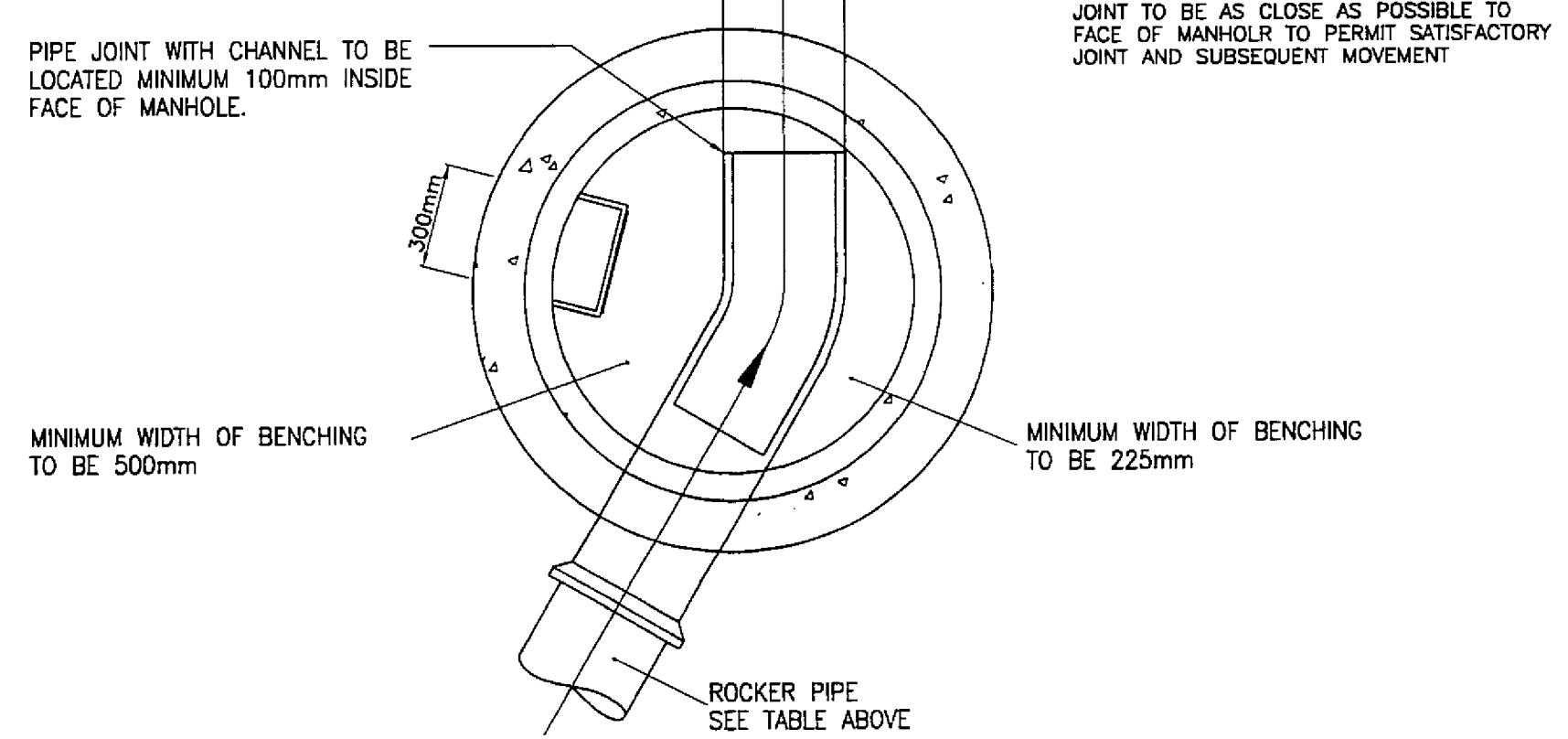
DATE 29.03.00	DRAWN BY MT		
SCALE 1/500	CHECKED BY SA		
DRAWING NUMBER 352.001	REVISION		
DRAWING STATUS A			
A - PRELIMINARY	B - ISSUED FOR PLANNING	C - ISSUED FOR DESIGN	D - ISSUED FOR TENDER
E - SCALE FOR APPROVAL	F - ISSUED FOR CONSTRUCTION	G - AS BUILT	

MORTAR HAUNCHING TO M.H. COVER AND FRAME. ALL IRON WORK TO BE KITE MARKED.

MANHOLE COVER AND FRAME TO BS EN 124 AS DETAILED ON THE MANHOLE SCHEDULE HAVING A MINIMUM 675mm SQUARE CLEAR OPENING. COVER FRAME TO BE BEDDED ON CLASS 1 MORTAR.



Nominal Diameter (mm)	Effective Length (m)
150 to 600	0.6



MANHOLE TYPE B
Max. depth to soffit 3.0m
Scale 1:20

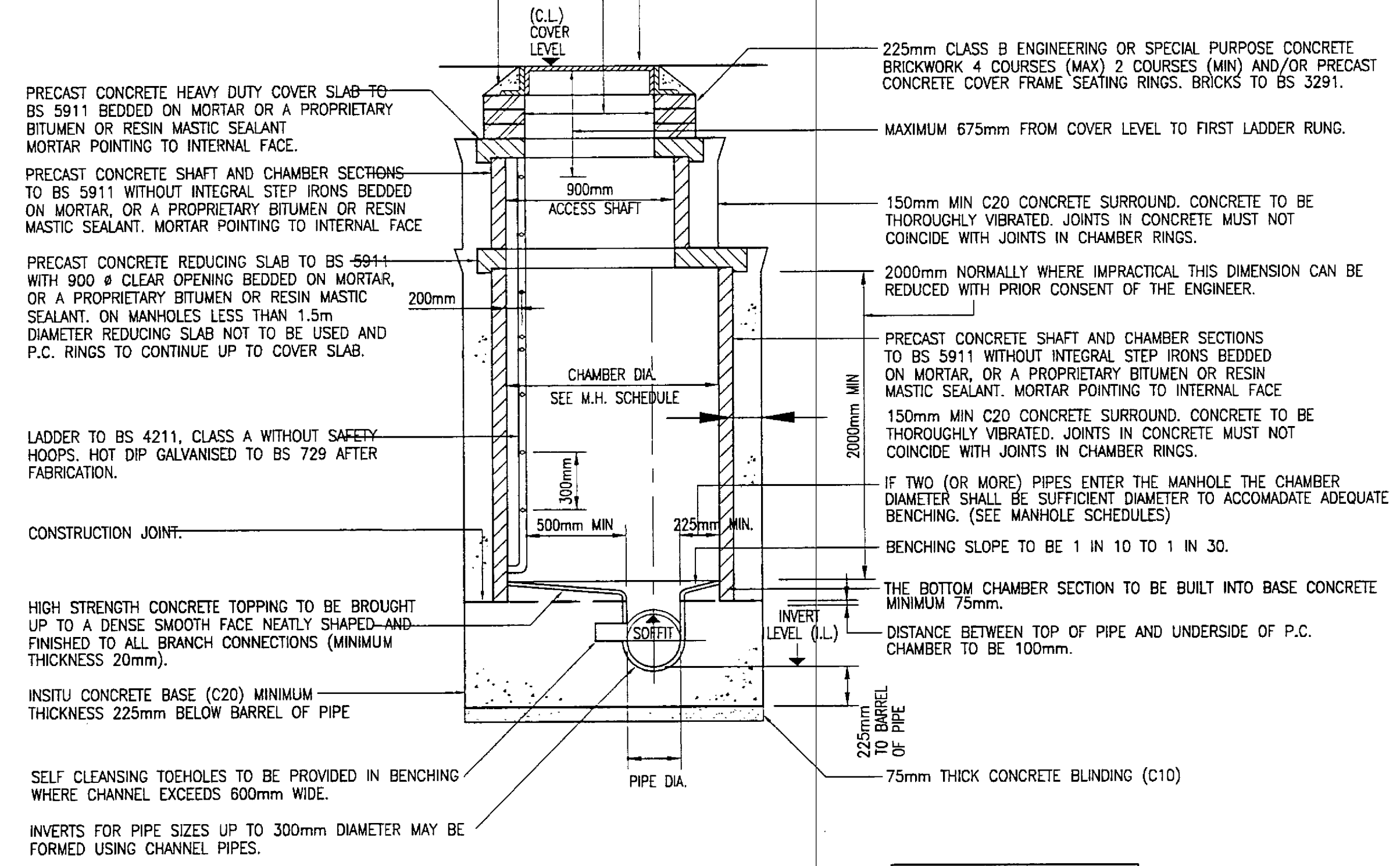
TABLE 3 - Manhole diameters should be in accordance with table below:

Diameter of largest pipe in manhole (mm)	Internal diameter of manhole (mm)
Less than 375	1200 (1050 where depth to soffit is 1.35m - 1.5m)

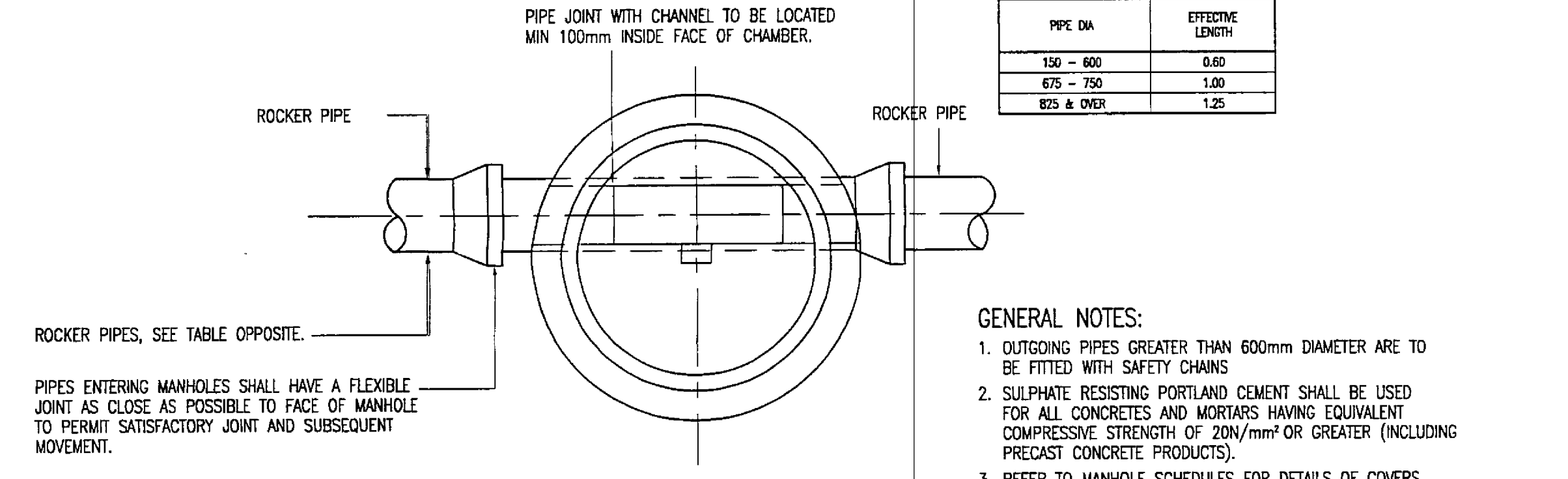
CLEAR OPENINGS TO BE AS COVER AND FRAME.

CLASS 1 MORTAR HAUNCHING TO MH COVER AND FRAME.

MANHOLE COVER AND FRAME TO BS EN 124 AS DETAILED ON THE MANHOLE SCHEDULE HAVING A MINIMUM 675mm SQUARE CLEAR OPENING. COVER FRAME TO BE BEDDED ON CLASS 1 MORTAR.



PIPE DIA.	EFFECTIVE LENGTH
150 - 600	0.60
675 - 750	1.00
875 & OVER	1.25

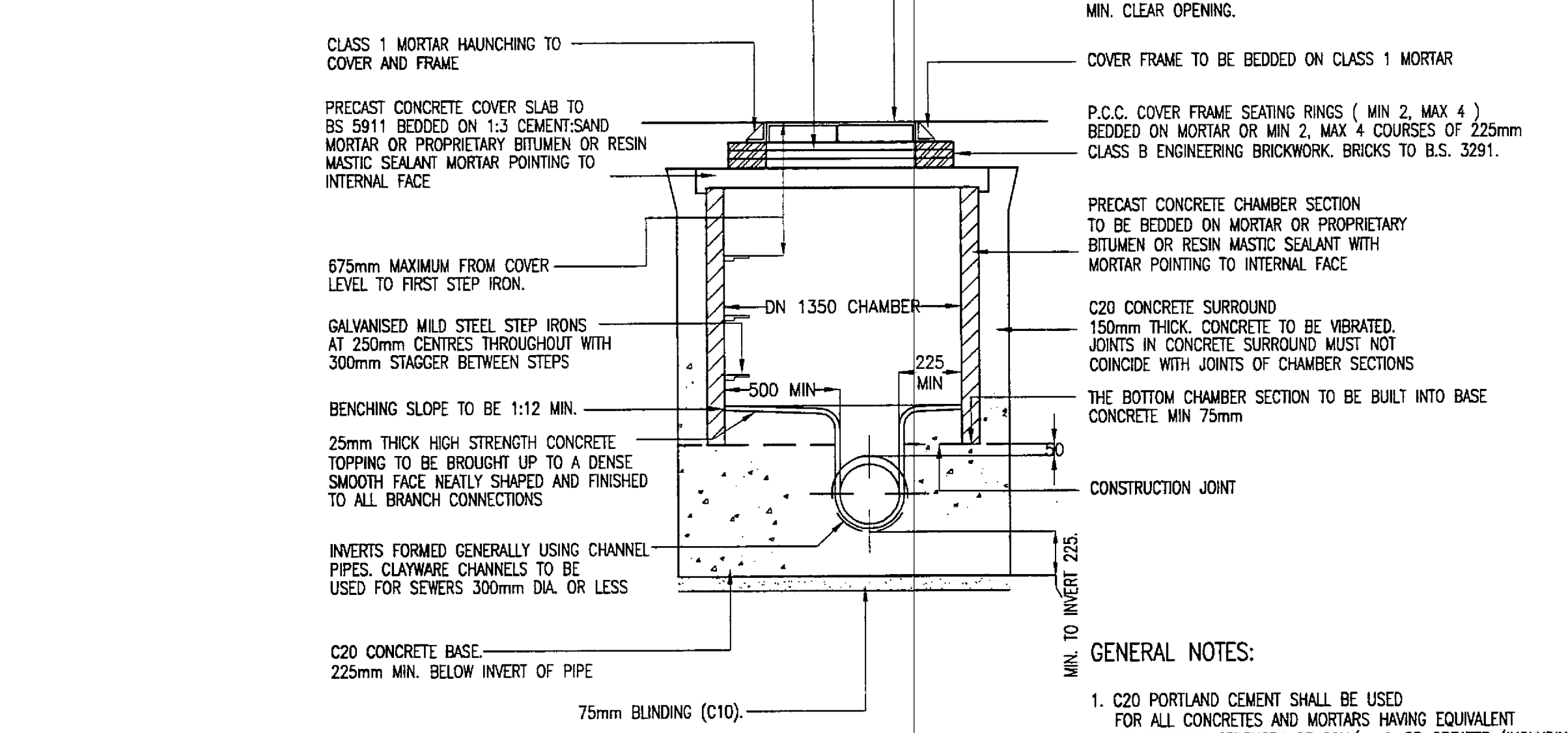


MANHOLE - TYPE A NOT TO SCALE
DEPTH TO SOFFIT = 3.00m - 6.00m

CLEAR OPENINGS TO BE AS COVER AND FRAME.

CLASS 1 MORTAR HAUNCHING TO COVER AND FRAME.

COVER AND FRAME TO BS EN 124:1994 AS DETAILED ON MANHOLE SCHEDULES HAVING 1220mm x 675mm MIN. CLEAR OPENING.

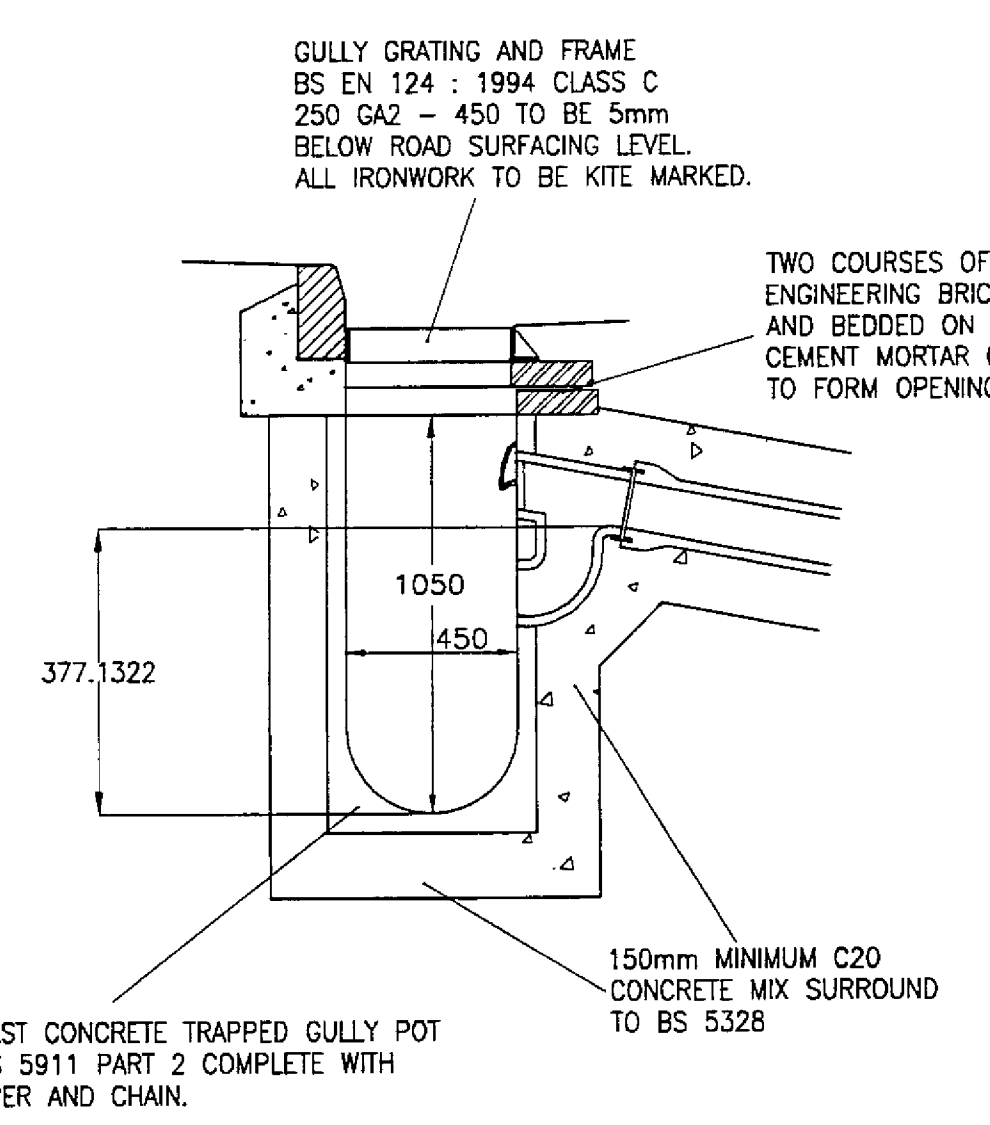


GENERAL NOTES:

- C20 PORTLAND CEMENT SHALL BE USED FOR ALL CONCRETES AND MORTARS HAVING EQUIVALENT COMPRESSIVE STRENGTH OF 20N/mm² OR GREATER (INCLUDING PRECAST CONCRETE PRODUCTS).
- REFER TO MANHOLE SCHEDULES FOR DETAILS OF COVERS, PIPE SIZES, INVERT LEVELS, DIAMETER ETC.

MANHOLE - TYPE E
DEPTH TO SOFFIT = 1.0 TO 1.45m

DO NOT SCALE: Contractor to check all dimensions and report any omissions or errors



GULLY
Scale 1:20

FOR TENDER

Rev Description By Chk App Date

Architect
GEOFFREY REID ASSOCIATES
42 PORTLAND PLACE
LONDON W1N 3DG

Yeoman House
63 Croydon Road
London
SE20 7TS

Tel: 020 8 659 9555
Fax: 020 8 676 9515
e-mail: 101470.3330@compuserve.com

White Young Green

Consulting Engineers
Civil Structural Mechanical Electrical Process Rail Traffic Environmental Project Management

Project:
W.T. FOODS CENTRAPARKS
BESSEMER ROAD
WELWYN GARDEN CITY

Drawing Title:
DRAINAGE STANDARD DETAILS
(SHEET 3 OF 3)

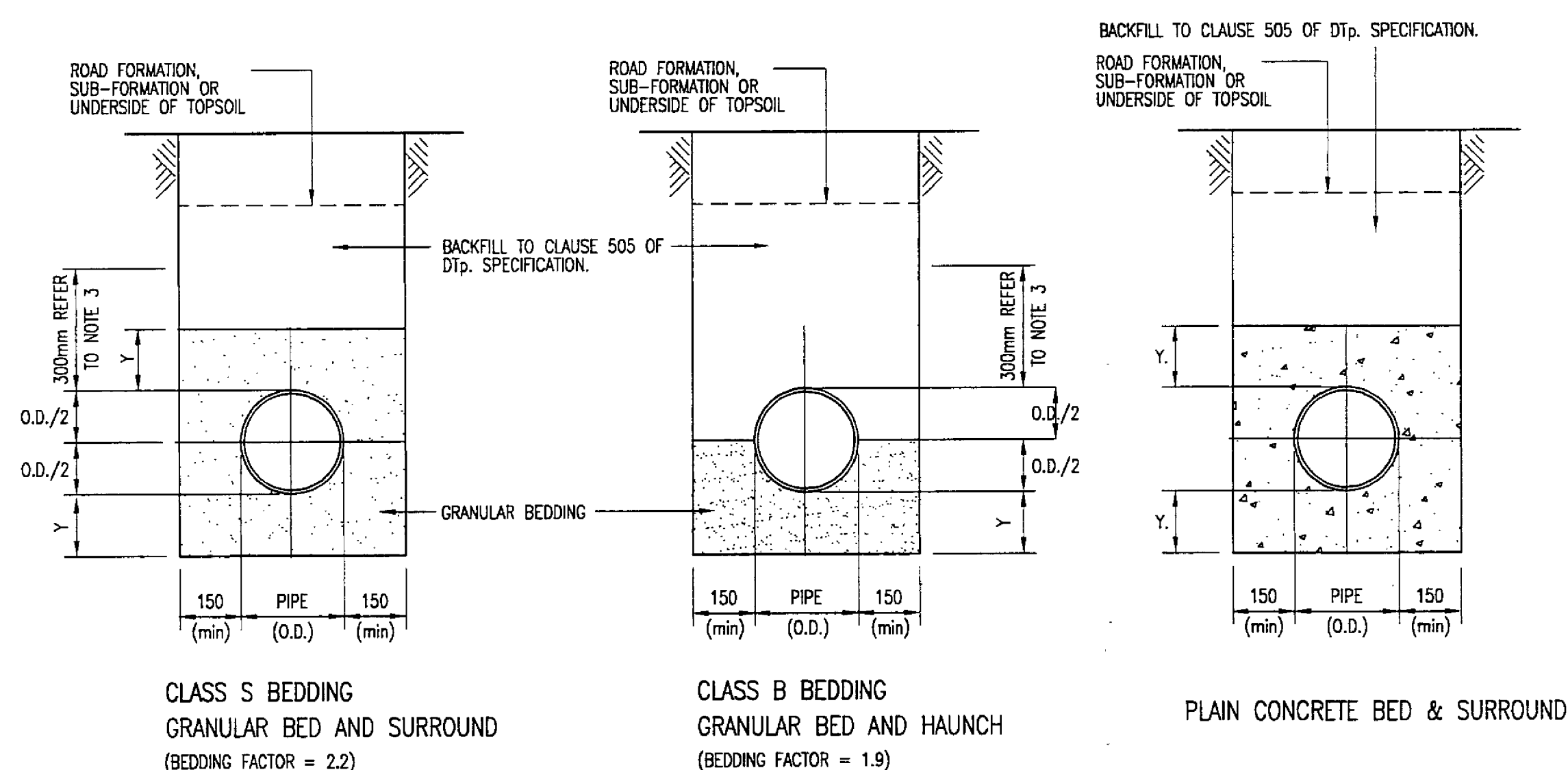
Scale at A1	Drawn By	Date	Checked By	Date	Approved By	Date
N.T.S.	J.A.	28/02/00	J.A.	19/3/00	J.A.	19/07/00
Project No.	Office	Type	Drawing No.	Revision		
A004813	30	D	110			

APPROVAL INFORMATION TENDER CONTRACT CONSTRUCTION

PIPE DIAMETER	Y minimum		MAXIMUM TRENCH WIDTH	L
	Y1 min.	Y2 min.		
100	100	200	700	18
150	100	200	750	18
200	100	200	800	18
225	100	200	825	18
250	100	200	850	18
300	100	200	925	18
350	100	200	1000	18
375	100	200	1090	18
400	150	200	1025	18
450	150	200	1175	36

- NOTES:
- ALL DIMENSIONS ARE IN MILLIMETRES.
 - DIMENSION Y1 SHALL BE USED UNLESS Y2 IS SPECIFIED OR IS DIRECTED BY THE ENGINEER.
 - DIMENSION Y2 SHALL BE USED IN PLACE OF Y1 WHERE THE EXCAVATION IS IN ROCK OR IN MIXED SOILS CONTAINING ROCK BEDS, BOULDERS, LARGE FLINTS OR OTHER IRREGULAR HARD SPOTS.
 - DIMENSION Y2 SHALL BE INCREASED BY 40mm FOR EACH ADDITIONAL 1.0m OF COVER IN EXCESS OF 5.0m.
 - DIMENSION L IS THE WIDTH OF COMPRESSIBLE FILLER REQUIRED AT JOINTS IN CONCRETE PROTECTION TO PIPES.

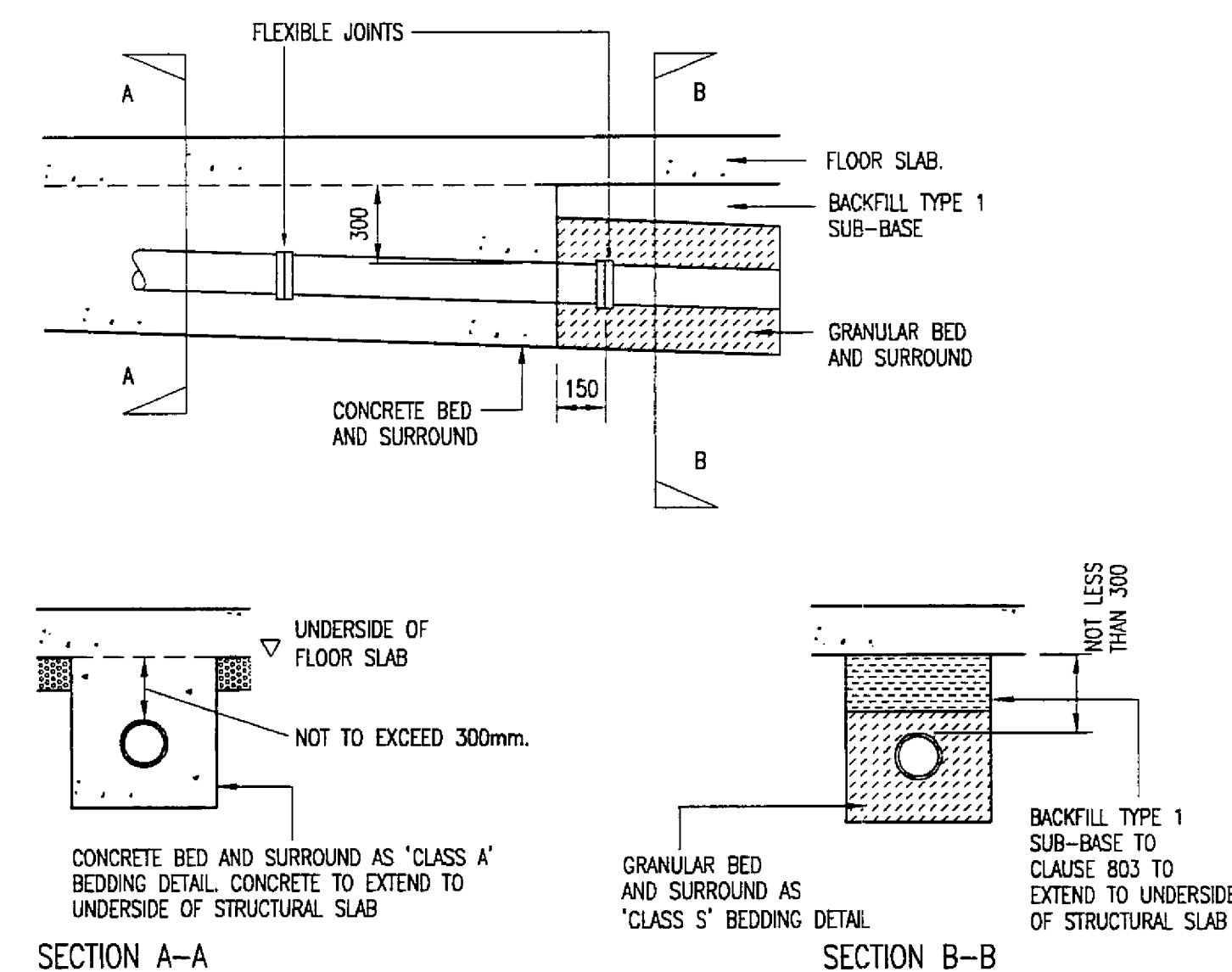
DIMENSIONS FOR PIPE BEDDING



NOTES:

- REFER TO TABLES FOR DIMENSIONS AND BEDDING DETAILS
- BEDDING BENEATH AND AT THE SIDES OF THE PIPE TO BE WELL COMPACTED
- THE FIRST 300mm OF FILL ABOVE THE CROWN OF THE PIPE IS TO BE LIGHTLY TAMPED BY HAND. MECHANICAL COMPACTION MAY BE USED ONLY ABOVE THIS LEVEL.
- GEOTEXTILES MAY BE USED WHERE DIRECTED OR APPROVED BY THE ENGINEER TO CONTAIN BEDDING MATERIAL IN CERTAIN SOILS E.G. RUNNING SAND
- IN VERY WET CONDITIONS, WHERE DIRECTED OR APPROVED BY THE ENGINEER A TEMPORARY LAND DRAIN MAY BE LAID WITHIN THE GRANULAR BED.
- WHERE PIPES WITH FLEXIBLE JOINTS ARE USED, THE CONCRETE PROTECTION IS TO BE INTERRUPTED OVER ITS FULL CROSS-SECTION AT INTERVALS NOT EXCEEDING 5 METRES (OR AS DIRECTED BY THE ENGINEER) BY A SHAPED FORMER OF BITUMEN IMPREGNATED COMPRESSIBLE FILLER. THESE INTERRUPTIONS SHALL COINCIDE WITH PIPE JOINTS. SEE DIMENSIONS ON PIPE BEDDING TABLE FOR THICKNESS OF COMPRESSIBLE FILLER.
- CONCRETE TO BE CLASS 2; SULPHATE RESISTING C20 CONCRETE.
- WHERE FLEXIBLE PIPES ARE USED, CARE MUST BE TAKEN TO PREVENT THE PIPES FROM FLOATING.

PIPE BEDDING DETAILS N.T.S.

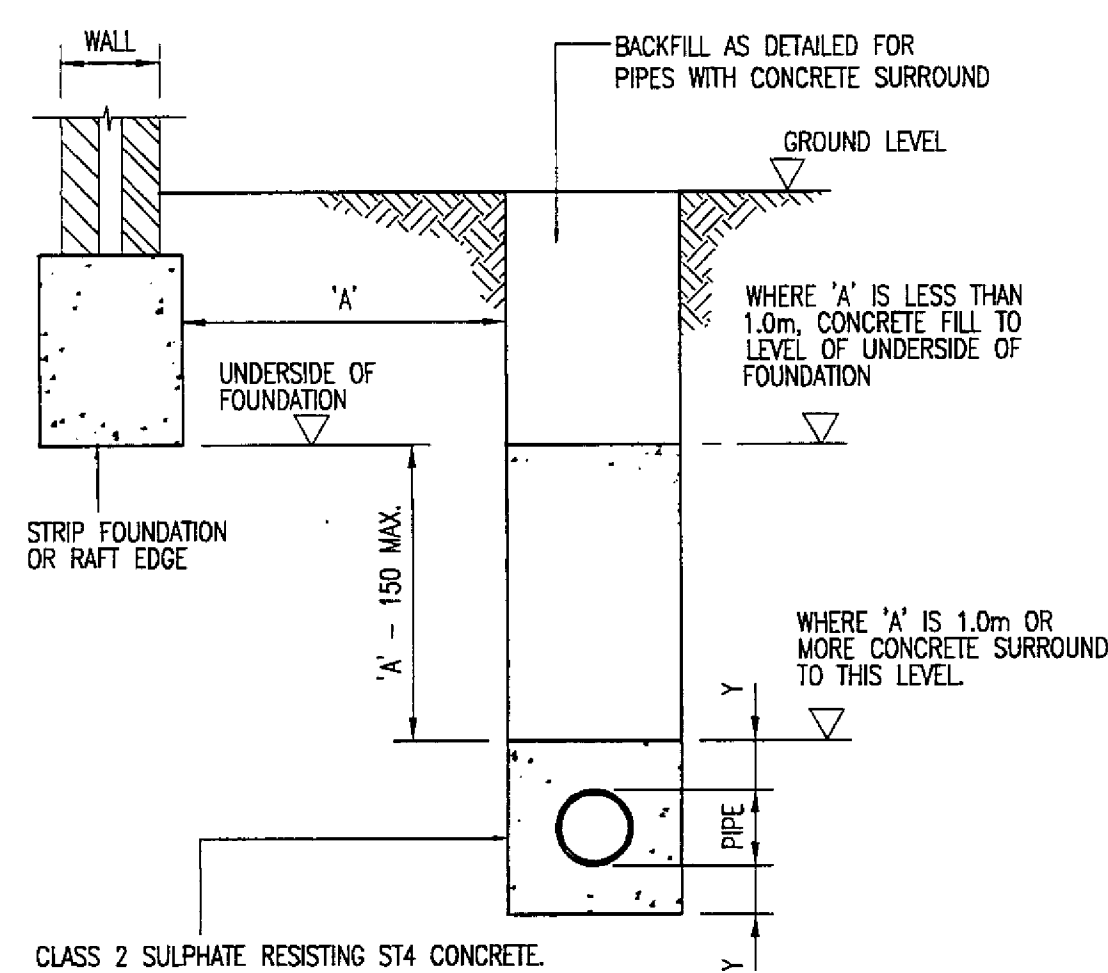


DRAINS UNDER BUILDINGS N.T.S.

PIPE DIAMETER	CLASS OF BEDDING	IMPORTED GRANULAR MATERIAL (NOTE 1)
100	S B	10mm nominal size
OVER 100 to 150	S B	10 or 14mm nom. single size or 14 to 5mm graded
OVER 150 to 500	S B	10,14,20mm nom. single size or 14 to 5mm graded or 20 to 5mm graded
OVER 500 (note 2)	S B	10,14,20mm nom. single size crushed rock or 14 to 5mm graded or 20 to 5mm graded or 40 to 5mm graded

- NOTES:
- IMPORTED GRANULAR MATERIALS TO INCLUDE AGGREGATES TO BS 882, AIR-COOLED BLAST FURNACE SLAG TO BS 1047 & SINTERED PULVERIZED FUEL ASH TO BS.3797.
 - ANGULAR MATERIALS SHOULD BE CHOSEN TO ENSURE SUFFICIENT SUPPORT IS PROVIDED TO HEAVIER PIPES.
 - CLASS S BEDDING SHALL BE USED WITH FLEXIBLE PIPES

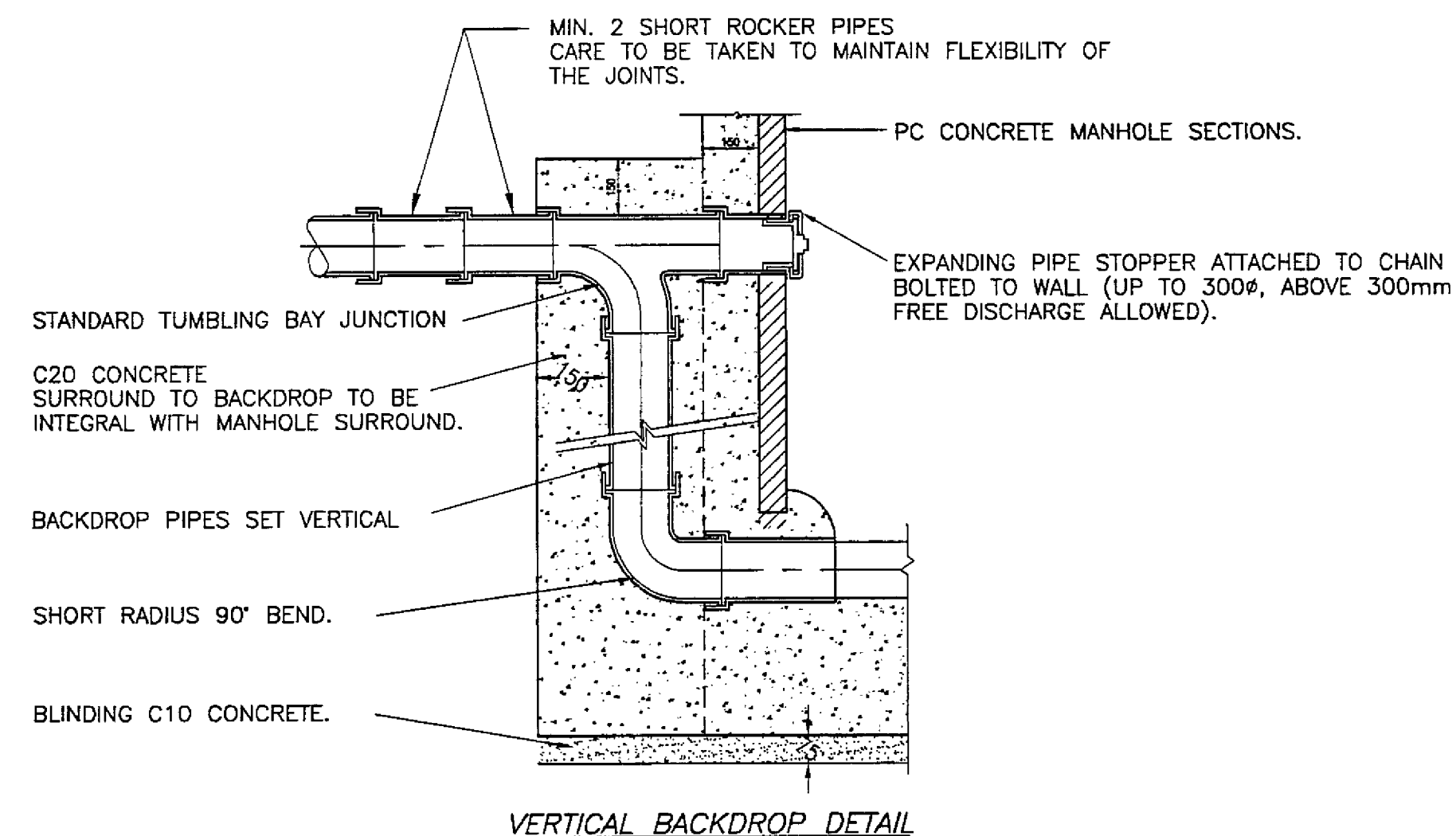
GRANULAR BEDDING & SIDEFILL MATERIALS FOR RIGID + FLEXIBLE PIPES



NOTES:

- FLEXIBLE JOINTS SHALL BE PROVIDED IN CONCRETE. BY INSERTING COMPRESSIBLE BOARD AT INTERVALS NOT EXCEEDING 5000mm. PRECUT TO DIAMETER, HEIGHT AND WIDTH EQUAL TO THE CONCRETE CROSS SECTION. REFER TO DIMENSIONS FOR PIPE BEDDING TABLES FOR THICKNESS OF FILLER.
- FOR VALUES OF Y REFER TO DIMENSIONS FOR PIPE BEDDING TABLES

PIPE RUNS NEAR BUILDINGS N.T.S.



NOTES:

- CONCRETE BED AND SURROUND SHALL BE PROVIDED AS SECTION A-A WHERE DISTANCE BETWEEN UNDERSIDE OF SLAB AND PIPE SOFFIT IS LESS THAN OR EQUAL TO 300mm.
- WHERE PIPES WITH FLEXIBLE JOINTS ARE USED THE CONCRETE PROTECTION SHALL BE INTERRUPTED OVER ITS FULL CROSS-SECTION AT EACH JOINT BY A SHAPED COMPRESSIBLE FILLER. (SEE DIMENSIONS FOR PIPE BEDDING TABLE FOR THICKNESS OF COMPRESSIBLE FILLER).
- IF PIPES ARE SURROUNDED IN CONCRETE, THE JOINTS SHALL BE PROTECTED FROM THE INGRESS OF CONCRETE BY WRAPPING THEM WITH TWO COATS OF MASTIC BANDAGE TAPE.

FOR TENDER

Rev	Description	By	Chk	App	Date

Architect:
GEOFFREY REID ASSOCIATES
 42 PORTLAND PLACE
 LONDON W1N 3DG

Yeoman House
 63 Croydon Road
 London
 SE20 7TS
 Tel: 020 8 659 9959
 Fax: 020 8 676 9515
 e-mail: 101470.3330@compuserve.com

White
 Young
 Green

Consulting Engineers

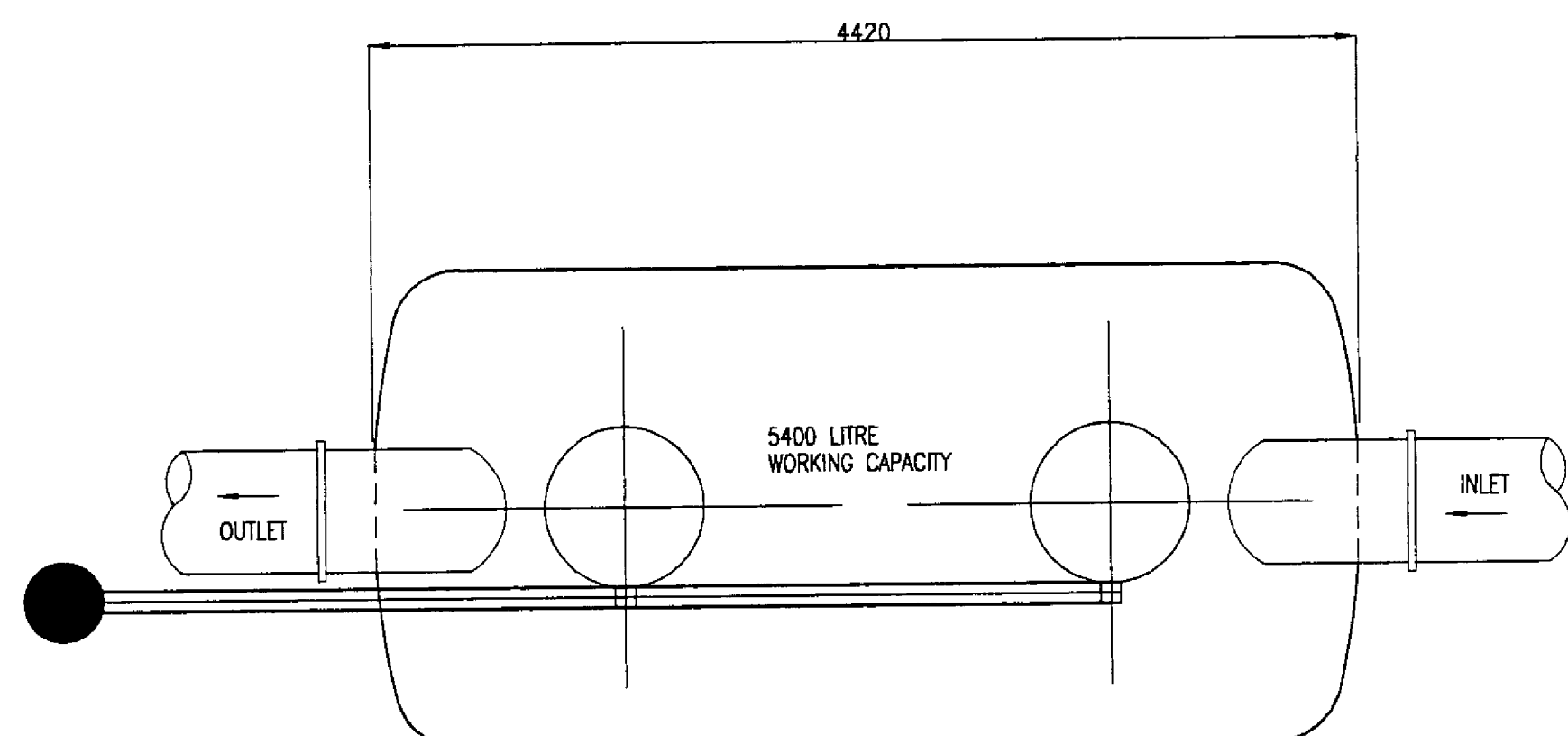
Civil Structural Mechanical Electrical Process Rail Traffic Environmental Project Management

Project:
W.T. FOODS CENTRAPARKS
 BESSEMER ROAD
 WELWYN GARDEN CITY

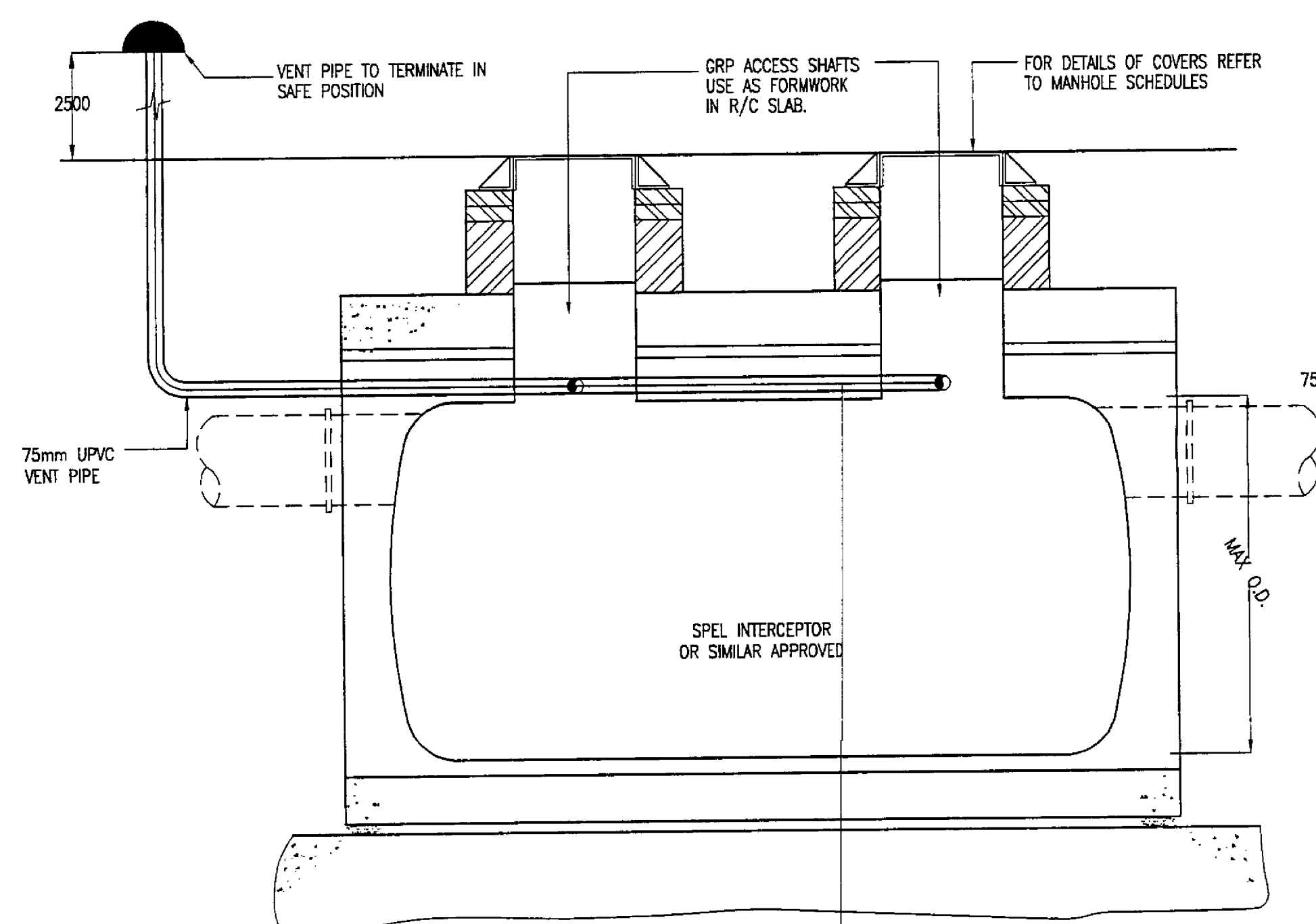
Drawing Title:
DRAINAGE STANDARD DETAILS
 (SHEET 2 OF 3)

Scale at A1	Drawn By	Date	Checked By	Date	Approved By	Date
N.T.S.	JA	02/2000	Chk: RB	12/2000	AW	19/2/00
Project No.	Office	Type	Drawing No.	Revision		
A004813	30	D	109			

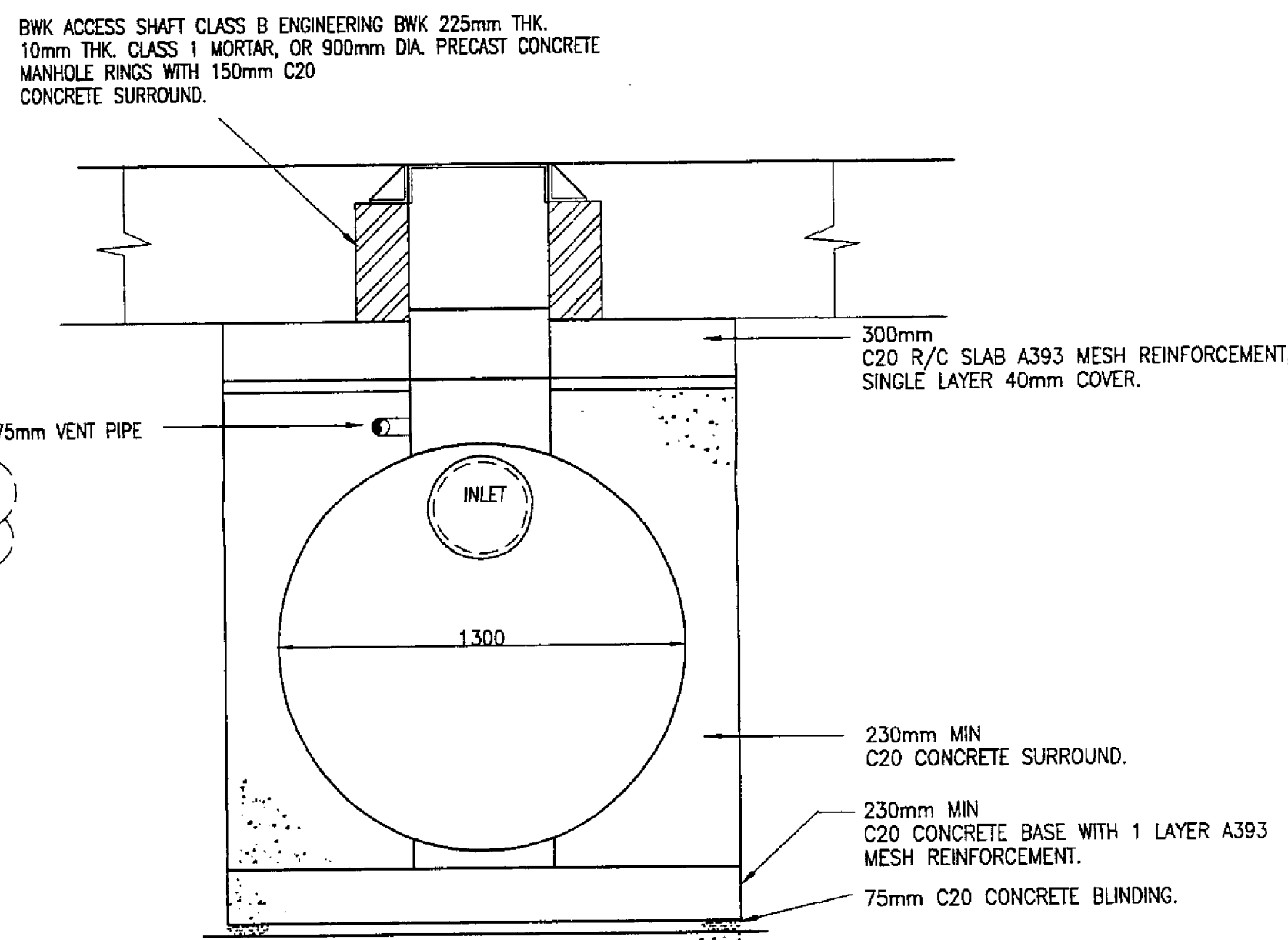
APPROVAL INFORMATION TENDER CONTRACT CONSTRUCTION



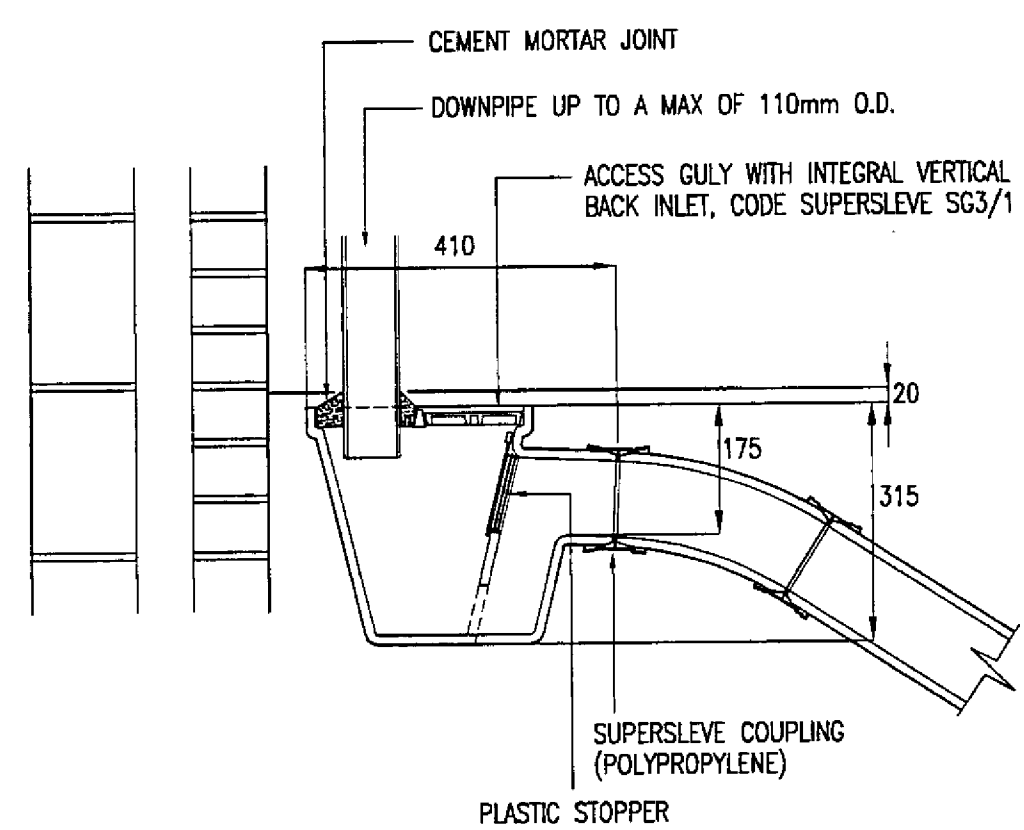
NOTES:
1. BYPASS INTERCEPTOR TO BE INSTALLED IN ACCORDANCE WITH THE MANUFACTURERS INSTALLATION GUIDE.



BYPASS INTERCEPTOR DETAIL N.T.S.



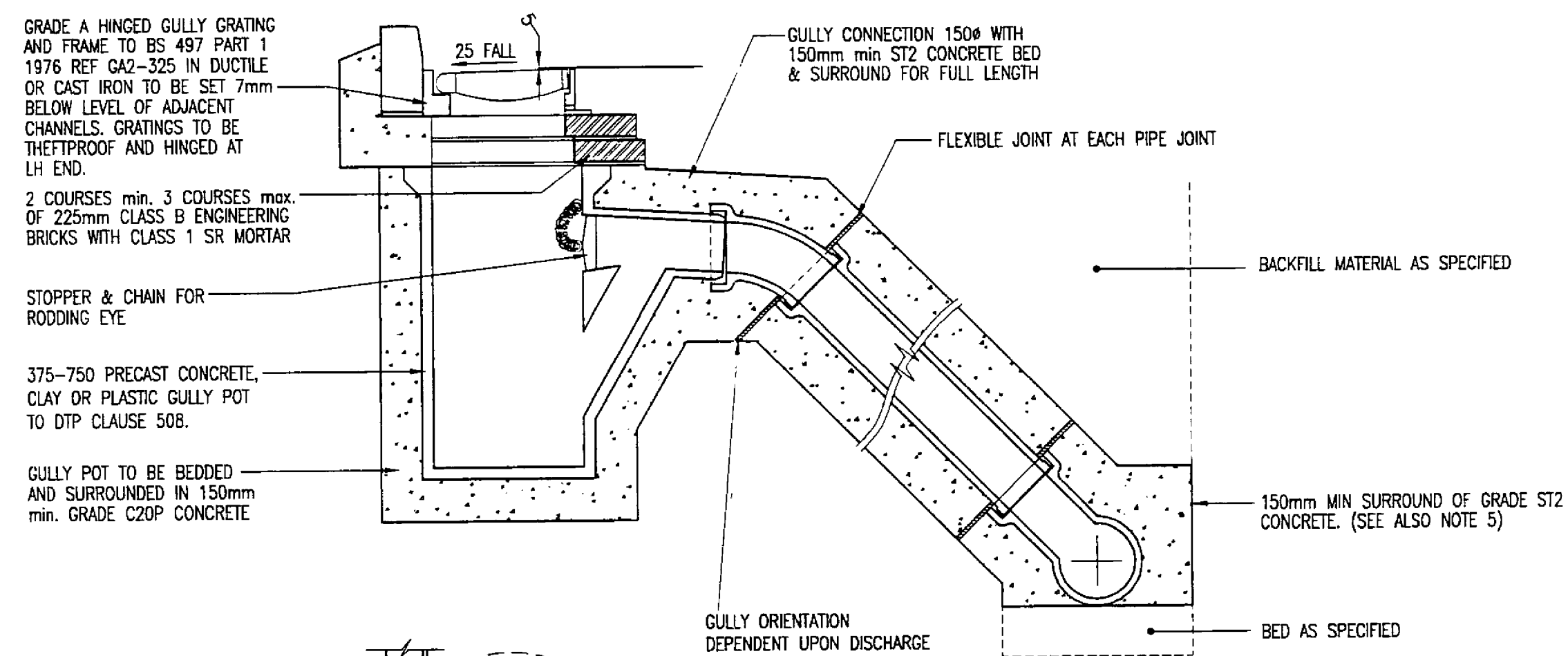
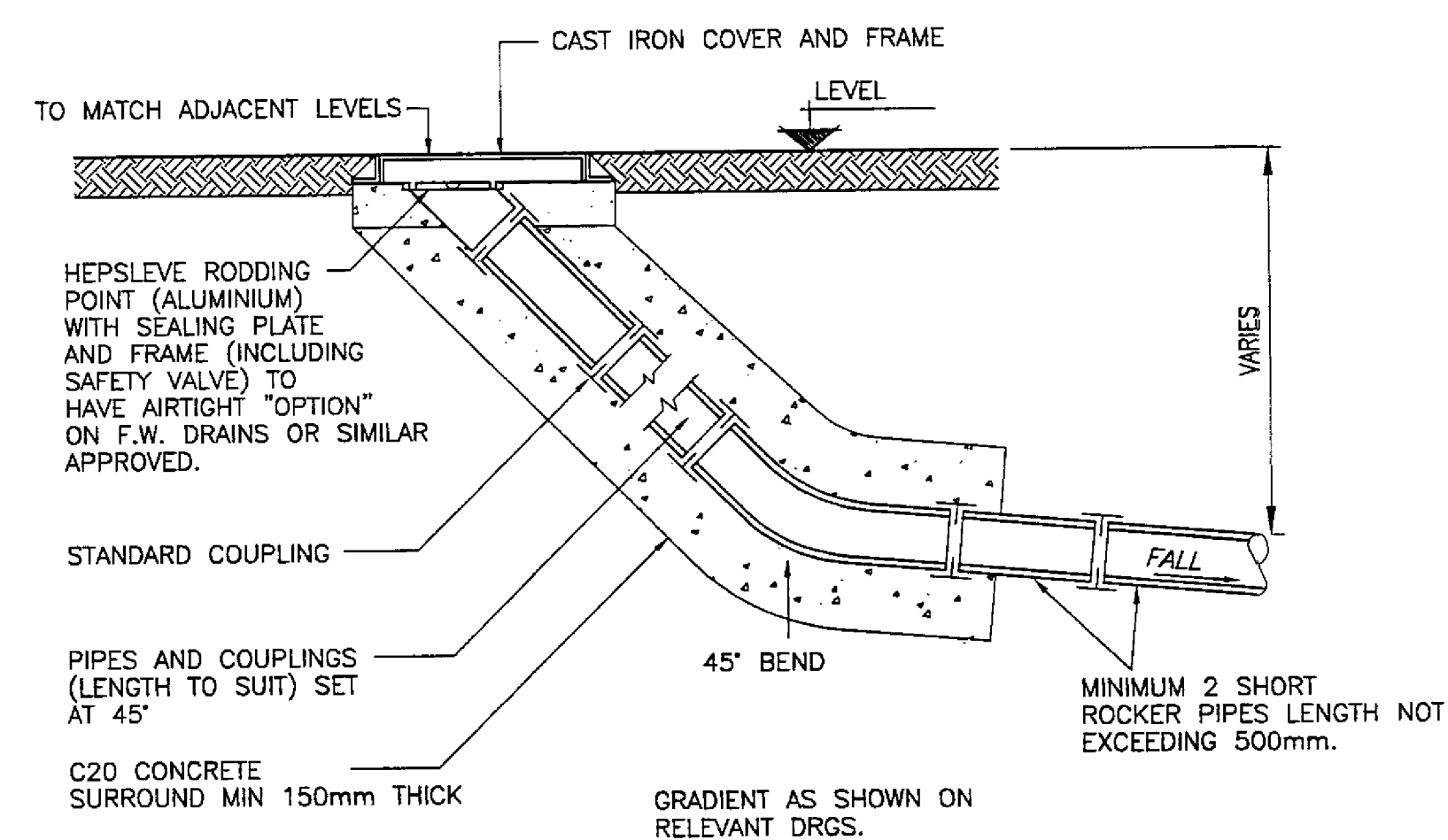
DETAIL OF EXTERNAL RODDING EYE



WHERE RWP LESS THAN 100mm DIAMETER PIPEWORK FROM ACCESS GULLY TO BE 100mm DIAMETER.
IF RWP 100mm DIAMETER OR GREATER, PIPEWORK FROM ACCESS GULLY TO BE INCREASED TO 150mm DIA. USING A TAPER PIPE.

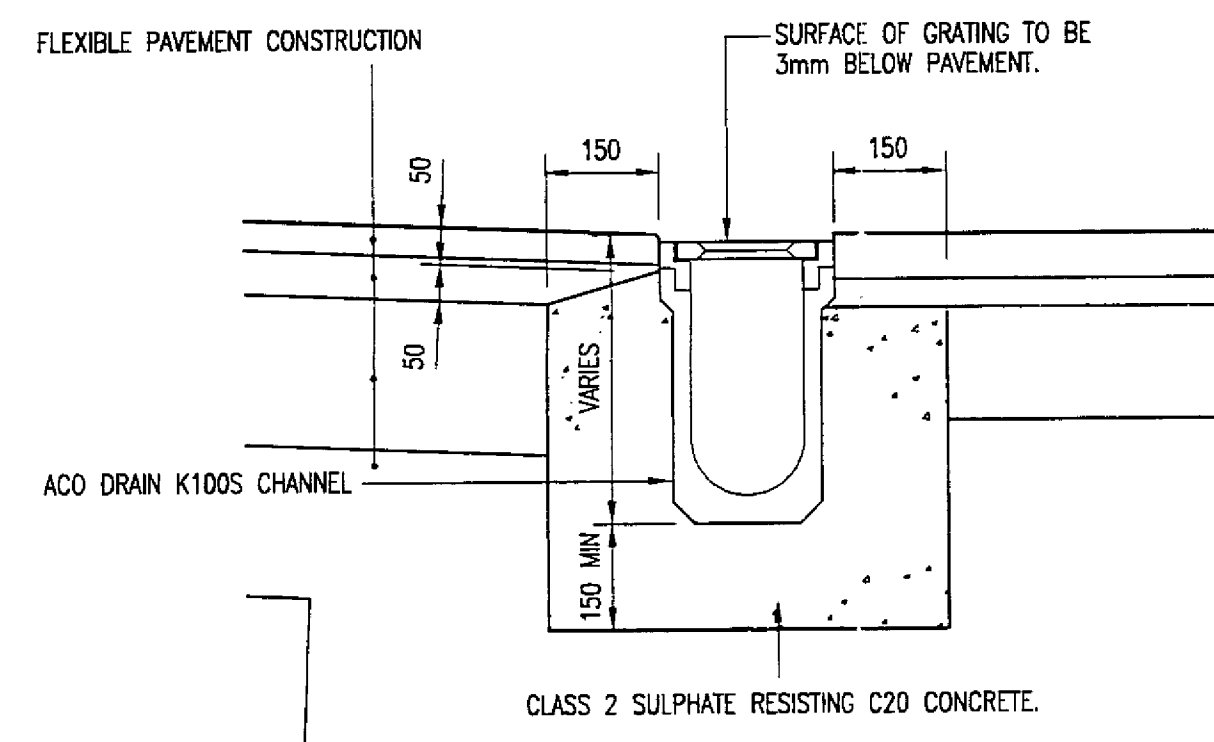
BED AND SURROUND TO SPECIFICATION AND STANDARD DETAILS

CONNECTION TO RWP N.T.S.



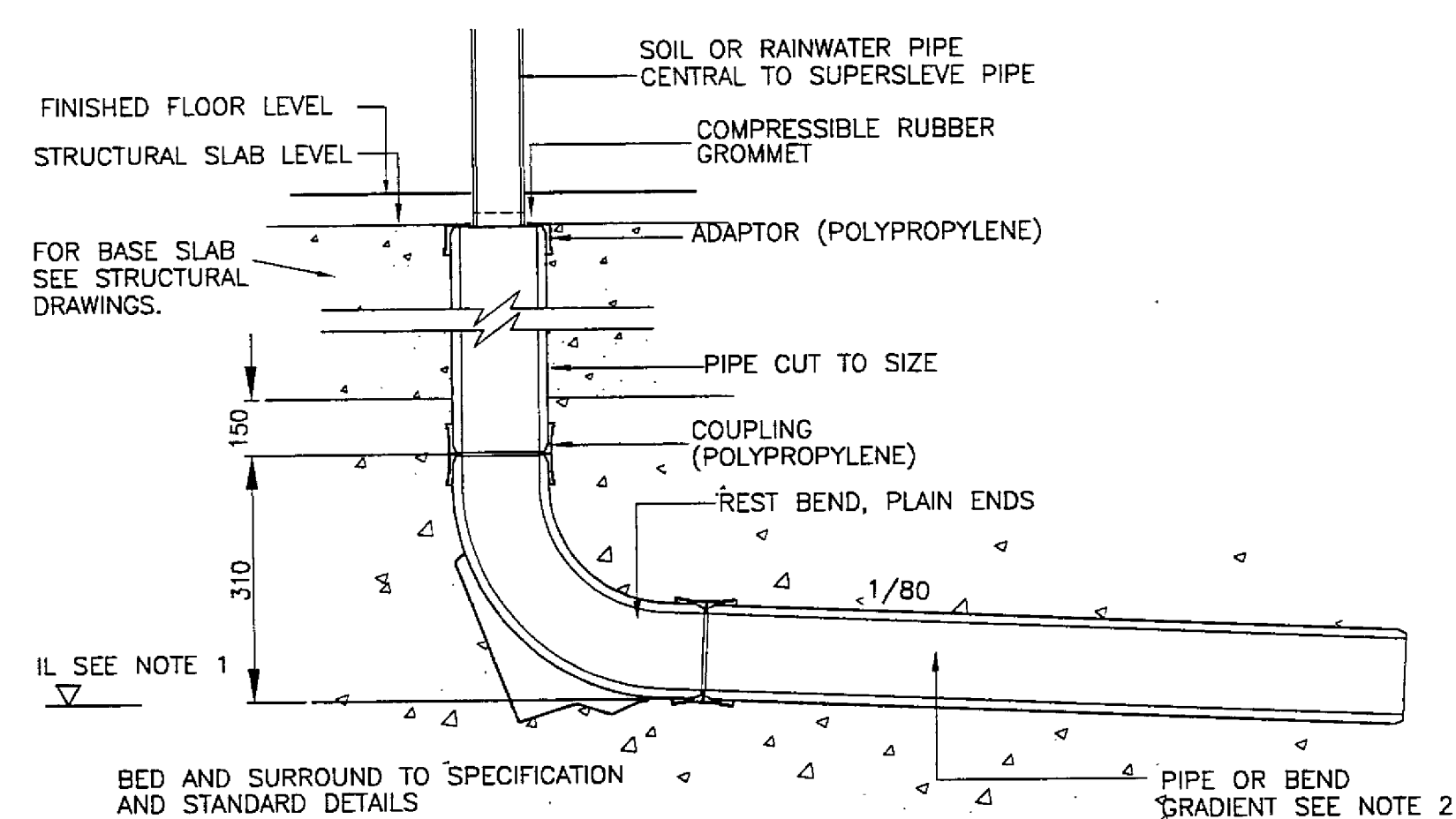
NOTES:
1. ALL DIMENSIONS IN MILLIMETRES
2. PIPES BETWEEN GULLY AND DRAIN WHETHER FLEXIBLE OR RIGID SHALL NOT EXCEED 700mm IN LENGTH AND SHALL HAVE FLEXIBLE JOINTS (SEE NOTE 3) FOR 2000mm FROM GULLY. HOWEVER FOR UNTRAPPED GULLIES THE FIRST JOINT FROM GULLY POT SHALL BE FULLY ENCLOSED IN CONCRETE AS SHOWN
3. FLEXIBLE JOINTS SHALL BE FORMED WITH 18mm THICK FIBRE BOARD, PRE-CUT TO PIPE DIA. THE HEIGHT AND WIDTH EQUAL TO THE CONCRETE CROSS SECTION
4. UNLESS OTHERWISE STATED, CONCRETE TO HAVE CLASS II RESISTANCE TO SULPHATES.
5. WHERE A PREFABRICATED JOINTION IS USED, THE CONCRETE SURROUND TO THE DRAIN JUNCTION MAY BE OMITTED.
6. EXCAVATION FOR GULLY UNDER PAVED AREA TO BE BACKFILLED IN ACCORDANCE WITH DTP CLAUSE 508

TRAPPED ROAD GULLY DETAIL N.T.S.



NOTES:
1. DRAINAGE CHANNELS TO BE ACO DRAIN K100S CHANNELS AS SUPPLIED BY ACO POLYMER PRODUCTS LTD, OR SIMILAR APPROVED INSTALLED IN ACCORDANCE WITH MANUFACTURERS INSTRUCTIONS.
2. GRATINGS TO BE HEEL GUARD LOAD CLASS C250, SLOTTED GREY CAST IRON, ACO PART No 508, FINISHED BY THE MANUFACTURER WITH NSD COATING IN BLACK
3. DRAINAGE CHANNELS IN SERVICE ROAD AND SERVICE YARD TO BE ACO DRAIN K100S CHANNELS WITH LOAD CLASS E600 GRATINGS, SLOTTED HEAVY DUTY CAST DUCTILE IRON ACO PART 504, FINISHED BY THE MANUFACTURER WITH NSD COATING IN BLACK.
4. FOUNDATION FOR CHANNELS TO BE LAID ON A ROLLED SUB-BASE OF 100mm MINIMUM THICKNESS.
5. OUTLETS TO BE ACO DRAIN DEEP GULLY PART No 612RE WITH A LOAD CLASS C250 GRATING OR LOAD CLASS E600 GRATING FOR SERVICE ROAD AND SERVICE YARD WITH 150mm MIN CLASS 2 SULPHATE RESISTING C20 CONCRETE SURROUND.

TYPICAL DRAINAGE CHANNEL DETAIL N.T.S.



NOTES:
1) FOR CONNECTIONS GENERALLY IL 61.40 UNLESS SHOWN OTHERWISE
2) GRADIENT FOR FOUL DRAINAGE RUNS UP TO BE 1/40 AND FOR SURFACE WATERS RUNS 1/100

DETAIL OF CONNECTION TO BENEATH BASE SLAB
(SOIL PIPE CONNECTION SIMILAR)

FOR TENDER

Rev	Description	By	Chk	App	Date
Abstract					

GEOFFREY REID ASSOCIATES
42 PORTLAND PLACE
LONDON W1N 3DG

Yeoman House
63 Croydon Road
London
SE20 7TS
Tel: 020 8 659 9059
Fax: 020 8 676 9515
e-mail: 101470.3330@compuserve.com

White
Young
Green

Consulting Engineers

Civil Structural Mechanical Electrical Process Rail Traffic Environmental Project Management

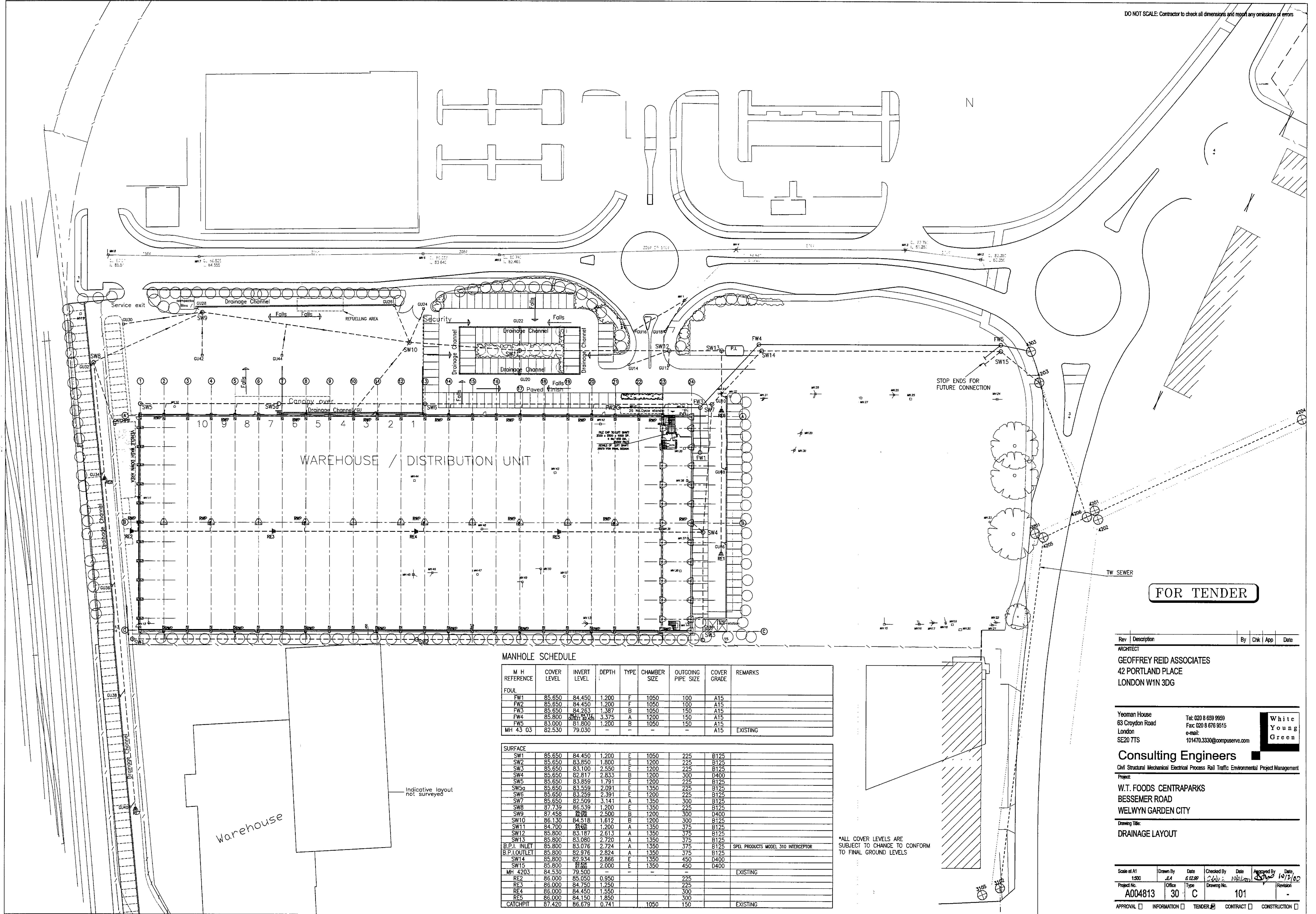
Project:
W.T. FOODS CENTRAPARKS
BESSEMER ROAD
WELWYN GARDEN CITY

Drawing Title:
DRAINAGE STANDARD DETAILS
(SHEET 1 OF 3)

Scale of A1	Drawn By	Date	Checked By	Date	Approved By	Date
N.T.S.	EA	09/22/00	C.P.	10/2/00	EA	10/2/00
Project No.	Office	Type	Drawing No.	Revision		
A004813	30	D		108		

APPROVAL INFORMATION TENDER CONTRACT CONSTRUCTION

DO NOT SCALE: Contractor to check all dimensions and report any omissions or errors



FOR TENDER

MANHOLE SCHEDULE

M H REFERENCE	COVER LEVEL	INVERT LEVEL	DEPTH	TYPE	CHAMBER SIZE	OUTGOING PIPE SIZE	COVER GRADE	REMARKS
FOUL								
FW1	85.650	84.450	1.200	F	1050	100	A15	
FW2	85.650	84.450	1.200	F	1050	100	A15	
FW3	85.650	84.263	1.387	B	1050	150	A15	
FW4	85.800	84.242	3.375	A	1200	150	A15	
FW5	83.000	81.800	1.200	B	1050	150	A15	
MH 43 03	82.530	79.030	-	-	-	-	A15	EXISTING
SURFACE								
SW1	85.650	84.450	1.200	E	1050	225	B125	
SW2	85.650	83.650	1.800	E	1200	225	B125	
SW3	85.650	83.100	2.550	E	1200	225	B125	
SW4	85.650	82.817	2.833	B	1200	300	D400	
SW5	85.650	83.859	1.791	E	1200	225	B125	
SW5a	85.650	83.559	2.091	E	1350	225	B125	
SW6	85.650	83.259	2.391	E	1200	225	B125	
SW7	85.650	82.509	3.141	A	1350	300	B125	
SW8	87.739	86.539	1.200	E	1350	225	B125	
SW9	87.458	86.258	1.200	B	1200	300	D400	
SW10	86.130	84.518	1.612	B	1200	300	B125	
SW11	84.700	83.500	1.200	A	1350	375	B125	
SW12	85.800	83.187	2.613	A	1350	375	B125	
SW13	85.800	83.080	2.720	A	1350	375	B125	
B.P.L. INLET	85.800	83.076	2.724	A	1350	375	B125	SPEL PRODUCTS MODEL 310 INTERCEPTOR
B.P.L. OUTLET	85.800	82.976	2.824	A	1350	375	B125	
SW14	85.800	82.934	2.866	E	1350	450	D400	
SW15	85.800	81.800	4.000	E	1350	450	D400	
MH 4203	84.530	79.500	-	-	-	-	-	EXISTING
RE2	86.000	85.050	0.950	-	-	-	225	
RE3	86.000	84.750	1.250	-	-	-	225	
RE4	86.000	84.450	1.550	-	-	-	300	
RE5	86.000	84.150	1.850	-	-	-	300	
CATCHPIT	87.420	86.679	0.741	-	-	-	1050	EXISTING

Indicative layout not surveyed

*ALL COVER LEVELS ARE SUBJECT TO CHANGE TO CONFORM TO FINAL GROUND LEVELS

Rev	Description	By	Chk	App	Date

ARCHITECT
GEOFFREY REID ASSOCIATES
 42 PORTLAND PLACE
 LONDON W1N 3DG

Yeoman House
 63 Croydon Road
 London
 SE20 7TS
 Tel: 020 8 659 9959
 Fax: 020 8 676 9515
 e-mail: 101470.3330@compuserve.com



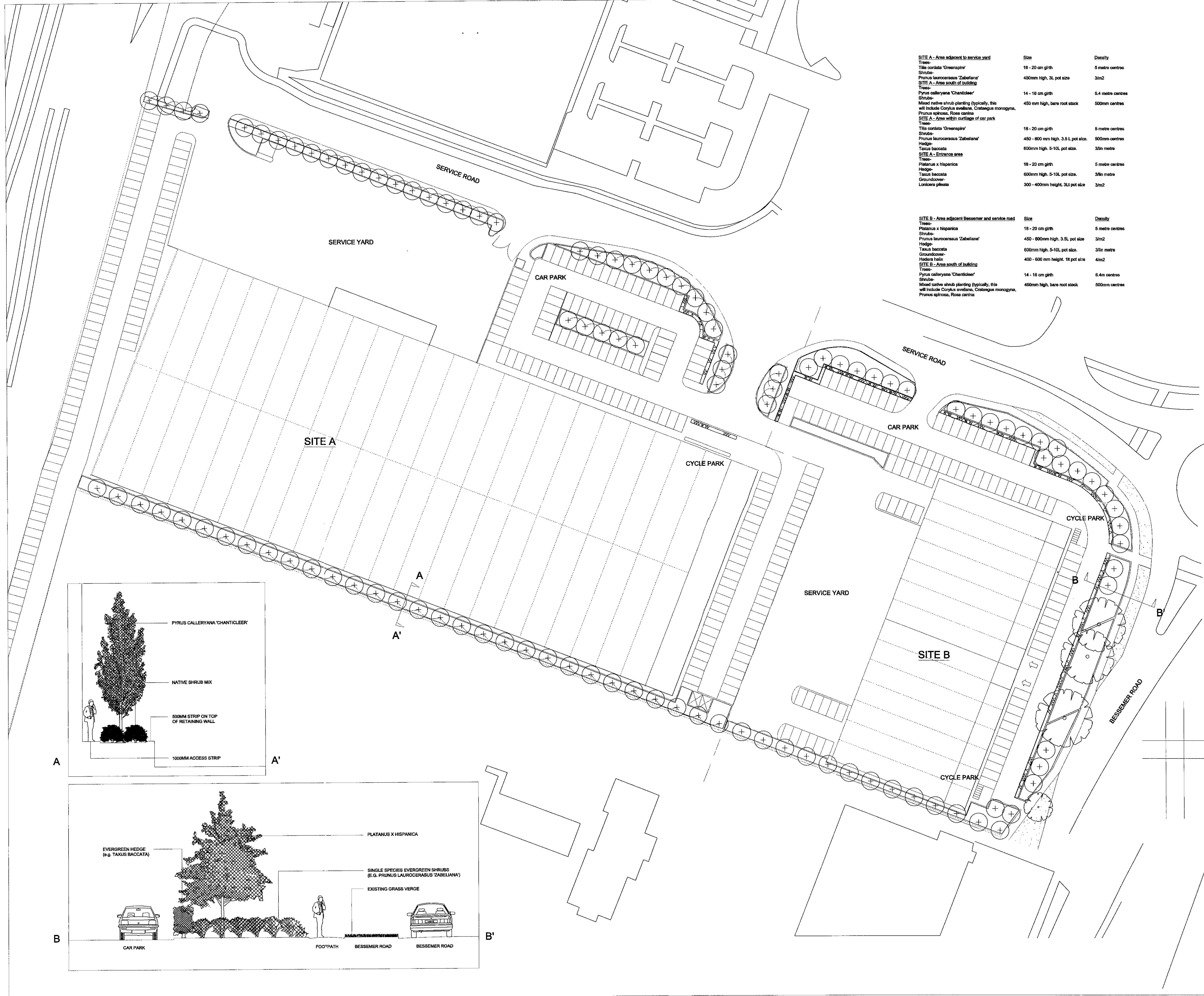
Consulting Engineers
 Civil Structural Mechanical Electrical Process Rail Traffic Environmental Project Management

Project:
W.T. FOODS CENTRAPARKS
 BESSEMER ROAD
 WELWYN GARDEN CITY

Drawing Title:
DRAINAGE LAYOUT

Scale of A1 1:200	Drawn By JEA	Date 6/22/09	Checked By SVA	Date 10/2/09	Approved By [Signature]	Date 10/2/09
Project No. A004813	Office 30	Type C	Drawing No. 101	Revision		

APPROVAL INFORMATION TENDER CONTRACT CONSTRUCTION



SITE A - Area adjacent to service yard

Plant Type	Size	Density
Trees: <i>Tilia cordata</i> 'Greenaspire'	18 - 20 cm girth	5 metre centres
Shrubs: <i>Prunus laurocerasus</i> 'Zabeliana'	450mm high, 3L pot size	3m ²

SITE A - Area south of building

Plant Type	Size	Density
Trees: <i>Pyrus calleryana</i> 'Chanticleer'	14 - 16 cm girth	6.4 metre centres
Shrubs: Mixed native shrub planting (typically, this will include <i>Corylus avellana</i> , <i>Crataegus monogyna</i> , <i>Prunus spinosa</i> , <i>Rosa canina</i>)	450 mm high, bare root stock	500mm centres

SITE A - Area within carriage of car park

Plant Type	Size	Density
Trees: <i>Tilia cordata</i> 'Greenaspire'	18 - 20 cm girth	5 metre centres
Shrubs: <i>Prunus laurocerasus</i> 'Zabeliana'	450 - 600 mm high, 3.5 L pot size	500mm centres
Hedge: <i>Taxus baccata</i>	600mm high, 5-10L pot size	3/m metre

SITE A - Entrance area

Plant Type	Size	Density
Trees: <i>Platanus x Hispanica</i>	18 - 20 cm girth	5 metre centres
Hedge: <i>Taxus baccata</i>	600mm high, 5-10L pot size	3/m metre
Groundcover: <i>Lonicera pileata</i>	300 - 400mm height, 3L pot size	3m ²

SITE B - Area adjacent Bessemer and service road

Plant Type	Size	Density
Trees: <i>Platanus x Hispanica</i>	18 - 20 cm girth	5 metre centres
Shrubs: <i>Prunus laurocerasus</i> 'Zabeliana'	450 - 600mm high, 3.5L pot size	3m ²
Hedge: <i>Taxus baccata</i>	600mm high, 5-10L pot size	3/m metre
Groundcover: <i>Hieracium italicum</i>	400 - 600 mm height, 18 pot size	4/m ²

SITE B - Area south of building

Plant Type	Size	Density
Trees: <i>Pyrus calleryana</i> 'Chanticleer'	14 - 16 cm girth	6.4m centres
Shrubs: Mixed native shrub planting (typically, this will include <i>Corylus avellana</i> , <i>Crataegus monogyna</i> , <i>Prunus spinosa</i> , <i>Rosa canina</i>)	450mm high, bare root stock	500mm centres

NOTES
This drawing is the copyright of Hyland Edgar Driver. It must not be copied or reproduced without written consent. Only the dimensions are to be taken from this drawing. All contractors must visit the site and be responsible for taking and checking all dimensions related to the works shown on this drawing.

- EXISTING TREES
- PROPOSED TREES
- PROPOSED SHRUBS
- PROPOSED GROUNDCOVER
- EXISTING GRASS
- PROPOSED HEDGE
- CROSS SECTIONS
- CROSS SECTIONS

REVISION NUMBER	REVISIONS

H | E | D
Hyland Edgar Driver
Landscape Architecture Environmental Consultancy

Forstholme Farm Wickham Road Forstham Hampshire PD16 7JH
Telephone 01329 826616 Facsimile 01329 826138

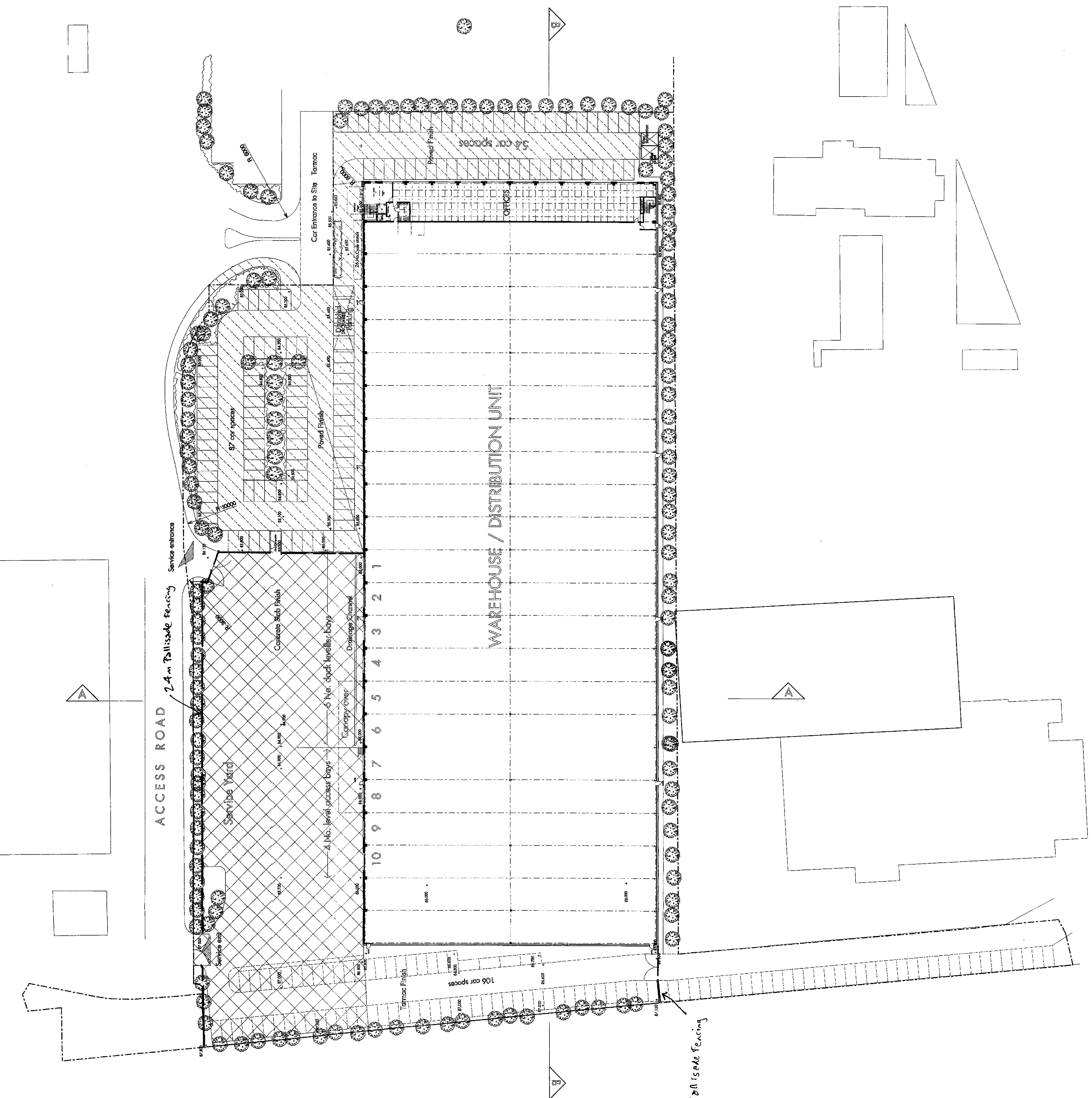
PROJECT
**CENTRAPARK
BESSEMER ROAD
WELWYN GARDEN CITY**

SUBJECT
PLANTING MASTERPLAN

DATE	DRAWN BY		
29.03.00	MT		
SCALE	CHECKED BY		
1/500	SA		
DRAWING NUMBER	REVISION		
352.001	-		
DRAWING STATUS	A		
A - PRELIMINARY	B - ISSUED FOR PLANNING	C - ISSUED FOR DESIGN	D - ISSUED FOR TENDERS
E - ISSUED FOR APPROVAL	F - ISSUED FOR CONSTRUCTION	G - AS BUILT	H - AS BUILT

BESSEMER ROAD

RANK XEROX SITE



LEGEND
84.000 PROPOSED LEVEL
87.890 EXISTING LEVEL

PROJECT
CENTRAPARK
BESSEMER ROAD
WELWYN GARDEN CITY

PROPOSED SITE LAYOUT

© G E O F F R E Y R B I D A S S O C I A T E S

42 Woodford Place
London W12 0BT
Telephone 0171 631 4648
Facsimile 0171 635 1710
Email gfr@geoffrey.co.uk

Architectural Landscape
Planning, Surveying
Planning Supervision
Research & Development

DRAWING NO
99100210/02

DATE
1/12/99

SCALE
1:500

DRAWN
G.W.

CHECKED

APPROVED
M.H.S. or S.A. 1/2/99