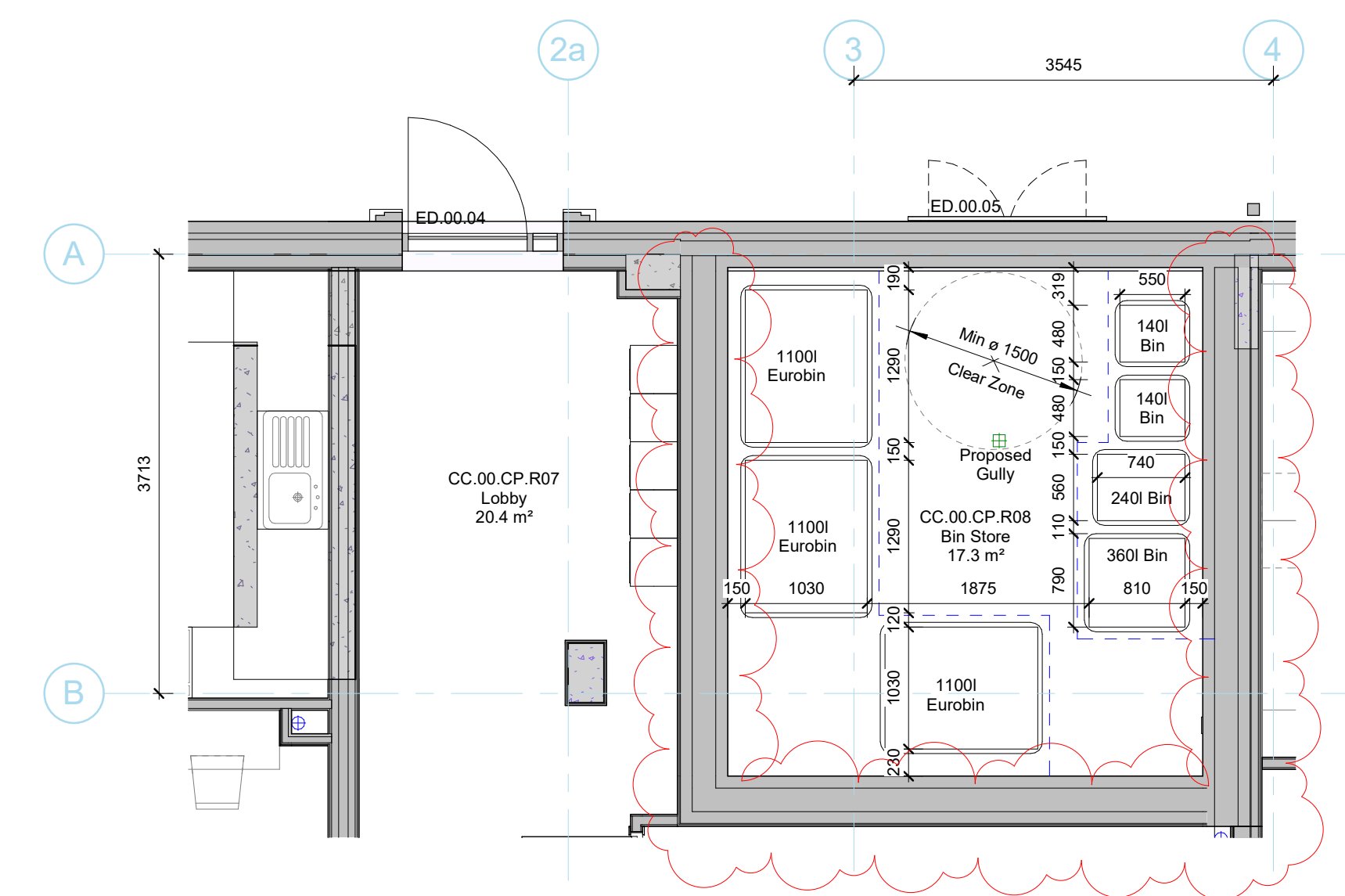


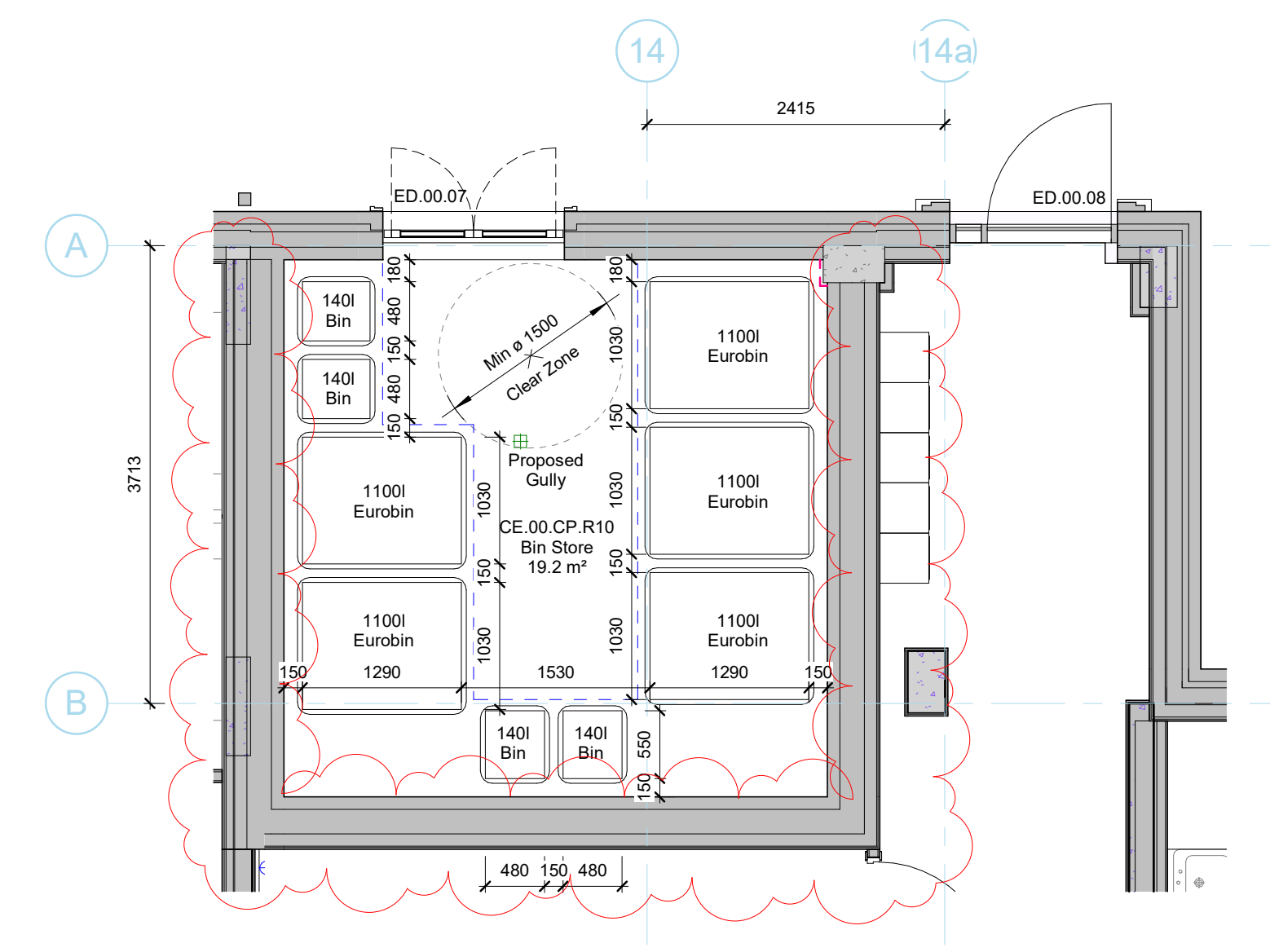
1 Bin Store 1 - Core A
1 : 50

BLOCK A REFUSE AND RECYCLING CAPACITY BASED ON:
2 BED = 10 UNITS
1 BED = 5 UNITS
TOTAL CAPACITY REQUIRED = 2400L



2 Bin Store 2 - Core C
1 : 50

BLOCK C REFUSE AND RECYCLING CAPACITY BASED ON:
2 BED = 8 UNITS
1 BED = 11 UNITS
TOTAL CAPACITY REQUIRED = 2760L

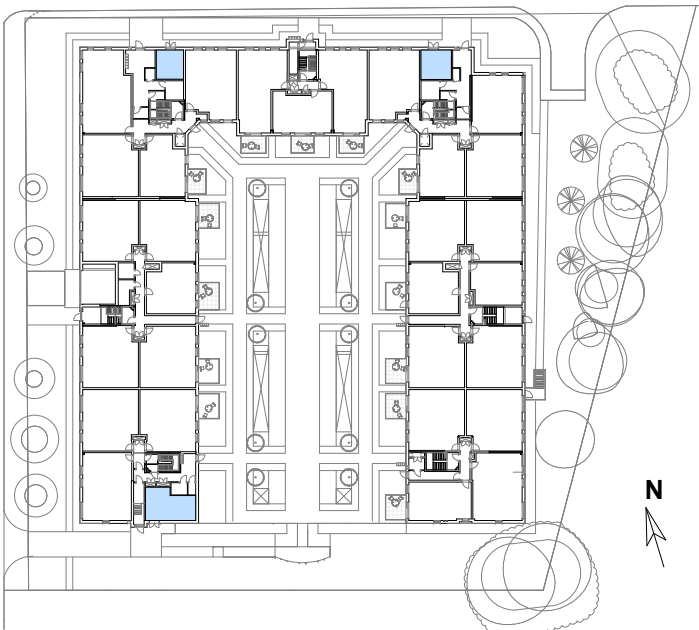


3 Bin Store 3 - Core D&E
1 : 50

BLOCK D REFUSE AND RECYCLING CAPACITY BASED ON:
2 BED = 8 UNITS
1 BED = 4 UNITS
TOTAL CAPACITY REQUIRED = 1920L

BLOCK E REFUSE AND RECYCLING CAPACITY BASED ON:
2 BED = 11 UNITS
1 BED = 6 UNITS
TOTAL CAPACITY REQUIRED = 2940L

COMBINED TOTAL = 4860L



- KEY:**
- Indicative rumble strip and low level barrier (2 or 3 sides) to restrict movement of bins and provide clear circulation space
 - Corner protection to boxing out and walls around bin stores
- NOTES:**
- Drawings to be read in conjunction with all relevant Architect's packages, including external walls, internal walls, GA floor plans, RCP's & NBS Specification.
 - Drawings to be read in conjunction with Structural Engineer's details and specifications.
 - Drawings to be read in conjunction with M&E's details and specification.
- Refuse calculations based upon combined refuse and recycling litres provided by Welwyn Hatfield Borough Council & Welwyn and Hatfield's Recycling and Refuse Separation and Storage Planning Guidance document.
- 1 Bed = 120l / week
2 Bed = 180l / week
3 Bed = 220l / week

Rev	Date	Revision Details	Dr	Ch
P02	29.07.24	Revised to reflect updated wall types & additional 140l bin to external bin store core B&F	RS	DU
P01	17.07.24	Preliminary Issue	RS	JW

London: 76 Great Suffolk Street, London, SE1 0BL
T 020 7928 2773 E london@ecearchitecture.com
Sussex: 64-68 Brighton Road, Worthing, West Sussex, BN11 2EN
T 01903 248777 E sussex@ecearchitecture.com
Bristol: Westworks, Beacon Tower, Colston Street, Bristol, BS1 4XE
T 0117 214 1101 E bristol@ecwestworks.com
ECE Architecture
www.ecearchitecture.com

Client Name
Hightown Housing Association

Job Title
**29 Broadwater Road
Welwyn Garden City**

Drawing Title
Proposed Internal Refuse Stores Setting Out

Scale
1:50 @ A1 / 1:100 @ A3

Drawn
RS

Checked
JW

Date
17/07/24

Project
BRW01-ECE-XX-00-DR-A-88001_P02

Status

S3 - For Review and Comment