

Architectural elevation drawing of a two-story brick house. The house features a gabled roof with grey shingles. The main body of the house is constructed of red brick, while the gable ends are finished with a red patterned tile. The ground floor (0.000) includes a large dark grey double door with a transom window on the left and a smaller dark grey single door with a transom window on the right. The first floor (2.625) has two multi-paned windows, each with a decorative brick lintel. The second floor (5.250) also features two multi-paned windows, with the left one set within a gable. A horizontal dashed line indicates the level of the second floor. A vertical dashed line on the right side of the house indicates the edge of the elevation. A grey horizontal bar is at the bottom of the page.

This is a detailed architectural elevation drawing of a two-story residential building. The structure is primarily constructed of red brick with a traditional running bond pattern. The roof is gabled, covered in dark grey shingles, and features a white fascia and soffit. On the front facade, there are two identical double-hung windows, each with a white frame and a decorative brick lintel and sill. A horizontal line of decorative brickwork, consisting of a row of raised circular motifs, runs across the middle of the wall. To the left, a side entrance is visible, featuring a white door and a small, light-colored rectangular window above it. On the right side, a small section of a chimney or gable end is visible, constructed from a different brick pattern. The building is set against a plain white background, with a grey ground plane at the base.



An architectural elevation drawing of a two-story brick house. The house features a gabled roof with grey shingles. A small dormer window with a white frame is positioned on the upper floor. The main facade is constructed of red brick. A double door with white frames is located on the right side of the ground floor. A horizontal line of decorative elements, possibly a string of beads or a row of small windows, runs across the middle of the brick wall. The house is set against a plain white background, with a grey base representing the ground level.

**Reedmaker Bespoke**

5 bed 8 person house

Plots: 82,88

Handed: 81

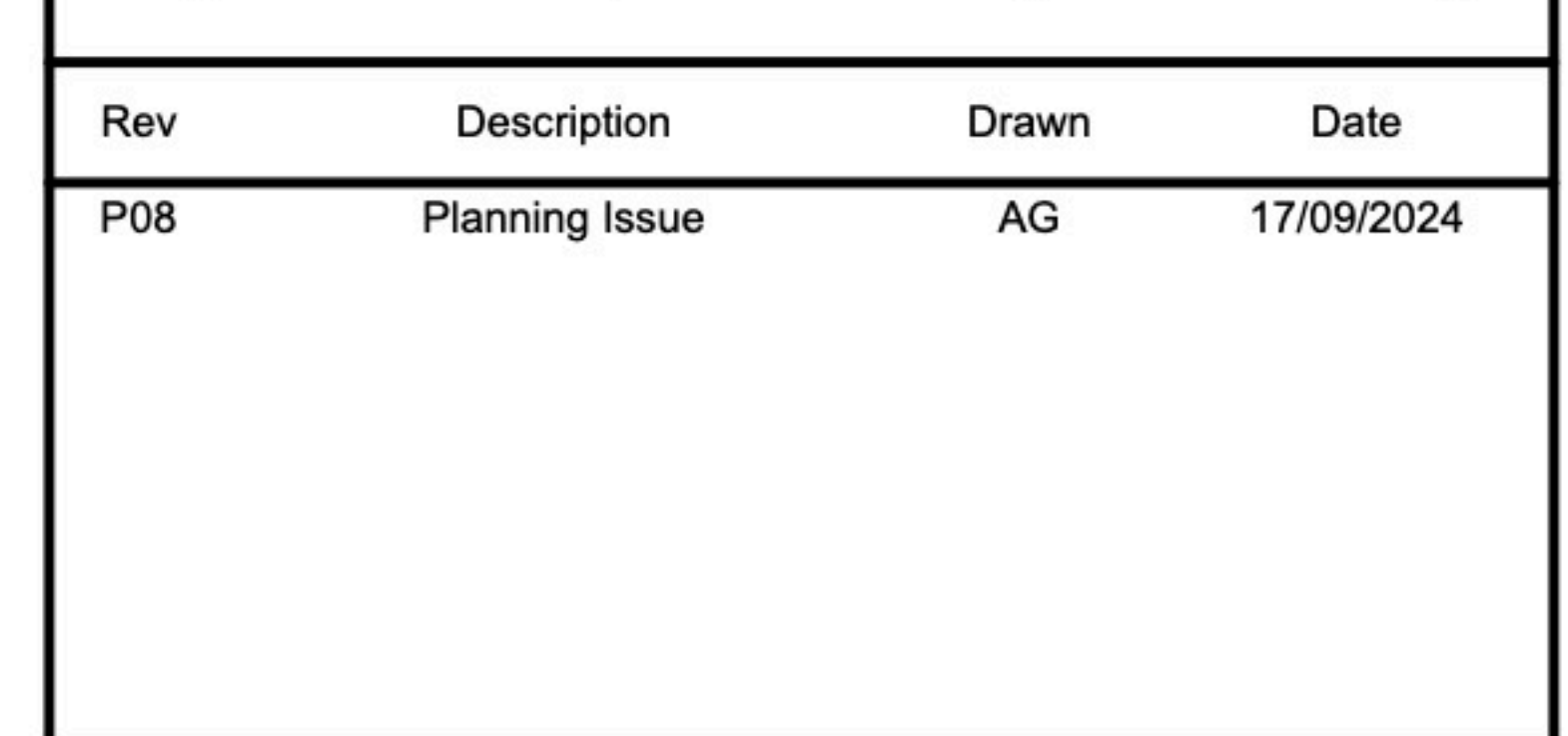
5 bed 8 person house

Plots: 82,88

Handed: 81

Plots: 82,88  
Handed: 81

Handed: 81

[illegible]

\_\_\_\_\_



T: 0207 620 6255  
E: [info@gsa-studios.com](mailto:info@gsa-studios.com)  
W: [www.gsa-studios.com](http://www.gsa-studios.com)

\_\_\_\_\_



\_\_\_\_\_

\_\_\_\_\_

project originator volume level type role number <b>1404-GSA-RE2-ZZ-DR-A-3100</b>	revision <b>P08</b>
Native model: Reedmaker Beigoke	

---