

WILL+PARTNERS



Landscaping Plan

18/11/2023 REV C

CONTENTS

LANDSCAPING PLAN

LANDSCAPING LAYOUT

GARDEN LAYOUT - COMMUNAL GARDEN AREA
(FURNITURE TYPES AND FLOOR FINISHES)

GARDEN LAYOUT - REAR ACCESS & SMOKING
AREA *(FURNITURE TYPES AND FLOOR FINISHES)*

GARDEN LAYOUT - ENTIRE SCHEME
(RENDER)

GARDEN LAYOUT - COMMUNAL GARDEN AREA
(RENDER)

GARDEN LAYOUT - REAR ACCESS & SMOKING
AREA *(RENDER)*

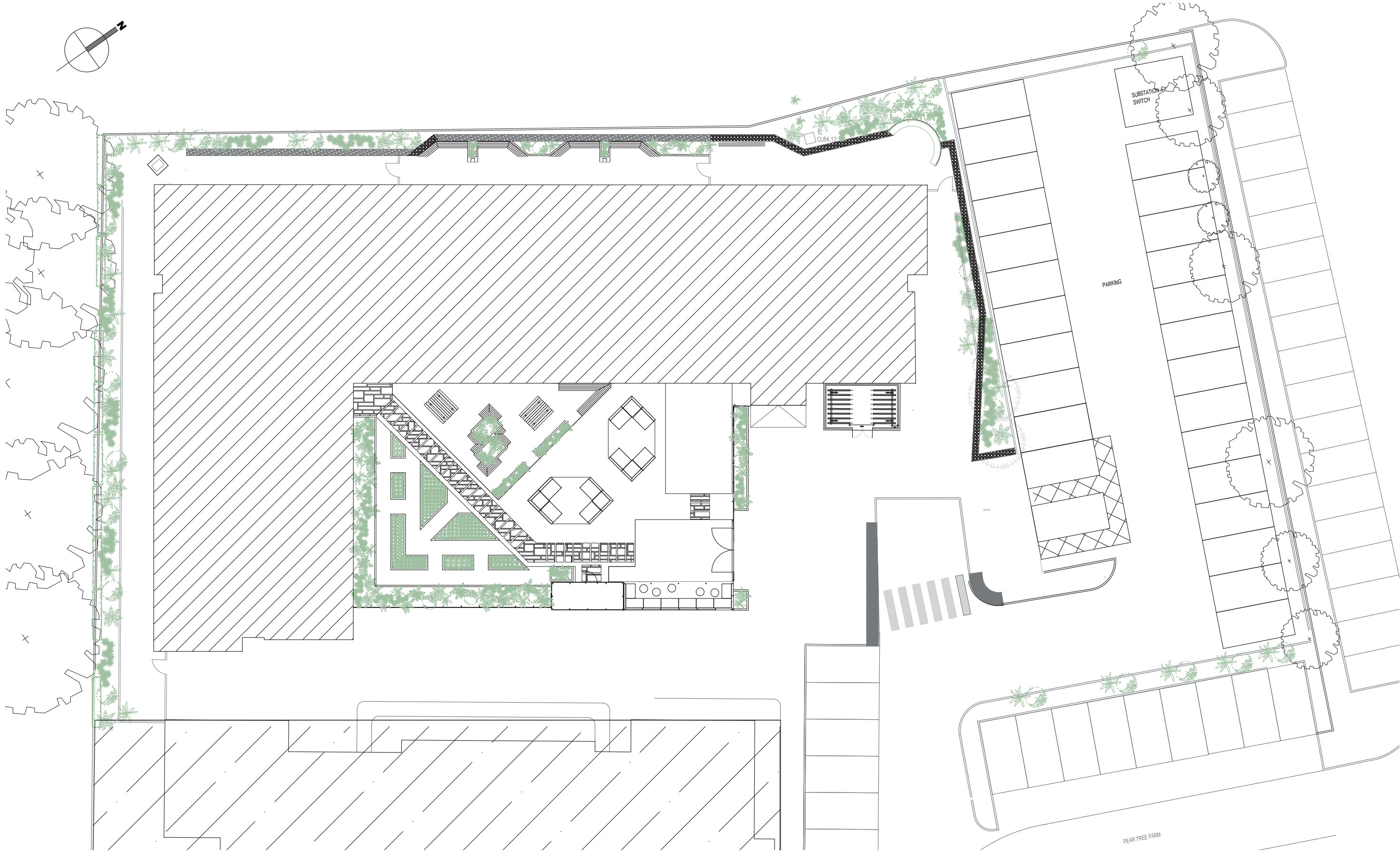
LANDSCAPE GARDEN PLANS
(INFORMATION)

LANDSCAPE GARDEN PLANS
(PLANTING SCHEDULE)

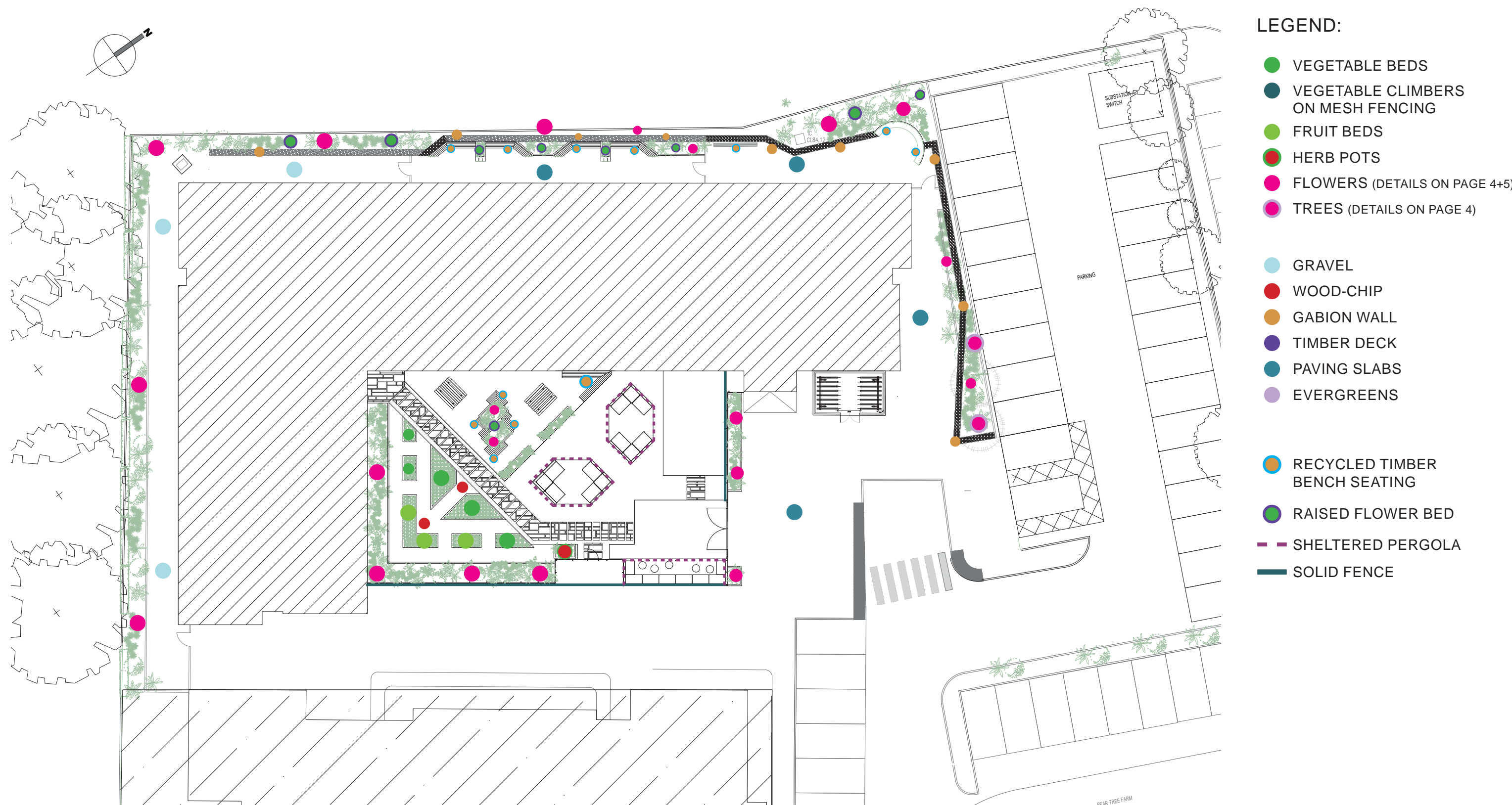
BEEES AND FLOWERS

VEGETABLE GARDENS

LANDSCAPING PLAN

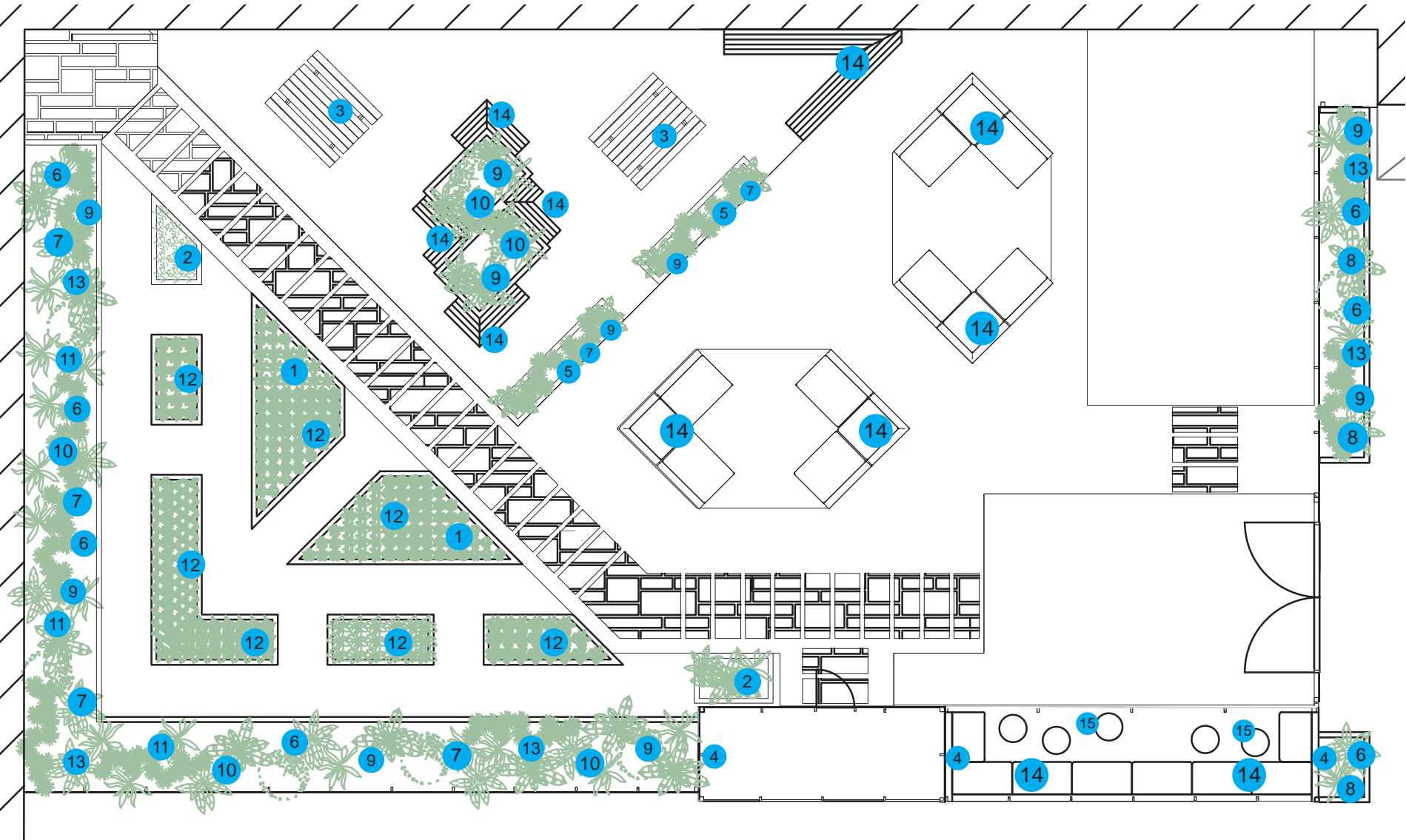


LANDSCAPING LAYOUT



GARDEN LAYOUT - COMMUNAL GARDEN AREA

TYPES OF FLOWERS & FURNITURE



LEGEND:



8 Berberis Thumbergii Atropurpurea



12 Fruit & Vegetable Patches



9 Catmint



13 Heather



10 Photania Red Robyn Hedge



14 Recycled Timber Bench Seating Encased with Evergreen Shrubs



1 Vegetable Climbers



2 Recycled Timber Herb Boxes



5 Sunflowers



3 Solid Timber Picnic Tables



6 Hellebore



4 Clematis or Wisteria to Cascade over time Pergola



7 Michaelmas Daisies



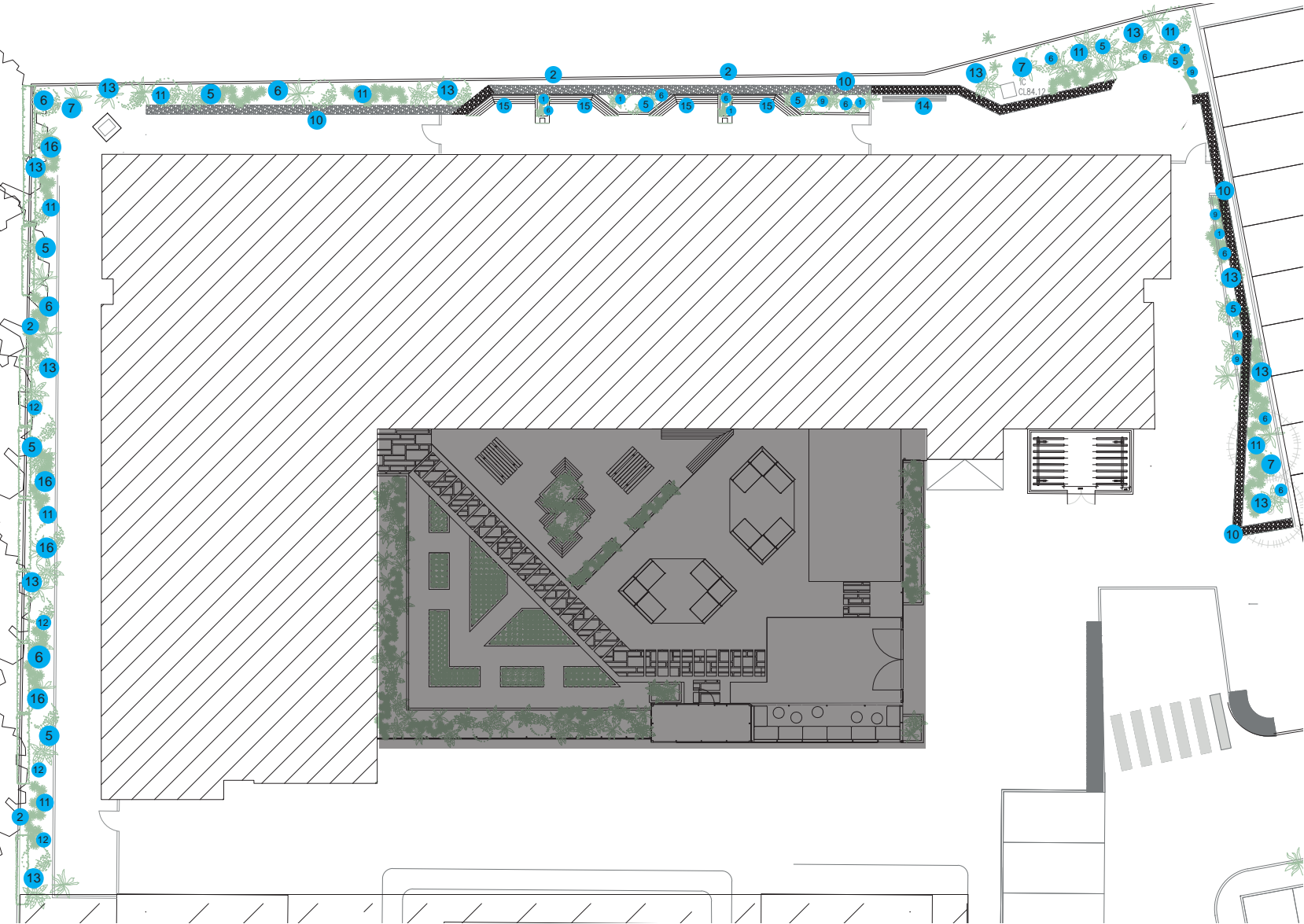
11 Centaurea Montana



15 Recycled Tyre Stools YMCA Brand Colours For the Rope

GARDEN LAYOUT - QUIET AREA & SMOKING AREA

TYPES OF FLOWERS & FURNITURE



LEGEND:



1 Photania Red Robyn Hedge



2 Clematis or Wisteria to Cascade over time Pergola



4 Clematis or Wisteria to Cascade over time Pergola



5 Clematis



6 Michaelmas Daisies



7 Spring Blossom



8 Recycled Timber Raised Planter



9 Berberis Thumbergii Atropurpurea



10 Gabion Wall



11 Hellebore



12 Centaurea Montana



13 Evergreen



14 Bench encased by Raised Flower Bed



15 Recycled Timber Bench Seating



16 Clematis

GARDEN LAYOUT - ENTIRE SCHEME
RENDER



GARDEN LAYOUT - COMMUNAL GARDEN AREA
RENDER




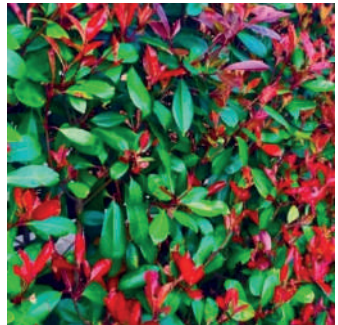



GARDEN LAYOUT - QUIET AREA & SMOKING AREA
RENDER





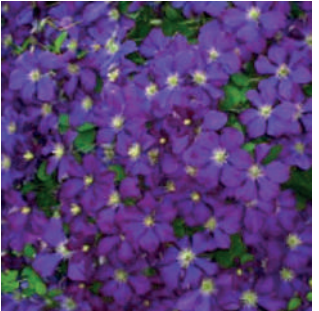
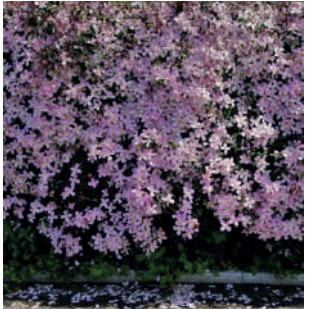

LANDSCAPE GARDEN PLANTS

INFORMATION

	Plant Type	Size of Plant	Location	Space Needed	Bestime to Plant	Extra Information
	Berberis Thumbergii Atropurpurea	Grows from 12 in. to 6 ft. high and across (30-180 cm)	Community Garden Quiet & Smoking Area	Plant 1.5-2ft apart	Between October & April <i>(so long as the ground is not frozen or waterlogged at the time of planting)</i>	
	Catmint	3 Feet Tall by 3 Feet Wide	Community Garden	Plant 30 and 60 cm apart	Autumn or Spring <i>(so long as they're kept watered during dry spells until established)</i>	Depending on the ultimate spread of the variety, space plants between 30 and 60 cm apart.
	Heather	They will vary in height from a few centimeters to about 3-4 meters	Community Garden	5 plants per square metre (4 per square yard)	Spring (although some can be planted in autumn.)	
	Photania Red Robyn Hedge	mature height of 7m and a spread of 3m. Growing at a rate of up to 30cm a year	Community Garden Quiet & Smoking Area	2 plants per metre, 50cms apart	Autumn through to Spring (whenever the ground is not frozen or waterlogged. However, they can be planted at other times of year as long as the soil around the roots is watered to keep it moist)	Pruning is only required twice a year to keep your hedge/tree under control and in shape. Trim new shoots to encourage bright red re-growth.
	Centaurea Montana <i>(Mountain Cornflower)</i>	Grows up to 12-24 in. tall (30-60 cm) and 12-18 in. wide (30-45 cm)	Community Garden Quiet & Smoking Area	Grows up to 12-24 in. tall (30-60 cm) and 12-18 in. wide (30-45 cm) Plant 15 in – 18 in (37cm – 45cm) apart	Late Spring, Early Summer	Performs best in full sun or light shade in average, dry to moist, well-drained soils



LANDSCAPE GARDEN PLANTS

INFORMATION

	Sunflower	Rough hairy stem 1–4.5 metres (3–15 feet) high and broad, coarsely toothed, rough leaves 7.5–30 cm (3–12 inches) long arranged in spirals. The attractive heads of flowers are 7.5–15 cm wide in wild specimens and often 30 cm or more in cultivated types	Community Garden	Sown 1-inch deep, spacing the seeds 6 to 36-inches apart, depending on the variety	Late spring (Once the ground is nice and warm)	<p>You can also sow several seeds close together and remove the weaker ones after a few weeks</p> <p>Most sunflowers germinate when soil has reached 70 to 85 degrees F</p>
	Hellebore	Compact, 30–45cm (12–18in) tall,	Community Garden Quiet & Smoking Area	Hellebores don't like to being planted too deep. Space plants 35–45cm (14–18in) apart	Autumn to Spring (they can be planted at any time of year, although it's best to avoid the dry summer months)	
	Purple Clematis	8ft to 12ft	Quiet & Smoking Area	Plant 24 in to 36 in apart (For aggressive growing varieties, space them a bit further apart and or bush types space them a little closer)	Spring or early to mid Autumn (Moist & warm soil, but not too hot at these times of year aids good root establishment)	You can plant clematis in summer, but you'll need to water it more frequently to help it establish well.
	Pink Clematis	9-10 ft. long (270-300 cm) and 6-8 ft. wide (180-240 cm).	Quiet & Smoking Area	Plant 24 in to 36 in apart (For aggressive growing varieties, space them a bit further apart and or bush types space them a little closer)	Spring or early to mid Autumn (Moist & warm soil, but not too hot at these times of year aids good root establishment)	You can plant clematis in summer, but you'll need to water it more frequently to help it establish well.
	Clematis to Cascade over the Pergola	Stems reach 6 to 7 ft. long	Community Garden Quiet & Smoking Area	Plant 1ft to 2ft apart	Spring or Summer (Thrives in well-drained, lightly alkaline soil, with roots sheltered and top growth in the sun. Mulch to conserve moisture.)	

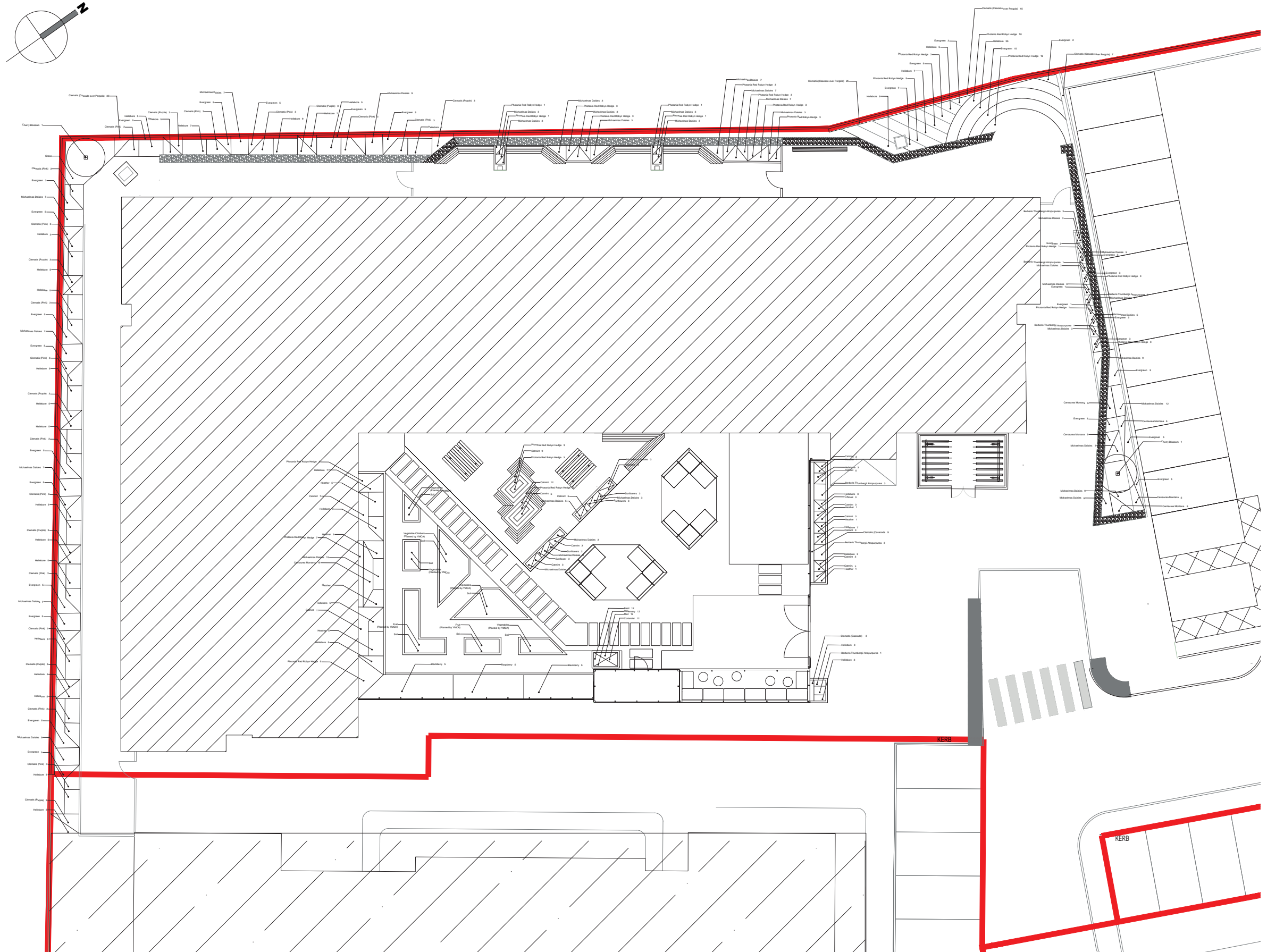
LANDSCAPE GARDEN PLANTS

INFORMATION

	Wisteria to Cascade over Wall	25 ft to 30 ft long	Quiet & Smoking Area	Plant 10ft to 15ft apart	Between October and April (Plant in fertile, well-drained soil. Best in full sun so choose a south or west facing wall or pergola)	The blooms will only appear on new wood. The vines will fill in quickly. Once planted, wisterias require little pampering to encourage robust growth. During the first year, water regularly until the roots establish
	Michaelmas Daisies	Reaching between 50cm to 1m tall	Community Garden Quiet & Smoking Area	Plant 1ft to 2ft apart	Divide mature clumps between Late Autumn and spring (good, humus-rich garden soils)	Place the daisy in the hole so the root ball is flush with the surface of the soil Daisies are fast-growing, so be sure to give the root balls room to expand in your garden.
	Evergreen	Can reach mature height of 20ft to 60ft (some dwarf varieties of evergreens only reach 4ft to 6ft)	Quiet & Smoking Area	Plant between 60cm and 100cm apart (Hedges with plants 60cm apart fill in quicker than those planted 100cm apart but you get just as good a hedge in the long run at either distance apart)	Bet planted in early to late Spring or early to mid Autumn	They like sunny spots, so a south or west facing border is deal Grow in a sheltered spot, away from cold, drying winds
	Cherry Blossom Tree	Between 40ft to 50ft Tall (The Cherry Blossom Tree exhibits a moderate growth rate, ranging between 2 and 4 feet a year)	Quiet & Smoking Area	Ultimate Spread is up to 5m (16ft)	Spring and Autumn (As the soil is warm and moist and not too dry or cold)	Dig a hole 60x60cm (2x2ft) and 30cm (12in) deep. Add a layer of organic matter such as compost or well-rotted manure to the base of the hole and dig in

LANDSCAPE GARDEN PLANTS

PLANT SCHEDULE



LANDSCAPE GARDEN PLANTS

PLANT SCHEDULE

Planting Schedule				
Herbs	Number	Height	Width	Planted by YMCA
Basil	12	304mm - 608mm	203mm - 304mm	
Coriander	12	304mm - 558mm	101mm - 254mm	
Mint	12	304mm - 608mm	200mm	
Rosemary	12	1219mm	1219mm	
Fruits	Number	Height	Width	
Blackberry	10	1524mm - 1828mm	400mm	
Blueberry	Supplied by YMCA	1524mm - 1828mm	300mm - 360mm	
Raspberry	5	2100mm - 2700mm	608mm - 814mm	
Strawberry	Supplied by YMCA	150mm - 200mm	914mm - 1219mm	
Vegetables	Number	Height	Width	
Bell Peppers	Supplied by YMCA	914mm - 1088mm	381mm - 457mm	
Beetroot		500mm	25mm - 27mm	
Broad Beans		914mm - 1371mm	750mm - 1000mm	
Cabbage		304mm - 355mm	457mm - 608mm	
Garlic		608mm	152mm	
Onions		381mm - 814mm	100mm - 610mm	
		608mm - 814mm		
Peas		Climbing Peas (1828mm - 2438mm)	152mm - 254mm	
Potatoes		1000mm	152mm	
Radishes		152mm - 457mm	78mm - 358mm	
Runner Beans (Climbing)		2000mm - 3000mm	750mm	
Salad Leaves		80mm - 100mm	152mm - 457mm	
Spring Onions		150mm	304mm - 608mm	
Tomatoes		914mm - 1219mm Indeterminate (1628mm)	608mm - 914mm	
Trees	Number	Height	Width	
Cherry Blossom	2	4572mm - 9144mm		
Herbaceous	Number	Height	Width	
Calamint	84	153mm - 305mm	254mm - 305mm	
Centaurea Montana	40	300mm - 700mm	305mm - 458mm	
Evergreen	137	1000mm - 2000mm	6086mm - 8144mm	
Hellebore	208	305mm	610mm	
Michaelmas Daisies	210	200mm - 1400mm	300mm - 800mm	
Purple Clematis	24	750mm - 1500mm	1000mm	
Pink Clematis	45	750mm - 1500mm	1000mm	
Sunflower	12	305mm - 4572mm	45mm 105mm (The entire Head)	
Shrub	Number	Height	Width	
Berberis Thunbergii Atropurpurea	15	300mm - 1800mm	300mm - 1800mm	
Heather	24	610mm	610mm - 815mm	
Climbers	Number	Height	Width	
Clematis	92	3000mm	915mm - 1220mm	
Hedge	Number	Height	Width	
Photania Red Robyn Hedge	94	762mm - 1220mm	3000mm	
Etc				
Grass				

BEES AND FLOWERS

Where to keep Bee's?

(If these suggestions are followed it can increase the productivity of a bee colony)

- Hive should face south or southeast
- Have direct morning sun and afternoon shade
- Be protected from high winds
- Should sit on level dry firm ground
- Should have a nearby water resource
- Should avoid putting them too close to a door as in the summer months some bees with inevitably come inside the building
- Should avoid placing against a building as limits movement and flexibility for beekeeper
- If a hive is too near outdoor furniture, you may find droppings on your furniture
- Set back requirements for the local area should be checked before placing them too near to a property line

Bee friendly Winter plants

(provide food for late flying and early emerging winter bees):

- Crocus
- Hellebore
- Winter Heather

Bee friendly Spring plants (provide food for bumble bees and solitary bees):

- Aubretia
- Bugle
- Spotted Dead Nettle
- Lungwort
- Snakes Head Fritillary

Bee friendly Summer plants (provide food for all wild bees):

- Allium
- Borage
- Catmint
- Cirsium Rivulare
- Foxglove
- Most Herbs

Bee friendly Autumn plants (a source of nectar well into the autumn):

- Bugbane
- Caryopteris
- Dahlias
- Ivy

What flowers do honey Bee's like?

(Flowers and shrubs which are full of pollen and nectar. Pollen feeds the brood and nectar is turned in honey which can feed the brood over the colony months) Bee's are most attracted to purple and blue flowers.

- Sunflowers
- Comfrey
- Salix/Willows
- Catmint
- Hellebores
- Spring Blossom
- Michaelmas Daisies
- Heathers
- Wall flower
- Centaurea



Information Sources:
<https://naturalapiary.co.uk/blogs/news/91397249-where-will-you-put-your-hive>
<https://www.rspb.org.uk/get-involved/activities/nature-on-your-doorstep/garden-activities/growflowersthatbeeslove/>

VEGETABLE GARDENS

EASY TO GROW VEGETABLES

Type: Salad Leaves
How to plant: Plant seeds in pots
Time to Grow: Sow throughout summer and harvest three weeks later. Plants produce leaves until late autumn.
Care: Keep well-watered cut leaves when required

Type: Radishes
How to plant: Sow directly into the ground.
Time to Grow: Sow four weeks after last frost, and throughout summer, harvest four weeks later.
Care: Keep watered

Type: Potatoes
How to plant: Grow in potato bags, bins, or directly into the ground
Time to Grow: Sow late February/march and harvest July to September
Care: Cover shoots with more compost when they begin to come up. Keep well-watered and rummage out your spuds when foliage dies back.

Type: Peas
How to plant: Support with canes and chicken wire
Time to Grow: Sow March to June and harvest after two to three months.
Care: The more you pick the ripe pods the more the plant will produce.

Type: Spring Onions
How to plant: Easy to grow in pots or in the ground
Time to Grow: Sow March to July harvest after eight weeks.
Care: Planting with mint will deter onion fly.

Type: Broad Beans
How to plant: Sow into small pots before planting out, or sow directly into the ground.

Time to Grow: Sow November to March and harvest June onwards
Care: Pinch out the top few leaves when they reach about 3’ tall to encourage the plant to produce more pods

Type: Runner Beans
How to plant: Sow into small pots before planting out, or sow directly into the ground. Train them onto runners or plant support frames
Time to Grow: Sow April to July and harvest 2 months afterwards
Care: Keep well-watered and when pods are ripe keep picking them and the plant will produce more pods. Regular picking is essential

Type: Onions and Garlic
How to plant: Plant into well drained soil, lift when the foliage starts to grow back and dry in sun light before storing in cool, dry well-ventilated place.
Time to Grow: Sow spring and harvest late autumn
Care: Virtually maintenance free, plant the onion bulb or single garlic cloves on well drained soil and leave them to grow. When the foliage yellows and dies back you can lift them.

Type: Tomatoes
How to plant: Sow in bags, pots or hanging baskets
Time to Grow: Sow February to April and harvest July to October
Care: Will need plant food and water to grow.

Type: Beetroot
How to plant: Sow directly into moist soil and thin seedlings to about 5cm apart.
Time to Grow: Sow March to July and harvest May to September
Care: Will need plant food and water to grow.

HERBS

Type: Basil
How to plant: Planted into pots
Time to Grow: Sow in late spring and harvest Summer through Autumn
Care: Prefers a light and drained soil (where drainage is an issue plant in raised beds or pots, most herbs need neutral to alkaline soil) Can only be grown outside in the summer months and needs to come inside in the winter, unless a green house is available. Needs a fertile soil with lots of warmth and light.

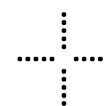
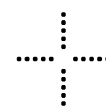
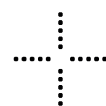
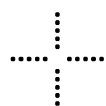
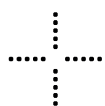
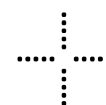
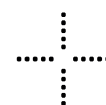
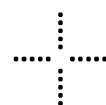
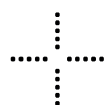
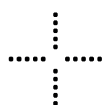
Type: Mint
How to plant: Either grow in a bottomless bucket set in the soil as can be invasive, or grow in pots.
Time to Grow: Sow in late spring and harvest Summer through Autumn
Care: Prefers a light and moist soil, lots of sunlight and fertile soil.

Information Sources:
<https://www.thompson-morgan.com/top-10-easy-to-grow-vegetables>
<https://www.countryliving.com/uk/homes-interiors/gardens/advice/a760/best-herbs-to-grow-in-your-garden/>

Type: Rosemary
How to plant: Planted into pots
Time to Grow: Sow in late spring and harvest Summer through Autumn
Care: Prefers a light and drained soil in a sunny spot, it is drought intolerant and pest resistant.

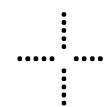
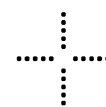
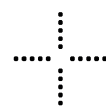
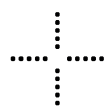
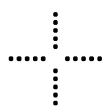
Type: Coriander
How to plant: Planted into pots
Time to Grow: Sow in late spring and harvest Summer through Autumn
Care: Fertile soil in sunny portion, partial shade is preferable as shade helps prevent premature setting of the seeds.





make create place

2022



CONTACT

Kevin Goldsmith
E: kevin.goldsmith@willandpartners.com
M: 07970051722

Will Poole-Wilson
E: will@willandpartners.com
M: 07976807091

Anoushka Pacquette
E: anoushka.pacquette@willandpartners.com
M: 07504105887

