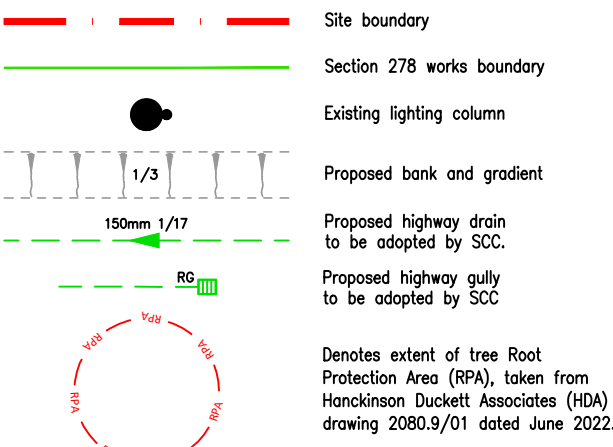
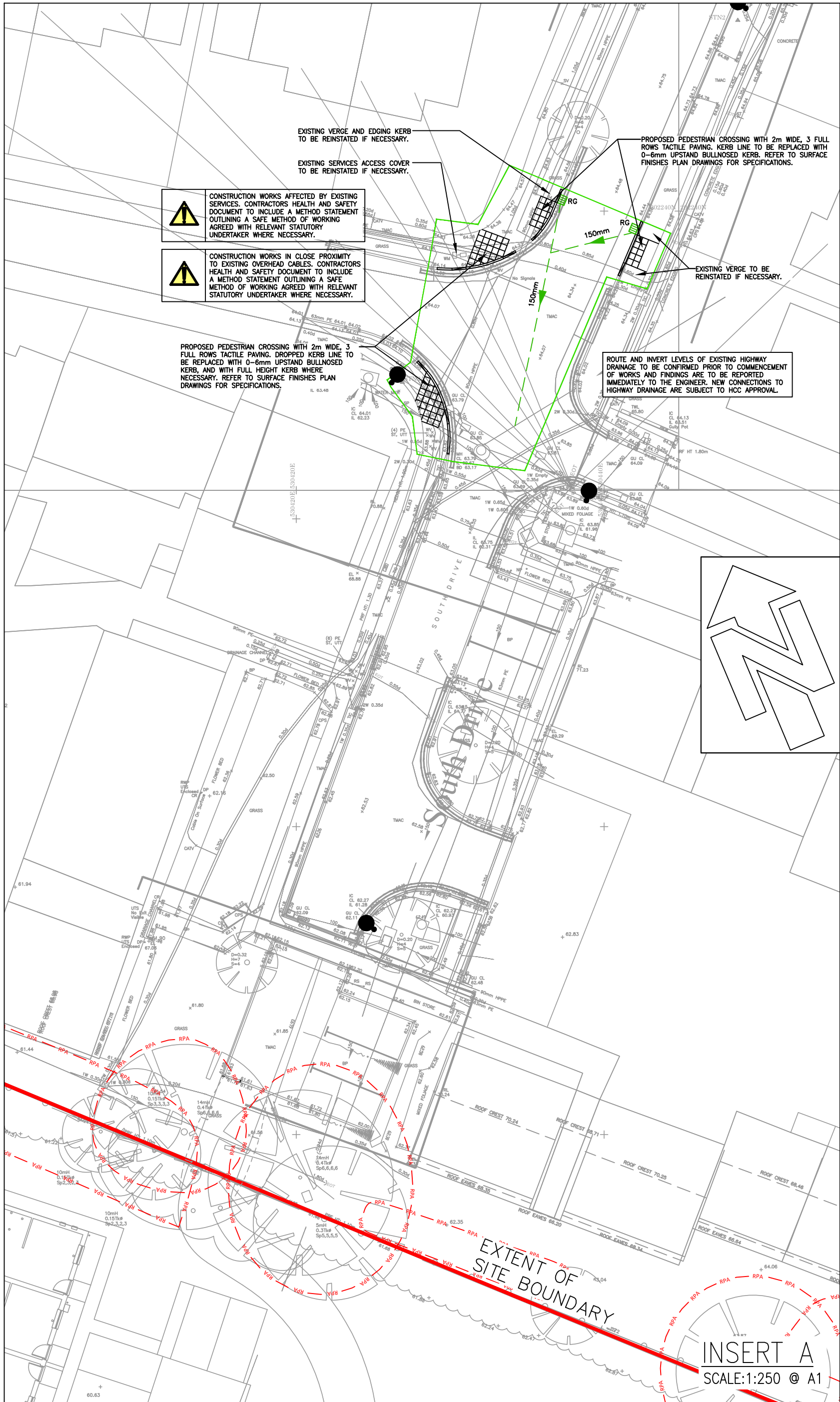
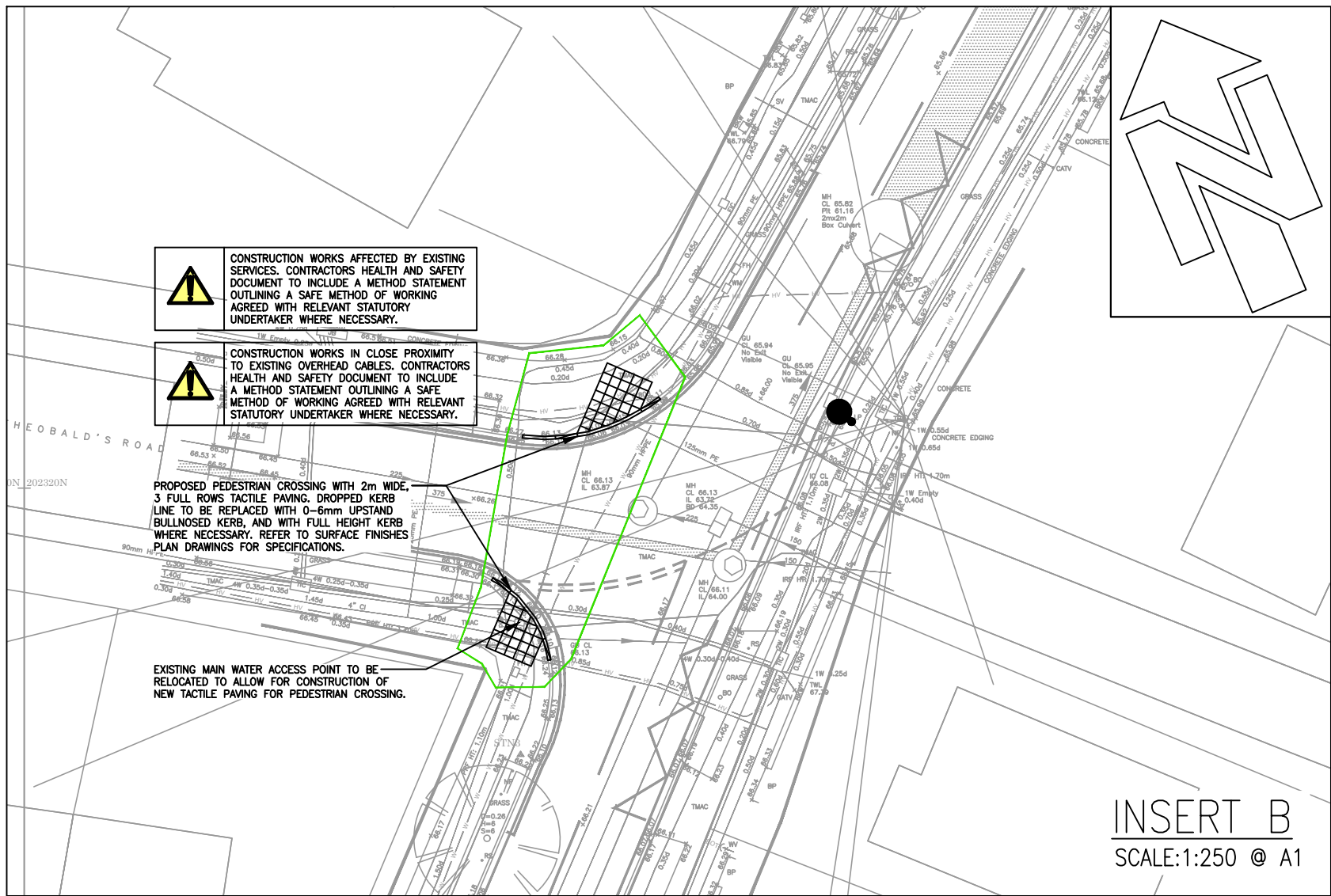
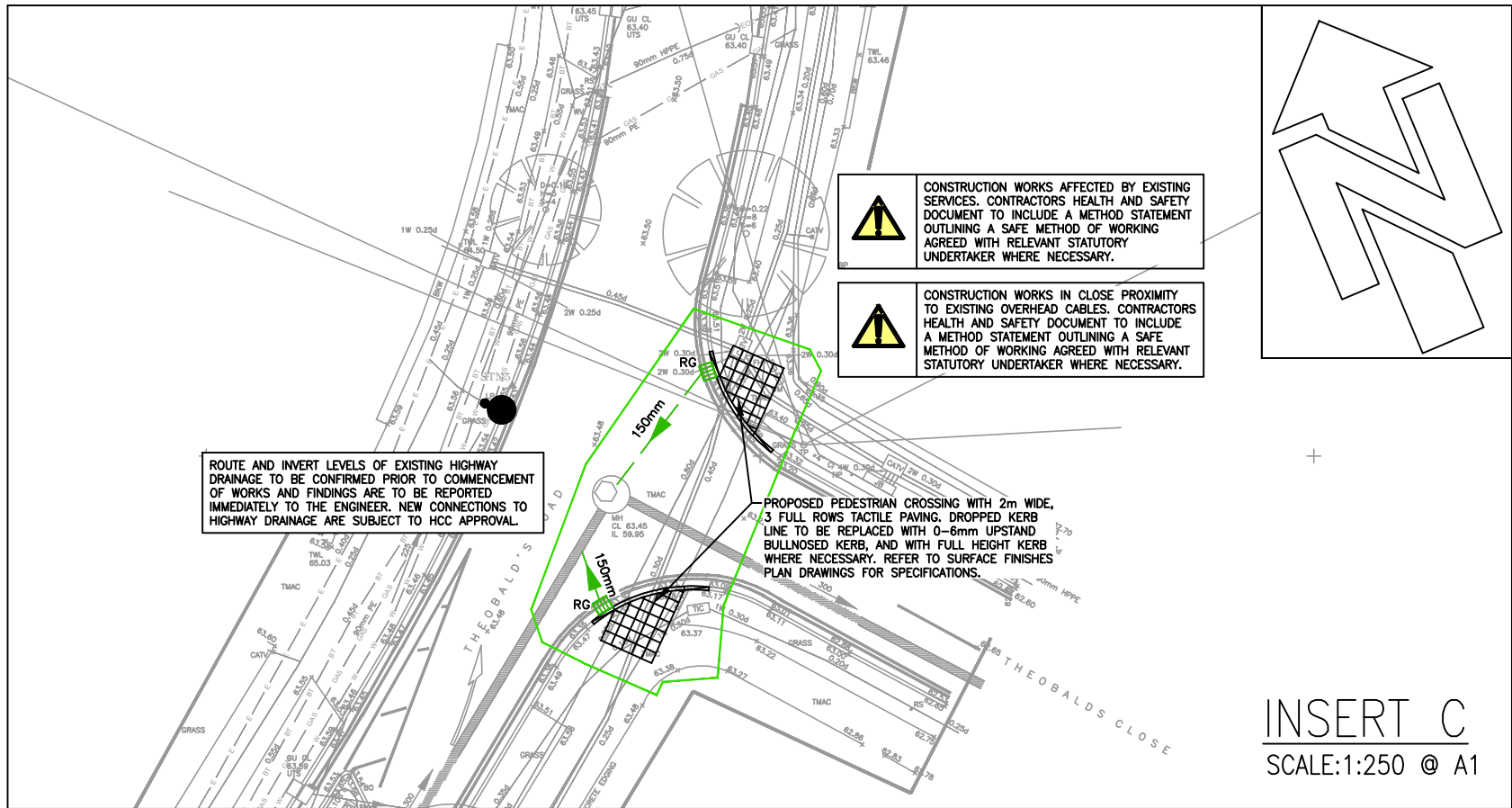
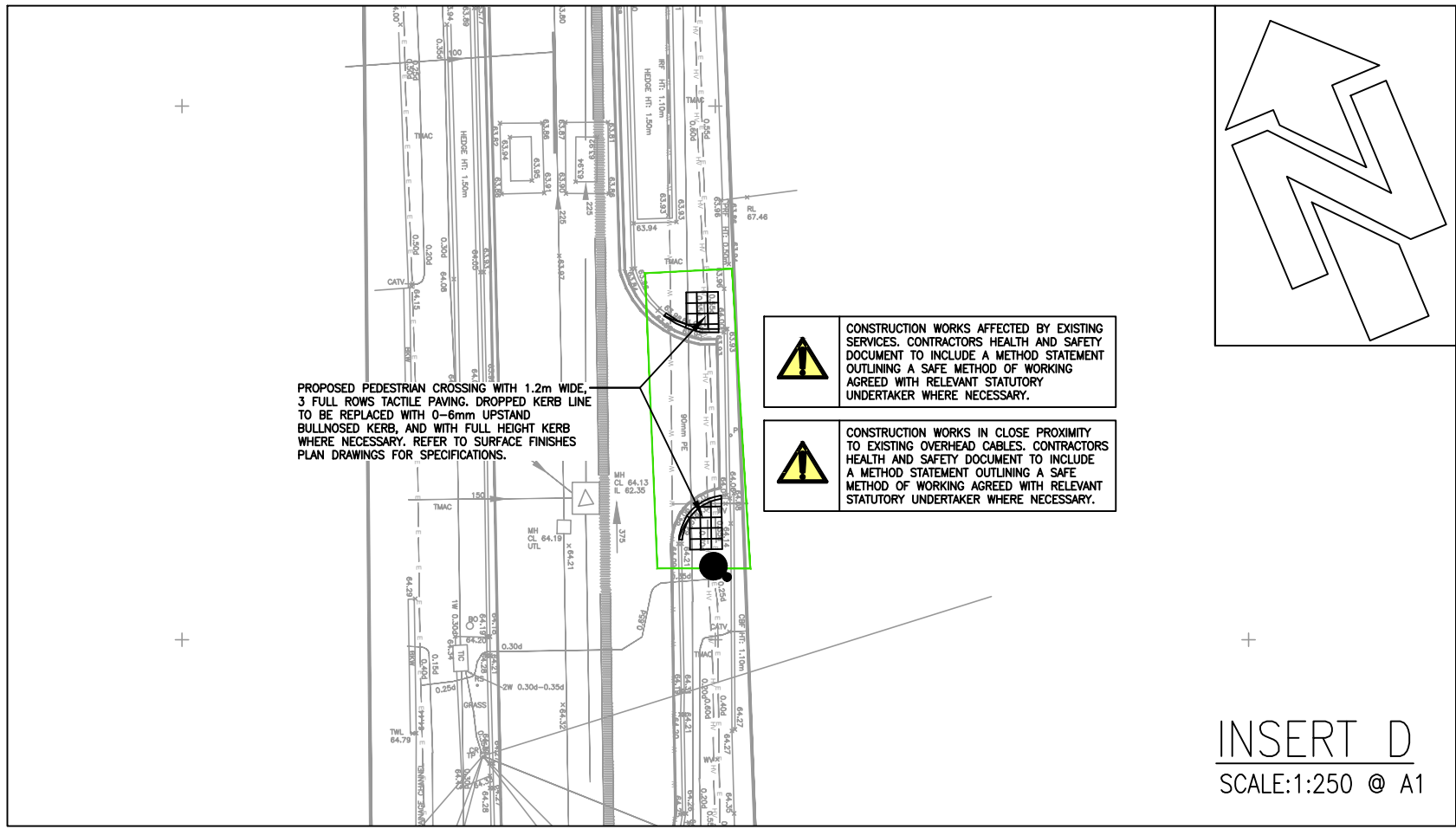


S278 KEY LEGEND



ENGINEERING NOTES

- This drawing is to be read in conjunction with all relevant Architects, Engineers and Subcontractors drawings and details.
- This drawing is based on topographical survey by Cloud 10 Ltd. Drawing Number 1005 - U (1 to 14) Dated November 2022
- All levels relate to levels given on survey drawing.
- For lighting, service supplies & ducting requirements, refer to M&E drawings.
- All works to be carried out in accordance with sewer sector guidance Appendix C, "Design and Construction Guidance for foul and surface water sewers", BS EN 752 "Drain and sewer systems outside buildings" and the current edition of The Building Regulations "Approved document H".
- New drainage connections are to be made with appropriate lengths of rocker pipes & couplings.
- All manhole chamber covers to be installed parallel to final kerbs, edgings, paving joints or building lines as appropriate.
- Concrete manholes shall comply with BS EN 1917 and BS 5911-3.
- Plastic chambers shall comply with BS 7158.
- All adoptable surface water pipework up to 225mm in diameter to be Kitemark certified Vitrified Clay (VC) with flexible spigot and socket joints and shall comply with the requirements of BS EN 285.
- On completion of development all drainage shall be jet cleaned and CCTV surveyed.
- Redundant drainage & services marked to be removed are to be dug out with chambers demolished & void filled with Type 1 material to clause 803 & 805.
- All road gully connections to be minimum 150mm diameter solid PVC-U pipework to BS EN 1401-1/BS4660 and laid at a minimum gradient of 1 in 150.
- All existing services shown are based on topographical survey by Cloud 10 Ltd. Location of all services in close proximity to works should be confirmed by means of trial pits under supervision of statutory undertaker & in accordance with HSE document "Avoiding Danger from Underground Services".



B	S278 BOUNDARY UPDATED	AM	03.02.23
A	CYCLEPATH LINK REMOVED	AM	06.01.23
-	INITIAL ISSUE	EL	-
MK	REVISION	BY	DATE

DRAWING STATUS
APPROVAL

DRAWING TITLE
**S278 THEOBALD'S ROAD -
WORKS PLAN**

PROJECT
**NORTHAW ROAD EAST,
CUFFLEY**

simpson tws Unit B10 Elmbridge Court Business Park Gloucester, GL3 1JZ T: 01452 309 727 E: mail@simpsoneng.com W: www.simpsoneng.com			
London, Henley-on Thames and Gloucester			
Drawn EL	Chkd AU	Scales 1:250 UNO	Date FEB 2023
Purpose of Issue FOR APPROVAL			
Project Number P22-772	Drawing Number 70	Revision B	