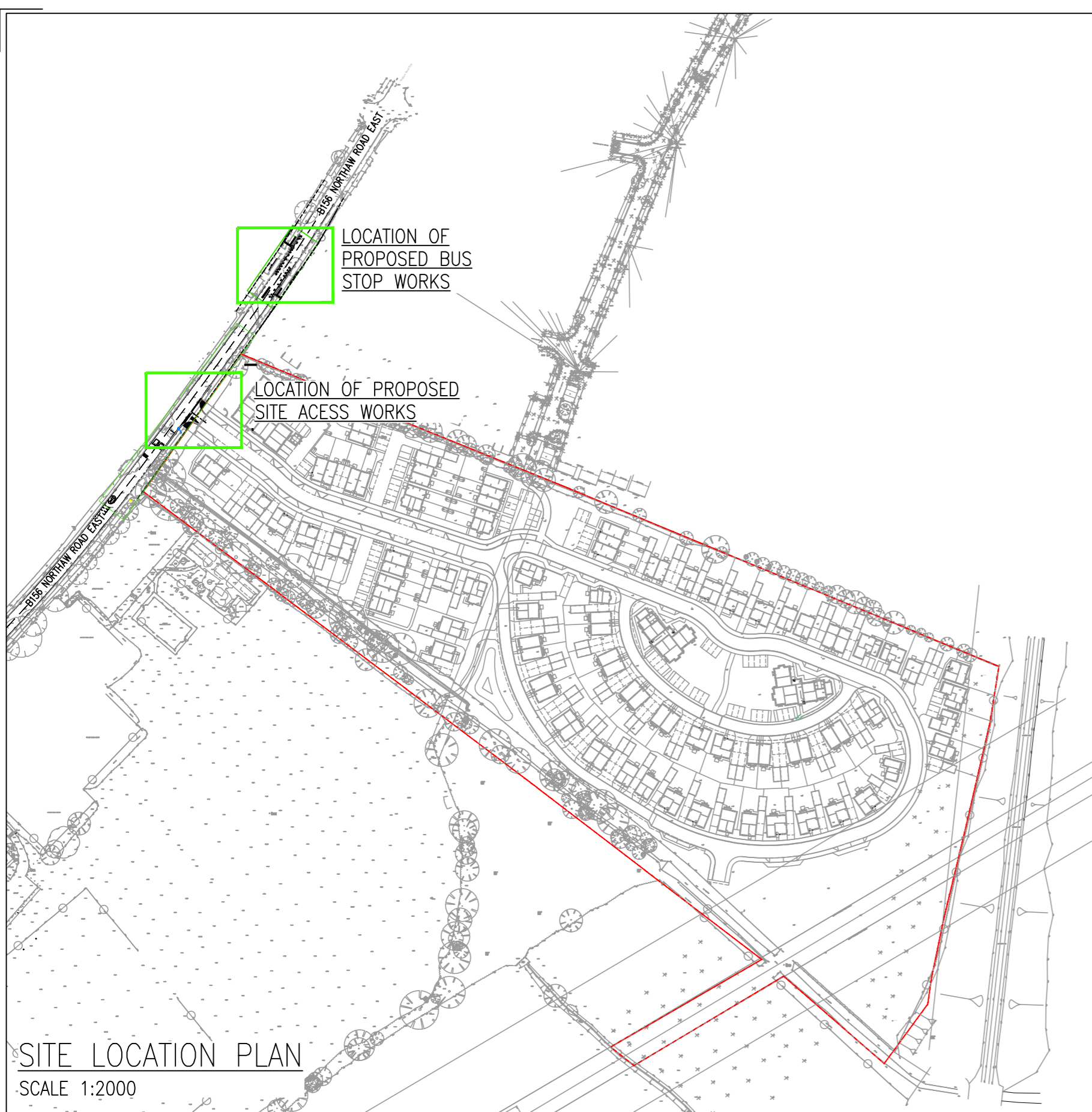
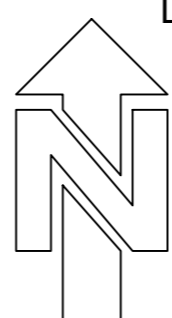


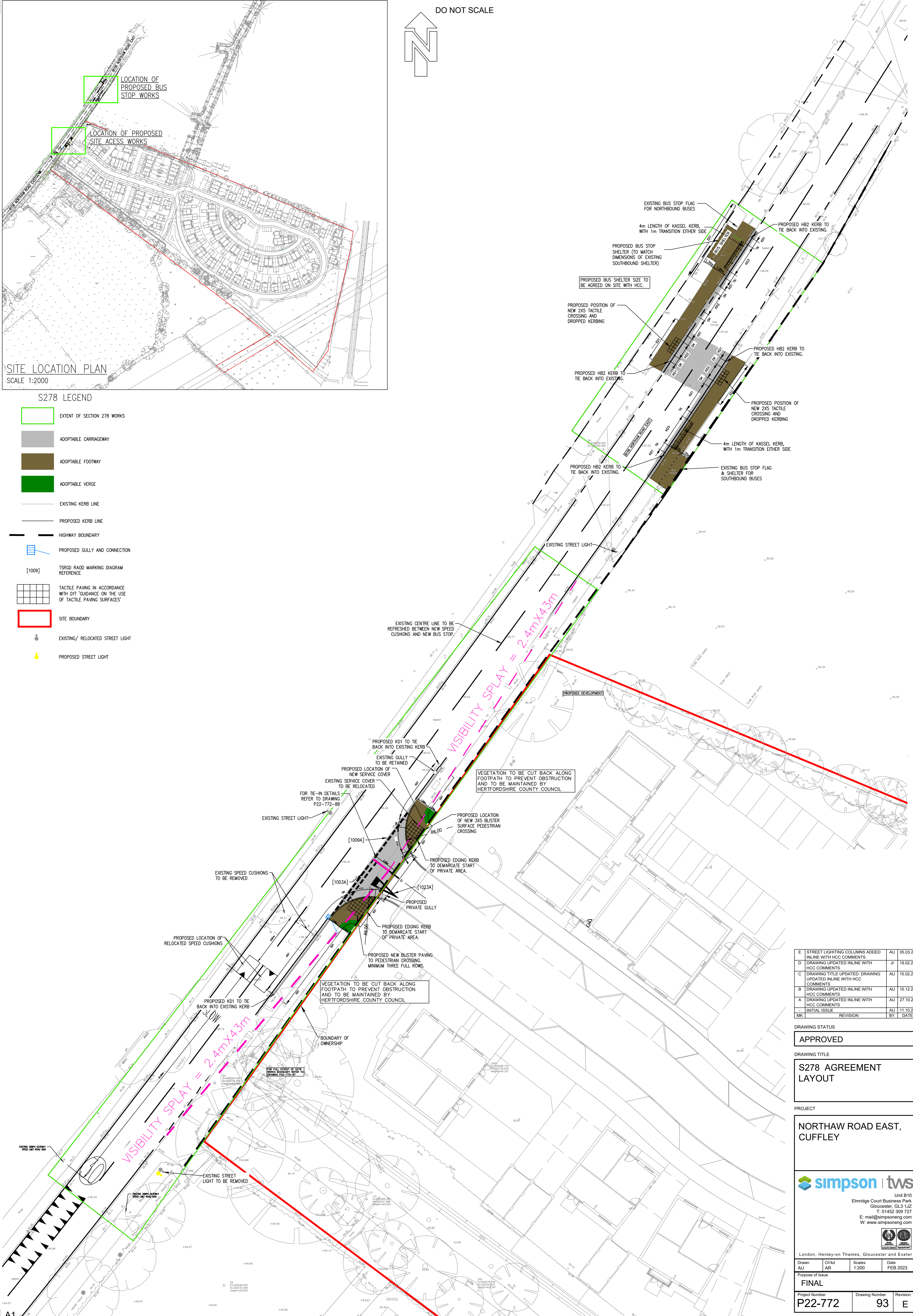
DO NOT SCALE



SITE LOCATION PLAN
SCALE 1:2000

S278 LEGEND

- EXTENT OF SECTION 278 WORKS
- ADAPTABLE CARRIAGEWAY
- ADAPTABLE FOOTWAY
- ADAPTABLE VERGE
- EXISTING KERB LINE
- PROPOSED KERB LINE
- HIGHWAY BOUNDARY
- PROPOSED GULLY AND CONNECTION
- TS/RD ROAD MARKING DIAGRAM REFERENCE
- TACTILE PAVING IN ACCORDANCE WITH DfT 'GUIDANCE ON THE USE OF TACTILE PAVING SURFACES'
- SITE BOUNDARY
- EXISTING/RELOCATED STREET LIGHT
- PROPOSED STREET LIGHT



E	STREET LIGHTING COLUMNS ADDED IN LINE WITH HCC COMMENTS.	AU	05.03.24
D	DRAWING UPDATED IN LINE WITH HCC COMMENTS.	JL	19.02.24
C	DRAWING TITLE UPDATED, DRAWING UPDATED IN LINE WITH HCC COMMENTS.	AU	15.02.24
B	DRAWING UPDATED IN LINE WITH HCC COMMENTS.	AU	15.12.23
A	DRAWING UPDATED IN LINE WITH HCC COMMENTS.	AU	27.10.23
-	INITIAL ISSUE	AU	11.10.23
MK	REVISION	BY	DATE

DRAWING STATUS
APPROVED

DRAWING TITLE
S278 AGREEMENT LAYOUT

PROJECT
NORTHAW ROAD EAST, CUFFLEY

Unit B10
Elmridge Court Business Park
Gloucester, GL3 1JZ
T: 01452 309 727
E: mail@simpsoneng.com
W: www.simpsoneng.com

London, Henley-on-Thames, Gloucester and Exeter			
Drawn	Chkd	Scale	Date
AU	AR	1:200	FEB 2023
Purpose of Issue			
FINAL			

Project Number	Drawing Number	Revision
P22-772	93	E