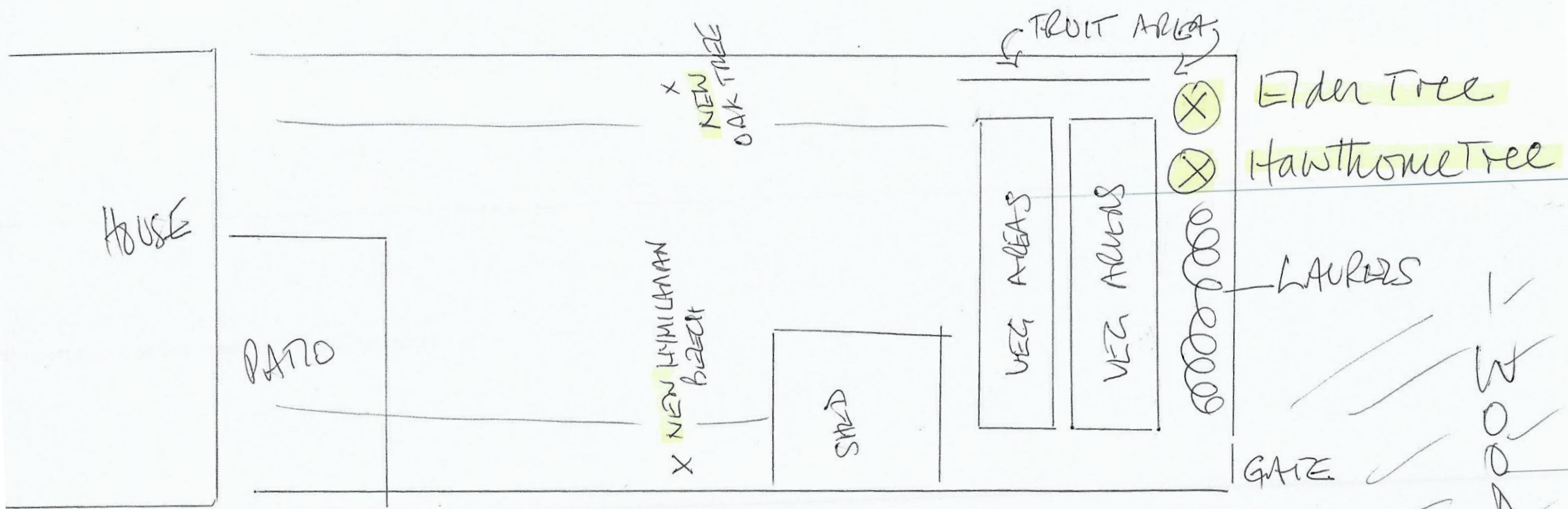


BACK GARDEN
 24 WALDEN ROAD AL8 7PF.



DESCRIPTION OF WORKS

- ① REMOVE STORM DAMAGE BRANCH OF HAWTHORNE TREE
- ② 'CROWN' 30% OF CANOPY OF BOTH HAWTHORNE & ELDER TREES TO PROMOTE HEALTHY GROWTH
- ③ REMOVE IVY FROM TRUNK OF HAWTHORNE.

