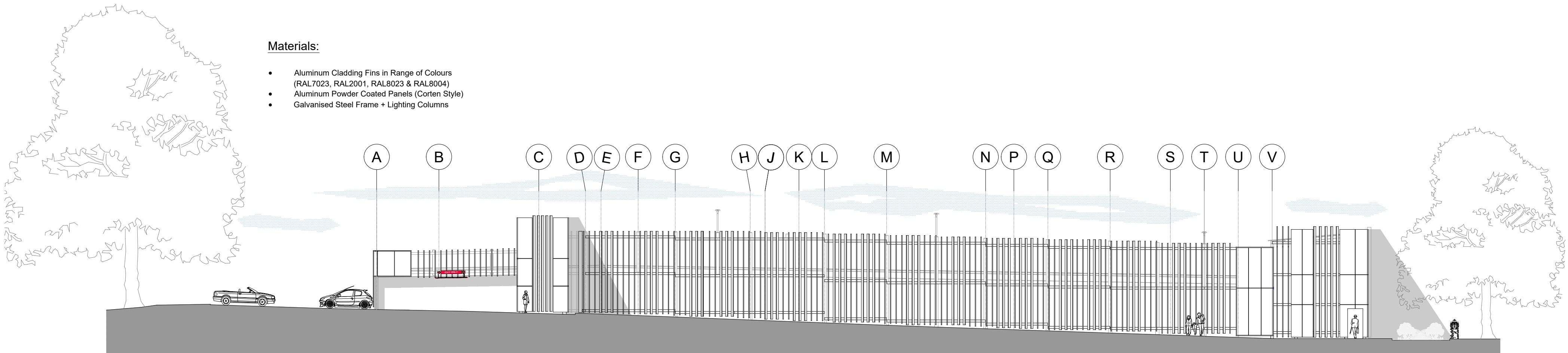


NOTES:
Do not scale from this drawing.
All dimensions to be checked on site by the contractor.
Report all drawing errors, omissions and discrepancies to the Bourne.
This document may be issued in an uncontrolled CAD format to enable others to use it as background information to make alterations and/or additions. In that instance the file will be accompanied by a PDF version. It is for those making such alterations and additions to ensure that they make use of current background information.
Bourne accepts no liability for any such alterations or additions to the background information or arising out of changes to background information which occur prior to alterations of additions being made.
Note:
FFL = Finished Floor Level
SSL = Structural Slab Level
"+152.000 TOC" = Top of Concrete Level
FGL = Finished Ground Level

Materials:

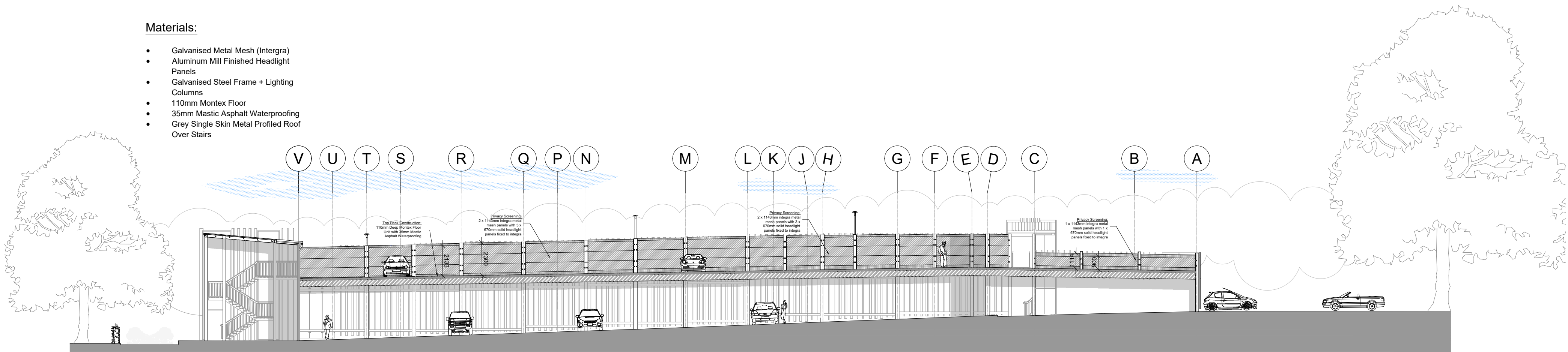
- Aluminum Cladding Fins in Range of Colours (RAL7023, RAL2001, RAL8023 & RAL8004)
- Aluminum Powder Coated Panels (Corten Style)
- Galvanised Steel Frame + Lighting Columns



Elevation (West - External) - 1:200

Materials:

- Galvanised Metal Mesh (Intergra)
- Aluminum Mill Finished Headlight Panels
- Galvanised Steel Frame + Lighting Columns
- 110mm Montex Floor
- 35mm Mastic Asphalt Waterproofing
- Grey Single Skin Metal Profiled Roof Over Stairs



Elevation (West - Internal) - 1:200



Scale = 1 : 200

P01	SWM	Prelim Issue			
REV No.	REV Dtg	REVISION DESCRIPTION		REV DATE	
<div><div></div><div>bourne</div><div>PARKING</div></div>					
T	01423 888000	W	www.bournegroup.co.uk	E	info.bpl@bournegroup.co.uk
CLIENT	Welwyn & Hatfield Council				
PROJECT	Welwyn Campus West				
SCALE: 1:200					@A1
DATE:	26/07/2022	DRAWN BY:	SWM	CHKD:	APPR: JS
DRAWING TITLE					
Internal & External West Boundary Elevation					
Bourne Contract No.:		6409	Bourne Dtg No.:		0022
Drawing Reference No.:		6409-BPL-022-ELEV			P01