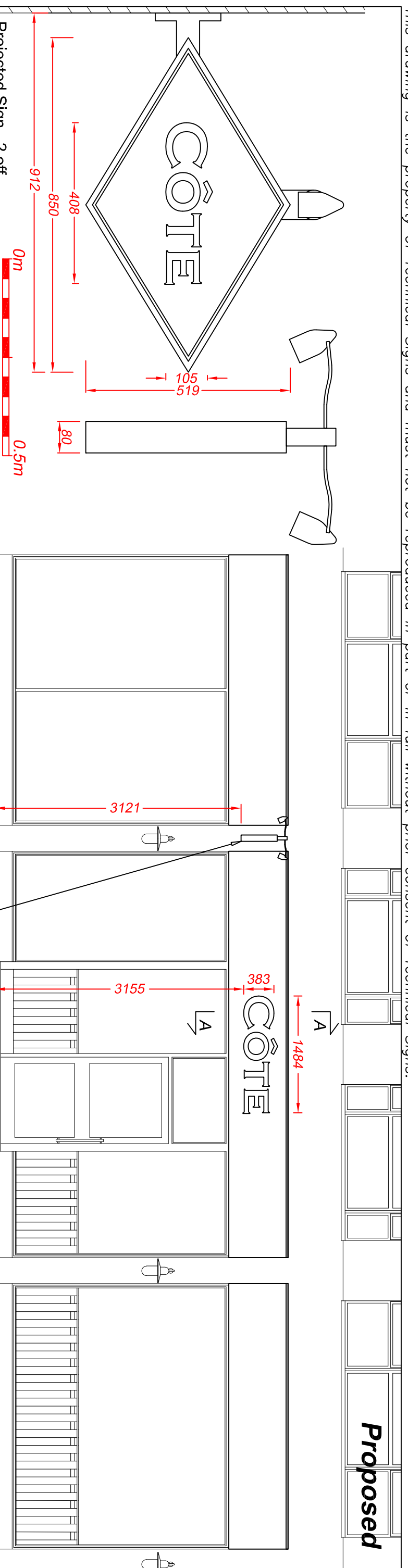


This drawing is the property of Technical Signs and must not be reproduced in part or in full without prior consent of Technical Signs.



**Proposed**

Projected Sign - 2 off

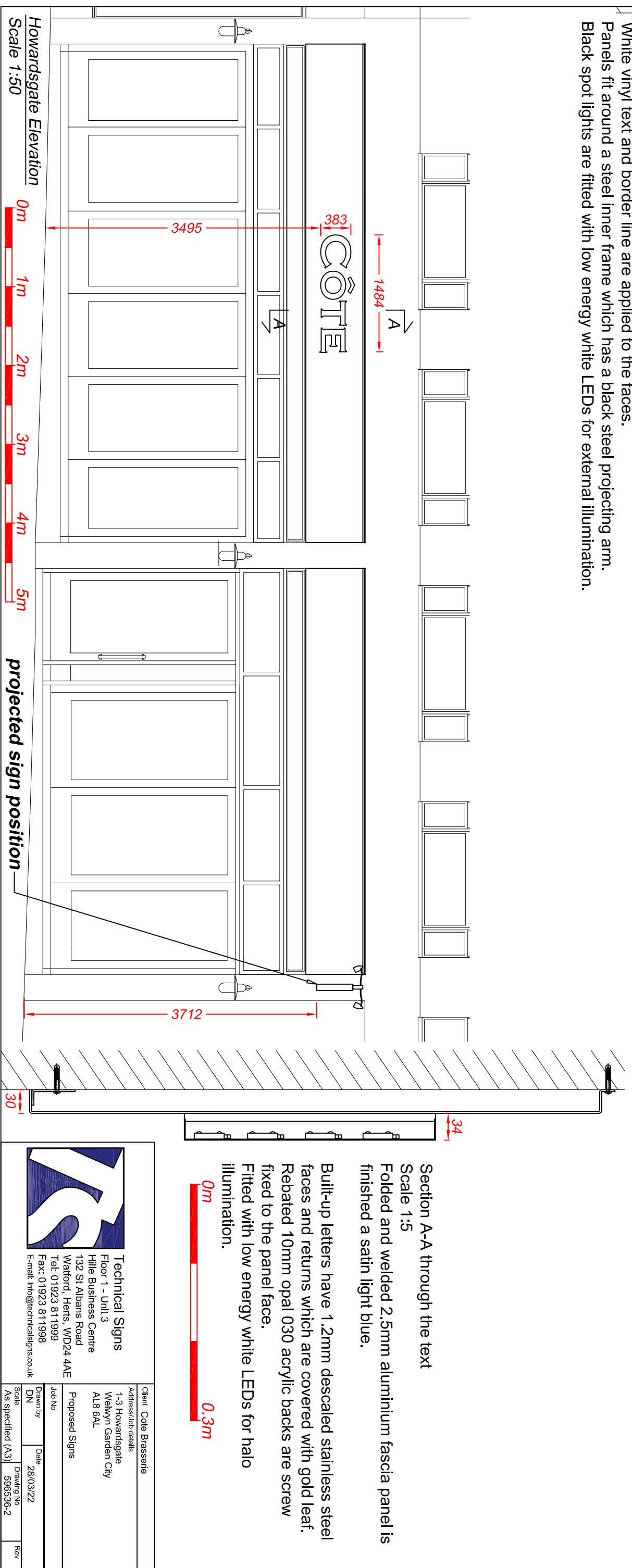
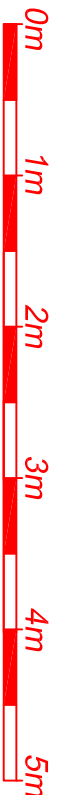
Scale 1:10

Built-up 2.5mm aluminium panels are finished a satin dark blue. White vinyl text and border line are applied to the faces. Panels fit around a steel inner frame which has a black steel projecting arm. Black spot lights are fitted with low energy white LEDs for external illumination.

Parkway Elevation

Scale 1:50

projected sign position



Howardsgate Elevation

Scale 1:50



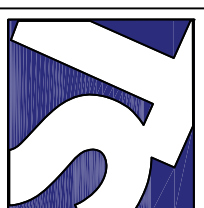
projected sign position

Section A-A through the text

Scale 1:5

Folded and welded 2.5mm aluminium fascia panel is finished a satin light blue.

Built-up letters have 1.2mm descaled stainless steel faces and returns which are covered with gold leaf. Rebated 10mm opal 030 acrylic backs are screw fixed to the panel face. Fitted with low energy white LEDs for halo illumination.



**Technical Signs**  
 Floor 1 - Unit 3  
 Hille Business Centre  
 132 St Albans Road  
 Watford, Herts, WD24 4AE  
 Tel: 01923 811999  
 Fax: 01923 811998  
 Email: info@technicalsigns.co.uk

Client: Cole Brasserie  
 Address/Job details:  
 1-3 Howardsgate  
 Welwyn Garden City  
 AL8 6AL

Proposed Signs

|          |                   |            |          |
|----------|-------------------|------------|----------|
| Drawn by | DN                | Date       | 28/03/22 |
| Scale    | As specified (A3) | Drawing No | 596536-2 |
| Job No   |                   | Rev        |          |