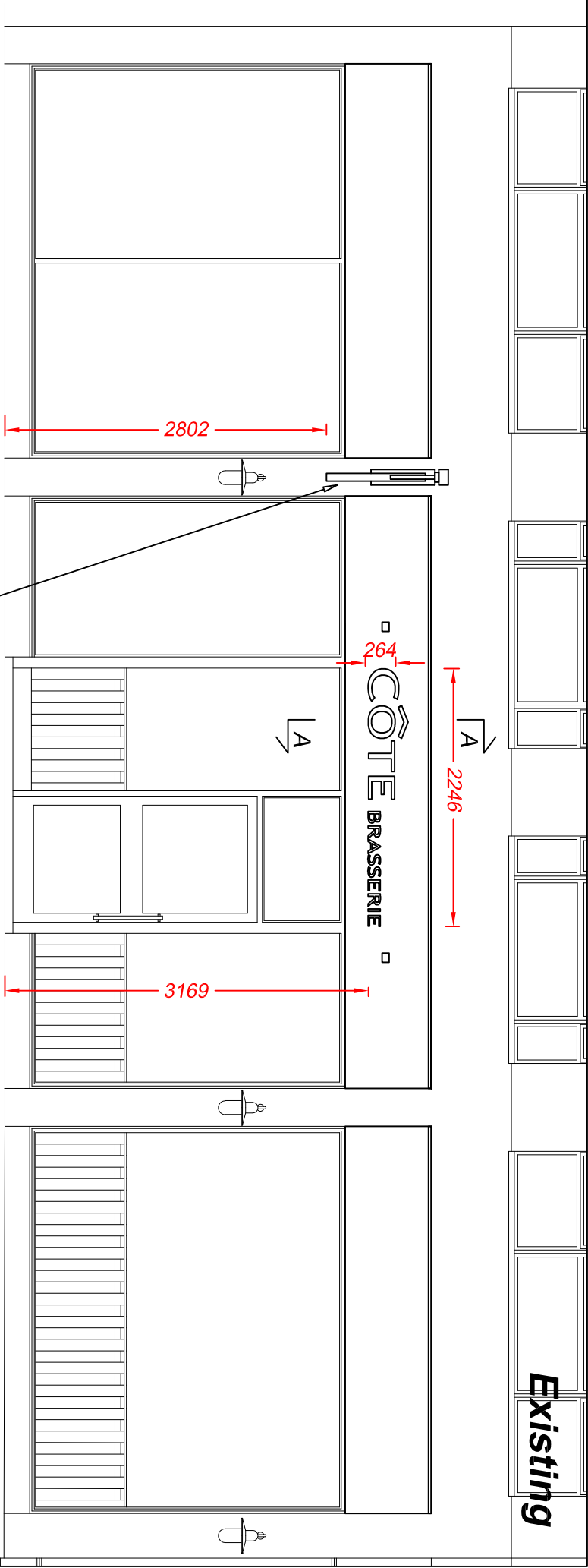
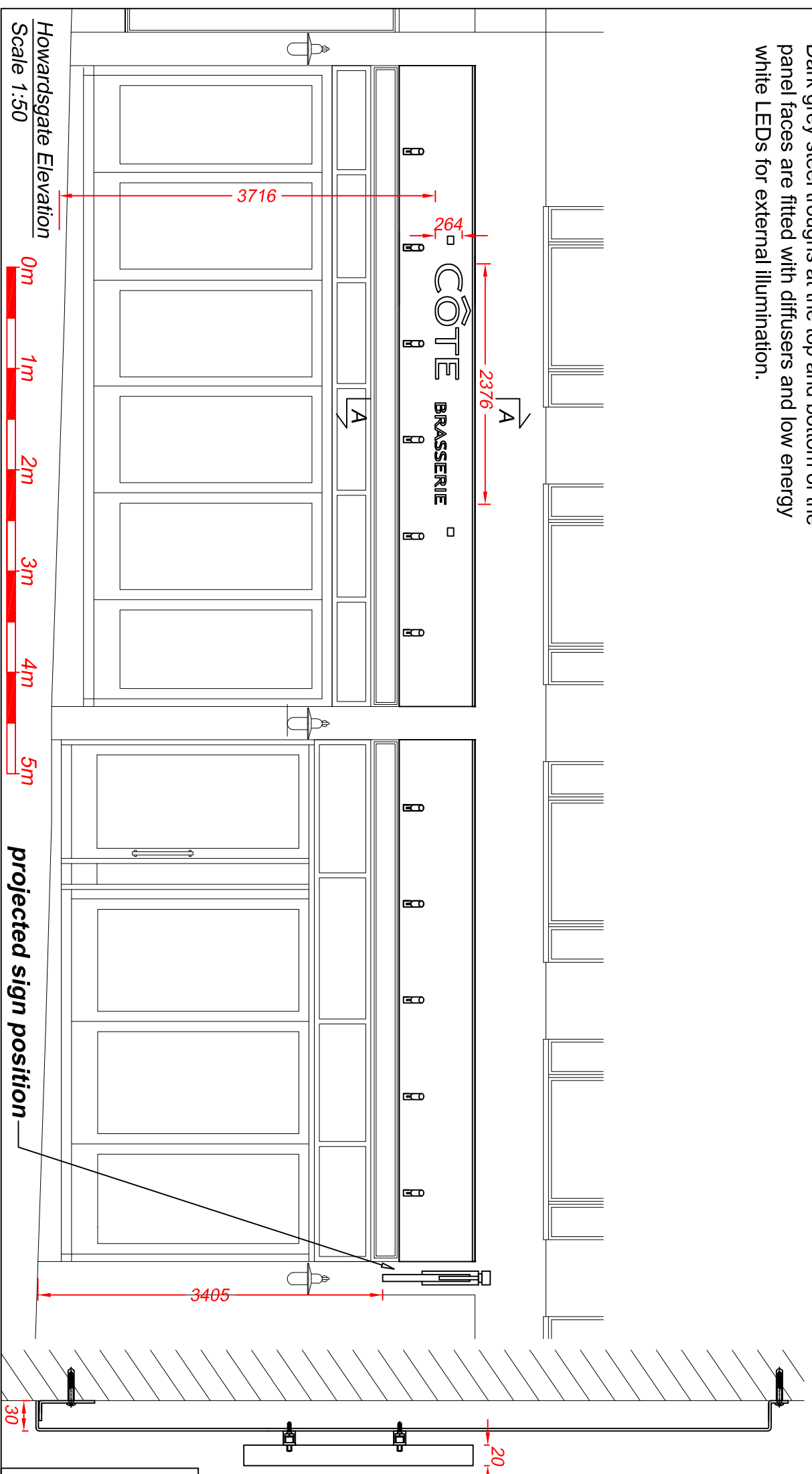


Folded and welded 2.5mm aluminium panels are finished a dark grey colour and hangs from a black steel projecting arm.
White vinyl text is applied to the panel faces.
Sign hangs from a black steel projecting arm.
Dark grey steel troughs at the top and bottom of the panel faces are fitted with diffusers and low energy white LEDs for external illumination.



projected sign position



projected sign position

Section A-A through the text
Scale 1:5
Folded and welded 2.5mm aluminium fascia panel is finished a dark grey colour.
Flat cut 20mm Trovidur letters are finished white and are fixed to the panel face on locators. Black spot lights are fitted with low energy white LEDs for external illumination.



Technical Signs
Floor 1 - Unit 3
Hille Business Centre
132 St Albans Road
Watford, Herts, WD24 4AE
Tel: 01923 811999
Fax: 01923 811998
E-mail: info@technicalsigns.co.uk

Client: Cole Brasserie	
Address/Job details 1-3 Howardsgate Welwyn Garden City AL8 6AL	
Existing Signs	
Job No	
Drawn by DN	Date 28/03/22
Scale As specified (A3)	Drawing No 596536-1
	Rev