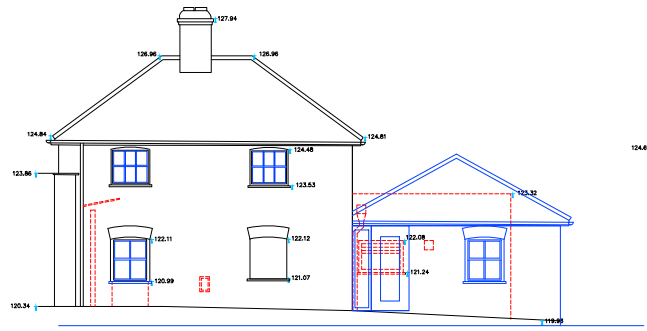
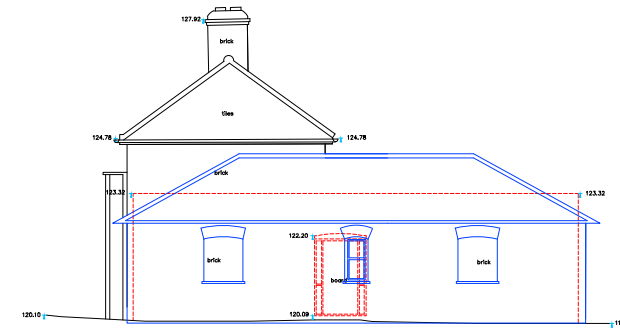


New Timber Casement Windows Shown In Blue

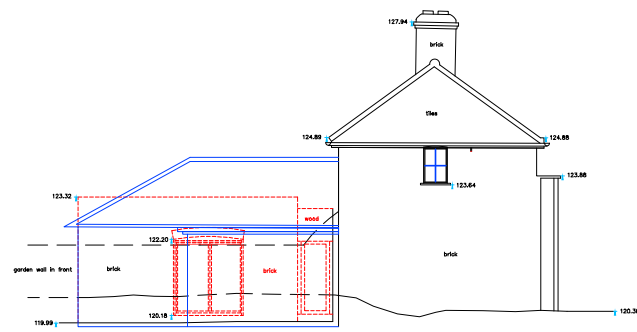
NB: Style agreed with Tim Murphy, 2 pane casement windows not Georgian.



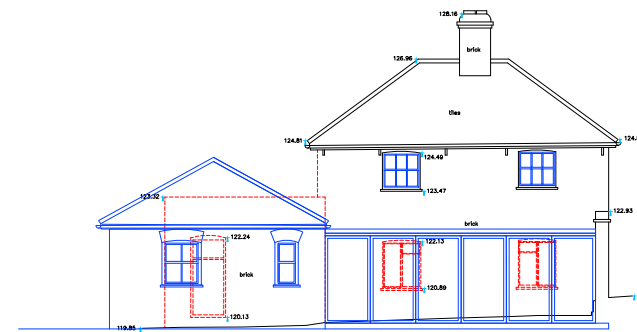
DATUM 115.00metres
ELEVATION oak4
PROPOSED EAST ELEVATION, OAK COTTAGE
1:200



DATUM 115.00metres
ELEVATION oak3
PROPOSED NORTH ELEVATION, OAK COTTAGE
1:200



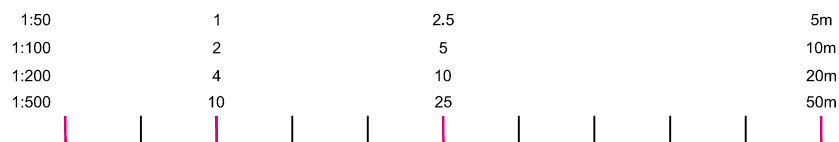
DATUM 115.00metres
ELEVATION oak1
PROPOSED SOUTH ELEVATION, OAK COTTAGE
1:200



DATUM 115.00metres
ELEVATION oak2
PROPOSED WEST ELEVATION, OAK COTTAGE
1:200

KEY:

- RED DASH LINE: TO BE DEMOLISHED
- BLUE LINE: PROPOSED ALTERATIONS



lm bryant + moore
ARCHITECTS
19-25 Salisbury Square, Old Hatfield, Herts AL9 5BT
Tel: 01707 251428 Fax: 01707 251429 Email: mb@bryantandmoore.co.uk

PROPOSED DEVELOPMENT AT:
Northaw House, Coopers Lane, Potters Bar, Hertfordshire EN6 4PS
DEMOLITION ELEVATIONS, OC **1:200@A3** **MARCH 2018**

DRAWING BASED UPON INFORMATION PROVIDED BY CSL LAND & ARCHITECTURAL SURVEYORS.

16_254_PL35