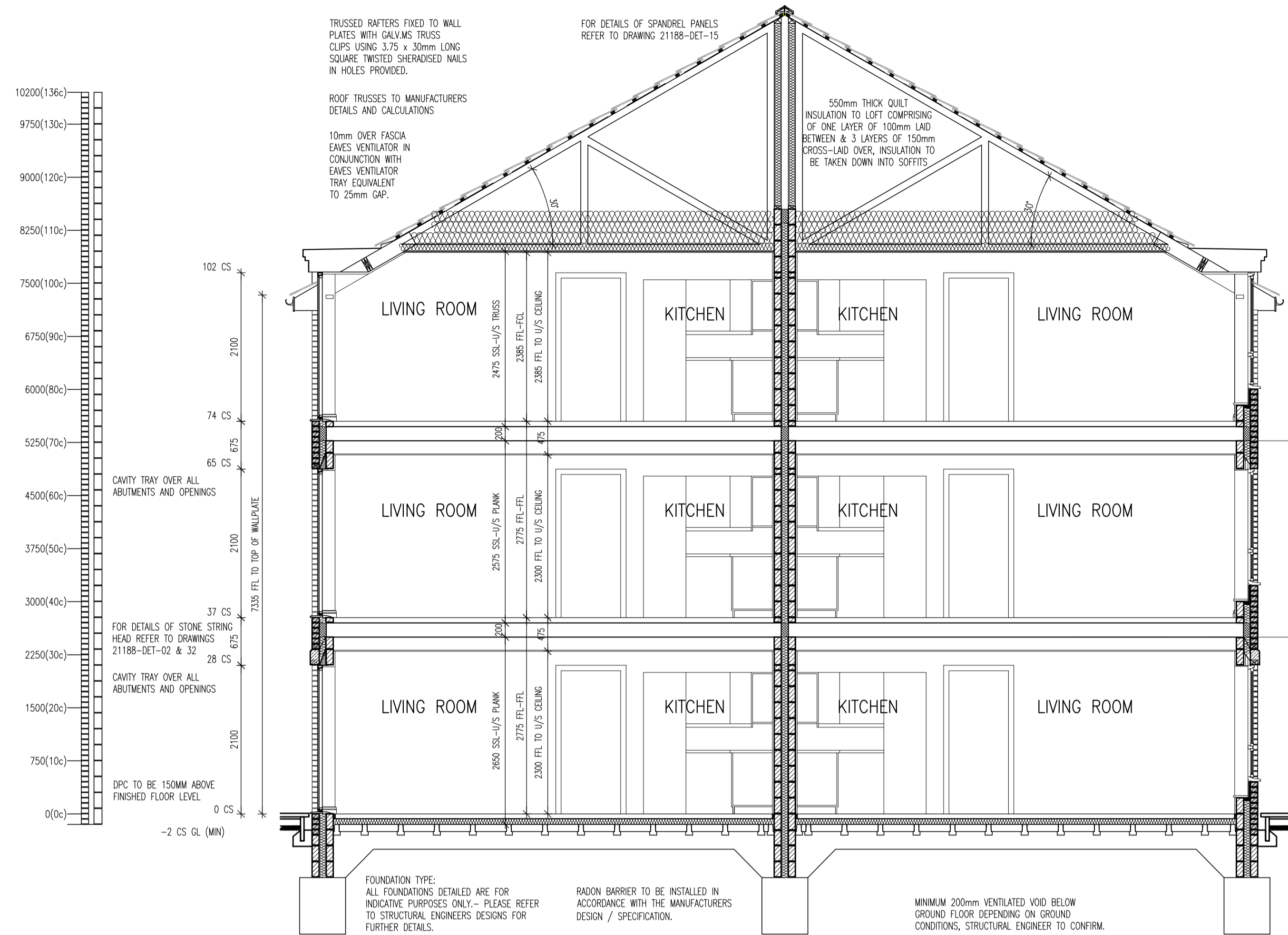
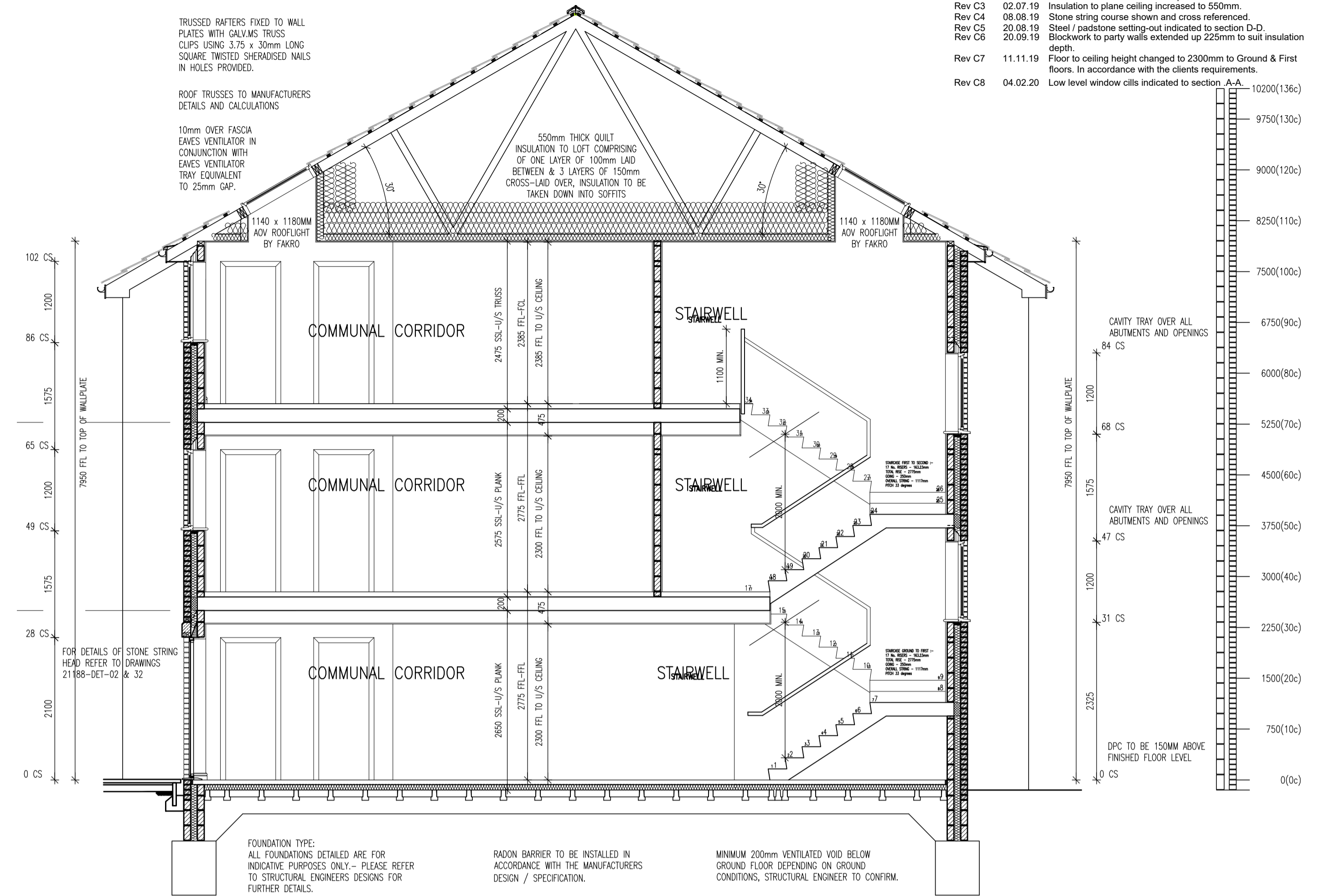


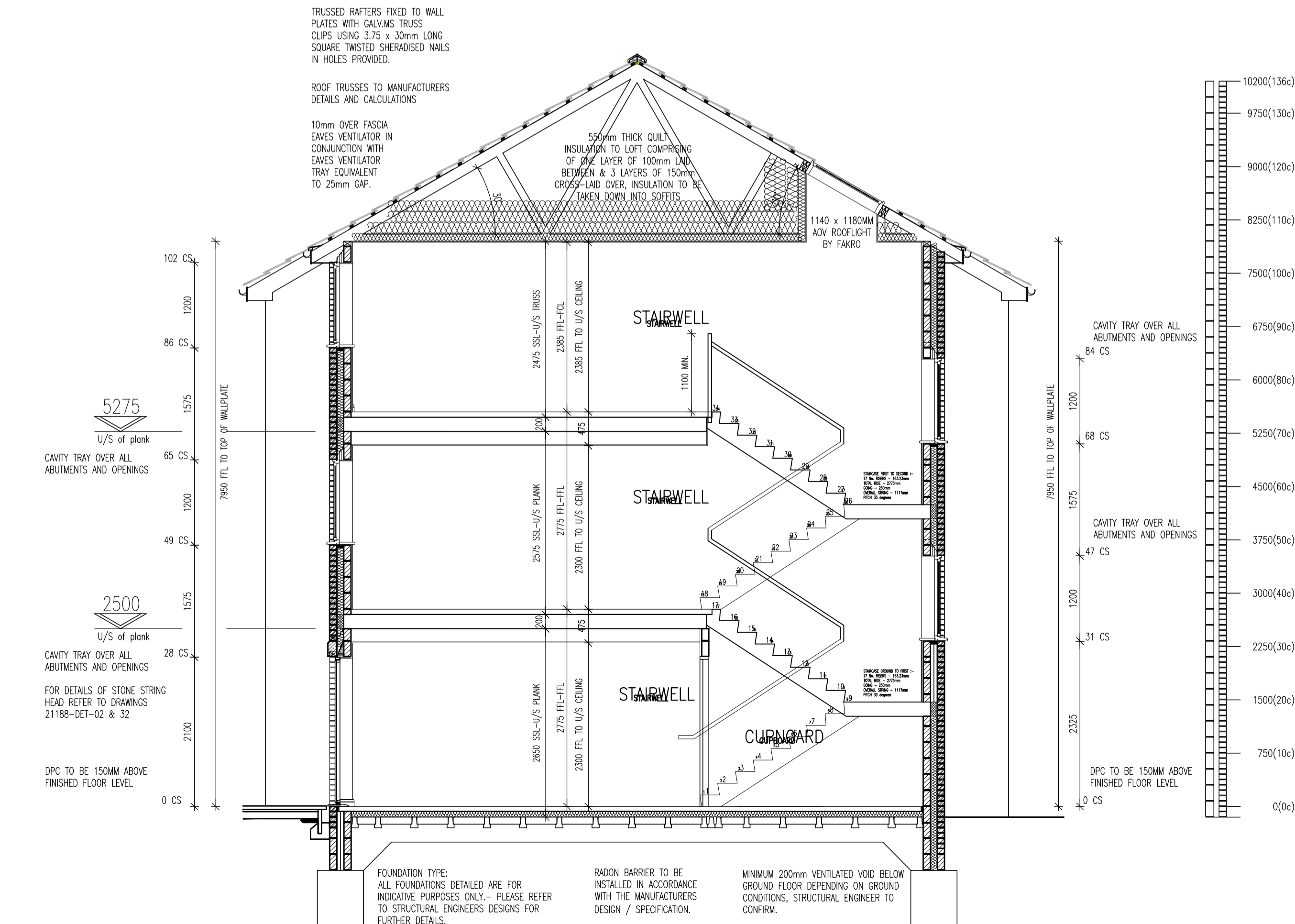
Rev. No.	Date	Amendment	Initial
Rev. C1	07.05.19	Construction Issue.	PJH
Rev. C2	29.05.19	Flat roof construction over bin / cycle store updated. In accordance with the clients requirements.	PJH
Rev. C3	02.07.19	Insulation to plane ceiling increased to 550mm.	GC
Rev. C4	08.08.19	Stone string course shown and cross referenced.	GC
Rev. C5	20.08.19	Steel / padstone setting-out indicated to section D-D.	GC
Rev. C6	20.09.19	Blockwork to party walls extended up 225mm to suit insulation depth.	GC
Rev. C7	11.11.19	Floor to ceiling height changed to 2300mm to Ground & First floors. In accordance with the clients requirements.	PJH
Rev. C8	04.02.20	Low level window cills indicated to section A-A	PJH



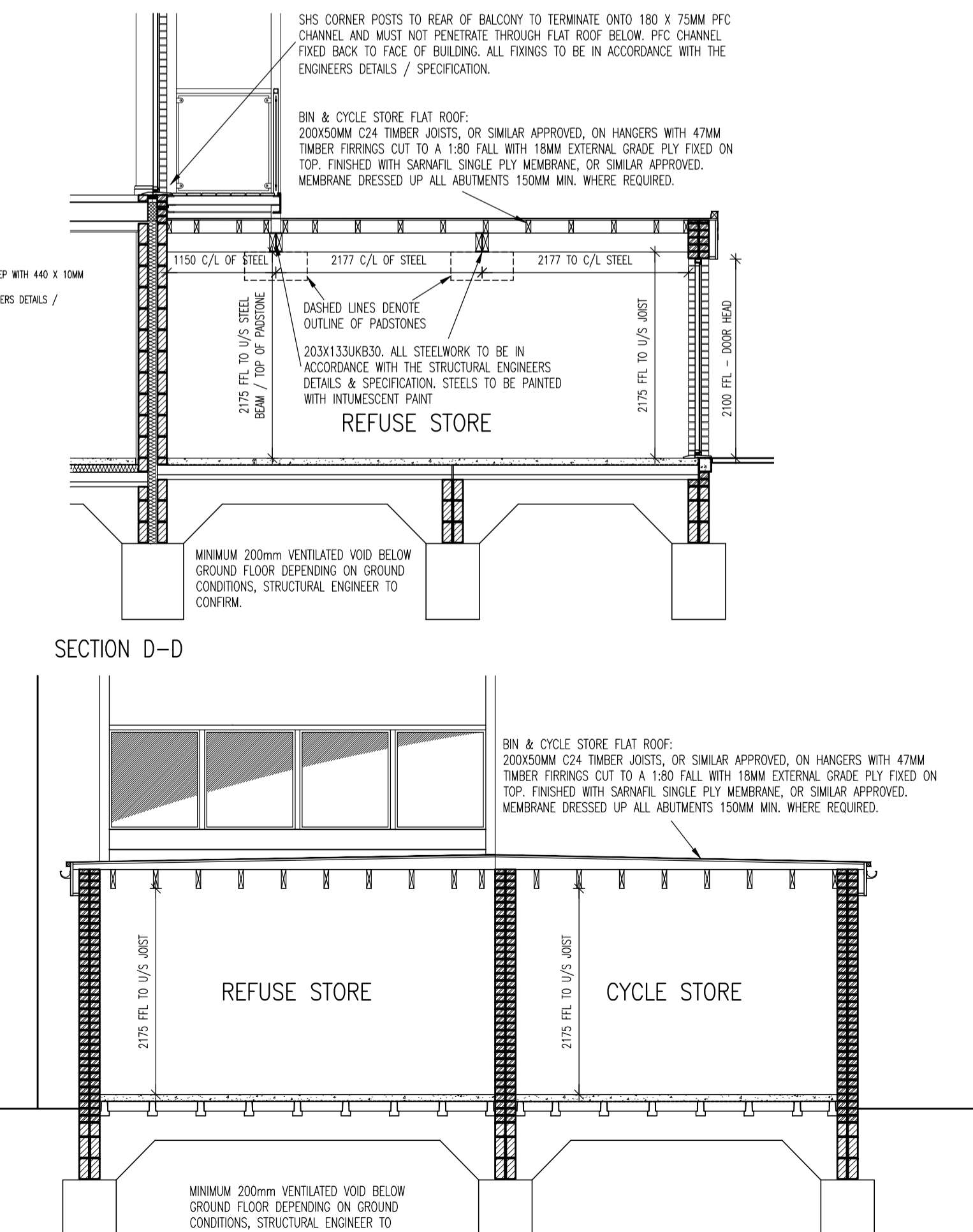
SECTION A-A



SECTION B-B



SECTION C-C



SECTION D-D



SECTION E-E



INNOVATE
architectural services

Client: TAYLOR WIMPEY NORTH THAMES

Project: CHEQUERSFIELD WELWYN GARDEN CITY

Drawing: BLOCK B SECTIONS A-A - E-E

Scale: SCALE 1:50 @ A1 Date: APRIL 2018

Drawn By: GC Checked By: GC Drawing No: 21188-BlockB-61 Rev. No: C8

CAD Ref: C:\TAYLOR WIMPEY NORTH THAMES\CHEQUERSFIELD

NOTES:
1. THIS DRAWING MUST NOT BE SCALED
2. THIS DRAWING IS TO BE READ IN CONJUNCTION WITH ALL OTHER PROJECT DRAWINGS
3. ALL DETAILS AND DRAWINGS MUST BE READ IN CONJUNCTION WITH THE '16 NATIONAL CONSTRUCTION SPECIFICATION FOR HOUSES & LOW RISE APARTMENTS'

Taylor Wimpey Health, Safety & Environmental Information
Extracted from the Significant Risk Register of the Taylor Wimpey AA22 Product Risk Assessment Document

1. Increased risk of fall when temporary boarding & jobs are removed from scaffold opening when filling voids
NOTE: Contractors to discuss above risk with the Site Manager in conjunction with the TMSE Manual before commencing work

All works must be carried out by a competent contractor working to an agreed safe system of work which reflects the controls highlighted above

THIS DRAWING IS A COPYRIGHT
All dimensions to be checked on site or in the workshop before work commences.
Only figured dimensions to be worked to. Any discrepancies to be reported to the Architect.