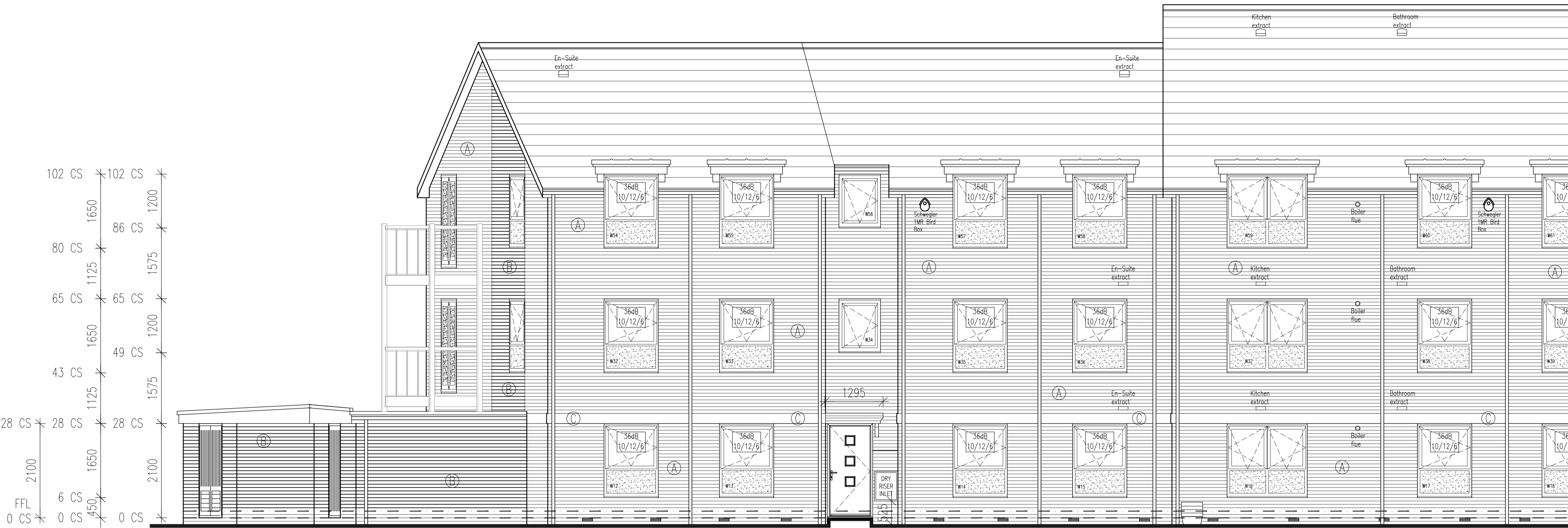


Rev. No.	Date	Amendment	Initial
Rev C1	07.05.19	Construction Issue	PJJH
Rev C2	29.05.19	Dry riser cabinet height indicated.	PJJH
Rev C3	30.07.19	Gas meter locations corrected.	GC
Rev C4	08.08.19	Pen thickness for brickwork revised to make it clearer where change in brick types is as client request.	GC
Rev C5	25.02.20	External ground level redrawn to accord with civil engineers drawing.	PJJH
Rev C6	28.07.20	Canopy indicated over communal entrance.	PJJH

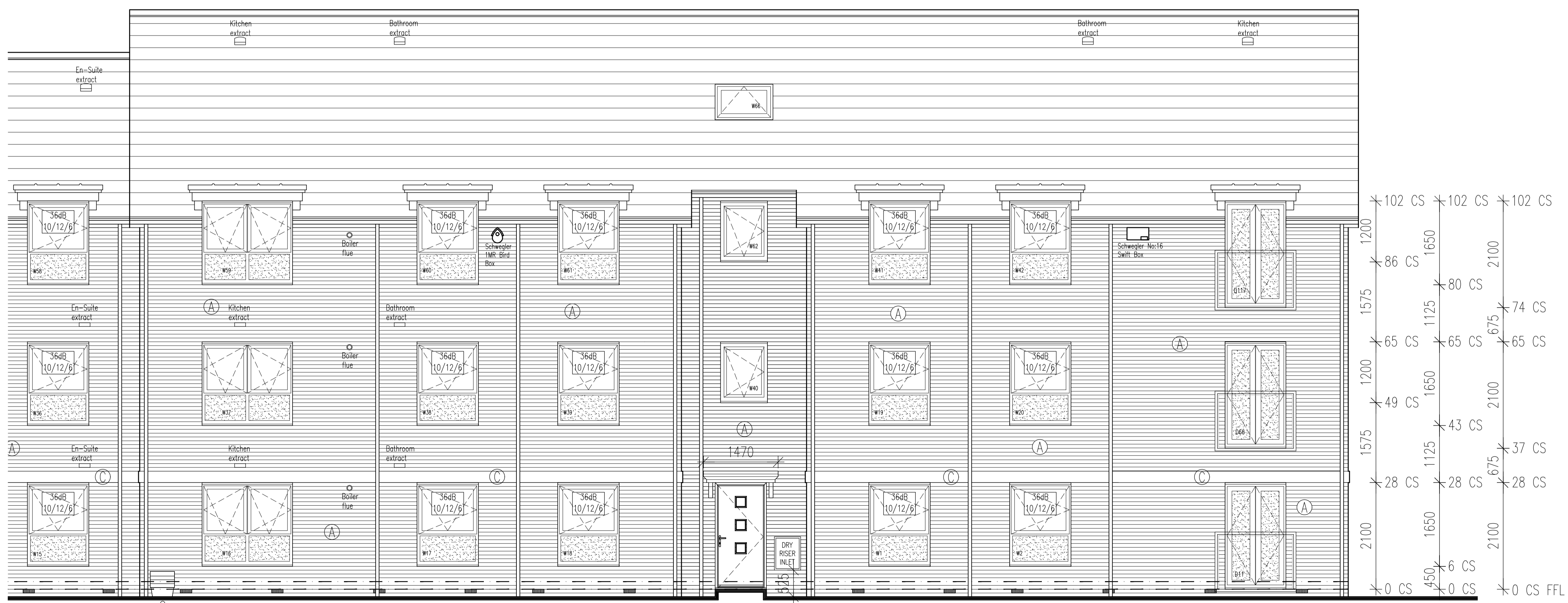
- NOTES:
- THIS DRAWING MUST NOT BE SCALED.
  - THIS DRAWING IS TO BE READ IN CONJUNCTION WITH ALL OTHER PROJECT DRAWINGS.
  - ALL DETAILS AND DRAWINGS MUST BE READ IN CONJUNCTION WITH THE 'TM NATIONAL CONSTRUCTION SPECIFICATION FOR HOUSES & LOW RISE APARTMENTS'.
  - THIS HOUSE TYPE IS APPROVED FOR USE ON SITES SUBJECT TO A DESIGN WIND SPEED OF UP TO 29M/S AND AT AN ALTITUDE GIVEN IN DRAWING 2 TO SECTION A1/2 OF THE APPROVED DOCUMENT TO THE BUILDING REGULATIONS FOR A SNOW LOAD OF 1.0 KN/M<sup>2</sup>. THE DESIGN WIND SPEED IS TO CONFIRM THE SUITABILITY OF THIS HOUSE FOR EACH SITE.
  - PROVIDE LEAD FLASHING, CAVITY TRAY & SOAKERS, STEEPED AS APPLICABLE, AT ALL WALL/ROOF OR CANOPY JUNCTIONS.
  - SW4 TO TERMINATE NO LESS THAN ROOMS ABOVE ANY OPENING & FINISHED WITH A PERFORATED COVER.
- WATERALS KEY:
- (A) BUFF BRICK
  - (B) RED BRICK
  - (C) 3 COURSE RECONSTRUCTED STONE BAND
- NOTE: 150MM DEEP FINISHING TO BE DESIGNED TO WITHSTAND AN IMPACT FORCE AS SPECIFIED IN THE UK BUILDING REGULATIONS & NERC CODES. OPENING OF WINDOW TO BE AT LEAST ROOM ABOVE FINISHED FLOOR LEVEL.
- NOTE: WINDOWS INDICATED WITH 36dB TO HAVE A MINIMUM Uf RATING OF 0.8.



REAR ELEVATION

1295MM WIDE (ACROSS FRONT OF CANOPY) X 900MM DEEP CANOPY OVER ENTRANCE.

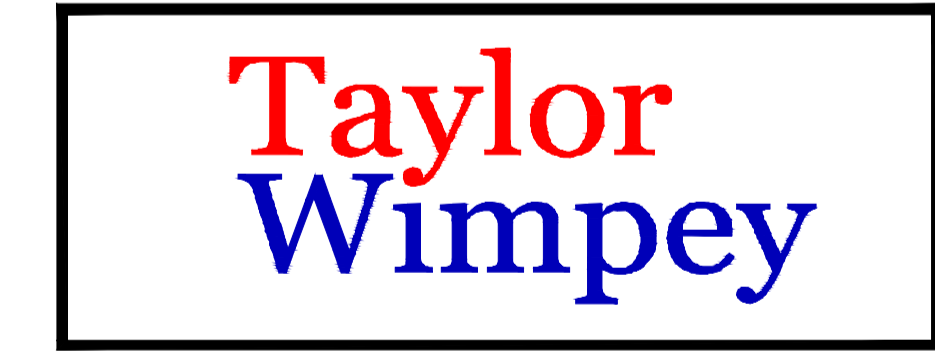
DPC TO BE 150MM ABOVE FINISHED FLOOR LEVEL



REAR ELEVATION

1470MM WIDE X 900MM DEEP CANOPY OVER ENTRANCE.

DPC TO BE 150MM ABOVE FINISHED FLOOR LEVEL



**INNOVATE**  
architectural services

Client:  
TAYLOR WIMPEY NORTH THAMES

Project:  
CHEQUERSFIELD  
WELWYN GARDEN CITY

Drawing:  
BLOCK B  
REAR ELEVATION

Scale: SCALE 1:50 @ A1  
Date: APRIL 2018  
Drawn By: GC  
Checked By: GC  
Drawing No: 21188-BlockB-52  
Rev. No: C6

CAD Ref:  
C:\TAYLOR WIMPEY NORTH THAMES\CHEQUERSFIELD

THIS DRAWING IS A COPYRIGHT  
All dimensions to be checked on site or in the workshop before work commences.  
Only figured dimensions to be worked to. Any discrepancies to be reported to the Architect.

Taylor Wimpey  
Health, Safety & Environmental Information  
Extracted from the Significant Risk Register of the Taylor Wimpey  
AA32 Product Risk Assessment Document

1. Increased risk of fall when temporary boarding & joists are removed from standard opening when filling staircase

NOTE: Contractors to discuss above risk with the Site Manager in conjunction with the TMRSE Manual before commencing work

All works must be carried out by a competent contractor working to an agreed safe system of work which reflects the controls highlighted above