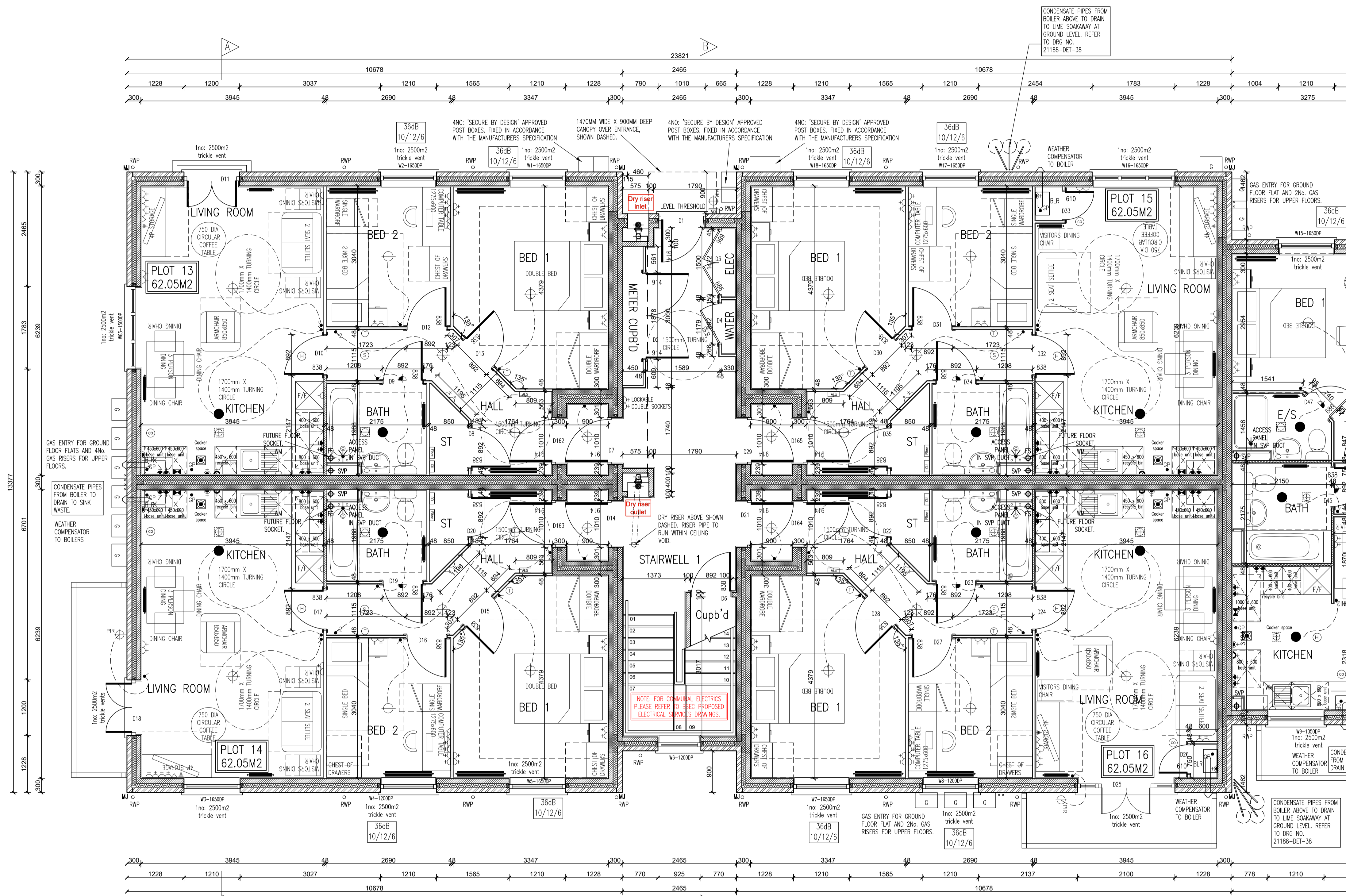


Rev. No.	Date	Amendment	Initial
Rev C1	07.05.19	Construction Issue	PJH
Rev C2	21.05.19	Acoustic insulation added to relevant partitions.	GC
Rev C3	02.07.19	Gas meters and riser re-located as client instruction.	GC
Rev C4	30.07.19	Condensate pipe drainage to boilers noted and living room electric adjusted as client requirements.	GC
Rev C5	12.08.19	Living/kitchen/dining to plot 16 revised to move boiler to kitchen, cavity fire stops changed to T shape and flat entrance doors aligned with inner face of wall.	GC
Rev C6	29.08.19	Cooker space indicated with gas point & switched fused spur, in accordance with the clients requirements.	PJH
Rev C7	20.09.19	Weather compensator note added adjacent to boilers. Air leakage rate adjusted.	GC
Rev C8	12.11.19	Boiler cupboard dimensions added to Plot 16.	GC
Rev C9	19.11.19	Radiator positions & thermostats updated to accord with heating designs.	PJH
Rev C10	08.01.20	Communal electric removed and noted added to refer to BSEC electrical designs.	PJH
Rev C11	28.07.20	Canopy indicated over communal entrance.	PJH

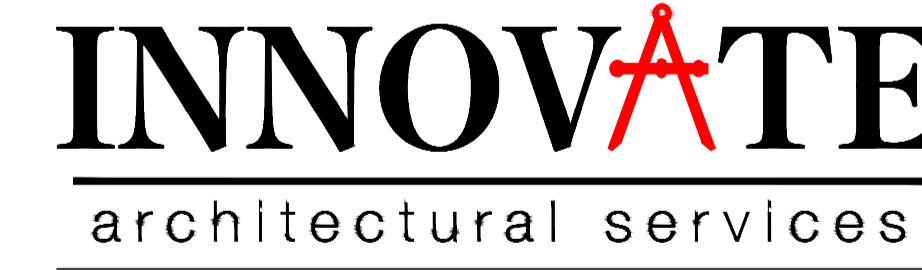
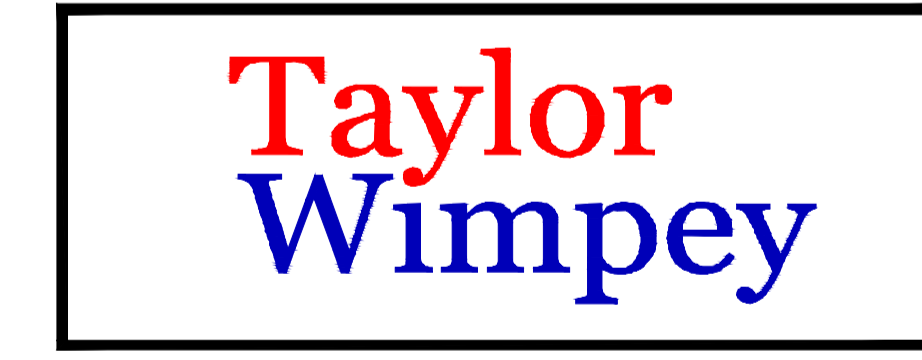


SYMBOL	DESCRIPTION
[Symbol]	13 AMP SWITCHED SOCKET OUTLET
[Symbol]	13 AMP SWITCHED SOCKET OUTLET WITH USB OUTLET
[Symbol]	13 AMP SWITCHED SOCKET OUTLET
[Symbol]	13 AMP SOCKET OUTLET
[Symbol]	13 AMP SWITCHED SOCKET OUTLET ABOVE WORKTOP
[Symbol]	13 AMP SWITCHED SOCKET OUTLET ABOVE WORKTOP
[Symbol]	13 AMP SWITCHED SOCKET OUTLET ABOVE WORKTOP
[Symbol]	MULTI SPD SWITCH ABOVE WORKTOP CONTROLLING UNSWITCHED SOCKETS BELOW WORKTOP & FAN SOCKET
[Symbol]	13 AMP SPUR UNIT
[Symbol]	13 AMP SWITCHED SPUR UNIT
[Symbol]	ONE WAY SWITCH
[Symbol]	TWO WAY SWITCH
[Symbol]	TELEPHONE POINT
[Symbol]	TELEVISION POINT
[Symbol]	FIBRE OPTIC ENTRY POINT
[Symbol]	COOKER SWITCH (1100MM ABOVE FFL)
[Symbol]	CONSUMER SOURCE UNIT (SWM RECESSOR WHERE REQUIRED (SWITCHES POSITIONED BETWEEN 1300-1400MM ABOVE F.F.L.))
[Symbol]	SHOWER PAN AS SITE SPEC
[Symbol]	CEILING LIGHTING POINT - PENDANT TYPE WITH ENERGY EFFICIENT LAMPS
[Symbol]	CEILING LIGHTING POINT - BATTEN TYPE WITH ENERGY EFFICIENT LAMPS
[Symbol]	RECESSED SPARKPROOF ENERGY EFFICIENT DOWNLIGHTER OR RECESSOR TO TM SPECIFICATION
[Symbol]	DOWN LIGHTING ENERGY EFFICIENT OR LED, REFER TO TM SPECIFICATION
[Symbol]	WALL MOUNTED LIGHTING POINT
[Symbol]	WALL MOUNTED LIGHTING POINT WITH PIR SENSOR
[Symbol]	LOW ENERGY 2D DRUM LIGHT FITTING ON MOTOR CHAINDRIVE
[Symbol]	SPARKPROOF IPRO FITTING WITH ENERGY EFFICIENT LAMP (TO BE PRO ABOVE BATHS & SHOWERS)
[Symbol]	CENTRAL HEATING PROGRAMMER & DIMMER TIMER (CYLINDER TYPE)
[Symbol]	PROGRAMMER TEMPERATURE SENSOR (Cylinder Only)
[Symbol]	PROGRAMMABLE ROOM THERMOSTAT
[Symbol]	DECENTRALISED CONTINUOUS RUNNING EXTRACT FAN
[Symbol]	RECYCLING COOKER HOOD
[Symbol]	3 POLE ISOLATOR SWITCH FOR EXTRACT MARKED WITH FAN SYMBOL
[Symbol]	CENTRAL HEATING WIRING JUNCTION BOX
[Symbol]	SMOKE DETECTOR
[Symbol]	HEAT DETECTOR
[Symbol]	CO ALARM TO BE WALL MOUNTED AT A HEIGHT GREATER THAN THE HEIGHT OF ANY DOOR OR WINDOW OPENING BUT AT LEAST 150mm FROM THE CEILING AT A HORIZONTAL DISTANCE OF BETWEEN 1-3m FROM THE SIDE OF THE FIELD BURNING APPLIANCE. ALARM NOT TO BE FITTED IN A STORE/CLOSET, DIRECTLY ABOVE A SINK/COOKER OR NEXT TO A DOOR/WINDOW OR ANYWHERE THAT COULD BE AFFECTED BY DRAUGHTS. NOTE: IN ALL CASES LOCATIONS TO BE AGREED WITH THE GAS SAFE REGISTERED ENGINEER.
[Symbol]	SHOWER HEAD
[Symbol]	GAS POINT
[Symbol]	LOCKABLE TAP TO BIN STORE
[Symbol]	AUDIO ENTRY SYSTEM TO SPECIALIST DESIGN

GROUND FLOOR PLAN

BRICK/BLOCKWORK LEGEND	STUDWORK LEGEND	
External Walls	STUD PARTITION - 80MM OVERALL THICKNESS COMPRISING 63.5MM TAPER STUD WITH 12.5MM PLASTERBOARD EITHER SIDE - MATCH ROOFING TO META. STD. REFER TO T.B. No. 014/04/14 FOR METAL STUD SETTING OUT GUIDANCE	
103mm FACING BRICKWORK	BUTTRESS STUD PARTITION - 125MM OVERALL THICKNESS COMPRISING 75.0MM TAPER STUD WITH 12.5MM PLYWOOD EITHER SIDE & FINISHED WITH 12.5MM PLASTERBOARD (SEE STD DETAIL W13-06-18)	
100mm BLOCKWORK - 70A/mm ARKOTITE BLOCKWORK TO GROUND FLOOR, 3.0N/mm ² ARKOTITE BLOCKWORK TO 1ST & 2ND FLOORS. CONCRETE TO BE IN ACCORDANCE WITH THE CONSTRUCTION SPECIFICATION / STRUCTURAL ENGINEERS DETAILS.	ACOUSTIC STUD PARTITION (TO TAYLOR WIMPEY SPECIFICATION)	
Party Walls	100mm BLOCKWORK - 70A/mm (GROUND FLOOR) & 3.0N/mm ² (1ST & 2ND FLOOR) ARKOTITE (800-800g/m ³) FOR L=1000. PLEASE REFER TO ROOFING DRAWINGS & STRUCTURAL ENGINEERS SPECIFICATION.	1/2 HOUR FIRE RESISTANCE TO STUD PARTITION

- NOTES:
- THIS DRAWING MUST NOT BE SCALED
 - THIS DRAWING IS TO BE READ IN CONJUNCTION WITH ALL OTHER PRODUCT DRAWINGS
 - ALL DETAILS AND DRAWINGS MUST BE READ IN CONJUNCTION WITH THE TM NATIONAL CONSTRUCTION SPECIFICATION FOR HOUSES & LOW RISE APARTMENTS.



Client: TAYLOR WIMPEY NORTH THAMES

Project: CHEQUERSFIELD WELWYN GARDEN CITY

Drawing: BLOCK B GROUND FLOOR PLAN SHEET 1 OF 2

Scale: SCALE 1:50 @ A1
 Date: APRIL 2018
 Drawn By: GC
 Checked By: GC
 Drawing No: 21188-BlockB-21
 Rev. No: C11

Health, Safety & Environmental Information
 Extracted from the Significant Risk Register of the Taylor Wimpey A&Z Product Risk Assessment Document
 1. Increased risk of fall when temporary boarding & joints are removed from standard opening when fitting cladding
 NOTE: Contractors to discuss above risk with the Site Manager in conjunction with the TMSSE Manual before commencing work
 All works must be carried out by a competent contractor working to an agreed safe system of work which reflects the controls highlighted above

THIS DRAWING IS A COPYRIGHT
 All dimensions to be checked on site or in the workshop before work commences.
 Only figured dimensions to be worked to. Any discrepancies to be reported to the Architect.