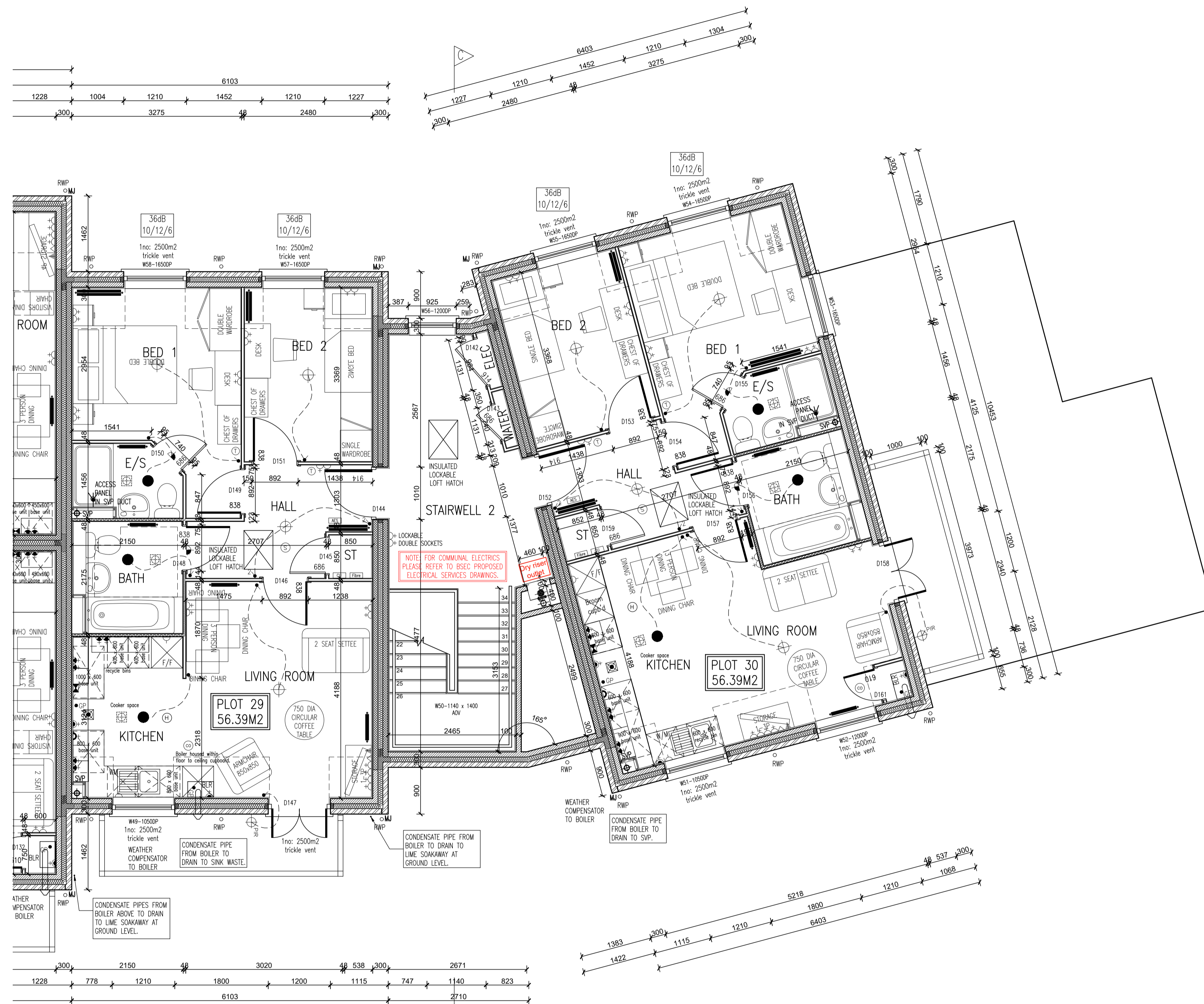


Rev. No.	Date	Amendment	Initial
Rev C1	07.05.19	Construction Issue	PJH
Rev C2	21.05.19	Acoustic insulation added to relevant partitions.	GC
Rev C3	30.07.19	Condensate pipe drainage to boilers noted and living room electricians adjusted as client requirements. Bathrooms adjusted to allow half height boxing behind wc & basin.	GC
Rev C4	12.08.19	Living/kitchen/dining to plot 29 revised to move boiler to kitchen, cavity fire stops changed to T shape and flat entrance doors aligned with inner face of wall.	GC
Rev C5	29.08.19	Cooker space indicated with gas point & switched fused spur, in accordance with the clients requirements.	PJH
Rev C6	20.09.19	Weather compensator note added adjacent to boiler locations. Air leakage rate adjusted.	GC
Rev C7	19.11.19	Radiator positions & thermostats updated to accord with heating designs.	PJH
Rev C8	08.01.20	Communal electrics removed and noted added to refer to BSEC electrical designs.	PJH
Rev C9	03.06.20	Plot 29 boiler housed within floor to ceiling cupboard.	PJH



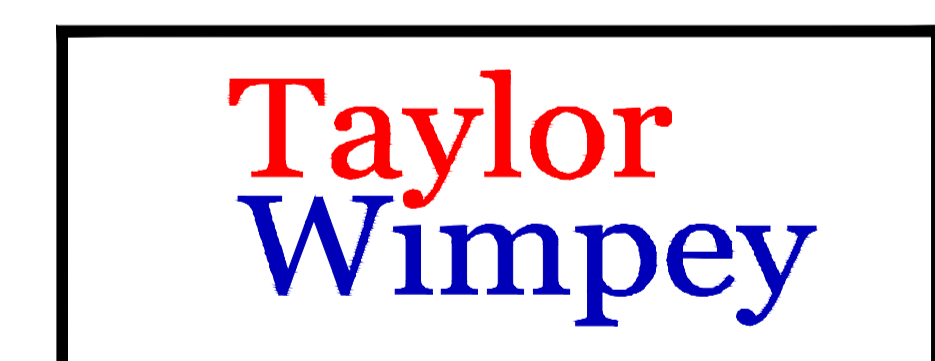
SYMBOL	DESCRIPTION
[Symbol]	13 AMP/17W SWITCHED SOCKET OUTLET
[Symbol]	13 AMP/17W SWITCHED SOCKET OUTLET WITH USB OUTLET
[Symbol]	13 AMP SWITCHED SOCKET OUTLET
[Symbol]	13 AMP SOCKET OUTLET
[Symbol]	13 AMP/17W SWITCHED SOCKET OUTLET ABOVE WORKTOP
[Symbol]	13 AMP/17W SWITCHED SOCKET OUTLET ABOVE WORKTOP WITH USB OUTLET
[Symbol]	13 AMP SWITCHED SOCKET OUTLET ABOVE WORKTOP
[Symbol]	MULTI GRID SWITCH ABOVE WORKTOP CONTROLLING UNWICHTED SOCKETS BELOW WORKTOP & FAN BOOST SWITCH
[Symbol]	13 AMP SPUR UNIT
[Symbol]	13 AMP SWITCHED SPUR UNIT
[Symbol]	ONE WAY SWITCH
[Symbol]	TWO WAY SWITCH
[Symbol]	TELEPHONE POINT
[Symbol]	TELEVISION POINT
[Symbol]	FIBRE OPTIC ENTRY POINT
[Symbol]	COOKER SWITCH (1100MM ABOVE FFL)
[Symbol]	CONSUMER SERVICE UNIT, SEM RECESSED WHERE REQUIRED (SWITCHES POSITIONED BETWEEN 1350-1650MM ABOVE F.F.L.)
[Symbol]	SHOWER PAN AS SITE SPEC
[Symbol]	CEILING LIGHTING POINT - PENDANT TYPE WITH ENERGY EFFICIENT LAMPS
[Symbol]	CEILING LIGHTING POINT - BATTEN TYPE WITH ENERGY EFFICIENT LAMPS
[Symbol]	RECESSED SPREADER ENERGY EFFICIENT DOWNLIGHTER OR LED, REFER TO THE SPECIFICATION
[Symbol]	DOWN LIGHTERS, ENERGY EFFICIENT OR LED, REFER TO THE SPECIFICATION
[Symbol]	WALL MOUNTED LIGHTING POINT
[Symbol]	WALL MOUNTED LIGHTING POINT WITH PIR SENSOR
[Symbol]	LOW ENERGY 2D DOWN LIGHT FITTING ON MOTION SENSORS
[Symbol]	SPRINKLER FRO FITTING WITH ENERGY EFFICIENT LAMP (TO BE SP5 ABOVE BATHS & SHOWERS)
[Symbol]	CENTRAL HEATING PROGRAMMER & DIMMER (Cylinder Only)
[Symbol]	PROGRAMMER TEMPERATURE SENSOR (Cylinder Only)
[Symbol]	PROGRAMMABLE ROOM THERMOSTAT
[Symbol]	DECENTRALISED CONTINUOUS RUNNING EXTRACT FAN
[Symbol]	RECIRCULATING COOKER HOOD
[Symbol]	3 POLE ISOLATOR SWITCH FOR EXTRACT MARKED WITH FAN SYMBOL
[Symbol]	CENTRAL HEATING WIRING JUNCTION BOX
[Symbol]	RADIATOR
[Symbol]	SMOKE DETECTOR
[Symbol]	HEAT DETECTOR
[Symbol]	CO ALARM TO BE WALL MOUNTED, AT A HEIGHT GREATER THAN THE HEIGHT OF ANY DOOR OR WINDOW OPENING BUT AT LEAST 150mm FROM THE CEILING, AT A HORIZONTAL DISTANCE OF BETWEEN 1-1.5m FROM THE EDGE OF THE FUEL BURNING APPLIANCE, ALARM NOT TO BE FITTED IN A STORE/OUTBOARD, DIRECTLY ABOVE A SINK/COOKER OR NEXT TO A DOOR/WINDOW OR ANYWHERE THAT COULD BE AFFECTED BY DRAUGHTS. NOTE: ALL GASES LOGICALLY TO BE ASSESS WITH THE GAS SAFE REGISTERED ENGINEER.
[Symbol]	GAS POINT
[Symbol]	SHOWER HEAD
[Symbol]	LOOKABLE TAP TO BIN STORE
[Symbol]	AUDIO ENTRY SYSTEM TO SPECIALIST DESIGN

BRICK/BLOCKWORK LEGEND	
[Symbol]	External Walls
[Symbol]	103mm FACED BRICKWORK
[Symbol]	100mm BLOCKWORK - 1.2N/m ² ARSCETE BLOCKWORK TO GROUND FLOOR, 3.0N/m ² ARSCETE BLOCKWORK TO 1ST & 2ND FLOORS, IDENTIFY TO BE IN ACCORDANCE WITH THE CONSTRUCTION SPECIFICATION / STRUCTURAL ENGINEERS DETAILS.
[Symbol]	Party Walls
[Symbol]	100mm BLOCKWORK - 1.2N/m ² (GROUND FLOOR) & 3.0N/m ² (ABOVE GROUND FLOOR) ARSCETE (800-800kg/m ³) FOR E-M-B PLEASE REFER TO ROBUST STANDARD DETAILS & STRUCTURAL ENGINEERS SPECIFICATION.

STUDWORK LEGEND	
[Symbol]	STUD PARTITION - 80MM OVERALL THICKNESS COMPOSING 63.5MM TIMBER STUD WITH 12.5MM PLASTERBOARD EITHER SIDE - WHEN REFERRED TO METAL STUD REFER TO T.B. No. 0114/04/14 FOR METAL STUD SETTING OUT GUIDANCE.
[Symbol]	BUTTRESS STUD PARTITION - 125MM OVERALL THICKNESS COMPOSING 75MM TIMBER STUD WITH 12.5MM PLASTERBOARD EITHER SIDE & FRAMED WITH 12.5MM PLASTERBOARD (SEE DETAIL M13-B-10)
[Symbol]	ACOUSTIC STUD PARTITION (TO DIALOG WIMPEY SPECIFICATION)
[Symbol]	HALF HOUR FIRE RESISTANCE TO STUD PARTITION

- NOTES:
- THIS DRAWING MUST NOT BE SCALED
 - THIS DRAWING IS TO BE READ IN CONJUNCTION WITH ALL OTHER PROJECT DRAWINGS
 - ALL DETAILS AND DRAWINGS MUST BE READ IN CONJUNCTION WITH THE NATIONAL CONSTRUCTION SPECIFICATION FOR HOUSES & LOW RISE APARTMENTS.

Taylor Wimpey	
Health, Safety & Environmental Information	
Extracted from the Significant Risk Register of the Taylor Wimpey AA32 Product Risk Assessment Document	
1. Increased risk of fall when temporary boarding & joints are removed from stairwell opening when being cleaned.	
NOTE: Contractors to discuss above risk with the Site Manager in conjunction with the TMSSE Manual before commencing work	
All works must be carried out by a competent contractor working to an agreed safe system of work which reflects the controls highlighted above	



INNOVATE
architectural services

Client:
TAYLOR WIMPEY NORTH THAMES

Project:
CHEQUERSFIELD
WELWYN GARDEN CITY

Drawing:
BLOCK B
SECOND FLOOR PLAN
SHEET 2 OF 2

Scale: 1:50 @ A1
Date: APRIL 2018
Drawn By: GC
Checked By: GC
Drawing No: 21188-BlockB-26
Rev. No: C9
CAD Ref: C:\TAYLOR WIMPEY NORTH THAMES\CHEQUERSFIELD

THIS DRAWING IS A COPYRIGHT
All dimensions to be checked on site or in the workshop before work commences.
Only figured dimensions to be worked to. Any discrepancies to be reported to the Architect.