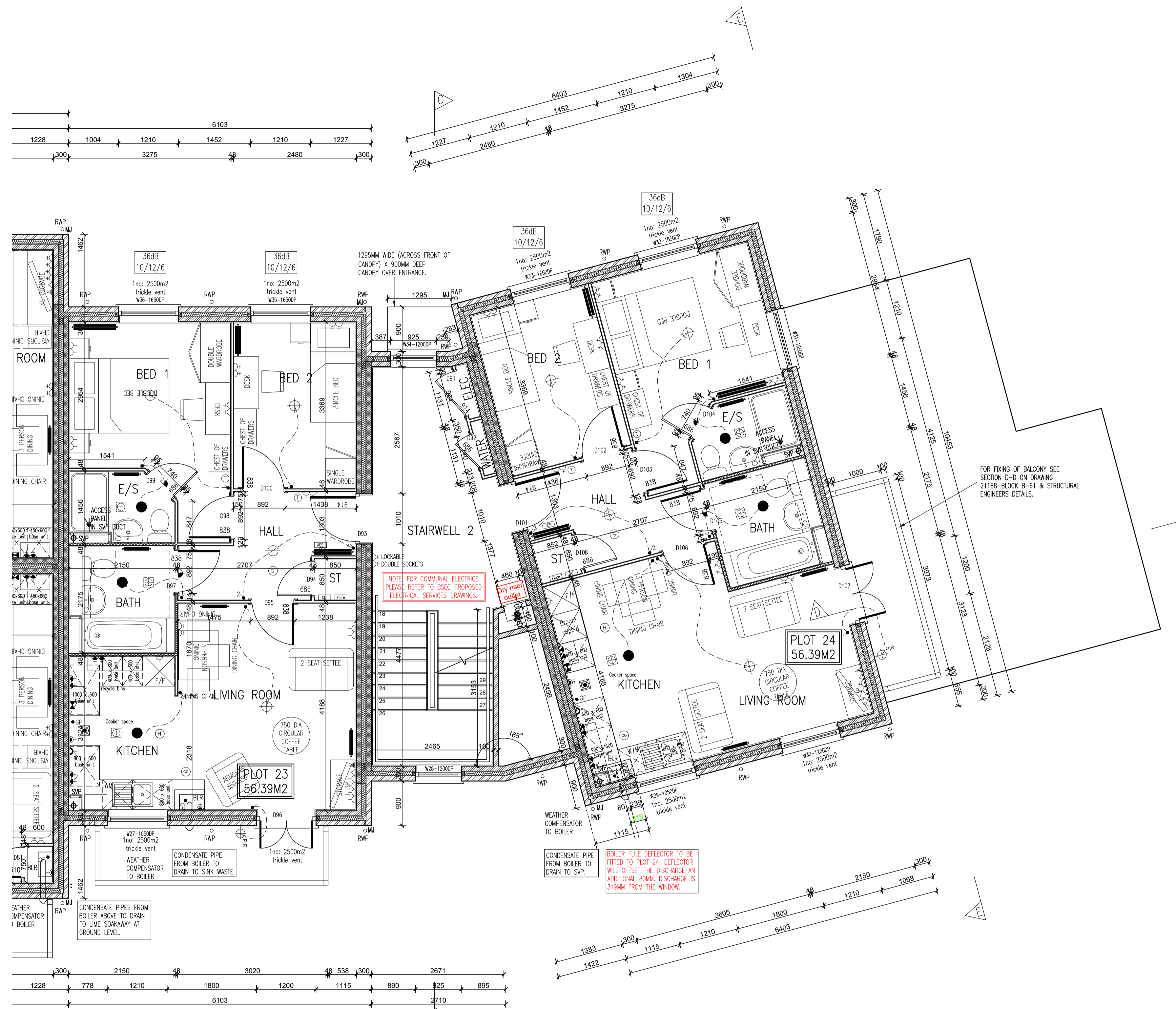


Rev. No.	Date	Amendment	Initial
Rev C1	07.05.19	Construction Issue	PJH
Rev C2	21.05.19	Acoustic insulation added to relevant partitions.	GC
Rev C3	30.07.19	Condensate pipe drainage to boilers noted and living room electric adjusted as client requirements. Bathrooms adjusted to allow half height boxing behind WC & basin.	GC
Rev C4	12.08.19	Living/kitchen/entrance to plot 23 revised to move boiler to kitchen. cavity fire stops changed to T shape and flat entrance doors aligned with inner face of wall.	GC
Rev C5	29.08.19	Cooker space indicated with gas point & switched fused spur. in accordance with the clients requirements.	PJH
Rev C6	20.09.19	Weather compensator note added adjacent to boiler locations. Air leakage rate adjusted.	GC
Rev C7	19.11.19	Radiator positions & thermostats updated to accord with heating designs.	PJH
Rev C8	08.01.20	Communal electrics removed and noted to refer to BSEC electrical designs.	PJH
Rev C9	22.01.20	Boiler flue deflector note added to Plot 24 & setting-out of flue indicated.	PJH
Rev C10	28.07.20	Canopy indicated over communal entrance.	PJH



SYMBOL	DESCRIPTION
[Symbol]	13 AMP 1P+N SWITCHED SOCKET OUTLET
[Symbol]	13 AMP 1P+N SWITCHED SOCKET OUTLET WITH USB OUTLET
[Symbol]	13 AMP SWITCHED SOCKET OUTLET
[Symbol]	13 AMP SOCKET OUTLET
[Symbol]	13 AMP 1P+N SWITCHED SOCKET OUTLET ABOVE WORKTOP
[Symbol]	13 AMP SWITCHED SOCKET OUTLET ABOVE WORKTOP
[Symbol]	13 AMP SWITCHED SOCKET OUTLET ABOVE WORKTOP WITH USB OUTLET
[Symbol]	13 AMP SWITCHED SOCKET OUTLET ABOVE WORKTOP
[Symbol]	WALL MOUNT SWITCH ABOVE WORKTOP CONTROLLING UNMOUNTED SOCKETS BELOW WORKTOP & FAN BOOST SWITCH
[Symbol]	13 AMP SPUR UNIT
[Symbol]	13 AMP SWITCHED SPUR UNIT
[Symbol]	ONE WAY SWITCH
[Symbol]	TWO WAY SWITCH
[Symbol]	TELEPHONE POINT
[Symbol]	TELEVISION POINT
[Symbol]	FIBRE OPTIC ENTRY POINT
[Symbol]	COOKER SWITCH (1100MM ABOVE FFL)
[Symbol]	CONSUMER SERVICE UNIT. SWM REQUIRED WHERE REQUIRED (SWITCHES POSITIONED BETWEEN 1500-1600MM ABOVE FFL)
[Symbol]	SHOWER POINT AS SITE SPEC
[Symbol]	CEILING LIGHTING POINT - PENDANT TYPE WITH ENERGY EFFICIENT LAMPS
[Symbol]	CEILING LIGHTING POINT - BATTEN TYPE WITH ENERGY EFFICIENT LAMPS
[Symbol]	RECESSED SPLASHPROOF ENERGY EFFICIENT DOWNLIGHTER OR LED. REFER TO TM SPECIFICATION
[Symbol]	DOWN LIGHTERS. ENERGY EFFICIENT OR LED. REFER TO TM SPECIFICATION
[Symbol]	WALL MOUNTED LIGHTING POINT
[Symbol]	WALL MOUNTED LIGHTING POINT WITH PIR SENSOR
[Symbol]	LOW ENERGY 2D DRUM LIGHT FITTING ON MOTOR SENSOR
[Symbol]	SPLASHPROOF IP60 FITTING WITH ENERGY EFFICIENT LAMP (TO BE PIPED ABOVE BATHS & SHOWERS)
[Symbol]	CENTRAL HEATING PROGRAMMER & DIM TIMER (24hour On/Off)
[Symbol]	PROGRAMMER TEMPERATURE SENSOR (24hour On/Off)
[Symbol]	PROGRAMMABLE ROOM THERMOSTAT
[Symbol]	DECENTRALISED CONTINUOUS RUNNING EXTRACT FAN
[Symbol]	RECYCLATING COOKER HOOD
[Symbol]	3 POLE ISOLATOR SWITCH FOR EXTRACT MARKED WITH FAN SYMBOL
[Symbol]	CENTRAL HEATING WIRING JUNCTION BOX
[Symbol]	FRAMATOR
[Symbol]	SMOKE DETECTOR
[Symbol]	HEAT DETECTOR
[Symbol]	CO ALARM TO BE WALL MOUNTED AT A HEIGHT GREATER THAN THE HEIGHT OF ANY DOOR OR WINDOW OPENING BUT AT LEAST 1500mm FROM THE CEILING. IF A HORIZONTAL DISTANCE OF BETWEEN 1-3m FROM THE EDGE OF THE FUEL BURNING APPLIANCE. ALARM NOT TO BE FITTED IN A STORE/CLOSET, DIRECTLY ABOVE A SINK/COOKER OR NEXT TO A DOOR/WINDOW OR ANYWHERE THAT COULD BE AFFECTED BY EXHAUSTS. NOTE: IN ALL CASES LOCATIONS TO BE AGREED WITH THE GAS SAFE REGISTERED ENGINEER.
[Symbol]	GAS POINT
[Symbol]	LOOKABLE RAMP TO DRN SYSTEM
[Symbol]	AUDIO ENTRY SYSTEM TO SPECIALIST DESIGN

LEGEND
 CME = CEILING MOUNTED EXTRACT FAN BLR = BOILER
 C = GAS METER E = ELECTRIC METER
 RWP = RAIN WATER PIPE SVP = SOIL VENT PIPE
 AW = AIR ADMITTANCE VALVE AP = 75 DRN VENT PIPE

APPROVED DOCUMENT PART 8 (2008) TECHNICAL REQUIREMENTS:
 a) THERMOCLIMATIC WIRING WIRE DENCE TO BE FITTED TO BATHS IN ACCORDANCE WITH APPROVED DOCUMENT G (Apr 2010)
 b) WATER USAGE WILL NOT EXCEED 120 LITRES PER PERSON PER DAY TO COMPLY WITH APPROVED DOCUMENT G (Apr 2010)

PLEASE REFER TO:
 SECTION 03 - EXTERNAL WALLS (FULL FILL)
 SECTION 09 - INTERNAL WALLS
 FROM THE TM NATIONAL CONSTRUCTION SPECIFICATION FOR HOUSES & LOW RISE APARTMENTS

VENTILATION REQUIREMENTS
 SYSTEM IS TO BE A DECENTRALISED CONTINUOUS MECHANICAL EXTRACT FAN (GREENWOOD COOP TYPE) TO COMPLY WITH APPROVED DOCUMENT F. TABLE 5.16 AIR LEAKAGE RATES TO BE SET AT A DEFAULT OF 4m³/(h.m²).
 NOTE: WC & BATHROOM/ENSUITE (no window) - BOOST VIA LIGHT SWITCH WITH BATT IN HANDROOM & TIME
 WC & BATHROOM/ENSUITE (with window) - BOOST VIA BUILT IN HUMIDISTAT & TIMER PLUS MANUAL BOOST SWITCH (NOT LIGHT SWITCH)

FIRST FLOOR PLAN

BRICK/BLOCKWORK LEGEND	
[Symbol]	External Walls
[Symbol]	103mm FACING BRICKWORK
[Symbol]	103mm BLOCKWORK - 7.0N/m² ARCHITECT BLOCKWORK TO SECOND FLOOR. 3.6N/m² ARCHITECT BLOCKWORK TO 1ST & 2ND FLOORS. DENSITY TO BE IN ACCORDANCE WITH THE CONSTRUCTION SPECIFICATION / STRUCTURAL ENGINEERS DETAILS.
[Symbol]	Party Walls
[Symbol]	103mm BLOCKWORK - 7.0N/m² (GROUND FLOOR) & 3.6N/m² (ABOVE GROUND FLOOR) ARRETE (600-800kg/m²) FOR E-WU-30. PLEASE REFER TO ROBERT STANDARD DETAILS & STRUCTURAL ENGINEERS SPECIFICATION.

STUDWORK LEGEND	
[Symbol]	STUD PARTITION - 88MM OVERALL THICKNESS COMPRISING 63.50MM TIMBER STUD WITH 12.5MM PLASTERBOARD EITHER SIDE - WHEN REFERRED TO METAL STUD REFER TO IS. No. 0114/04/14 FOR METAL STUD SETTING OUT GUIDANCE.
[Symbol]	BUTTRISS STUD PARTITION - 125MM OVERALL THICKNESS COMPRISING 75x75MM TIMBER STUD WITH 12.5MM PLASTERBOARD EITHER SIDE & FINISHED WITH 12.5MM PLASTERBOARD (SEE STD DETAIL M13-08-18)
[Symbol]	ACOUSTIC STUD PARTITION (TO TAYLOR WIMPEY SPECIFICATION)
[Symbol]	HALF HOUR FIRE RESISTANCE TO STUD PARTITION

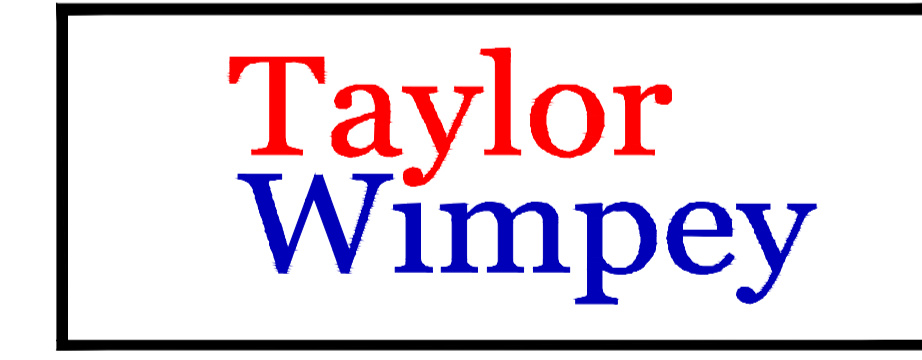
- NOTES:**
- THIS DRAWING MUST NOT BE SCALED.
 - THIS DRAWING IS TO BE READ IN CONJUNCTION WITH ALL OTHER PROJECT DRAWINGS.
 - ALL DETAILS AND DRAWINGS MUST BE READ IN CONJUNCTION WITH THE TM NATIONAL CONSTRUCTION SPECIFICATION FOR HOUSES & LOW RISE APARTMENTS.

Taylor Wimpey
 Health, Safety & Environmental Information
 Extracted from the Significant Risk Register of the Taylor Wimpey AA32 Product Risk Assessment Document

1. Increased risk of fall when temporary boarding & joints are removed from standard opening when fitting glazing.

NOTE: Contractors to discuss above risk with the Site Manager in conjunction with the TAYLOR WIMPEY Manual before commencing work.

All works must be carried out by a competent contractor working to an agreed safe system of work which reflects the controls highlighted above.



INNOVATE
 architectural services

Client:
 TAYLOR WIMPEY NORTH THAMES

Project:
 CHEQUERSFIELD
 WELWYN GARDEN CITY

Drawing:
 BLOCK B
 FIRST FLOOR PLAN
 SHEET 2 OF 2

Scale: SCALE 1:50 @ A1
 Date: APRIL 2018
 Drawn By: GC
 Checked By: GC
 Drawing No: 21188-BlockB-24
 Rev. No: C10

THIS DRAWING IS A COPYRIGHT
 All dimensions to be checked on site or in the workshop before work commences.
 Only figured dimensions to be worked to. Any discrepancies to be reported to the Architect.