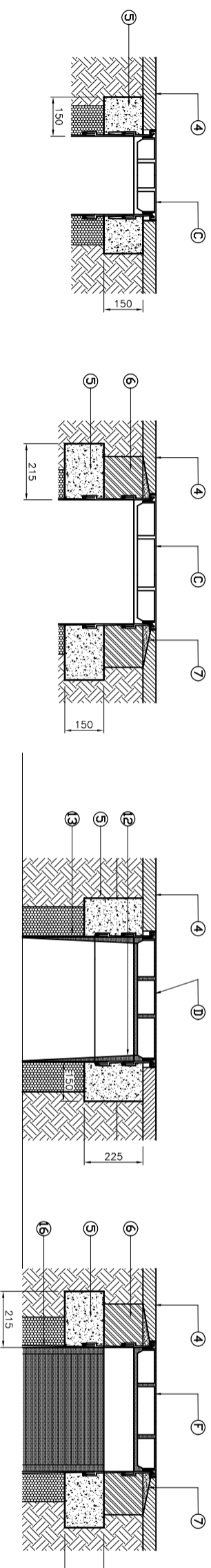
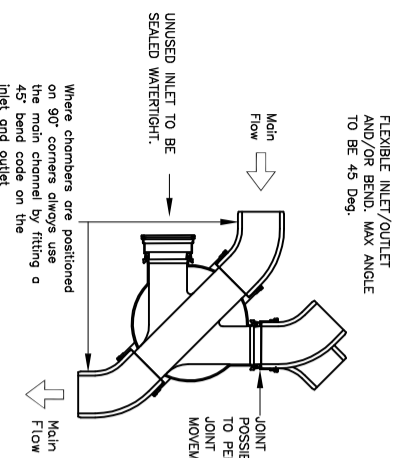
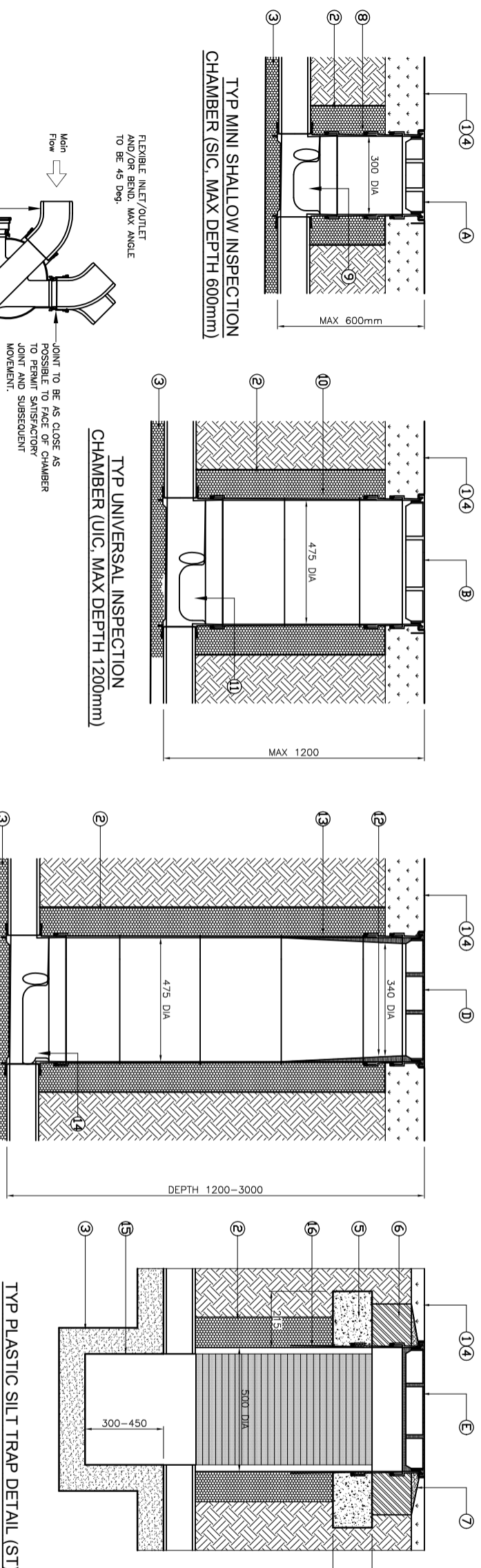


NOTE: PLASTIC CHAMBERS AND RINGS SHALL COMPLY WITH BS EN 13598-1 AND BS EN 13598-2 OR HAVE EQUIVALENT INDEPENDENT APPROVAL.

INSTALLATION IN TRAFFICKED AREAS.



INSTALLATION IN NON-TRAFFICKED AREAS.



Where chambers are positioned on 90° corners always use the chamfered by fitting a 45° chamfer on the inlet and outlet.

UNUSED INLET TO BE SEALED WATERTIGHT.

Main Flow

JOINT TO BE AS CLOSE AS POSSIBLE TO FACE OF CHAMBER TO PERMIT SATISFACTORY JOINT AND SUBSEQUENT MOVEMENT.

TYP INSPECTION CHAMBER DETAILS.

- ① TOPSOIL TO LANDSCAPING SPECIFICATION.
- ② MIN 150 SIDE FILL OF SELECTED 7.5-DIG MATERIAL WITH PARTICLE SIZES NO LARGER THAN 40mm OF GRANULAR MATERIAL TO PREVENT SETTLEMENT. MINIMUM 150mm IN LAYERS NOT EXCEEDING 150mm.
- ③ GRANULAR PIPE BEDDING MATERIAL MIN 100 THK.
- ④ FINISHED PAVEMENT CONSTRUCTION.
- ⑤ GEN 3 OR S14 CONCRETE COLLAR.
- ⑥ TWO COURSES OF ENGINEERING BRICKWORK.
- ⑦ FRAME BEDED AND LAUNCHED IN CLASS 1 CEMENT MORTAR.
- ⑧ SHALLOW MINI ACCESS CHAMBER, 250/300 INT DIA POLYPROPYLENE
- ⑨ POLYPROPYLENE BASE UNIT.
- ⑩ UNIVERSAL INSPECTION CHAMBER (UIC), 475 INT DIA POLYPROPYLENE, MAX DEPTH 1.2m
- ⑪ POLYPROPYLENE BASE UNIT WITH INLET/OUTLETS SIZED TO SUIT CONNECTING PIPEWORK.
- ⑫ NON ENTRY INSPECTION CHAMBER (NIC), TELESCOPIC RAISING PIECE ASSEMBLY INCORPORATING CLASS B SQUARE ACCESS COVER (ST WHEEL LOAD) WITH 350mm RESTRICTED OPENING, MAX DEPTH 3m.
- ⑬ POLYPROPYLENE RAISING PIECES TO SUIT RESTRICTED DEPTH.
- ⑭ POLYPROPYLENE BASE UNIT WITH INLET/OUTLETS SIZED TO SUIT CONNECTING PIPEWORK.
- ⑮ SILT TRAP CHAMBER (ST), WAIN/OSMA 'INTSLOT' POLYPROPYLENE SILT TRAP CHAMBER, 500mm INT DIA, MAX DEPTH 1.2m.
- ⑯ FOR SILT TRAP (ST) DEPTHS GREATER THAN 1.2m THINWALL END CAP WITH 350mm HOLE CUT IN TOP TO FORM RESTRICTED ACCESS. MAX DEPTH 3m.
- ⑰ POLYMER OR DUCTILE IRON COVER AND FRAME TO SUIT SHALLOW INSPECTION CHAMBER, BS EN 124 LOADING CLASS A15
- ⑱ POLYMER OR DUCTILE IRON PEDESTAL DUTY COVER AND FRAME TO BS EN 124 TO SUIT UNIVERSAL INSPECTION CHAMBER, LOADING CLASS A15
- ⑲ DUCTILE IRON MEDIUM DUTY COVER AND FRAME TO BS EN 124 TO SUIT UNIVERSAL INSPECTION CHAMBER, LOADING CLASS B125
- ⑳ CAST IRON SQUARE COVER TO BS EN 124 CLASS B LOADING, AS PART OF TELESCOPIC RAISING PIECE ASSEMBLY OF NON ENTRY TYPE INSPECTION CHAMBER AND INCORPORATING 350mm RESTRICTED ACCESS, LOADING CLASS B125
- ㉑ DUCTILE IRON PEDESTAL DUTY COVER AND FRAME TO BS EN 124 800x600 CLEAR OPENING, LOADING CLASS A15
- ㉒ DUCTILE IRON MEDIUM DUTY COVER AND FRAME TO BS EN 124 800x600 CLEAR OPENING, LOADING CLASS B125

ace
STRUCTURAL & CIVIL ENGINEERS
Bovington House, 191 South Street
Bristol, Avon, BS1 1YU, UK
Tel: 0117 927 2000
Fax: 0117 927 2111

ARCHITECT / COLLAB

**LYSTER GRILLET & HARDING/
T. LEVENS LTD.**

PROJECT
**NEW SPORTS HALL BUILDING
TO CHANCELOR'S SCHOOL
PINE GROVE, BROCKMANS PARK,
HATFIELD, AL9 7BN.**

TITLE
**MISCELLANEOUS DRAINAGE
DETAILS - SHEET 3.**

SCALE: 1:10

DRAWN	DATE
AS	FEB' 2020
DESIGNED	CHECKED
VS	KAR

JOB NO. 20-6690 DWG NO. 303

REVISION

NOTES
1. FOR GENERAL NOTES REFER TO DRAWING 20-6690/300.

NO.	REVISIONS	BY	CHKD	DATE