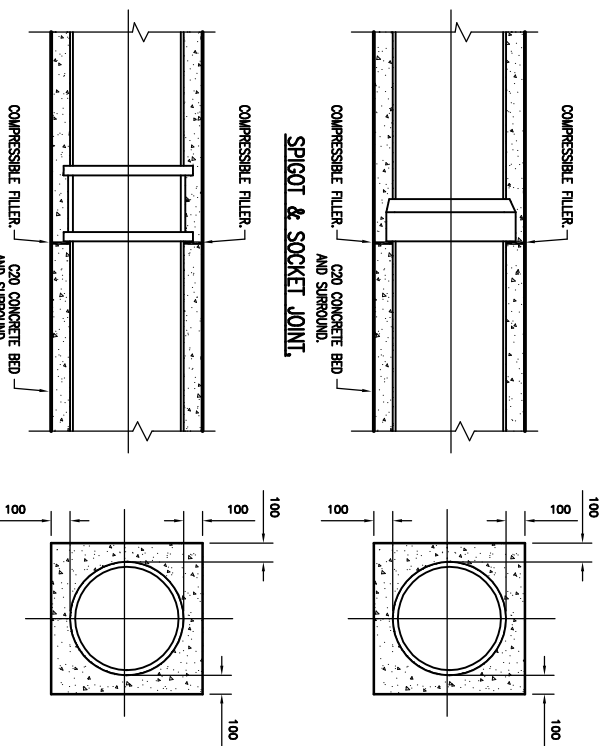
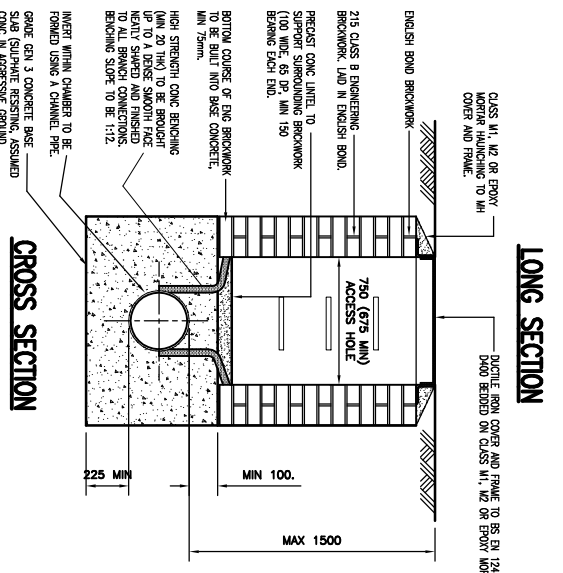
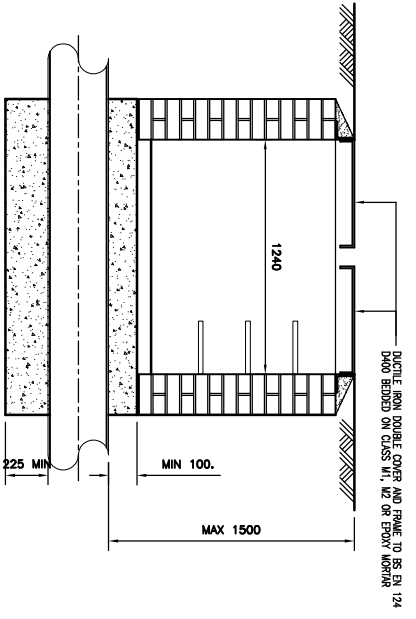
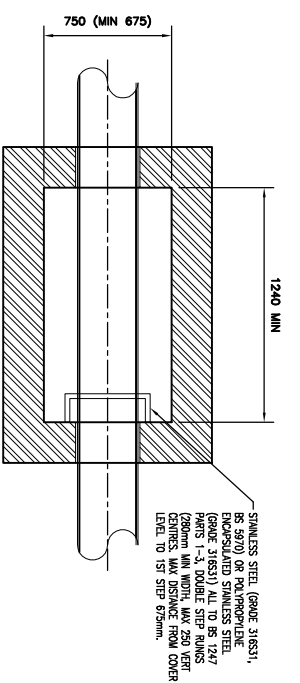


**MANHOLE TYPE B**  
(DEPTH TO SOFFIT 1.51-3.0m)

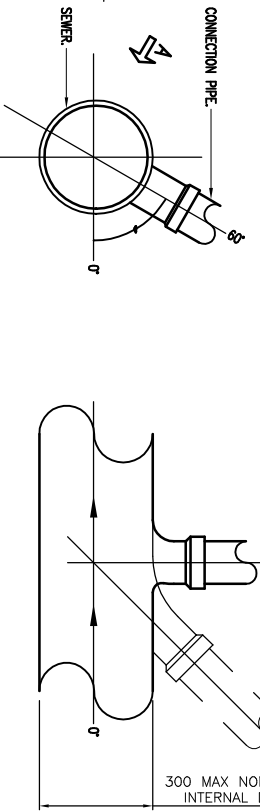


**JOINTS FOR CONCRETE ENCASED PIPES.**



**MANHOLE TYPE C**  
**ANGLIAN WATER PREFERRED BRICK BUILT MANHOLE**  
(MAX DEPTH TO SOFFIT 1.5m)

INTERNAL DIMENSIONS OF CHAMBER NOMINALLY 1240x750 (AS SHOWN). THE MANHOLE SHALL HAVE A REDUCED JOINT WITHIN 600mm OF THE INSIDE FACE OF THE MANHOLE. THE NEXT PIPE SHALL BE A ONE A MIN 225 BENCHING TO EACH SIDE, WITH BRICKWORK CORRELATED DOWN TO 675.



**CONNECTIONS TO SEWER.**  
**B24**  
PLAN VIEW (DIRECTION A).

NOTES  
1. FOR GENERAL NOTES REFER TO DRAWING 20-6690/300.

ROCKER PIPE DETAILS	NOMINAL DIAMETER (mm)	EFFECTIVE (MAX) LENGTH (m)
150 TO 600	0.60	1.00
675 TO 750	0.80	1.25
OVER 750		

MANHOLE SIZE	PIPE DIAMETER (LARGEST IN MH)	DIAMETER OF MH (D)
≤150	1050	1200
225	1200	1350
375-400	1350	1500
500-700	1500	1800
750-900	1800	
<900	The larger of 1800 or Pipe Dia+450	

(ALSO SEE MH SCHEDULE)

REVISIONS	BY	CHKD	DATE

**KEN RUSH ASSOCIATES**  
STRUCTURAL & CIVIL ENGINEERS  
Bovington House, 191 South Street, Braintree, Essex, CM7 2QB.  
Tel: 01376 326789 Fax: 01376 342711

ARCHITECT: COLBERT  
**LYSTER GRILLET & HARDING/  
T. LEVERS LTD.**

PROJECT  
**NEW SPORTS HALL BUILDING  
TO CHANCELOR'S SCHOOL  
PINE GROVE, BROCKHAMNS PARK,  
HATFIELD, AL9 7BN.**

TITLE  
**MISCELLANEOUS DRAINAGE  
DETAILS - SHEET 1 (ROBUST).**

SCALE: 1:20

DESIGNED	DATE	CHECKED
AS	FEB 2020	KAR

SCALE: 1:20

JOB NO.	DWG NO.
20-6690	301

© COPYRIGHT RESERVED AND NOT TO BE USED WITHOUT AUTHORS CONSENT.