

project / site

15 station road, cuffley, herts

client

willow city estates plc

orientation



type

window restrictor details

status

for client approval / planning / building control

revisions

Rev A - SH - 18th Nov 2019
Change restrictor type to wire type
as low profile frames installed by builder
will not accept fixing of standard type
restrictor.

drawn by

Stuart Hancock
RIBA BSc (Hons) Architecture

scale

1:4 @ A4

date

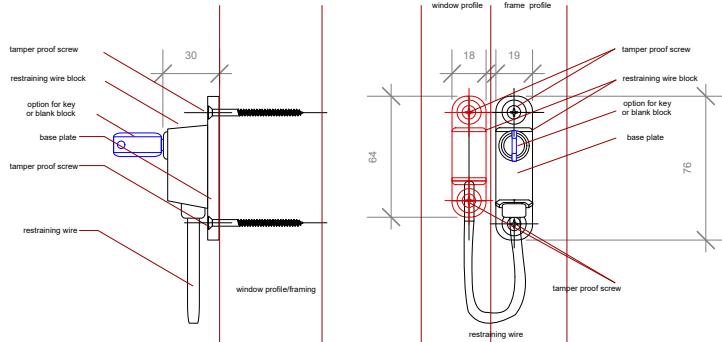
07 jun 2019

dwg no

0/A600/CN/206

rev

A



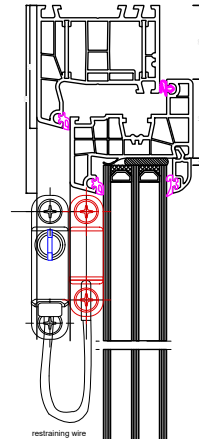
note: actual design or length of mechanism may vary between different manufacturers, the basis of the mechanism remains the same lengths of mechanism are designed specifically to achieve particular opening widths, in this case must be <= 100mm

typical window restrictor mechanism
SIDE ELEVATION

blocks can be mounted side by side or at 90 degrees

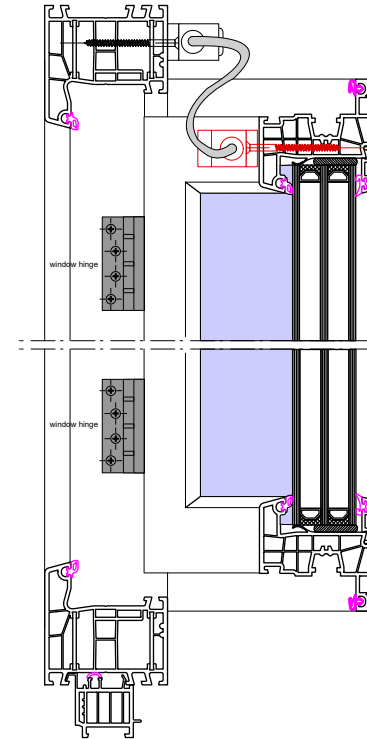
typical window restrictor mechanism
PLAN ELEVATION

Note: window restrictor must be installed according to manufacturers guide min 100mm clear opening. Use Jackloc or jackloc key or permanent restrictor.



typical Upvc frame and window profile
PLAN SECTION-CLOSED

Note: restrictor may be mounted upper/lower the restraining wire will restrict full opening of the window. mechanism below shown fixed to top. it is suggested to mount at bottom for easier removal for fire egress.



typical Upvc frame and window profile
PLAN SECTION-OPEN



window open showing clear opening of <=100mm
PERSPECTIVE VIEW

window restrictor details