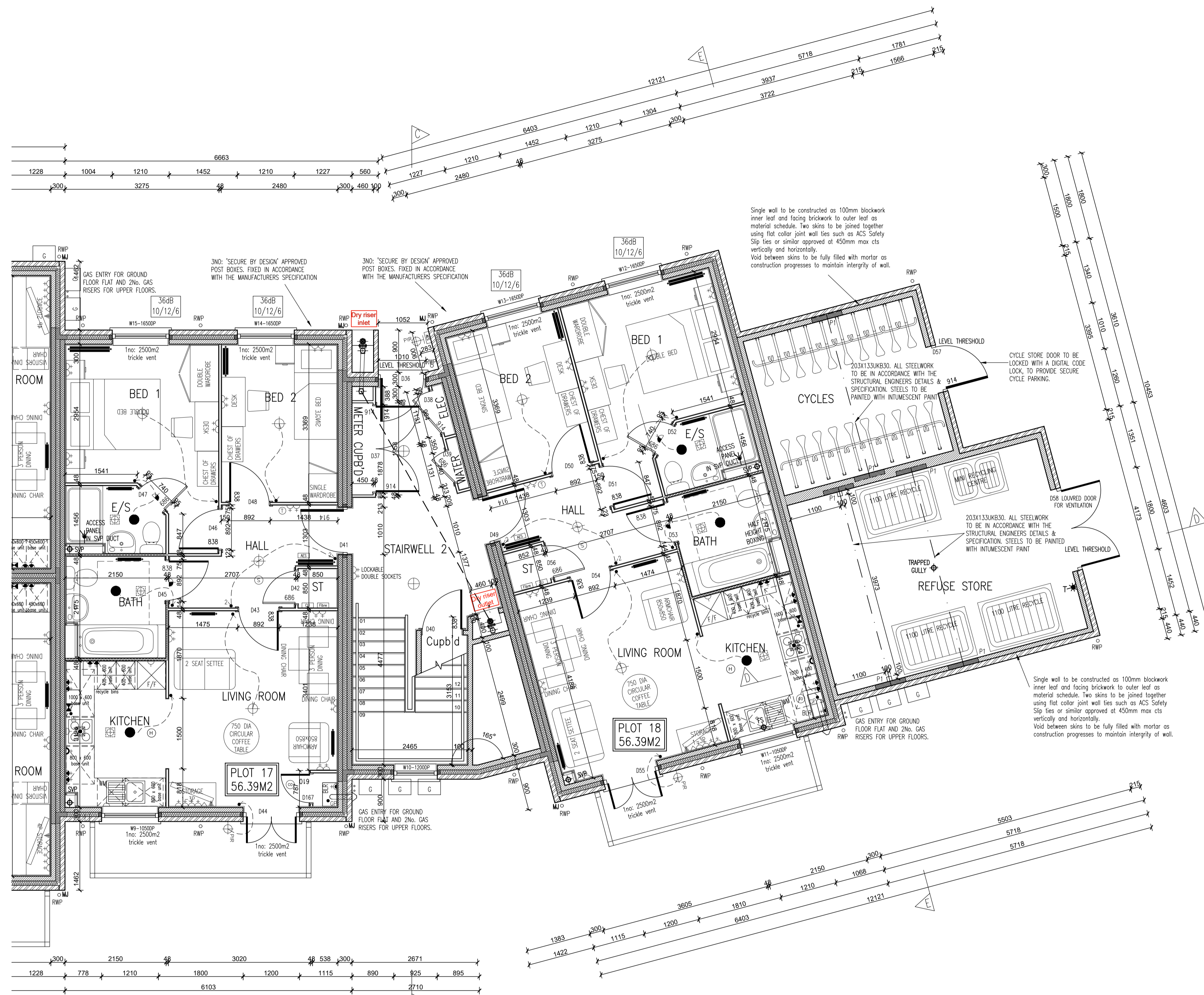


Rev. No.	Date	Amendment	Initial
Rev C1	07.05.19	Construction Issue	PJH
Rev C2	21.05.19	Acoustic insulation added to relevant partitions.	GC
Rev C3	02.07.19	Gas meters and riser re-located as client instruction. Wall tie note added to walls of bin and cycle store.	GC

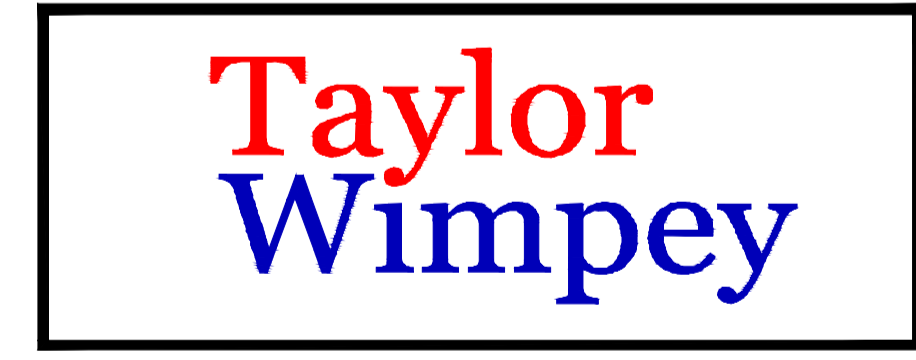


GROUND FLOOR PLAN

BRICK/BLOCKWORK LEGEND	STUDWORK LEGEND	PARTITIONES
External Walls 100mm Facing Brickwork 100mm Blockwork - 7.0m/over 300mm (above ground floor) masonry (600-900mm) for E-W-W-30. PLEASE REFER TO ROBUST STANDARD DETAILS & STRUCTURAL ENGINEERS SPECIFICATION.	STUD PARTITION - 80MM OVERALL THICKNESS COMPOSING 63.5MM TIMBER STUD WITH 12.5MM PLASTERBOARD EITHER SIDE - WHEN REFERRING TO METAL STUD REFER TO T.S. No. 0114/0114 FOR METAL STUD SETTING OUT GUIDANCE. BUTTRESS STUD PARTITION - 125MM OVERALL THICKNESS COMPOSING 75x75MM TIMBER STUD WITH 12.5MM PLASTERBOARD EITHER SIDE & FINISHED WITH 12.5MM PLASTERBOARD (SEE STD DETAIL W13-08-18) ACOUSTIC STUD PARTITION (TO TOWER WHICH SPECIFICATION) WALL HOUR THE RESISTANCE TO STUD PARTITION	P1 = GLASS BLOCK BRICKING BRICK PARTITIONES 600 X 300MM DEEP WITH 400 X 100MM STEEL BEARING PLATE TO ALL STEEL BEARING BEAM ENDS. ALL FININGS TO BE IN ACCORDANCE WITH THE STRUCTURAL ENGINEERS DETAILS / SPECIFICATION.

- NOTES:
- THIS DRAWING MUST NOT BE SCALED
  - THIS DRAWING IS TO BE READ IN CONJUNCTION WITH ALL OTHER PROJECT DRAWINGS
  - ALL DETAILS AND DRAWINGS MUST BE READ IN CONJUNCTION WITH THE 'TM NATIONAL CONSTRUCTION SPECIFICATION FOR HOUSES & LOW RISE APARTMENTS'

SYMBOL	DESCRIPTION
[Symbol]	13 AMP-TWIN SWITCHED SOCKET OUTLET
[Symbol]	13 AMP-TWIN SWITCHED SOCKET OUTLET WITH USB OUTLET
[Symbol]	13 AMP SWITCHED SOCKET OUTLET
[Symbol]	13 AMP SOCKET OUTLET
[Symbol]	13 AMP-TWIN SWITCHED SOCKET OUTLET ABOVE WORKTOP
[Symbol]	13 AMP-TWIN SWITCHED SOCKET OUTLET ABOVE WORKTOP WITH USB OUTLET
[Symbol]	13 AMP SWITCHED SOCKET OUTLET ABOVE WORKTOP
[Symbol]	MULTI GRID SWITCH ABOVE WORKTOP CONTROLLING UNWIRING SOCKETS BELOW WORKTOP & FAN BOOST SWITCH
[Symbol]	13 AMP SPUR UNIT
[Symbol]	13 AMP SWITCHED SPUR UNIT
[Symbol]	ONE-WAY SWITCH
[Symbol]	TWO-WAY SWITCH
[Symbol]	TELEPHONE POINT
[Symbol]	TELEVISION POINT
[Symbol]	FIBRE OPTIC ENTRY POINT
[Symbol]	COOKER SWITCH (150MM ABOVE FFL)
[Symbol]	CONSUMER SERVICE UNIT, SEM RECESSED WHERE REQUIRED (SWITCHES POSITIONED BETWEEN 1350-1400MM ABOVE F.F.L.)
[Symbol]	SHOWER POINT AS SITE SPEC
[Symbol]	CEILING LIGHTING POINT - PENDANT TYPE WITH ENERGY EFFICIENT LAMPS
[Symbol]	CEILING LIGHTING POINT - BATTEN TYPE WITH ENERGY EFFICIENT LAMPS
[Symbol]	RECESSED SPRAWPROOF ENERGY EFFICIENT DOWNLIGHTER OR LED, REFER TO TM SPECIFICATION
[Symbol]	DOWN LIGHTERS, ENERGY EFFICIENT OR LED, REFER TO TM SPECIFICATION
[Symbol]	WALL MOUNTED LIGHTING POINT
[Symbol]	WALL MOUNTED LIGHTING POINT WITH PER SENSOR
[Symbol]	LOW ENERGY TO DIMM LIGHT FITTING ON MOTION SENSORS
[Symbol]	SLASHPROOF IP60 FITTING WITH ENERGY EFFICIENT LAMP (TO BE PWS ABOVE BATHS & SHOWERS)
[Symbol]	CENTRAL HEATING PROGRAMMER & DIM TIMER (Cylinder Only)
[Symbol]	PROGRAMMER TEMPERATURE SENSOR (Cylinder Only)
[Symbol]	PROGRAMMABLE ROOM THERMOSTAT
[Symbol]	DECENTRALISED CONTINUOUS RUNNING EXTRACT FAN
[Symbol]	REGRILLING COOKER HOOD
[Symbol]	3 POLE ISOLATOR SWITCH FOR EXTRACT WIRING WITH FAN SYMBOL
[Symbol]	CENTRAL HEATING WIRING JUNCTION BOX
[Symbol]	RADIATOR
[Symbol]	SMOKE DETECTOR
[Symbol]	HEAT DETECTOR
[Symbol]	CO ALARM TO BE WALL MOUNTED AT A HEIGHT GREATER THAN THE HEIGHT OF ANY DOOR OR WINDOW OPENING BUT AT LEAST 150MM FROM THE CEILING, AT A HORIZONTAL DISTANCE OF BETWEEN 1-3m FROM THE EDGE OF THE FUEL BURNING APPLIANCE. ALARM NOT TO BE FITTED IN A STORE/CLIMBER, DIRECTLY ABOVE A SINK/COOKER OR NEXT TO A DOOR/PANTRY OR ANYWHERE THAT COULD BE AFFECTED BY GRAVITY. NOTE: IN ALL CASES LOCKING TO BE AGREED WITH THE GAS SAFE REGISTERED ENGINEER.
[Symbol]	SHOWER HEAD
[Symbol]	GAS TAP
[Symbol]	LOCKABLE TAP TO BIN STORE
[Symbol]	AUDIO ENTRY SYSTEM TO SPECIALIST DESIGN



**INNOVATE**  
architectural services

Client:  
TAYLOR WIMPEY NORTH THAMES

Project:  
CHEQUERSFIELD  
WELWYN GARDEN CITY

Drawing:  
BLOCK B  
GROUND FLOOR PLAN  
SHEET 2 OF 2

Scale: 1:50 @ A1  
Date: APRIL 2018  
Drawn By: GC  
Checked By: GC  
Drawing No: 21188-BlockB-22  
Rev. No: C3

Taylor Wimpey	
Health, Safety & Environmental Information	
Extracted from the Significant Risk Register of the Taylor Wimpey AA32 Product Risk Assessment Document	
1. Increased risk of fall when temporary boarding & joists are removed from standard opening when filling gullies	
NOTE: Contractors to discuss above risk with the Site Manager in conjunction with the TMSSE Manual before commencing work	
All works must be carried out by a competent contractor working to an agreed safe system of work which reflects the controls highlighted above	

THIS DRAWING IS A COPYRIGHT  
All dimensions to be checked on site or in the workshop before work commences.  
Only figured dimensions to be worked to. Any discrepancies to be reported to the Architect.