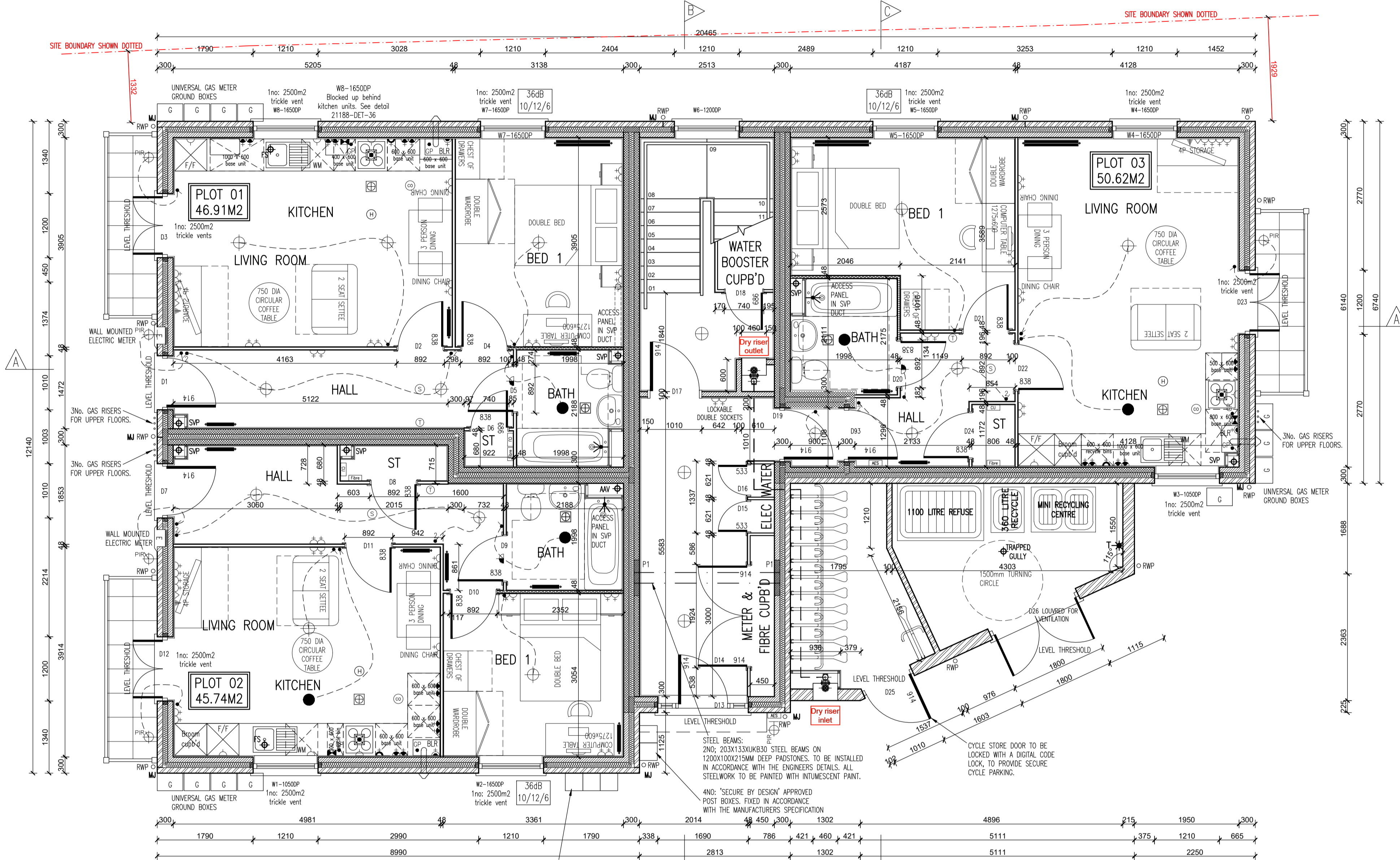
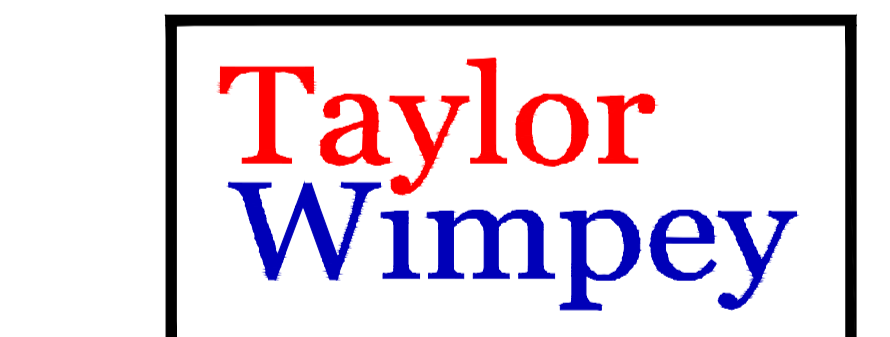


Rev. No.	Date	Amendment	Initial
Rev C1	07.05.19	Construction Issues	PJH
Rev C2	14.05.19	D14 opening increased to suit 914 doors.	PJH
Rev C3	21.05.19	Acoustic insulation added to relevant partitions.	GC
Rev C4	04.07.19	Reference to detail added to window W8.	GC



GROUND FLOOR PLAN

SYMBOL	DESCRIPTION
[Symbol]	13 AMP F/WN SWITCHED SOCKET OUTLET
[Symbol]	13 AMP SWITCHED SOCKET OUTLET WITH USB OUTLET
[Symbol]	13 AMP SWITCHED SOCKET OUTLET
[Symbol]	13 AMP SOCKET OUTLET
[Symbol]	13 AMP F/WN SWITCHED SOCKET OUTLET ABOVE WORKTOP
[Symbol]	13 AMP F/WN SWITCHED SOCKET OUTLET ABOVE WORKTOP WITH USB OUTLET
[Symbol]	13 AMP SWITCHED SOCKET OUTLET ABOVE WORKTOP
[Symbol]	MULTI DRIP SWITCH ABOVE WORKTOP CONTROLLING DOWNLIGHT SOCKETS BELOW WORKTOP & FAN BOOST SWITCH
[Symbol]	13 AMP SPUR UNIT
[Symbol]	13 AMP SWITCHED SPUR UNIT
[Symbol]	ONE WAY SWITCH
[Symbol]	TWO WAY SWITCH
[Symbol]	TELEPHONE POINT
[Symbol]	TELEVISION POINT
[Symbol]	FIBRE OPTIC ENTRY POINT
[Symbol]	COOKER SWITCH (100MM ABOVE FFL)
[Symbol]	CONSUMER SERVICE UNIT, SEM RECESSED WHERE REQUIRED (SWITCHES POSITIONED BETWEEN 1200-1600MM ABOVE F.F.L.)
[Symbol]	SHOWER POINT AS SITE SPEC
[Symbol]	CEILING LIGHTING POINT - PENDANT TYPE WITH ENERGY EFFICIENT LAMPS
[Symbol]	CEILING LIGHTING POINT - BATTEN TYPE WITH ENERGY EFFICIENT LAMPS
[Symbol]	RECESSED SPLASHPROOF ENERGY EFFICIENT DOWNLIGHTER OR LED, REFER TO TW SPECIFICATION
[Symbol]	DOWN LIGHTERS, ENERGY EFFICIENT OR LED, REFER TO TW SPECIFICATION
[Symbol]	WALL MOUNTED LIGHTING POINT
[Symbol]	WALL MOUNTED LIGHTING POINT WITH PIR SENSOR
[Symbol]	LOW ENERGY 2D DRUM LIGHT FITTING ON MOTION SENSORS
[Symbol]	SPLASHPROOF FROG FITTING WITH ENERGY EFFICIENT LAMP (TO BE USED ABOVE BATHS & SHOWERS)
[Symbol]	CENTRAL HEATING PROGRAMMER & DIMMER (Colour Only)
[Symbol]	PROGRAMMABLE ROOM THERMOSTAT (Colour Only)
[Symbol]	PROGRAMMABLE ROOM THERMOSTAT
[Symbol]	DECENTRALISED CONTINUOUS RUNNING EXTRACT FAN
[Symbol]	RECYCLING COOKER HOOD
[Symbol]	3 POLE ISOLATOR SWITCH FOR EXTRACT MARKED WITH FAN SYMBOL
[Symbol]	CENTRAL HEATING WIRING JUNCTION BOX
[Symbol]	SMOKE DETECTOR
[Symbol]	HEAT DETECTOR
[Symbol]	CO ALARM, TO BE WALL MOUNTED, AT A HEIGHT GREATER THAN THE HEIGHT OF ANY DOOR OR WINDOW OPENING BUT AT LEAST 150mm FROM THE CEILING, AT A HORIZONTAL DISTANCE OF BETWEEN 1-3m FROM THE EDGE OF THE FIRE HEARING APPLIANCE, ALARM NOT TO BE FITTED IN A STORE/CUPBOARD, DIRECTLY ABOVE A DOWNLIGHTER OR NEXT TO A DOWNLIGHTER OR ANYWHERE THAT COULD BE AFFECTED BY DRAUGHTS. NOTE: ALL CASES LOCATING TO BE LABELED WITH THE GAS RATE SPECIFIED ON LABEL
[Symbol]	SHOWER HEAD
[Symbol]	GAS POINT
[Symbol]	LOCKABLE AP TO BIN STORE
[Symbol]	AUDIO ENTRY SYSTEM TO SPECIALIST DESIGN



INNOVATE

architectural services

Client: TAYLOR WIMPEY NORTH THAMES

Project: CHEQUERSFIELD WELWYN GARDEN CITY

Drawing: BLOCK A GROUND FLOOR PLAN

Scale: SCALE 1:50 @ A1 Date: APRIL 2018

Drawn By: PJH Checked By: GC Drawing No: 21188-BlockA-21 Rev. No: C4

CAD Ref: C:\TAYLOR WIMPEY NORTH THAMES\CHEQUERSFIELD

Taylor Wimpey
Health, Safety & Environmental Information
Extracted from the Significant Risk Register of the Taylor Wimpey A&Z Product Risk Assessment Document

1. Increased risk of fall when temporary boarding & joists are removed from street-level opening when being installed.

NOTE: Contractors to discuss above risk with the Site Manager in conjunction with the T&WSE Manual before commencing work.

THIS DRAWING IS A COPYRIGHT
All dimensions to be checked on site or in the workshop before work commences.
Only figured dimensions to be worked to. Any discrepancies to be reported to the Architect.

BRICK/BLOCKWORK LEGEND

[Symbol]	External Walls
[Symbol]	103mm FACING BRICKWORK
[Symbol]	100mm BLOCKWORK - 7.0N/m ² (GROUND FLOOR) & 1.0N/m ² (FABRIC GROUND FLOOR) (600-800kg/m ³) FOR 4-14-30. RIDGE REFER TO ROOFING DRAWING DETAILS & STRUCTURAL ENGINEERS SPECIFICATION.
[Symbol]	Party Walls

STUDWORK LEGEND

[Symbol]	STUD PARTITION - 80MM OVERALL THICKNESS COMPOSING 63.5MM TIMBER STUD WITH 12.5MM PLASTERBOARD EITHER SIDE - WHEN REFERRED TO METAL STUD REFER TO IS. No. 0114/04/14 FOR METAL STUD SETTING OUT GUIDANCE
[Symbol]	BUTTERESS STUD PARTITION - 125MM OVERALL THICKNESS COMPOSING 75x75MM TIMBER STUD WITH 12.5MM PLASTERBOARD EITHER SIDE & FINISHED WITH 12.5MM PLASTERBOARD (SEE STD DETAIL W13-06-18)
[Symbol]	ACOUSTIC STUD PARTITION (TO TAYLOR WIMPEY SPECIFICATION)
[Symbol]	HALF HOUR FIRE RESISTANCE TO STUD PARTITION

PAISTONES

[Symbol]	P1 - CLASS B ENGINEERING BRICK PAISTONES 660 X 300MM DEEP WITH 440 X 10MM STEEL BEARING PLATE TO ALL STEEL BEARING BEAM ENDS. ALL FININGS TO BE IN ACCORDANCE WITH THE STRUCTURAL ENGINEERS DETAILS / SPECIFICATION.
----------	----------------------------------------------------------------------------------------------------------------------------------------------------------------------------------------------------------------------

- NOTES
- THIS DRAWING MUST NOT BE SCALED
 - THIS DRAWING IS TO BE READ IN CONJUNCTION WITH ALL OTHER PROJECT DRAWINGS
 - ALL DETAILS AND DIMENSIONS MUST BE READ IN CONJUNCTION WITH THE TW NATIONAL CONSTRUCTION SPECIFICATION FOR HOUSES & LOW RISE APARTMENTS.