

### KEY

**TOPOGRAPHICAL KEY**

**NATURAL**

**GENERAL**

**PIPE MATERIALS**

**LEVELS**

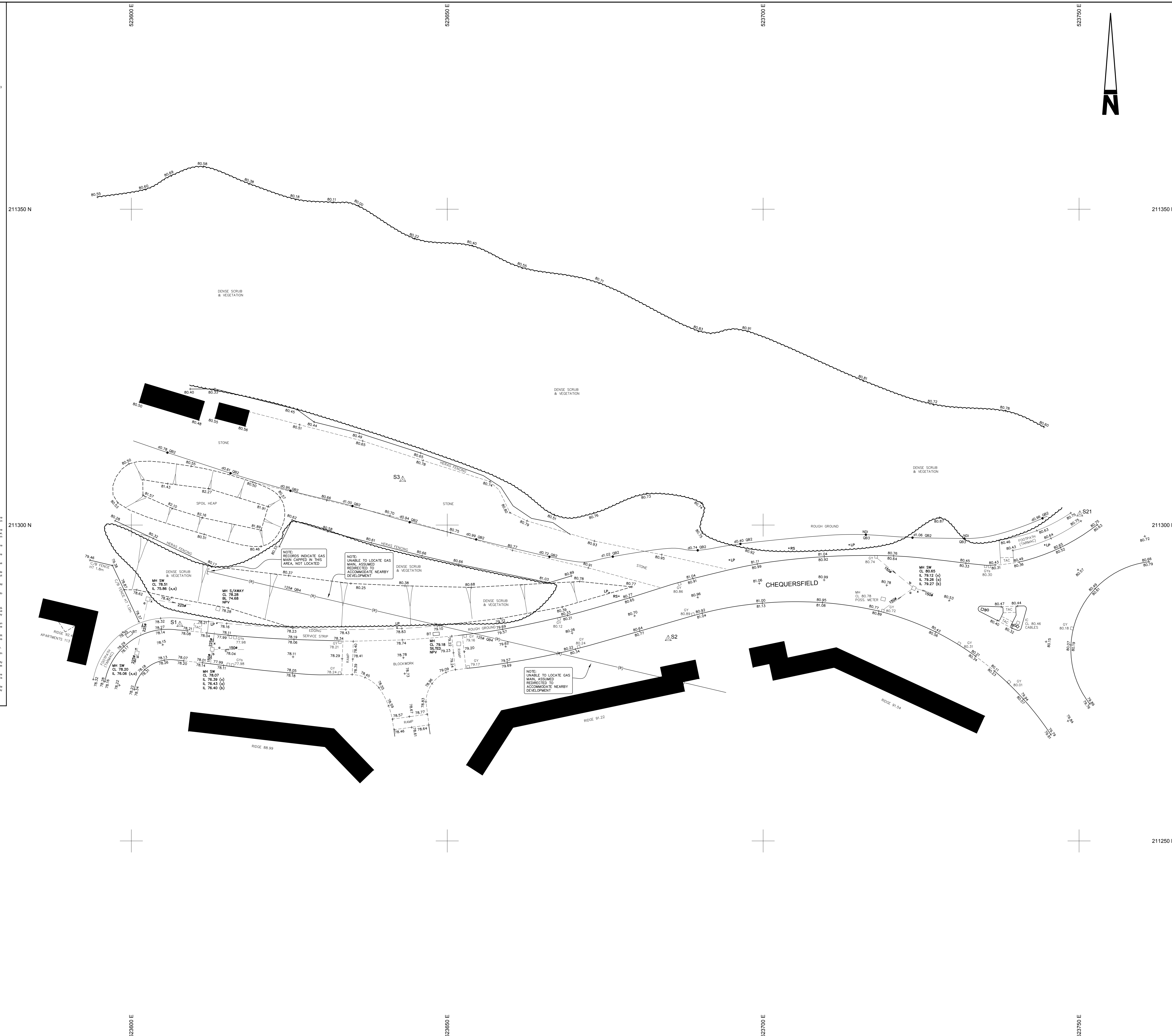
**LINESTYLE**

**SERVICE TYPE**

**DEPTHS**

**CAUTIONARY NOTES**

**ALWAYS EXERCISE CAUTION WHEN EXCAVATING.**



- Notes:**
- GRID LEVELS BASED ON ORDNANCE DATUM, DERIVED FROM THE NATIONAL SPITS NETWORK. LOCAL SCALE FACTOR REMOVED.
  - TREE AND HEDGE SPECIES HAVE BEEN IDENTIFIED AS ACCURATELY AS POSSIBLE BUT SHOULD BE CROSS CHECKED IN CRITICAL AREAS.
  - THIS SURVEY SHOULD ALWAYS BE READ IN CONJUNCTION WITH THE DESKTOP UTILITY REPORT THAT WAS CARRIED OUT AS A PREREQUISITE TO THIS DETECTION SURVEY.

Coordinate Table				
Station	Description	Eastings	Northings	Level
S1	SURVEY NAIL	523607.679	211284.220	78.264
S2	SURVEY NAIL	523604.973	211281.994	80.389
S21	SURVEY NAIL	523755.116	211301.704	80.781
S3	SURVEY NAIL	523642.947	211307.194	80.787

**DETECTION SURVEY REPORT**

**GENERAL**

The requirement of the utility survey was to detect and locate the HV cable along Chequersfield.

**DESKTOP UTILITY REPORT**

Site surveys with historical electricity record information. As per PAS 128:2014 this record information is over 90 days old and is therefore classified as historical and must be referred with extreme caution. There is no guarantee of the completeness and accuracy of this information.

**ELECTRICITY**

The HV cable was located with electronically derived depths recorded to quality level Q2.

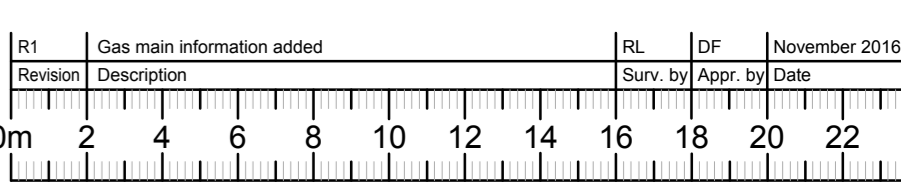
**GAS**

Unable to locate 125mm diameter PE gas main within survey boundary using GPR. Assumed to be located in the vicinity of the existing gas main. Dense vegetation limited GPR in some areas. The embankment is made ground and increases the depth of the gas main from its original configuration. The diameter of the service and its depth under the embankment may combine to reduce the GPR's capability to locate it. However no indicators of the service was identified beyond the embankment where ground levels are reduced.

SEE CAUTIONARY NOTES WITHIN THE UTILITY KEY

PAS 128:2014 Quality Level Guide			
Quality Level	Description	Accuracy	Accuracy
Q1a	A utility is expected to exist but cannot be detected (GAS, SV, HV)	Location	Location
Q2	Horizontal location only using one geophysical technique	± 200mm Horizontal	± 200mm Horizontal
Q2b	Horizontal and vertical location only using one geophysical technique	± 200mm or ± 40% depth	± 200mm or ± 40% depth
Q3	Horizontal and vertical location only using two geophysical techniques	± 100mm or ± 10% of depth wherever a profile	± 100mm or ± 10% of depth wherever a profile
Q4	Service verified in an open excavation, inside an inspection chamber, above ground, or at the point the service enters the ground	± 50mm Horizontal	± 50mm Vertical

Desktop Utility Records		
Utility Type	Provider Details	Data Acquired
Electricity	UK Power Networks	20/02/16 (Historical)
Gas	Network Gas	05/02/16 (Historical)



**mksurveys**

11000 565561  
01453 565575  
0116 2848122  
01453 241192

Milton Keynes  
East Midlands  
West Midlands  
Northampton

enquiries@mksurveys.co.uk  
01453 565575  
enquiries@mksurveys.co.uk  
enquiries@mksurveys.co.uk  
enquiries@mksurveys.co.uk

www.mksurveys.com www.surveys4bim.co.uk

The Incidental Land Company Ltd.

Land at Chequersfield  
Welwyn Garden City  
Hertfordshire

Targeted HV Cable, Gas Main and Topographical Survey

Scale	Sheet Size	Sheet Number	Date
1:200	A0	1	September 2016
Project Number:	22894	Rev: 1	Surveyed By: M/JW
			Approved By: AJ / RPE / GL