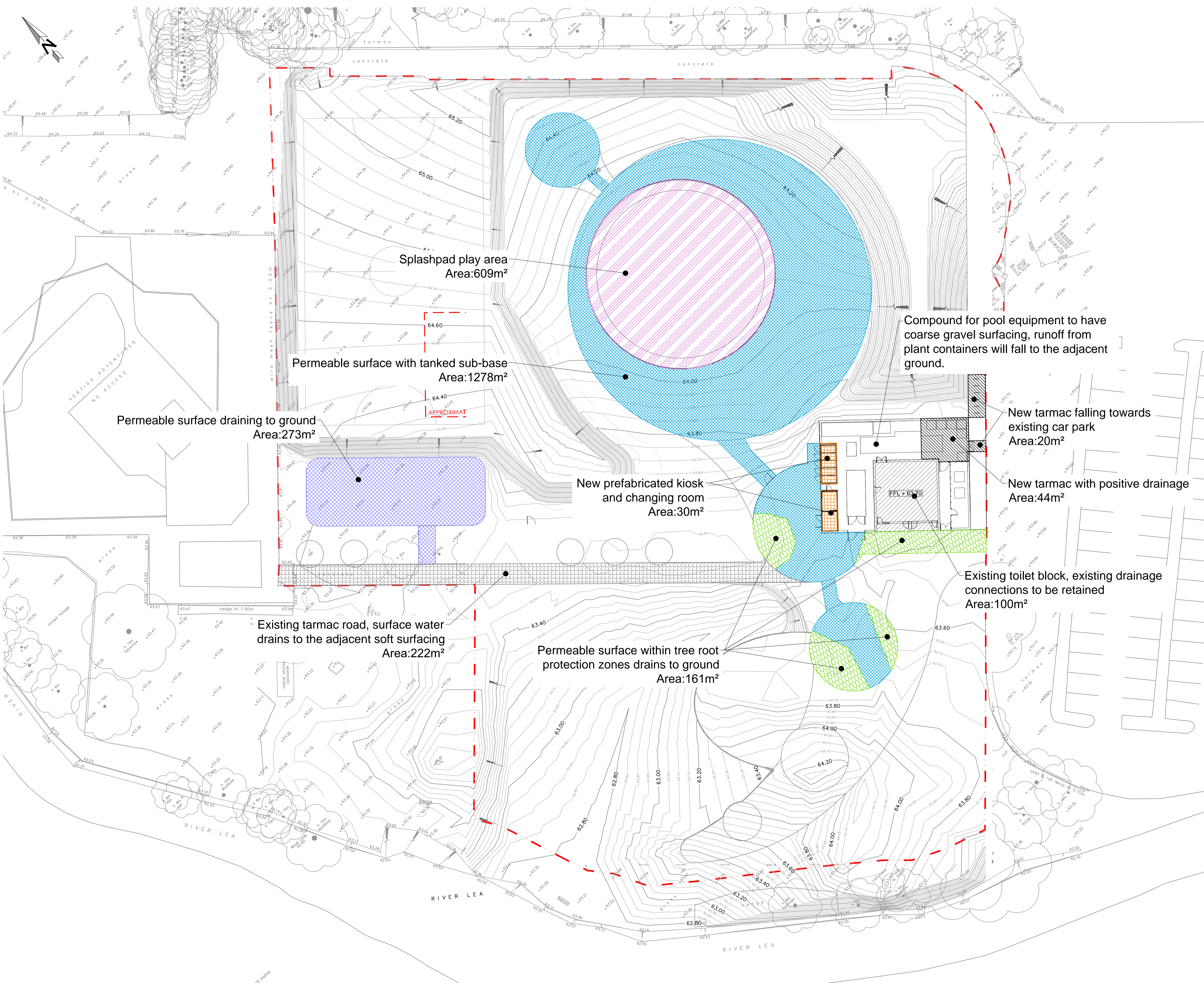


GENERAL NOTES

1. THIS DRAWING IS TO BE READ IN CONJUNCTION WITH ALL RELEVANT ARCHITECTS, ENGINEERS AND SPECIALIST DRAWINGS AND SPECIFICATIONS
2. DO NOT SCALE FROM THIS DRAWING IN EITHER PAPER OR DIGITAL FORM. USE WRITTEN DIMENSIONS ONLY.



Splashpad play area
Area:609m²

Permeable surface with tanked sub-base
Area:1278m²

Permeable surface draining to ground
Area:273m²

New prefabricated kiosk and changing room
Area:30m²

Compound for pool equipment to have coarse gravel surfacing, runoff from plant containers will fall to the adjacent ground.

New tarmac falling towards existing car park
Area:20m²

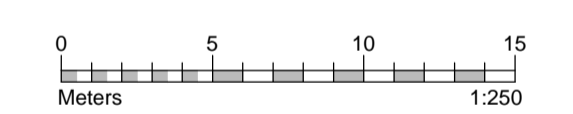
New tarmac with positive drainage
Area:44m²

Existing toilet block, existing drainage connections to be retained
Area:100m²

Existing tarmac road, surface water drains to the adjacent soft surfacing
Area:222m²

Permeable surface within tree root protection zones drains to ground
Area:161m²

Positively Drained Areas	
Description	Area (m ²)
Splashpad	609
Tanked Play Surface	1278
New Kiosks	30
Tarmac Plant Area	44
Total	1961



NOT FOR CONSTRUCTION

T1 10.05.19 Issued for Tender JC TG
Rev Date Description Drawn Check

conisbee Consulting Structural Engineers
Consulting Civil Engineers
London • Cambridge • Norwich
1-5 Offord St London N1 1DH
Telephone 020 7700 6666
www.conisbee.co.uk

Drawing Status
PRELIMINARY
Project
**STANBOROUGH PARK
SPLASHLANDS**
Title
CATCHMENT PLAN
Drawing No
171116-CON-X-00-DR-C-1010

Date
MAY 2019
Scale
1:250@A1
Drawn
JC
Engineer
TG
Project No
171116
Revision
P1