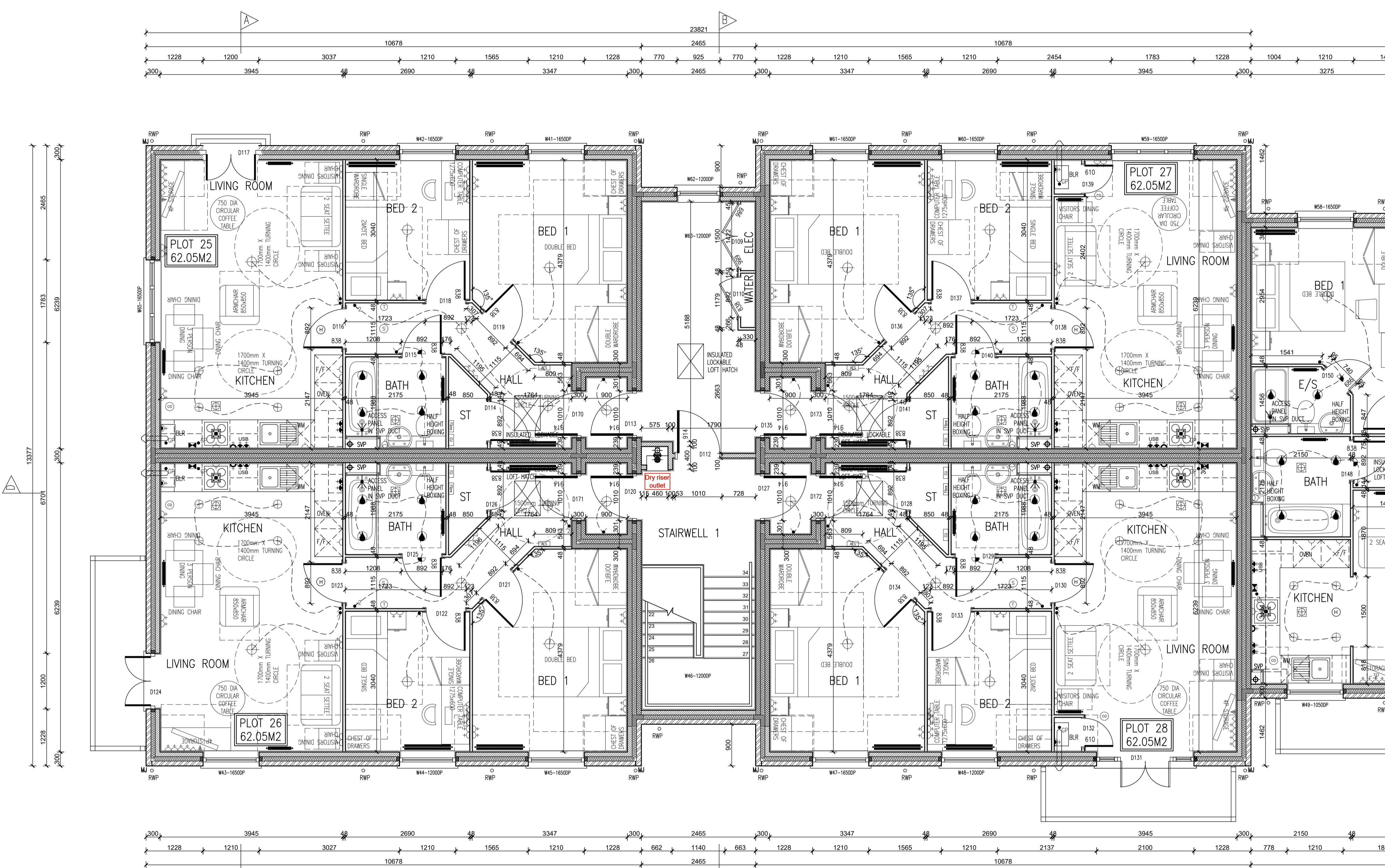
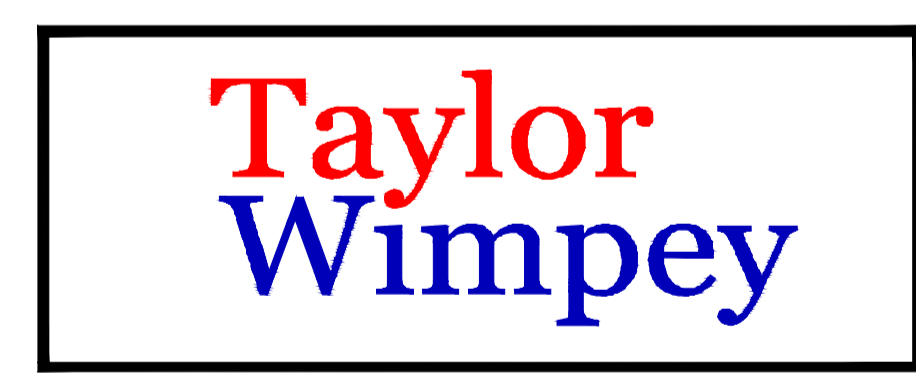


Rev. No.	Date	Amendment	Initial
Rev. T1	20.07.18	Tender Issue	GC
Rev. T2	19.09.18	Block strengths updated to accord with the Structural Engineers comments.	PJH
Rev. T3	27.11.18	Balcony removed from Plot 25 and replaced with Juliette balcony. Lobbies added to Plots 25-28. Fibre optic entry points indicated. Window added to Plot 25 living room.	PJH



SYMBOL	DESCRIPTION
[Symbol]	13 AMP TRIP SWITCHED SOCKET OUTLET
[Symbol]	13 AMP TRIP SWITCHED SOCKET OUTLET WITH USB OUTLET
[Symbol]	13 AMP SWITCHED SOCKET OUTLET
[Symbol]	13 AMP SOCKET OUTLET
[Symbol]	13 AMP TRIP SWITCHED SOCKET OUTLET ABOVE WORKTOP
[Symbol]	13 AMP TRIP SWITCHED SOCKET OUTLET ABOVE WORKTOP WITH USB OUTLET
[Symbol]	13 AMP SWITCHED SOCKET OUTLET ABOVE WORKTOP
[Symbol]	MULTI SPEED SWITCH ABOVE WORKTOP CONTROLLING UNDERCABINETS BELOW WORKTOP & FAN BOOST SWITCH
[Symbol]	13 AMP SPUR UNIT
[Symbol]	13 AMP SWITCHED SPUR UNIT
[Symbol]	ONE WAY SWITCH
[Symbol]	TWO WAY SWITCH
[Symbol]	TELEPHONE POINT
[Symbol]	TELEVISION POINT
[Symbol]	FIBRE OPTIC ENTRY POINT
[Symbol]	COOKER SWITCH (1000MM ABOVE FFL)
[Symbol]	CONSUMER SERVICE UNIT, SEM RECESSED WHERE REQUIRED (SWITCHES POSITIONED BETWEEN 1550-1850MM ABOVE F.F.L.)
[Symbol]	SWITCH POINT AS SPEC
[Symbol]	CEILING LIGHTING POINT - PENDANT TYPE WITH ENERGY EFFICIENT LAMPS
[Symbol]	CEILING LIGHTING POINT - BATTEN TYPE WITH ENERGY EFFICIENT LAMPS
[Symbol]	RECESSED SPLASHPROOF ENERGY EFFICIENT DOWNLIGHTER OR LED, REFER TO TM SPECIFICATION
[Symbol]	DOWN LIGHTERS, ENERGY EFFICIENT OR LED, REFER TO TM SPECIFICATION
[Symbol]	WALL MOUNTED LIGHTING POINT
[Symbol]	WALL MOUNTED LIGHTING POINT WITH PR SWITCH
[Symbol]	CEILING MOUNTED BULKHEAD FITTING
[Symbol]	SPLASHPROOF PROF FITTING WITH ENERGY EFFICIENT LAMP (TO BE FITTED ABOVE BATH & SHOWERS)
[Symbol]	CENTRAL HEATING PROGRAMMER & DIM TIMER (Cylinder Only)
[Symbol]	PROGRAMMER TEMPERATURE SENSOR (Cylinder Only)
[Symbol]	DECENTRALISED CONTINUOUS RUNNING EXTRACT FAN
[Symbol]	RECYCLATING COOKER HOOD
[Symbol]	3 POLE ISOLATOR SWITCH FOR EXTRACT MARKED WITH FAN SYMBOL
[Symbol]	CENTRAL HEATING WIRING JUNCTION BOX
[Symbol]	RADIATOR
[Symbol]	SMOKE DETECTOR
[Symbol]	HEAT DETECTOR
[Symbol]	CO ALARM, TO BE WALL MOUNTED, AT A HEIGHT GREATER THAN THE HEIGHT OF ANY DOOR OR WINDOW OPENING BUT AT LEAST 150MM FROM THE CEILING, AT A HORIZONTAL DISTANCE OF BETWEEN 5-3m FROM THE EDGE OF THE FUEL BURNING APPLIANCE. ALARM NOT TO BE FITTED IN A STORE/CORRIDOR, DIRECTLY ABOVE A SINK/COOKER OR NEXT TO A DOOR/WINDOW OR ANYWHERE THAT COULD BE AFFECTED BY DRAUGHTS. NOTE: IN ALL CASES, LOCATIONS TO BE AGREED WITH THE GAS SAFE REGISTERED ENGINEER.
[Symbol]	SHOWER HEAD
[Symbol]	GAS POINT
[Symbol]	LOOKABLE EXTERNAL TAP
[Symbol]	AUDIO ENTRY SYSTEM TO SPECIALIST DESIGN



Client: TAYLOR WIMPEY NORTH THAMES

Project: CHEQUERSFIELD WELWYN GARDEN CITY

Drawing: BLOCK B SECOND FLOOR PLAN SHEET 1 OF 2

Scale: SCALE 1:50 @ A1
 Date: APRIL 2018
 Drawn By: GC
 Checked By: GC
 Drawing No: 21188-BlockB-25
 Rev. No: T3

GC Ref: C:\TAYLOR WIMPEY NORTH THAMES\CHEQUERSFIELD

THIS DRAWING IS A COPYRIGHT
 All dimensions to be checked on site or in the workshop before work commences.
 Only figured dimensions to be worked to. Any discrepancies to be reported to the Architect.

BRICK/BLOCKWORK LEGEND	
[Symbol]	External Walls
[Symbol]	100mm FACED BRICKWORK
[Symbol]	100mm BLOCKWORK - 7.0N/m ² MEDIUM DENSE SOLID BLOCKWORK TO GROUND FLOOR, 3.0N/m ² LIGHTWEIGHT CONCRETE BLOCKWORK TO 1ST & 2ND FLOORS. VERIFY TO BE IN ACCORDANCE WITH THE CONSTRUCTION SPECIFICATION / STRUCTURAL ENGINEERS DETAILS.
Party Walls	
[Symbol]	100mm BLOCKWORK - 7.0N/m ² (GROUND FLOOR) & 3.0N/m ² (ABOVE GROUND FLOOR) ARCHITECT (800-800mm) FOR E-W. PLEASE REFER TO ROBERT SIMMONS DETAILS & STRUCTURAL ENGINEERS SPECIFICATION.

- NOTES:
- THIS DRAWING MUST NOT BE SCALED
 - THIS DRAWING IS TO BE READ IN CONJUNCTION WITH ALL OTHER PROJECT DRAWINGS.
 - ALL DETAILS AND DRAWINGS MUST BE READ IN CONJUNCTION WITH THE TM NATIONAL CONSTRUCTION SPECIFICATION FOR HOUSES & LOW RISE APARTMENTS.

Taylor Wimpey
 Health, Safety & Environmental Information
 Extracted from the Significant Risk Register of the Taylor Wimpey AA32 Product Risk Assessment Document
 1. Increased risk of fall when temporary boarding & joists are removed from stairwell opening when fitting staircase
 NOTE: Contractors to discuss above risk with the Site Manager in conjunction with the TMSSE Manual before commencing work
 All works must be carried out by a competent contractor working to an agreed safe system of work which reflects the controls highlighted above