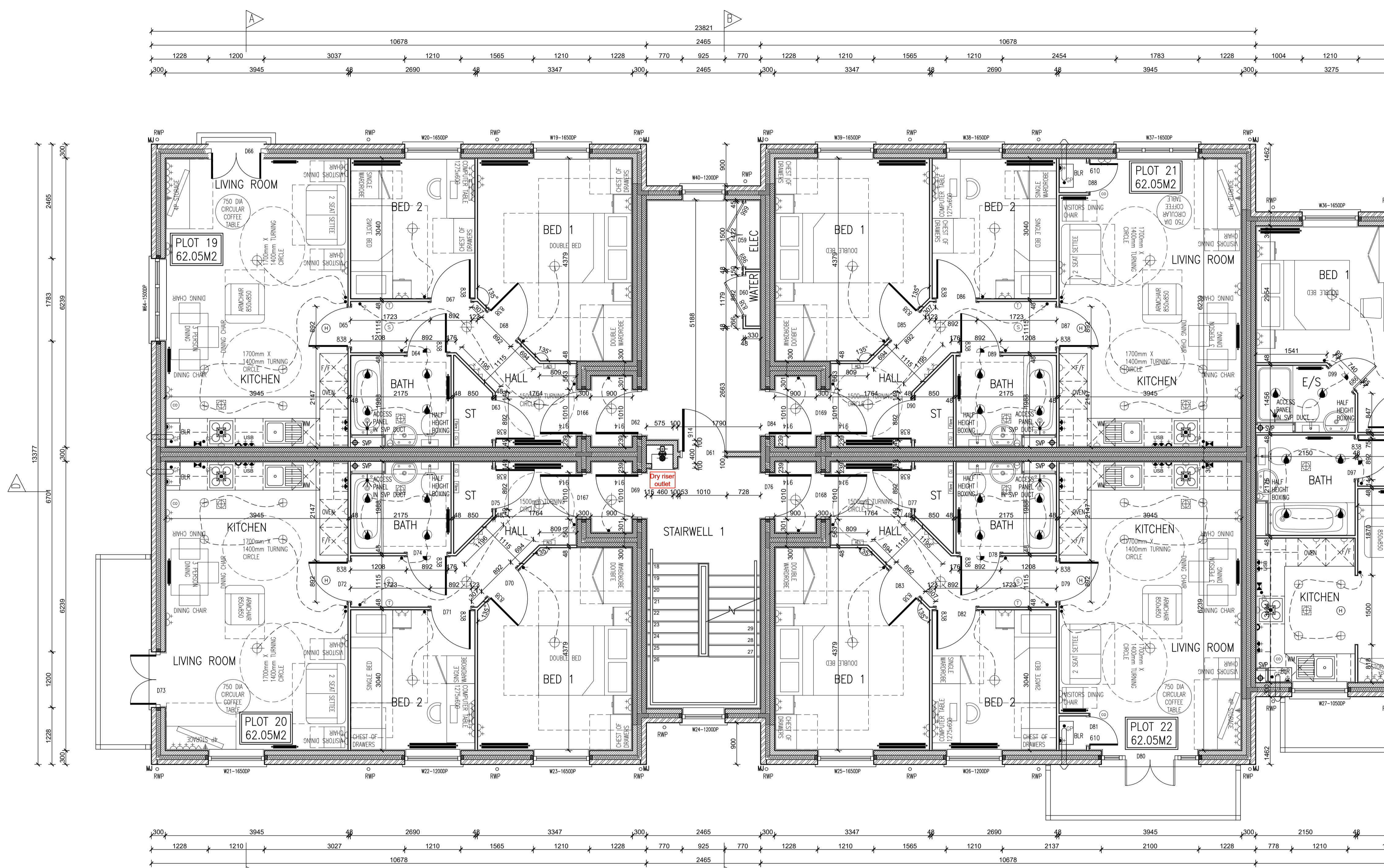


Rev. No.	Date	Amendment	Initial
Rev. T1	20.07.18	Tender Issue	GC
Rev. T2	19.09.18	Block strengths updated to accord with the Structural Engineers comments.	PJH
Rev. T3	27.11.18	Balcony removed from Plot 19 and replaced with Juliette balcony. Lobbies added to Plots 19-22. Fibre optic entry point indicated. Window added to Plot 19 living room.	PJH



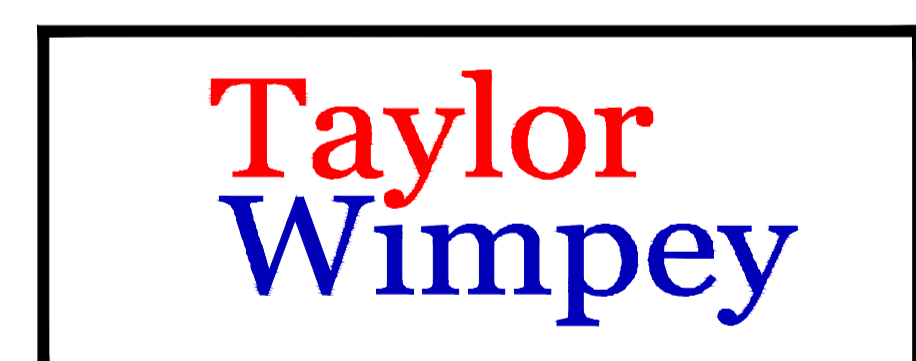
FIRST FLOOR PLAN

BRICK/BLOCKWORK LEGEND	
	External Walls
	100mm Facing Brickwork
	100mm Blockwork - 7.0N/mm ² MEDIUM DENSE SOLID BLOCKWORK TO GROUND FLOOR. 3.0N/mm ² LIGHTWEIGHT CONCRETE BLOCKWORK TO 1ST & 2ND FLOORS. DENSITY TO BE IN ACCORDANCE WITH THE CONSTRUCTION SPECIFICATION / STRUCTURAL ENGINEERS DETAILS.
	Party Walls
	100mm Blockwork - 7.0N/mm ² (GROUND FLOOR) & 3.0N/mm ² (ABOVE GROUND FLOOR) ARCHITECT (600-800kg/m ³) FOR E-WALLS. PLEASE REFER TO ROBUST STANDARD DETAILS & STRUCTURAL ENGINEERS SPECIFICATION.

STUCCO LEGEND	
	STUD PARTITION - 80MM OVERALL THICKNESS COMPOSITE 63.5MM TIMBER STUD WITH 12.5MM PLASTERBOARD EITHER SIDE - WHEN REFERRED TO METAL STUD REFER TO TB No. 0114/04/14 FOR METAL STUD SETTING OUT GUIDANCE.
	BUTRESS STUD PARTITION - 125MM OVERALL THICKNESS COMPOSITE 75x75MM TIMBER STUD WITH 12.5MM PLASTERBOARD EITHER SIDE & FINISHED WITH 12.5MM PLASTERBOARD (SEE STD DETAIL W13-08-18)
	ACOUSTIC STUD PARTITION (TO TACOS MURPHY SPECIFICATION)
	HALF HOUR FIRE RESISTANCE TO STUD PARTITION

- NOTES:
1. THIS DRAWING MUST NOT BE SCALED
 2. THIS DRAWING IS TO BE READ IN CONJUNCTION WITH ALL OTHER PROJECT DRAWINGS.
 3. ALL DETAILS AND DRAWINGS MUST BE READ IN CONJUNCTION WITH THE 'TW NATIONAL CONSTRUCTION SPECIFICATION FOR HOUSES & LOW RISE APARTMENTS'.

SYMBOL	DESCRIPTION
	13 AMP TWIN SWITCHED SOCKET OUTLET
	13 AMP TWIN SWITCHED SOCKET OUTLET WITH USB OUTLET
	13 AMP SWITCHED SOCKET OUTLET
	13 AMP SOCKET OUTLET
	13 AMP TWIN SWITCHED SOCKET OUTLET ABOVE WORKTOP
	13 AMP SWITCHED SOCKET OUTLET ABOVE WORKTOP
	13 AMP SWITCHED SOCKET OUTLET ABOVE WORKTOP
	MULTI CBO SWITCH ABOVE WORKTOP CONTROLLING UNSWITCHED SOCKETS BELOW WORKTOP & FAN BOOST SWITCH
	13 AMP SPUR UNIT
	13 AMP SWITCHED SPUR UNIT
	ONE WAY SWITCH
	TWO WAY SWITCH
	TELEPHONE POINT
	TELEVISION POINT
	FIBRE OPTIC ENTRY POINT
	COOKER SWITCH (1100MM ABOVE FTL)
	CONSUMER SERVICE UNIT. SEM. SEM. ACCESS WHERE REQUIRED (SWITCHES POSITIONED BETWEEN 1350-1450MM ABOVE F.F.L.)
	SHOWER POINT AS SITE SPEC
	CEILING LIGHTING POINT - PENDANT TYPE WITH ENERGY EFFICIENT LAMPS
	CEILING LIGHTING POINT - BATTEN TYPE WITH ENERGY EFFICIENT LAMPS
	RECESSED SPLASHPROOF ENERGY EFFICIENT DOWNLIGHTER OR LED. REFER TO TW SPECIFICATION
	DOWN LIGHTERS, ENERGY EFFICIENT OR LED. REFER TO TW SPECIFICATION
	WALL MOUNTED LIGHTING POINT
	WALL MOUNTED LIGHTING POINT WITH PIR SENSOR
	CEILING MOUNTED BULKHEAD FITTING
	SPLASHPROOF FIBRE FITTING WITH ENERGY EFFICIENT LAMP (TO BE IP65 ABOVE BATHS & SHOWERS)
	CENTRAL HEATING PROGRAMMER & DIM DIMER (Chamber Oh)
	PROGRAMMER TEMPERATURE SENSOR (Outdoor Only)
	PROGRAMMABLE ROOM THERMOSTAT
	DECENTRALISED CONTINUOUS RUNNING EXTRACT FAN
	RECIRCULATING COOKER HOOD
	3 POLE ISOLATOR SWITCH FOR EXTRACT MARKED WITH FAN SYMBOL
	CENTRAL HEATING WIRING JUNCTION BOX
	RADIATOR
	SMOKE DETECTOR
	CO ALARM TO BE WALL MOUNTED, AT A HEIGHT GREATER THAN THE HEIGHT OF ANY DOOR OR WINDOW OPENING BUT AT LEAST 150mm FROM THE CEILING, AS A HORIZONTAL DISTANCE OF BETWEEN 1-3m FROM THE EDGE OF THE FLOOR FINISHING APPLIANCE. ALARM NOT TO BE FITTED IN A STORE/CLOSET, DIRECTLY ABOVE A SINK/COOKER OR NEXT TO A DOWNDRAUGHT AIRWAY WHERE IT COULD BE AFFECTED BY DRAUGHTS. NOTE: IN ALL CASES LOCATIONS TO BE AGREED WITH THE GAS SAFE REGISTERED ENGINEER.
	GAS POINT
	LOOKABLE EXTERNAL TAP
	AUDIO ENTRY SYSTEM TO SPECIALIST DESIGN



Client: TAYLOR WIMPEY NORTH THAMES

Project: CHEQUERSFIELD WELWYN GARDEN CITY

Drawing: BLOCK B FIRST FLOOR PLAN SHEET 1 OF 2

Scale: SCALE 1:50 @ A1
 Date: APRIL 2018
 Drawn By: GC
 Checked By: GC
 Drawing No: 21188-BlockB-23
 Rev. No: T3

Taylor Wimpey
 Health, Safety & Environmental Information
 Extracted from the Significant Risk Register of the Taylor Wimpey A&Z Product Risk Assessment Document
 1. Increased risk of fall when temporary boarding & joists are removed from stairwell opening when filling slabs.
 NOTE: Contractors to discuss above risk with the Site Manager in conjunction with the TMSSE Manual before commencing work.
 All works must be carried out by a competent contractor working to an agreed safe system of work which reflects the controls highlighted above.

THIS DRAWING IS A COPYRIGHT
 All dimensions to be checked on site or in the workshop before work commences.
 Only figured dimensions to be worked to. Any discrepancies to be reported to the Architect.