

project / site

15 station road, cuffley, herts

client

willow city estates plc

orientation



type

window restrictor details

status

for client approval / planning / building control

revisions

drawn by

Stuart Hancock  
RIBA BSc (Hons) Architecture

scale

1:4 @ A4

date

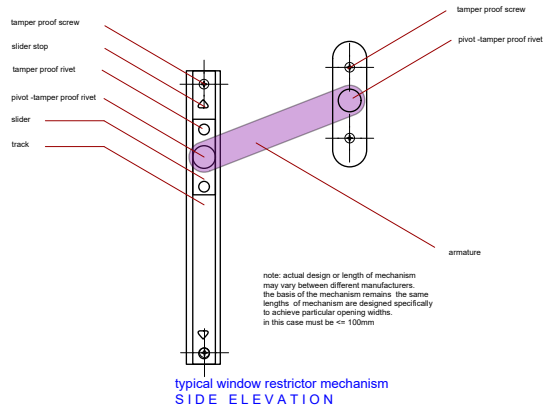
07 jun 2019

dwg no

0/A600/CN/206

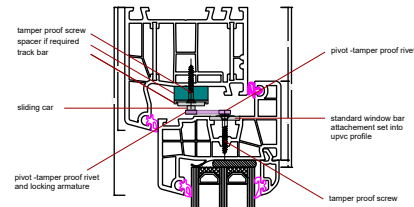
rev

-



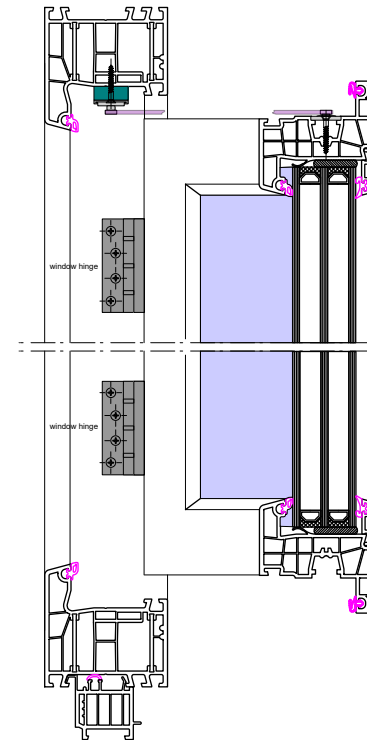
typical window restrictor mechanism  
SIDE ELEVATION

Note: window restrictor must be installed according to manufacturers guide min 100mm clear opening. Use M16 Restrictor - slat form screwfix or similar. Armature must be 'one length' and NOT demountable.

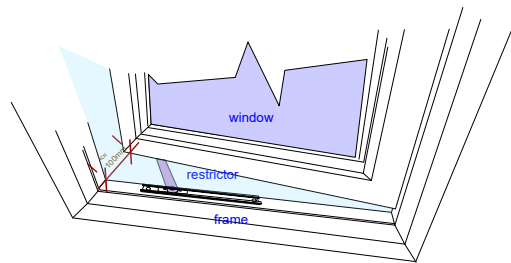


typical Upvc frame and window profile  
PLAN SECTION-CLOSED

Note: restrictor may be mounted upper/lower in line with hinge. the fixed armature will restrict full opening of the window. mechanism below shown fixed to top. it is suggested to mount at bottom for easier removal for fire egress.



typical Upvc frame and window profile  
PLAN SECTION-OPEN



window open showing clear opening of <=100mm  
PERSPECTIVE VIEW