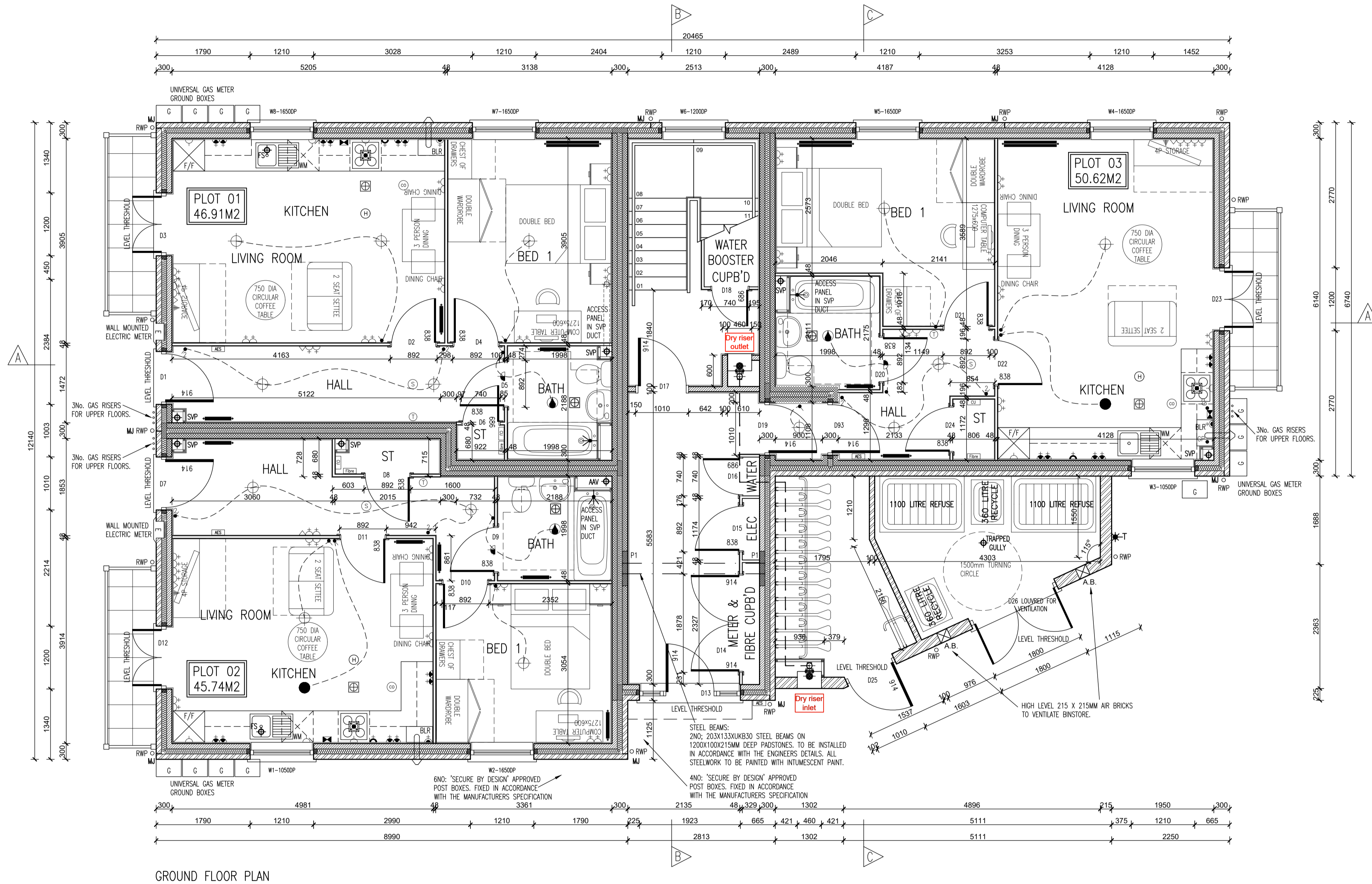


Rev. No.	Date	Amendment	Initial
Rev. T1	20.07.18	Tender Issue	GC
Rev. T2	19.09.18	Block strengths updated to accord with the Structural Engineers comments.	PJJH
Rev. T3	28.11.18	Lobby added to front door of Plot 03 and elec riser adjusted by 27mm to suit. Fibre optic entry points indicated.	GC



SYMBOL	DESCRIPTION
[Symbol]	13 AMP TWIN SWITCHED SOCKET OUTLET
[Symbol]	13 AMP SWITCHED SOCKET OUTLET WITH USB OUTLET
[Symbol]	13 AMP SWITCHED SOCKET OUTLET
[Symbol]	13 AMP SOCKET OUTLET
[Symbol]	13 AMP TWIN SWITCHED SOCKET OUTLET ABOVE WORKTOP
[Symbol]	13 AMP TWIN SWITCHED SOCKET OUTLET ABOVE WORKTOP WITH USB OUTLET
[Symbol]	13 AMP SWITCHED SOCKET OUTLET ABOVE WORKTOP
[Symbol]	MULTI SPD SWITCH ABOVE WORKTOP CONTROLLING UNSWITCHED SOCKETS BELOW WORKTOP & FAN BOOST SWITCH
[Symbol]	13 AMP SPUR UNIT
[Symbol]	13 AMP SWITCHED SPUR UNIT
[Symbol]	ONE WAY SWITCH
[Symbol]	TWO WAY SWITCH
[Symbol]	TELEPHONE POINT
[Symbol]	TELEVISION POINT
[Symbol]	FIBRE OPTIC ENTRY POINT
[Symbol]	COOKER SWITCH (1100MM ABOVE FFL)
[Symbol]	CONSUMER SERVICE UNIT, SEM RECESSED WHERE REQUIRED (SWITCHES POSITIONED BETWEEN 1350-1400MM ABOVE F.F.L.)
[Symbol]	SHOWER POINT AS SITE SPEC
[Symbol]	CEILING LIGHTING POINT - PENDANT TYPE WITH ENERGY EFFICIENT LAMPS
[Symbol]	CEILING LIGHTING POINT - BATTEN TYPE WITH ENERGY EFFICIENT LAMPS
[Symbol]	RECESSED SPARKPROOF ENERGY EFFICIENT DOWNLIGHTER OR LED, REFER TO TM SPECIFICATION
[Symbol]	DOWN LIGHTERS, ENERGY EFFICIENT OR LED, REFER TO TM SPECIFICATION
[Symbol]	WALL MOUNTED LIGHTING POINT
[Symbol]	WALL MOUNTED LIGHTING POINT WITH PIR SENSOR
[Symbol]	CEILING MOUNTED BULKHEAD FITTING
[Symbol]	SPARKPROOF FROG FITTING WITH ENERGY EFFICIENT LAMP (TO BE INSIDE BINS & SHOWERS)
[Symbol]	CENTRAL HEATING PROGRAMMER & DHW TIMER (Cylinder Only)
[Symbol]	PROGRAMMER TEMPERATURE SENSOR (Cylinder Only)
[Symbol]	PROGRAMMABLE ROOM THERMOSTAT
[Symbol]	DECENTRALISED CONTINUOUS RUNNING EXTRACT FAN
[Symbol]	RECYCLING COOKER HOOD
[Symbol]	3 POLE ISOLATOR SWITCH FOR EXTRACT MIXED WITH FAN CIRCUIT
[Symbol]	RADIATOR
[Symbol]	CENTRAL HEATING WIRING JUNCTION BOX
[Symbol]	SMOKE DETECTOR
[Symbol]	HEAT DETECTOR
[Symbol]	CO ALARM, TO BE WALL MOUNTED, AT A HEIGHT GREATER THAN THE HEIGHT OF ANY DOOR OR WINDOW OPENING BUT AT LEAST 150mm FROM THE CEILING, AT A HORIZONTAL DISTANCE OF BETWEEN 1-3m FROM THE EDGE OF THE FUEL BURNING APPLIANCE. ALARM NOT TO BE FITTED IN A STORE/COFFER, DIRECTLY ABOVE A SINK/COOKER OR NEXT TO A SPOONRACK OR ANYWHERE THAT COULD BE AFFECTED BY GRAVITY. NOTE: IN ALL CASES LOCATIONS TO BE AGREED WITH THE GAS SAFE REGISTERED ENGINEER.
[Symbol]	SHOWER HEAD
[Symbol]	CAS FUNK
[Symbol]	LOCKABLE EXTERNAL TAP
[Symbol]	AUDIO ENTRY SYSTEM TO SPECIALIST DESIGN

LEGEND:
 C = GAS METER
 RWP = RAW WATER PIPE
 AW = AIR ADMITTANCE VALVE
 BLR = BLOWER
 E = ELECTRIC METER
 SVP = SOIL VENT PIPE
 VP = 75 DRY VENT PIPE

APPROVED DOCUMENT PART 6 (2006 EDITION) REQUIREMENTS:
 a) THERMOSTATIC MIXING VALVE DEVICE TO BE FITTED TO BATH IN ACCORDANCE WITH APPROVED DOCUMENT G (Apr 2010)
 b) WATER USAGE WILL NOT EXCEED 125 LITRES PER PERSON PER DAY TO COMPLY WITH APPROVED DOCUMENT G (Apr 2010)

PLEASE REFER TO:
 SECTION 03 - EXTERNAL WALLS (FULL FFL)
 SECTION 08 - INTERNAL WALLS
 FROM THE TM NATIONAL CONSTRUCTION SPECIFICATION FOR HOUSES & LOW RISE APARTMENTS

VENTILATION REQUIREMENTS
 SYSTEM 3 TO BE VIA DECENTRALISED CONTINUOUS MECHANICAL EXTRACT FAN/EXTRACT COOLER TYPES TO COMPLY WITH APPROVED DOCUMENT F, TABLE 5.1b. AIR LEAKAGE RATES TO BE SET AT A DEFAULT OF 2m³/m²/24hrs.
 NOTE: WC & BATHROOM/ENLITE (no window) - BOOST VIA LIGHT SWITCH WITH BUILT IN HANDSET & TIMER.
 WC & BATHROOM/ENLITE (with window) - BOOST VIA BUILT IN HANDSET & TIMER PLUS MANUAL BOOST SWITCH/NOT LIGHT SWITCH.



INNOVATE

architectural services

Client:
TAYLOR WIMPEY NORTH THAMES

Project:
**CHEQUERSFIELD
 WELWYN GARDEN CITY**

Drawing:
**BLOCK A
 GROUND FLOOR PLAN**

Scale:
SCALE 1:50 @ A1

Date:
APRIL 2018

Drawn By: **PJJH** Checked By: **GC** Drawing No: **21188-BlockA-21** Rev. No: **T3**

Taylor Wimpey
 Health, Safety & Environmental Information
 Extracted from the Significant Risk Register of the Taylor Wimpey AA32 Product Risk Assessment Document

1. Increased risk of fall when temporary boarding & joists are removed from standard opening when filling openings.

NOTE: Contractors to discuss above risk with the Site Manager in conjunction with the TMSSE Manual before commencing work.

All works must be carried out by a competent contractor working to an agreed safe system of work which reflects the controls highlighted above.

BRICK/BLOCKWORK LEGEND

External Walls
 103mm FACING BRICKWORK
 103mm BLOCKWORK - 7.0N/m² MEDIUM DENSE SOLID BLOCKWORK TO GROUND FLOOR. 3.6N/m² LIGHTWEIGHT CONCRETE BLOCKWORK TO 1ST, 2ND & 3RD FLOORS. DENSITY TO BE IN ACCORDANCE WITH THE CONSTRUCTION SPECIFICATION / STRUCTURAL ENGINEERS DETAILS.

Party Walls
 103mm BLOCKWORK - 7.0N/m² (GROUND FLOOR) & 3.6N/m² (ABOVE GROUND FLOOR) ARKRITE (600-800kg/m³) FOR 4-10M-20. PLEASE REFER TO ROBUST STANDARD DETAILS & STRUCTURAL ENGINEERS SPECIFICATION.

STUDWORK LEGEND

STUD PARTITION - 80MM OVERALL THICKNESS COMPRISING 63.5MM THICK STUD WITH 12.5MM PLASTERBOARD EITHER SIDE - WHEN REFERRED TO METAL STUD REFER TO T.S. No. 0114/04/14 FOR METAL STUD SETTING OUT GUIDANCE.
 PARTITION STUD PARTITION - 125MM OVERALL THICKNESS COMPRISING 75.0MM THICK STUD WITH 12.5MM PLASTERBOARD EITHER SIDE & FINISHED WITH 12.5MM PLASTERBOARD (SEE STD DETAIL 903-08-18)
 ACOUSTIC STUD PARTITION (TO TAYLOR WIMPEY SPECIFICATION)
 HALF HOUR FIRE RESISTANCE TO STUD PARTITION

PADSTONES
 P1 = CLASS B ENGINEERING BRICK PADSTONES 660 X 300MM DEEP WITH 440 X 100MM STEEL BEARING PLATE TO ALL STEEL BEARING BEAM ENDS. ALL TONGS TO BE IN ACCORDANCE WITH THE STRUCTURAL ENGINEERS DETAILS / SPECIFICATION.

- NOTES:**
- THIS DRAWING MUST NOT BE SCALED
 - THIS DRAWING IS TO BE READ IN CONJUNCTION WITH ALL OTHER DRAWINGS
 - ALL DETAILS AND DRAWINGS MUST BE READ IN CONJUNCTION WITH THE TM NATIONAL CONSTRUCTION SPECIFICATION FOR HOUSES & LOW RISE APARTMENTS.