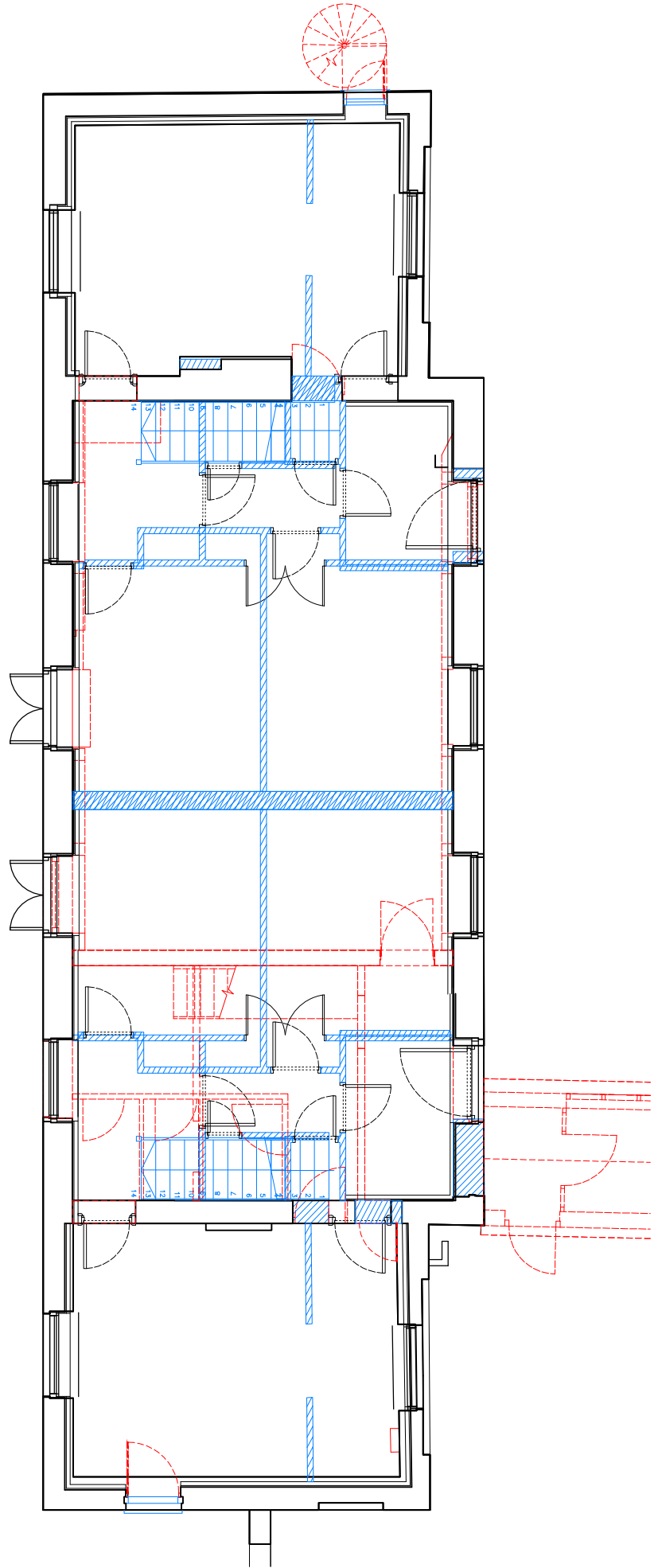


GROUND FLOOR DEMOLITION PLAN, BALLROOM WING  
1:100



FIRST FLOOR DEMOLITION PLAN, BALLROOM WING  
1:100

1:50	1	2.5	5m
1:100	2	5	10m
1:200	4	10	20m
1:500	10	25	50m

KEY:	
	RED DASH LINE: TO BE DEMOLISHED
	BLUE LINE: PROPOSED ALTERATIONS