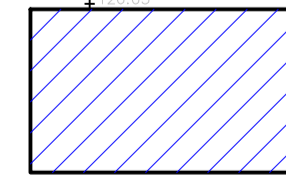
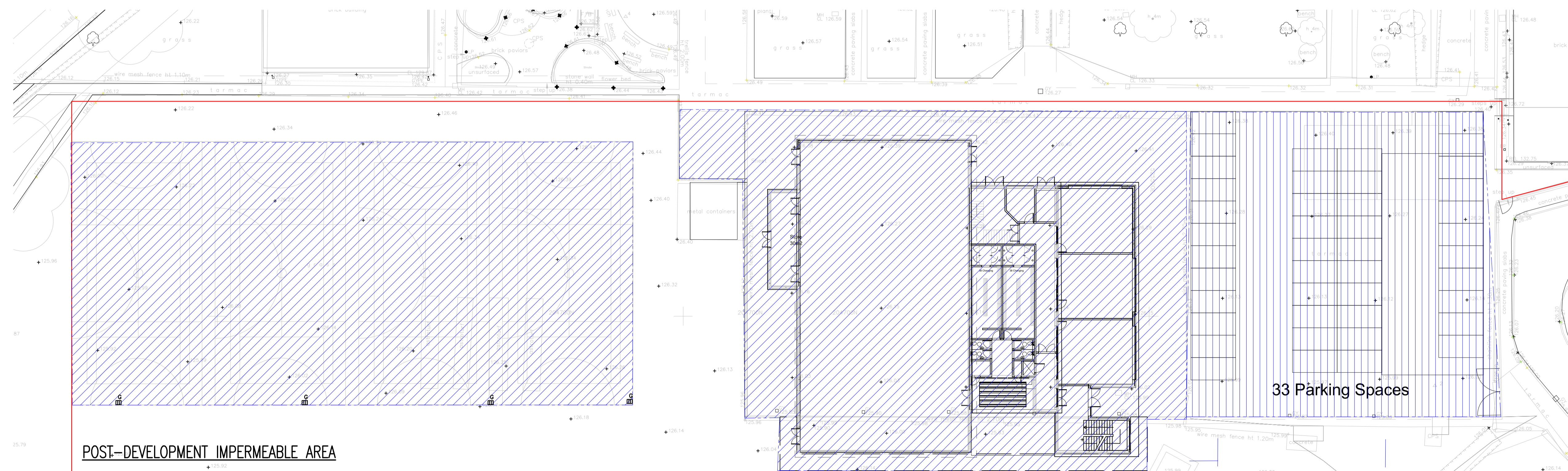


EXISTING IMPERMEABLE AREA TO BE REPLACED BY DEVELOPMENT
 = 2,718m²
 RUNOFF = 0.1655 X 2.78 X 55 = 41 L/s

33 Parking Spaces



PROPOSED IMPERMEABLE AREA AFTER DEVELOPMENT = 4,604m²
 RUNOFF TO BE RESTRICTED TO 5 L/s

33 Parking Spaces

Rev	Revision Notes	Drawn	Approved	Date
A	PROPOSED PARKING ATTENUATION INCLUDED	RW	RW	26.04.2019

INGENT
 CONSULTING ENGINEERS
 Unit 10 Brightwell Barns, Waldringfield Road, Brightwell, Suffolk, IP10 0BJ.
 Tel: 01473 598038 --- www.ingent.co.uk --- email: info@ingent.co.uk

STRATEGY

Project
 CHANCELLOR'S SCHOOL

Drawing Title
 SURFACE WATER DRAINAGE STRATEGY
 EXISTING AND PROPOSED
 IMPERMEABLE AREAS

Client
 CHANCELLOR'S SCHOOL

Date
 MARCH 2019

Drawn by RGW	Designed by RGW	Checked by RGW	Approved by RGW
-----------------	--------------------	-------------------	--------------------

Scale
 1:250

Drawing No. 1903-330_001	Revision A	Size A1
-----------------------------	---------------	------------