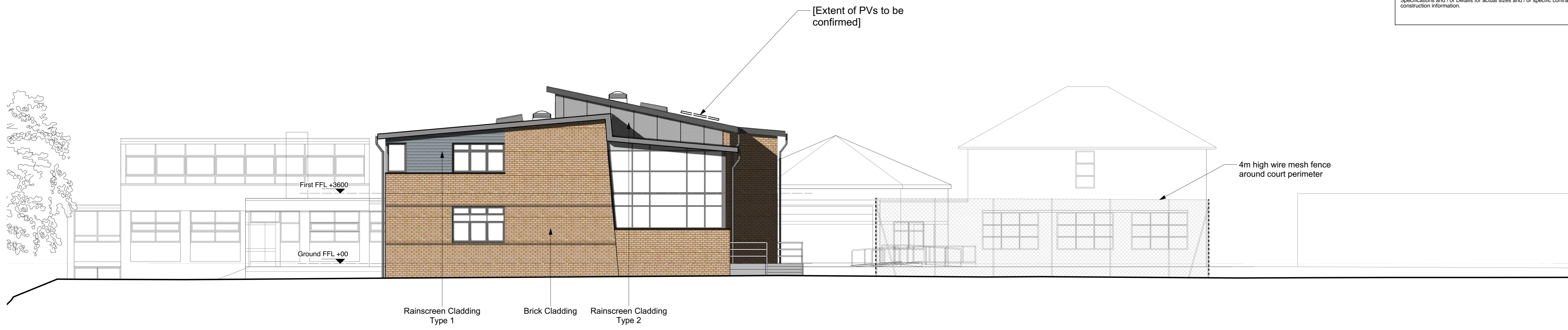


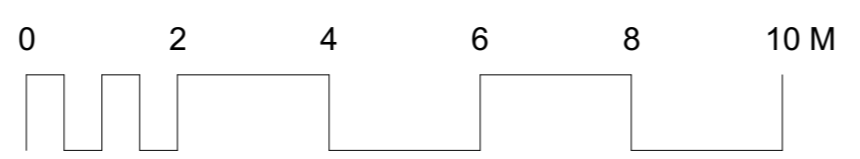
**NOTES:**  
 This drawing (printed or electronic versions). Contractors must ensure consistency between versions.  
 All other design team elements, where indicated, have been imported from the consultant's drawings and reference should be made to the individual consultant's drawings for exact setting out, size and type of component.  
 Discrepancies and / or ambiguities within this drawing, between it and the information given elsewhere, must be reported immediately to the architect for clarification before proceeding.  
 All works are to be carried out in accordance with the latest British Standards and Codes of Practice unless specifically directed otherwise in the specification.  
 Responsibility for the reproduction of this drawing in paper form, or if issued in electronic format, lies with the recipient to check that all information has been replicated in full and is correct when compared to the original paper or electronic image. Graphical representations of equipment on this drawing have been co-ordinated, but are approximations only. Please refer to the Specifications and / or Details for actual sizes and / or specific contractor construction information.



WEST ELEVATION



SOUTH ELEVATION



**Lyster Grillet & Harding**  
 Architect  
 1 Pemberton Place  
 Cambridge CB2 1XB  
 01223 351626  
 admin@lgarchitects.com  
 www.lgarchitects.com  
 Copyright © 2017 Lyster Grillet & Harding Ltd. All rights reserved.

job title  
**Stanborough School  
 SEC3 Expansion**  
 date 12.07.18  
 drawn JC  
 scales 1:100 @ A1 1:200 @ A3

client  
**Governors of Stanborough School**  
 building + drawing title  
**Teaching Block Elevations**

A	18/7/18	Updated for Planning submission	JC	SB
Rev.	Date	Notes	By	Chk
Clouded Areas Indicate revisions since last issue				
work stage	DEVELOPED DESIGN			
drawing status	PLANNING			
job no. + work stage + building + drawing no.	2142 03 0120			revision
				A