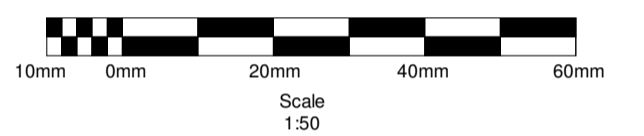


General Notes

1. These drawings are to be read in conjunction with all relevant Architect's and Engineer's drawings and specifications.
2. Except where specific dimensions are shown on these drawings, all setting out shall be in accordance with the architects drawings and specifications. Any discrepancy between these drawings and the architects drawings or the actual site dimensions should be referred to the engineer immediately and confirmed in writing. The contractor is responsible for the accuracy of all dimensions and the setting out.
3. All materials and workmanship to be in accordance with relevant British Standards and recognised codes of practice.
4. Do not scale from these drawings. If in doubt, ask.
5. All dimensions are in millimetres unless noted otherwise.
6. All proprietary materials to be in accordance with manufacturers specifications and to Engineer's approval.
7. Refer to Drg. No.00 for Structural Specification

Lifting beam to be painted yellow and marked with "3300kg SWL" in black lettering, 100mm high. Stop-ends to be bolted in place at all beam ends (suggest 2no. 150x150 RSA secured to beam web with 2no. M10 bolts - position stop 200mm back from beam end).



GAP LTD
GODSELL • ARNOLD
 PARTNERSHIP LTD

7 Arrowsmith Court
 Station Approach
 Broadstone
 Dorset BH18 8AX
 Tel 01202 600 900
 Fax 01202 640 317

Consulting Civil and
 Structural Engineers

www.gaptd.co.uk

GAP Project No: 18104



TRANT Engineering Ltd.
 Head Office: Rushington House,
 Rushington,
 Southampton SO40 8LT.
 Telephone: (023) 8066 5544
 E-Mail: engineering@trant.co.uk

Rev.	Description	Drawn	Check	Date
A	Preliminary Issue	AP	SA	11.09.18

"P" Preliminary "T" Tender "C" Construction "R" Record

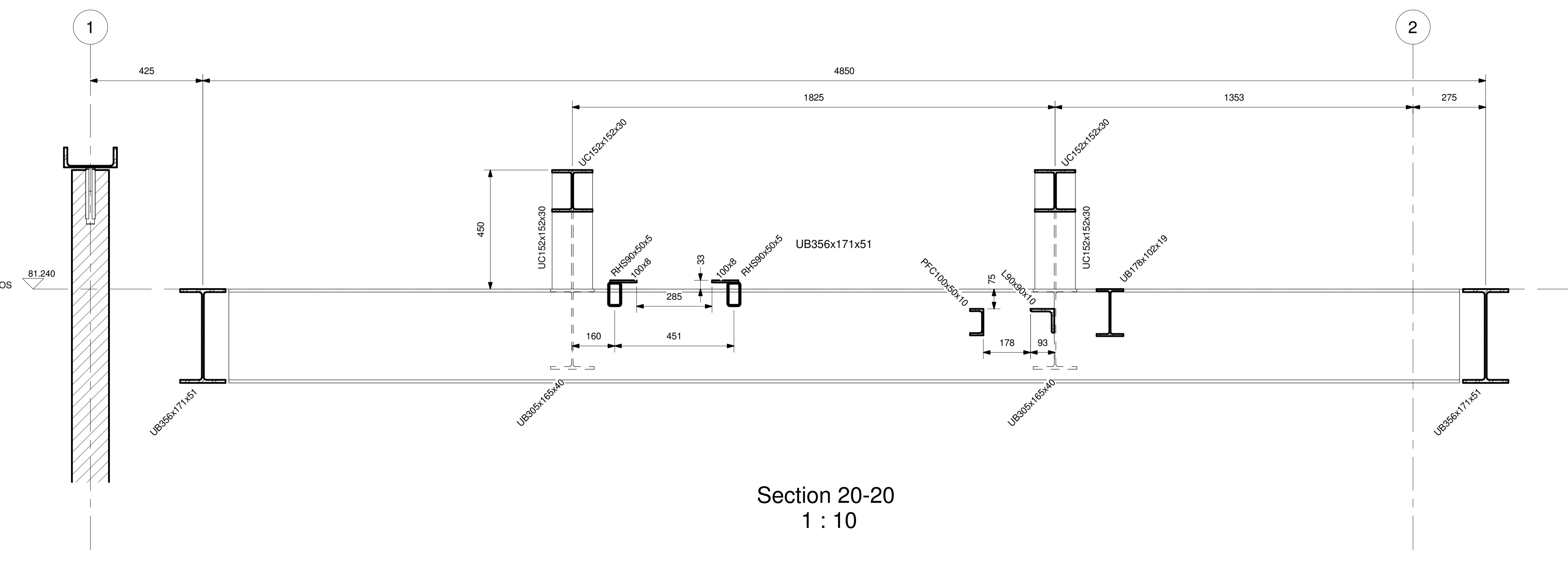
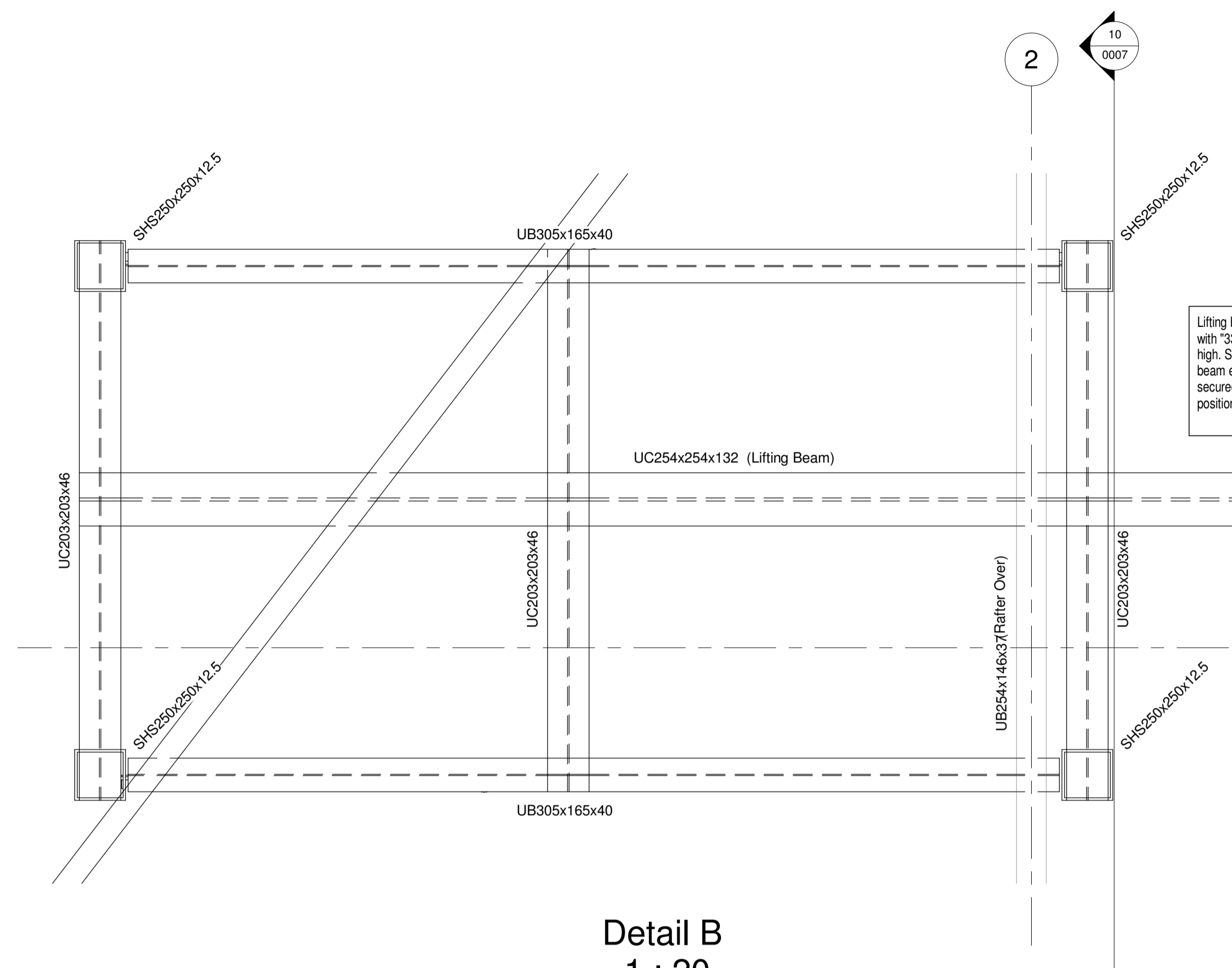
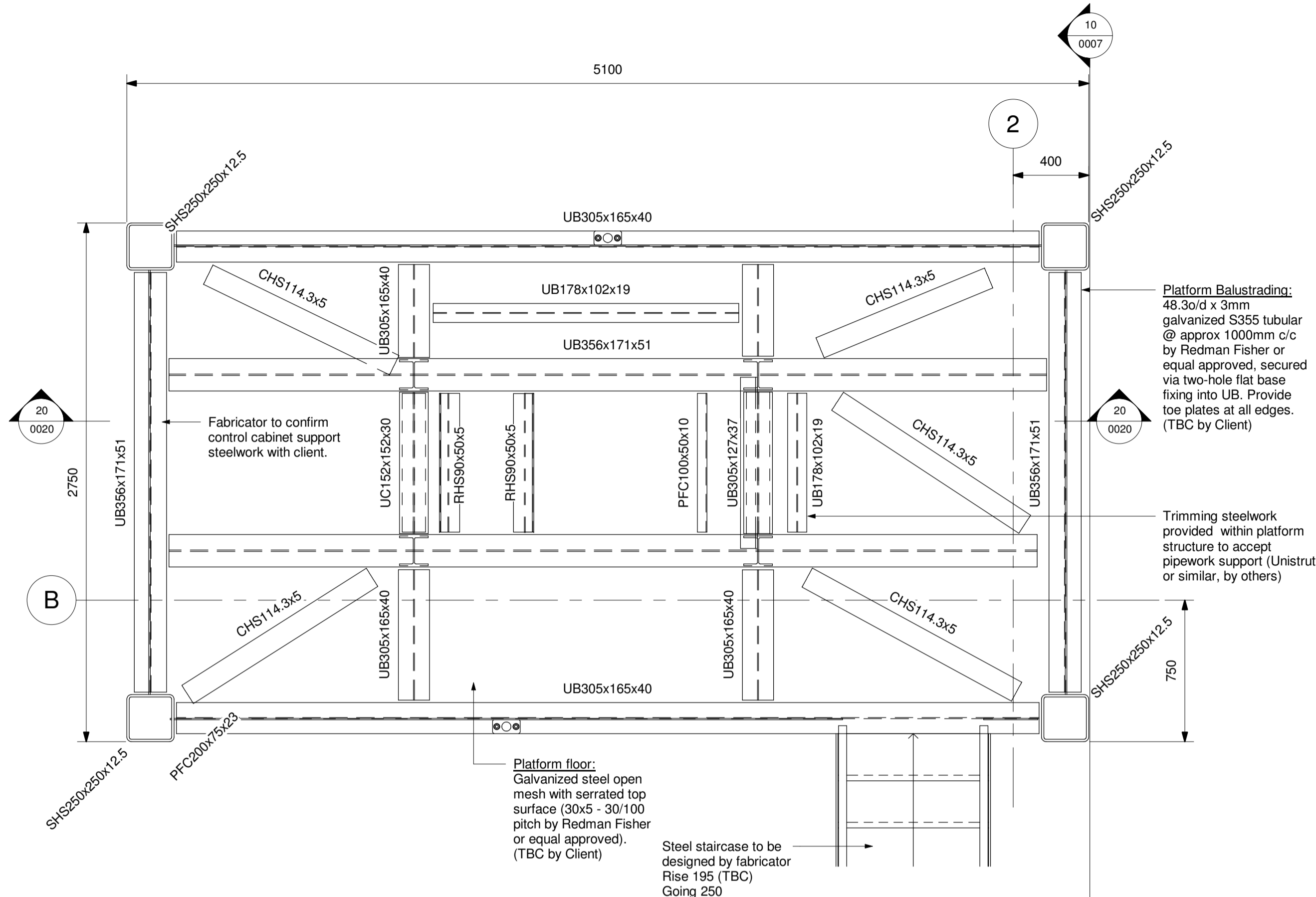


Affinity Water Limited
 Tamblin Way
 Hatfield
 Herts. AL10 9EZ

Site: **North Mymms**
 Project: **Metaldehyde Building**
 Title: **Platform Sections & Details**

Job No:	18104	Sheet Size:	A1	Scale:	As indicated
Design:	Designer	Checked By:	SA	Approved By:	-
Sheet 1 of 1 Sheets	Dwg Location:		Rev:		

PO18849-DR-293-0020 **A**



ALL STEELWORK TO BE BLAST-
 CLEANED TO SA 2.5 AND HOT DIPPED
 GALVANISED TO 140 MICRONS

NOTE:
 Architectural details & locations
 shown indicative only.
 Refer to Trant drawings for detailed
 design & dimensions.
 Final set out and location of all
 steel members is subject to
 confirmation of all dimensions on
 site prior to fabrication.