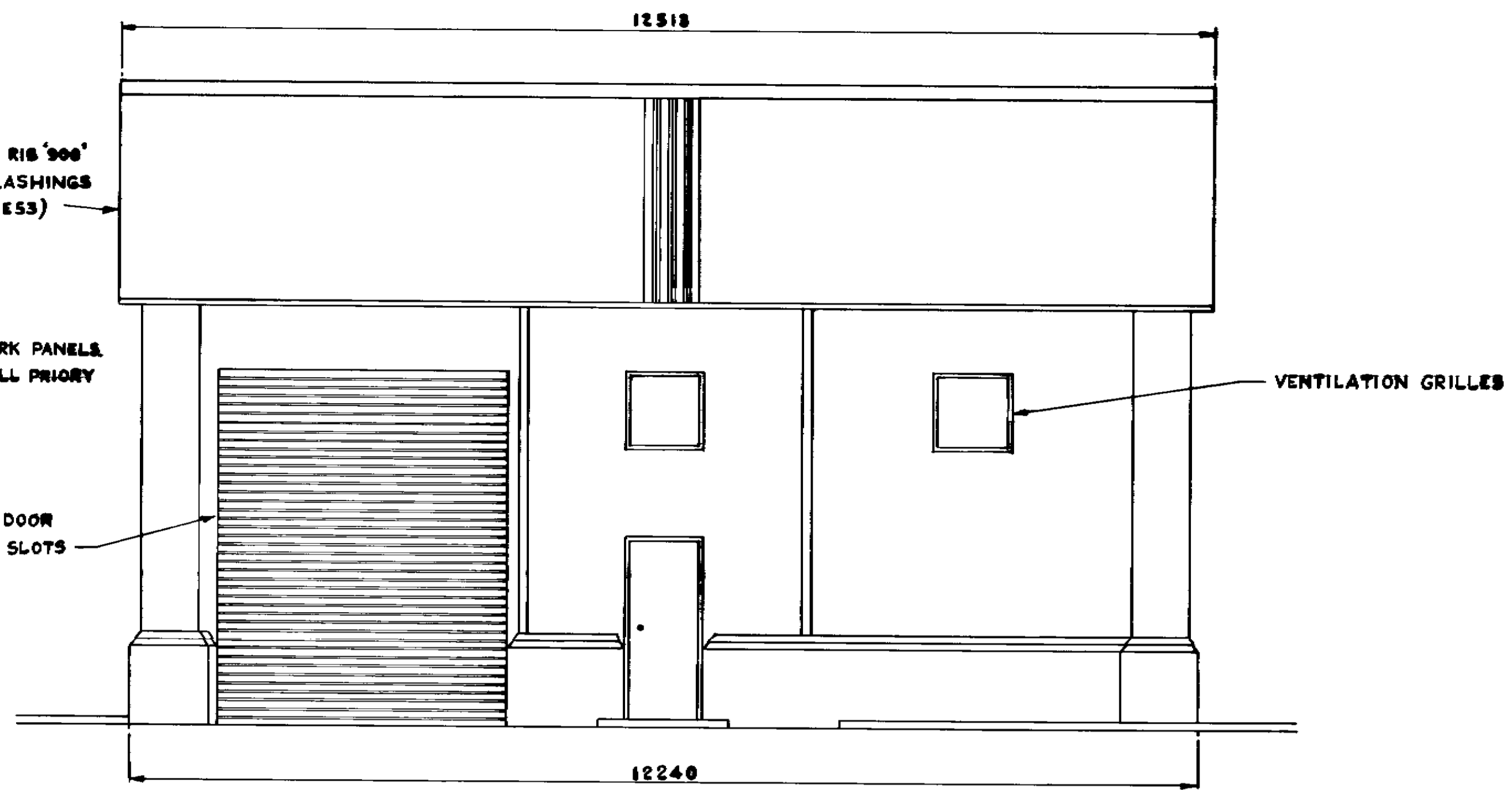
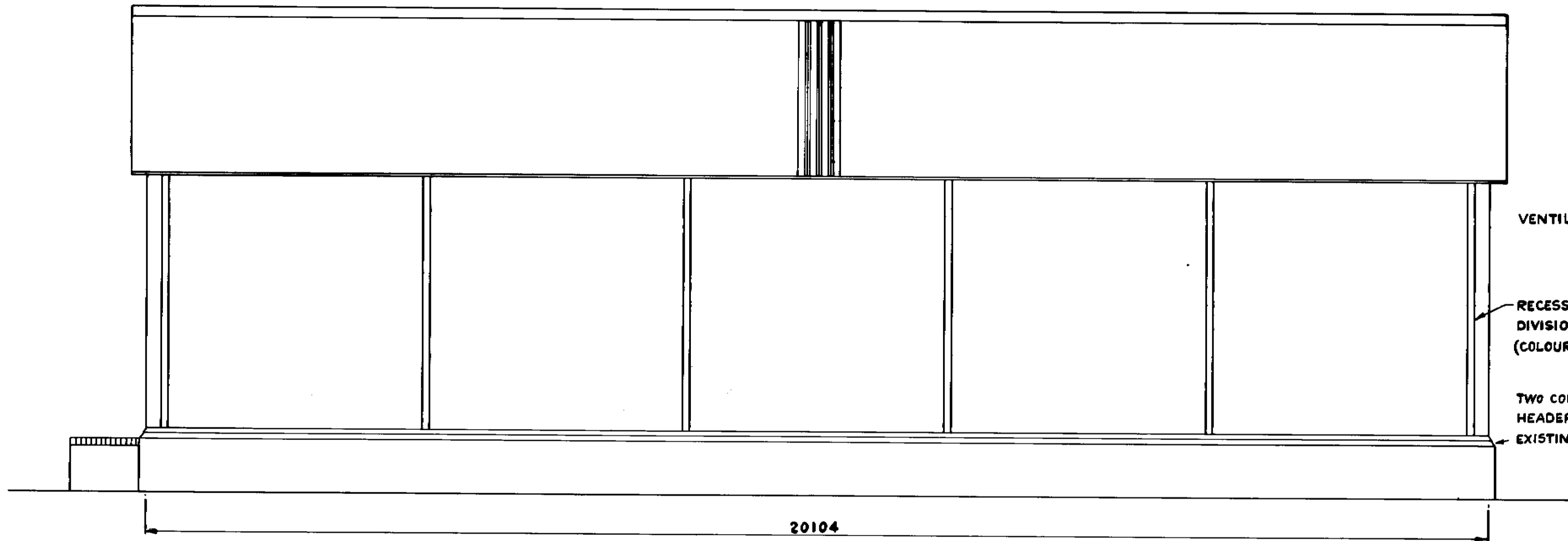


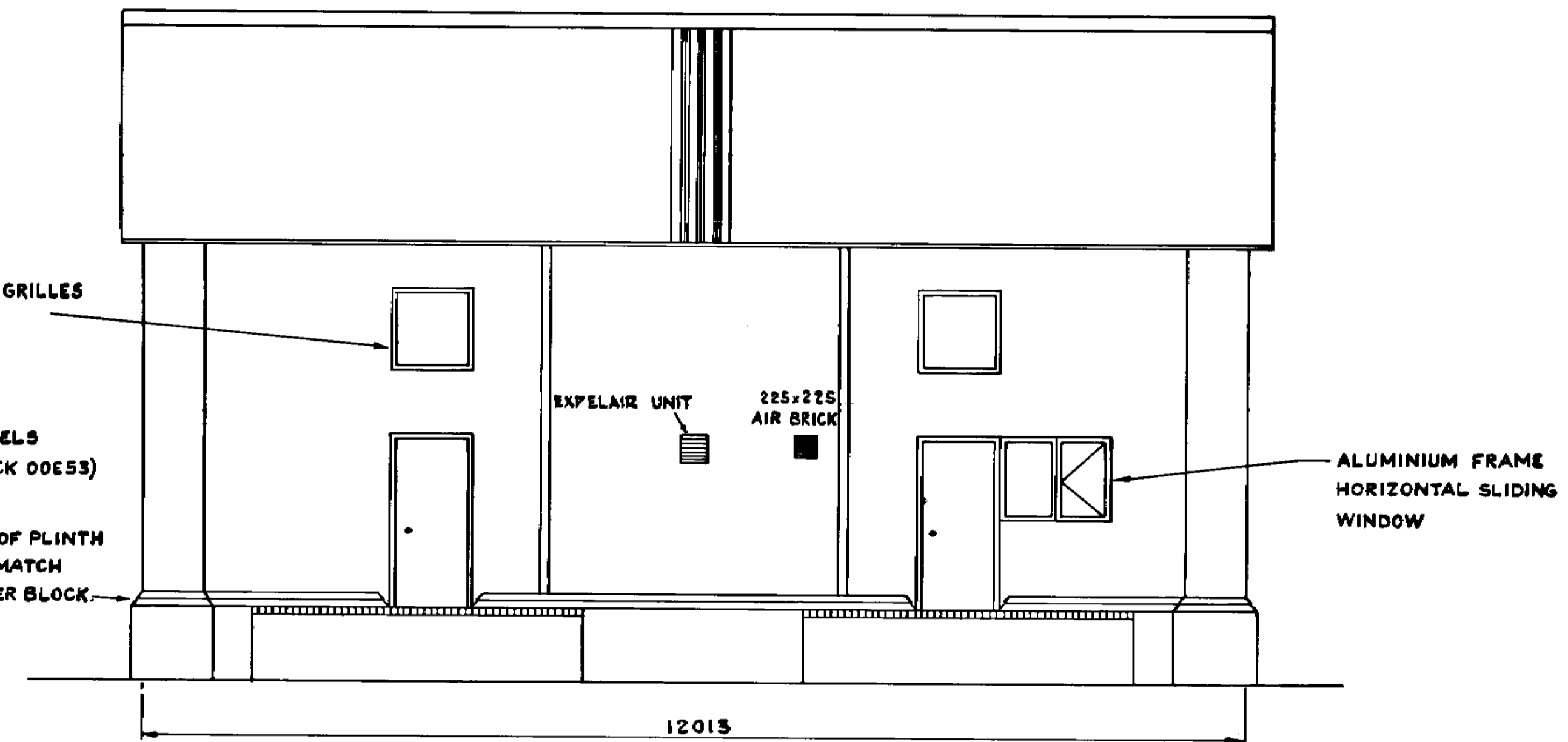
NORTH ELEVATION



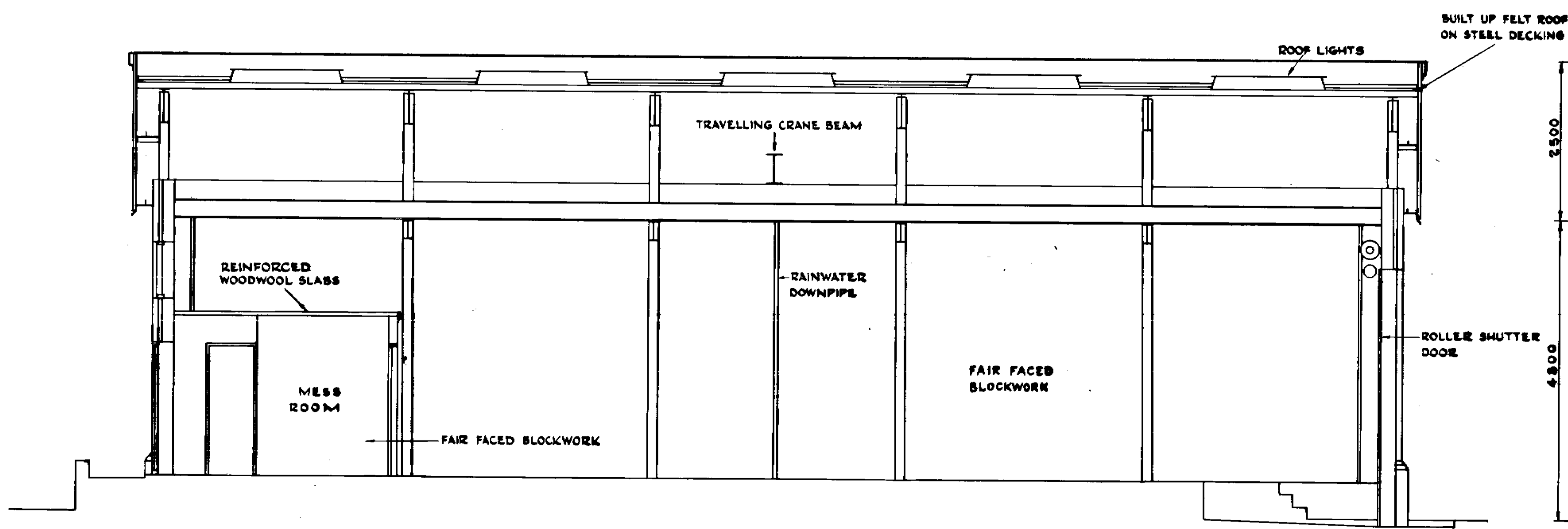
EAST ELEVATION



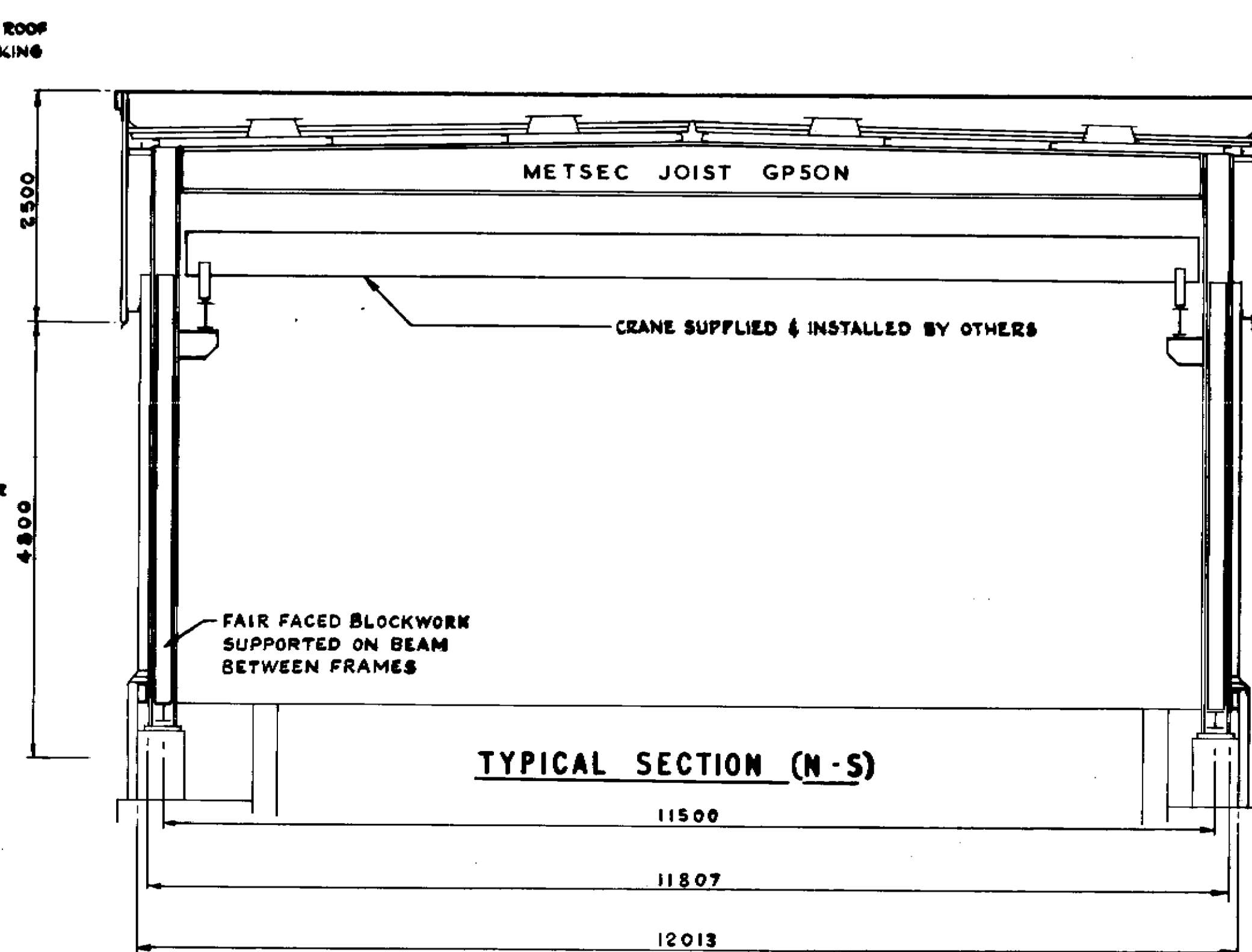
SOUTH ELEVATION



WEST ELEVATION



TYPICAL SECTION (W-E)



TYPICAL SECTION (N-S)

| | |
|---|----------------------|
| LEE VALLEY WATER COMPANY CHIEF ENGINEER S.R. RIPPON, B.Sc., M.T.E., F.I.W.E. BISHOPS RISE, HATFIELD, HERTS. | |
| NORTH MIMMS RECONSTRUCTION MAIN PUMPHOUSE ELEVATIONS AND SECTIONS | |
| DRAWING No. 303/125/19 | REVISION B |

FAIR FACED BLOCKWORK ADDED S.R.J. 16.9.79 **A** FRAME DETAILS CHANGED S.R.J. 22.10.79 **B**

DRAWN S.R.J. TRACED M.H. APPROVED S.R.J. DATE 6-6-79 SCALES 1:50

303/125/19