

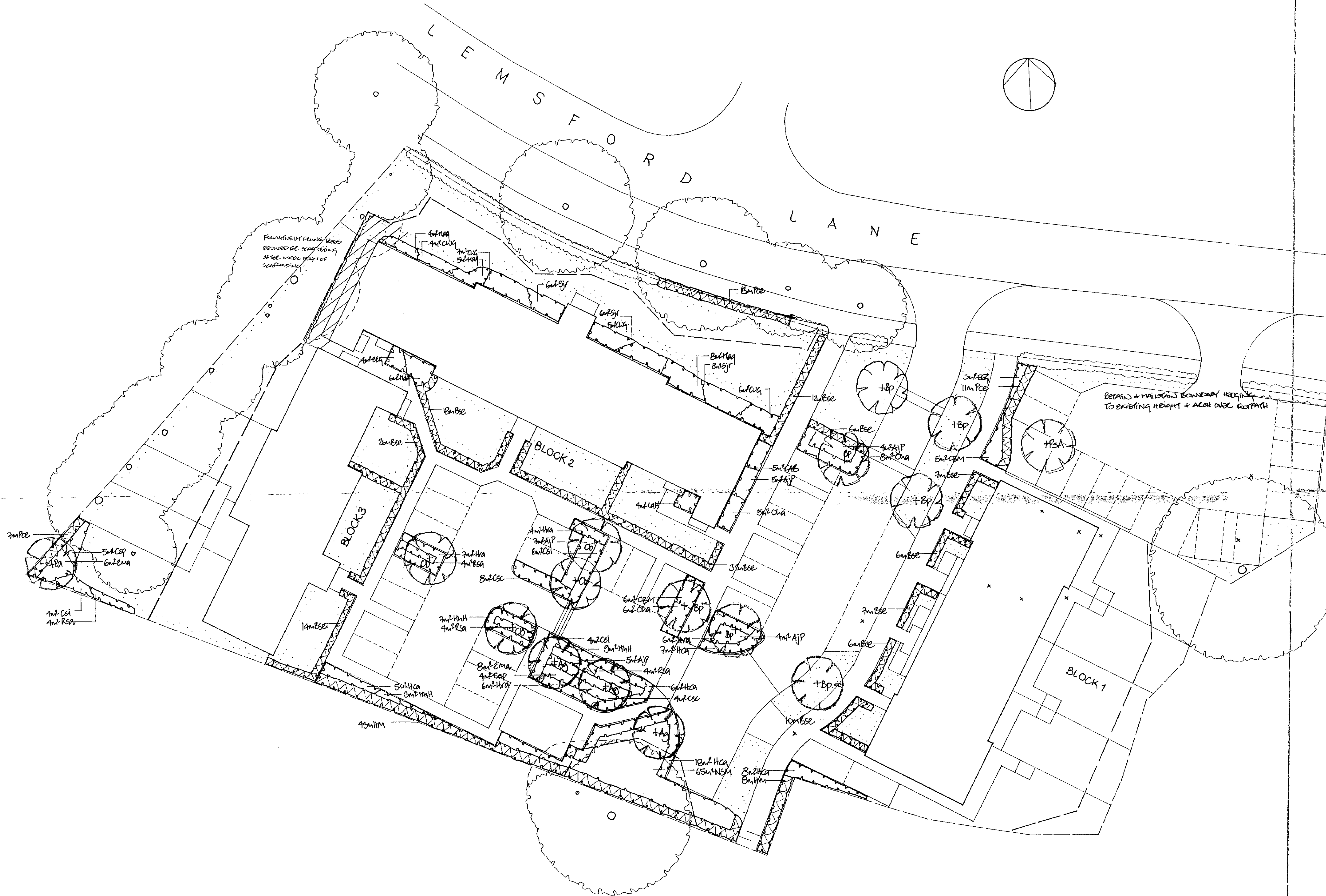
LEMSFORD LANE, WELWYN PLANTING SCHEDULE

Key	Species	No	Size
<b>Trees</b>			
Ag	Alnus glutinosa	3	10-12 cms girth, root balled
Bp	Betula pendula	7	10-12 cms girth, root balled
Cb	Carpinus betulus	4	10-12 cms girth, root balled
Pa	Prunus avium	1	10-12 cms girth, root balled
PsA	Prunus subhirtella 'Autumnalis'	1	10-12 cms girth, root balled
<b>Hedging</b>			
		M	No/M
Bse	Buxus sempervirens	148	5 740 30-40 cms, pot grown, single line
Pce	Prunus cerasifera (green form)	31	4 124 40-60 cms, bare root, double line
HM	Hedge Mix comprising	65	4 40-60 cms, bare root, double line
	20% Acer campestre		52
	40% Crataegus monogyna		104
	40% Prunus cerasifera (green)		104
		Sq M	No/Sq M
<b>NSM Native Shrub Mix</b>			
	20% Corylus avellana		13 40-60 cms, bare root
	30% Crataegus monogyna		20 40-60 cms, bare root
	10% Ilex aquifolium		6 40-60 cms, pot grown
	20% Prunus cerasifera		13 40-60 cms, bare root
	20% Prunus spinosa		13 40-60 cms, bare root
<b>Ornamental Shrubs</b>			
AJP	Azucuba japonica 'Picturata'	25	2 50 40-60 cms, 3 lt pots
CAB	Ceanothus 'Autumnal Blue'	5	2 10 40-60 cms, 3 lt pots
CBM	Ceanothus 'Blue Mound'	11	3 33 40-60 cms (D), 3 lt pots
Csp	Chaenomeles speciosa	9	2 18 40-60 cms, 3 lt pots
CWG	Cornus 'White Gold'	22	3 66 40-60 cms, 3 lt pots
Csi	Cotoneaster simonsii	14	2 28 40-60 cms, 3 lt pots
Csc	Cytisus scoparius	12	2 24 40-60 cms, 3 lt pots
Ema	Elaeagnus macrophylla	14	2 28 40-60 cms, 3 lt pots
EEG	Eunonymus 'Emerald & Gold'	7	6 42 30-40 cms (D), 2 lt pots
Hra	Hebe rakensis	23	4.5 104 30-40 cms, 2 lt pots
Hhf	Hedera helix 'Hibernica'	19	4 76 30-40 cms (D), 2 lt pots
Hca	Hypericum calycinum	44	6 264 2 lt pots
LaH	Lavandula angustifolia 'Hidecote'	4	6 24 30-40 cms, 2 lt pots
Maq	Mahonia aquifolium	23	5 115 30-40 cms, 2 lt pots
Oha	Olearia x haustii	19	3 57 40-60 cms, 3 lt pots
Rsa	Ribes sanguineum	16	2 32 40-60 cms, 3 lt pots
Sjr	Skimmia japonica rubella	20	3 60 40-60 cms, 3 lt pots
All planted areas 50 mm bark mulch			
No peat based products to be used			
All pots/containers to be recycled			
Grass			

Key

Tree protection fencing: 1.8 m Heras fencing mounted firmly on scaffold poles. To be erected before any construction and retained until external works. Fixed with signs 'Construction Exclusion Zone-Keep Out'.

BS5837:2005 'Trees in Relation to Construction Recommendations' Fig 3 scaffolding



NB INCOMPLETE SERVICES INFORMATION CONTRACTOR TO CHECK BEFORE PLANTING

Low B Hedge window tree added 22-3-09  
Red A1 tree protection key added 16-4-09.

**Caroline Hay**  
ASSOCIATES  
LANDSCAPE ARCHITECTS

21 High St/1 George St, Welwyn Garden City, Herts SG8 5ES  
Tel/fax 01954 280500

Project  
**LEMSFORD LANE**  
WELWYN GARDEN CITY

Drawing Title  
**PLANTING PLAN**

Scale 1:200 Drawn by Cjh Date 21/5/09

Dwg No 596.2 Rev B