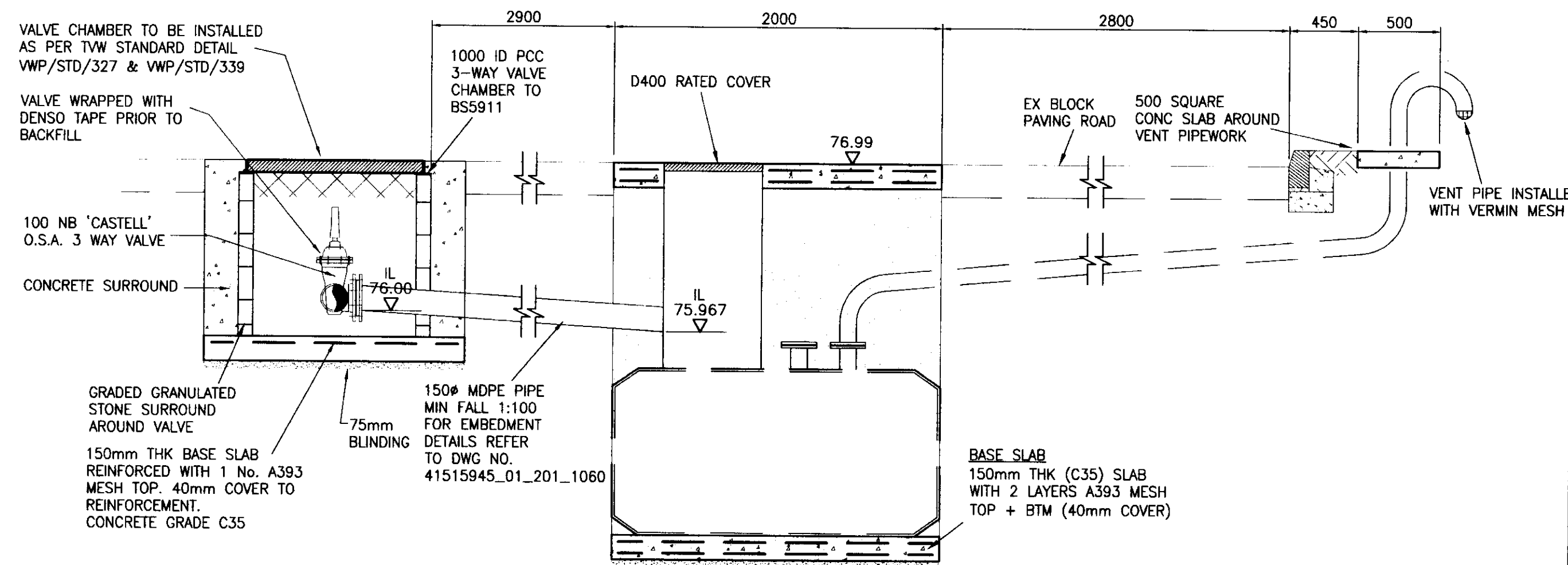
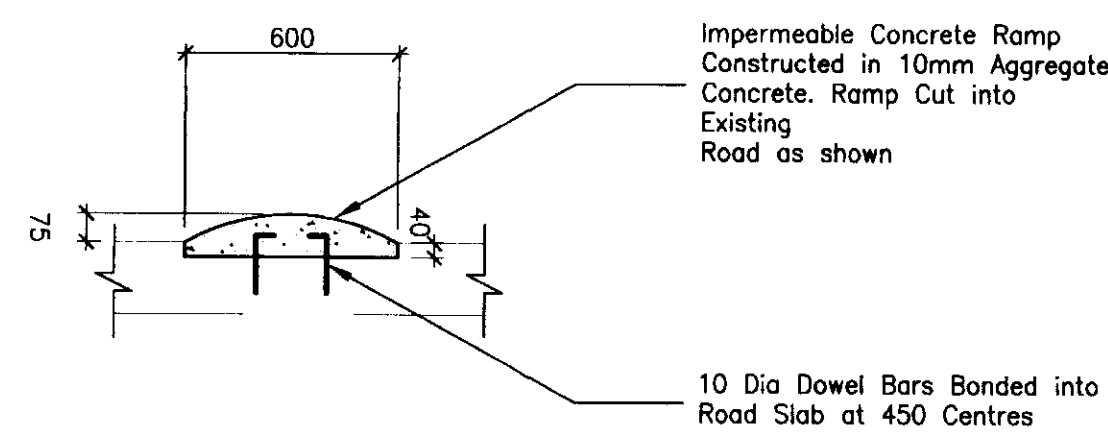


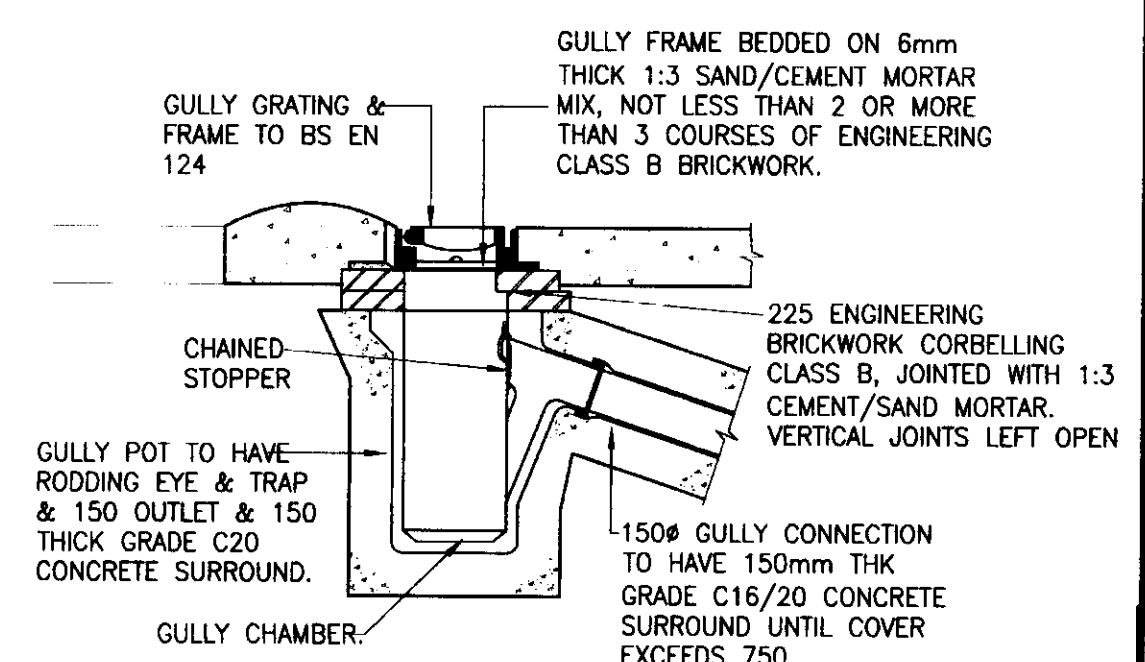
PLAN ON CHEMICAL DELIVERY AREA
SCALE 1:50



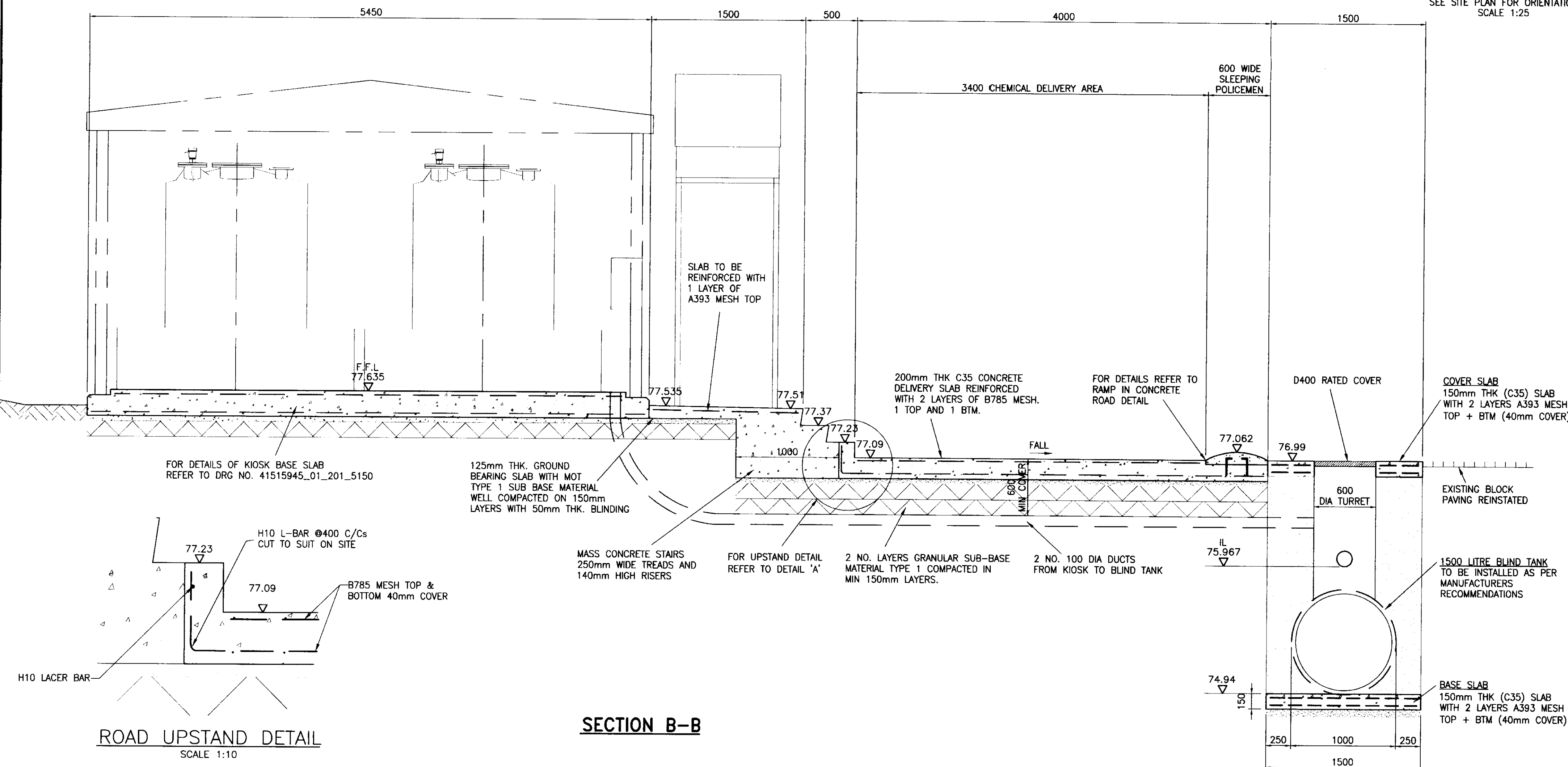
SECTION A-A



RAMP IN CONCRETE ROAD
SCALE 1:20



TYPICAL GULLY DETAIL
SEE SITE PLAN FOR ORIENTATION
SCALE 1:25



SECTION B-B

ROAD UPSTAND DETAIL
SCALE 1:10

DO NOT SCALE - IF IN DOUBT ASK

REFERENCE DRAWINGS

SITE LAYOUT	41515945/01/201/1060
KIOSK PLAN-CIVIL	41515945/01/201/5150

NOTES.

GENERAL :

- DO NOT SCALE FROM THIS DRAWING.
- ALL DIMENSIONS ARE IN MILLIMETRES (mm) & ALL LEVELS ARE IN METRES (m) AOD, UNLESS STATED OTHERWISE.
- ALL DIMENSIONS & LEVELS CHECKED ON SITE AND ANY DISCREPANCIES REPORTED TO G.H.A. Ltd.

CONCRETE :

1. CONCRETE GRADES :-

STRUCTURAL - GRADE C28/35A
BENCHING/BLINDING - GRADE C16/20

2. ALL EXPOSED CONCRETE EDGES HAVE 25x25mm CHAMFERS EXCEPT FOR THE FOLLOWING HORIZONTAL ARISE ABUTTING FLOORING AND COVERS. CHAMFERS EXTEND 150mm BELOW FINISHED GROUND LEVEL.

3. FAIR FINISH WORKED TYPE B SHALL BE APPLIED TO ALL EXPOSED FORMED CONCRETE SURFACES, EXTENDING TO 300mm BELOW FINISHED GROUND LEVEL, ALL OTHER EXPOSED SURFACES HAVE A STEEL FLOAT FINISH.

4. COVER TO ALL REINFORCEMENT TO BE 40mm UNO.

5. FOUNDATIONS TO BE BLINDED IMMEDIATELY FOLLOWING APPROVAL OF FORMATION TO PREVENT SOFTENING OF SUBGRADE.

6. EXPOSED FORMATION TO BE CHECKED TO ENSURE REASONABLE BEARING CAPACITY AND MINIMAL SUSCEPTIBILITY FOR SETTLEMENT. IF GROUND IS OF POOR OR INDETERMINATE QUALITY CONSULT THE ENGINEER.

7. ANY SOFT SPOTS TO BE REMOVED AND REPLACED WITH TYPE 1 SUBBASE COMPACTED IN ACCORDANCE WITH THE SPECIFICATION FOR HIGHWAY WORKS.

LEGEND.

	CHEMICAL DELIVERY AREA CONCRETE TO BE RESISTANT TO SODIUM HYPOCHLORITE AT A CONCENTRATION OF 14%.
--	---

CURRENT ISSUE INFORMATION

DATE	DRWN	CHKD	REV'D	ISSUE
13/08/09	KP	PN	PN	A

FOR CONSTRUCTION

NO: 182291/1167

PLANNING DEPARTMENT OFFICE COPY

25 SEP 2009

DATE

NO: 182291/1167

PLANNING DEPARTMENT OFFICE COPY

25 SEP 2009

DATE

NO: 182291/1167

PLANNING DEPARTMENT OFFICE COPY

25 SEP 2009

DATE

NO: 182291/1167

PLANNING DEPARTMENT OFFICE COPY

25 SEP 2009

DATE

NO: 182291/1167

PLANNING DEPARTMENT OFFICE COPY

25 SEP 2009

DATE

NO: 182291/1167

PLANNING DEPARTMENT OFFICE COPY

25 SEP 2009

DATE

NO: 182291/1167

PLANNING DEPARTMENT OFFICE COPY

25 SEP 2009

DATE

NO: 182291/1167

PLANNING DEPARTMENT OFFICE COPY

25 SEP 2009

DATE

NO: 182291/1167

PLANNING DEPARTMENT OFFICE COPY

25 SEP 2009

DATE

NO: 182291/1167

PLANNING DEPARTMENT OFFICE COPY

25 SEP 2009

DATE

NO: 182291/1167

PLANNING DEPARTMENT OFFICE COPY

25 SEP 2009

DATE

NO: 182291/1167

PLANNING DEPARTMENT OFFICE COPY

25 SEP 2009

DATE

NO: 182291/1167

PLANNING DEPARTMENT OFFICE COPY

25 SEP 2009

DATE

NO: 182291/1167

PLANNING DEPARTMENT OFFICE COPY

25 SEP 2009

DATE

NO: 182291/1167

PLANNING DEPARTMENT OFFICE COPY

25 SEP 2009