

Details

Construction
Walls and roof to be constructed of non-combustible material capable of achieving min. 60 minute fire resistance. Doors to achieve min. 30 minute fire resistance. Fly and vermin proof ventilation to be provided at base and head of walls.

Internally walls to be lined with a hard impervious material suitable for washing down.

Floor to be min 100mm thick hard, paved, impervious continuous surface

Cleaning / drainage provision
External tap to be located within bin store for cleaning purposes with drainage to trapped gully connected to foul drainage system

Surface drainage to be provided at entrance to bin store to extend to new soakaway.

Interior lighting
Interior lighting to be sealed bulkhead fittings rated to IP65 in BS EN 60529:1992 operated by PIR sensor.

Security
Combination locks to be fitted to each set of double doors.

Labelling
Storage facility to be labeled with which households are allowed access

Waste receptacles to be clearly labeled

NORTHAW HOUSE – FLAT & HOUSE BIN ALLOCATION

Flat 1	1no. bedroom	100L
Flat 2	1no. bedroom	100L
Flat 3	2no. bedroom	170L
Flat 4	2no. bedroom	170L
Flat 5	2no. bedroom	170L
Flat 6	2no. bedroom	170L
Flat 7	3no. bedroom	240L
Flat 8	1no. bedroom	100L
Flat 9	2no. bedroom	170L
Flat 10	2no. bedroom	170L
Flat 11	1no. bedroom	100L
TOTAL		1660L

House 13 Individual bin stores

House 14 Individual bin stores

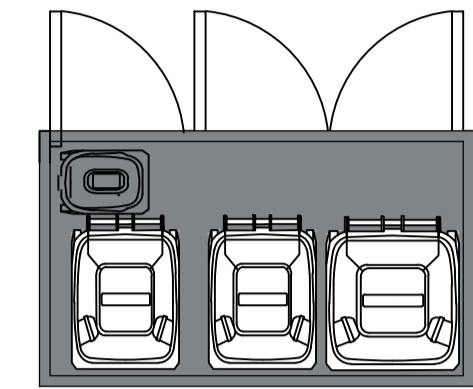
Stables Individual bin stores

Refuse Strategy - Houses

Please read in conjunction with Transport Statement issued in planning application.

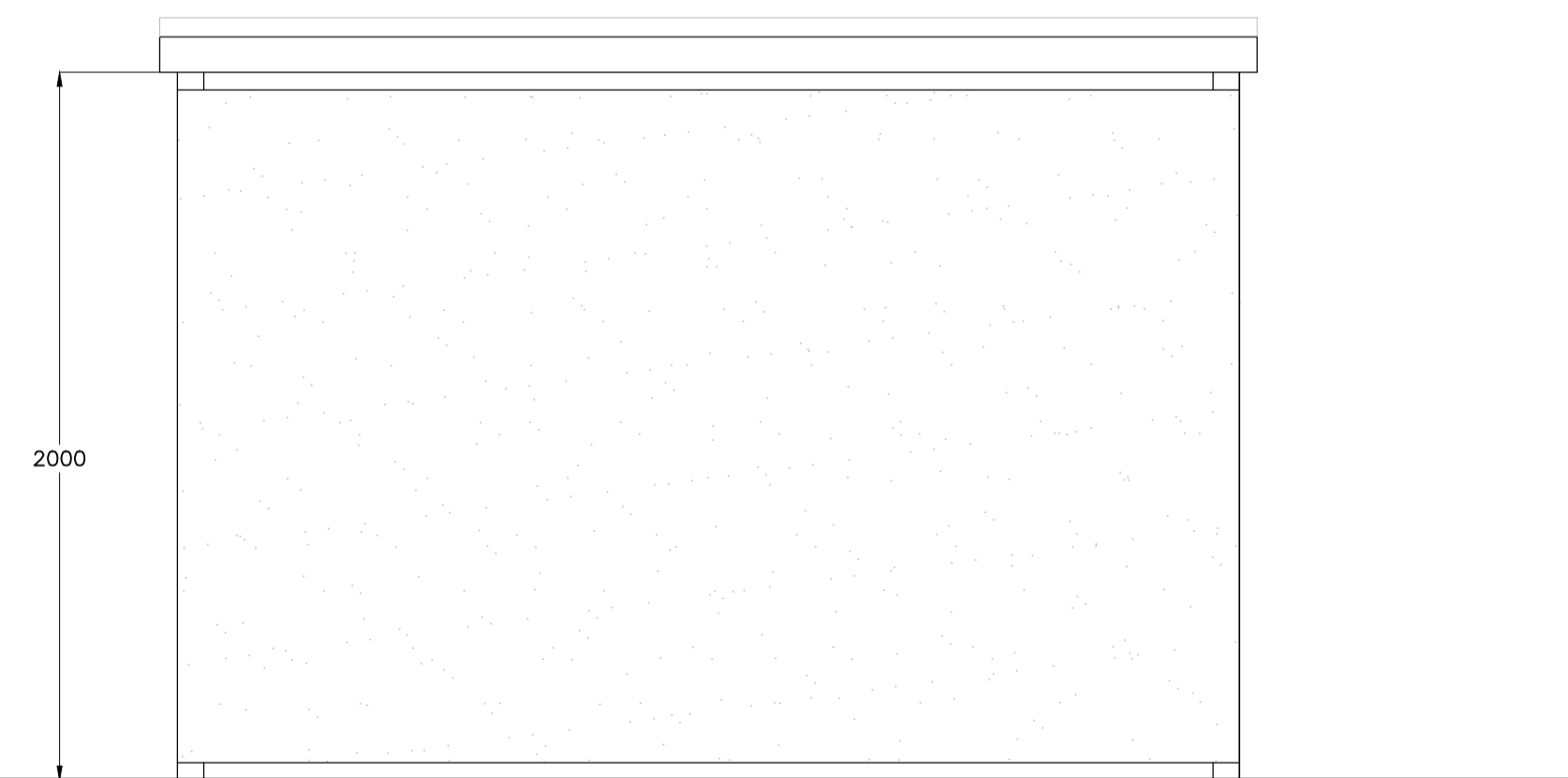
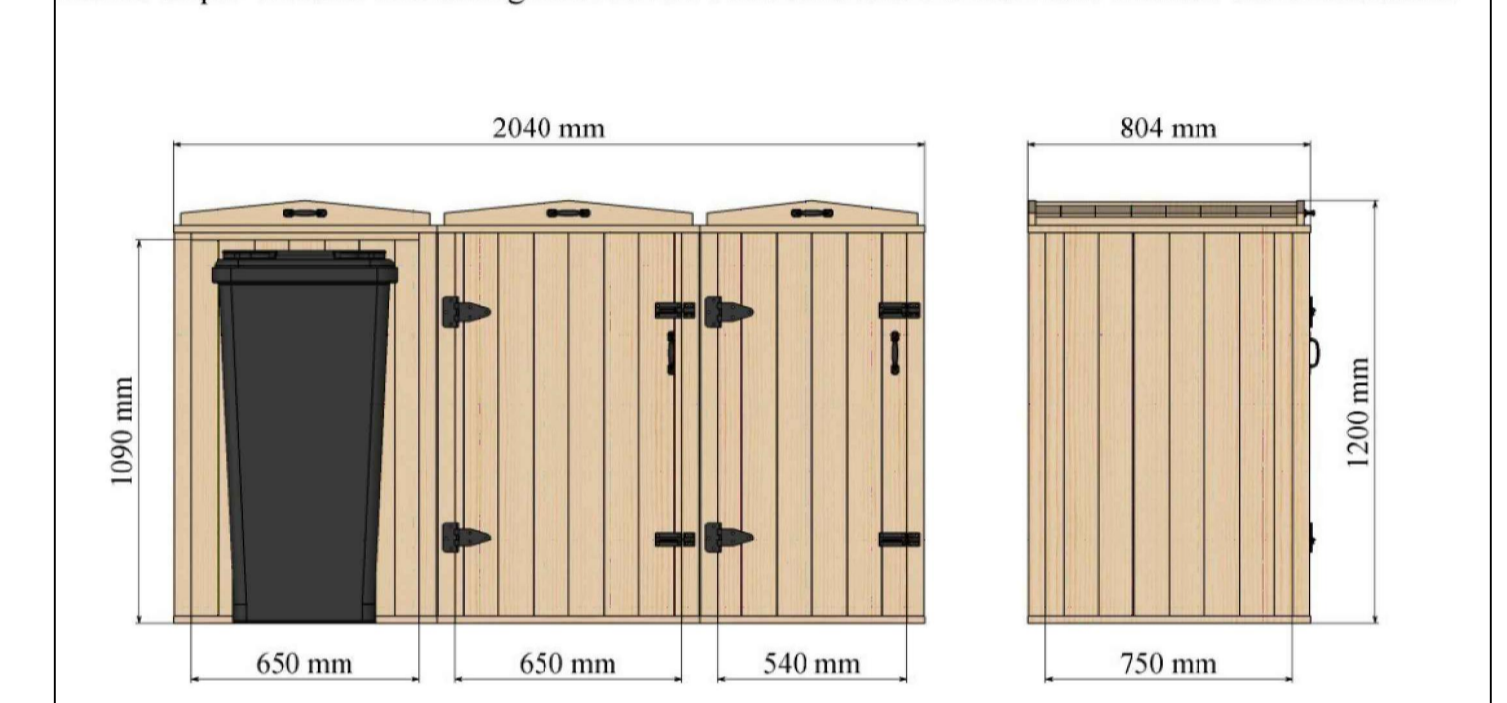
Below denotes location of Wheelie bin storage chest. Within 10m of road side and 30m of dwelling.

- Minimum requirements per dwelling:
- 1no. 240L Household waste bin
- 1no. 240L Compost bin
- 1no. 180L Recycling bin

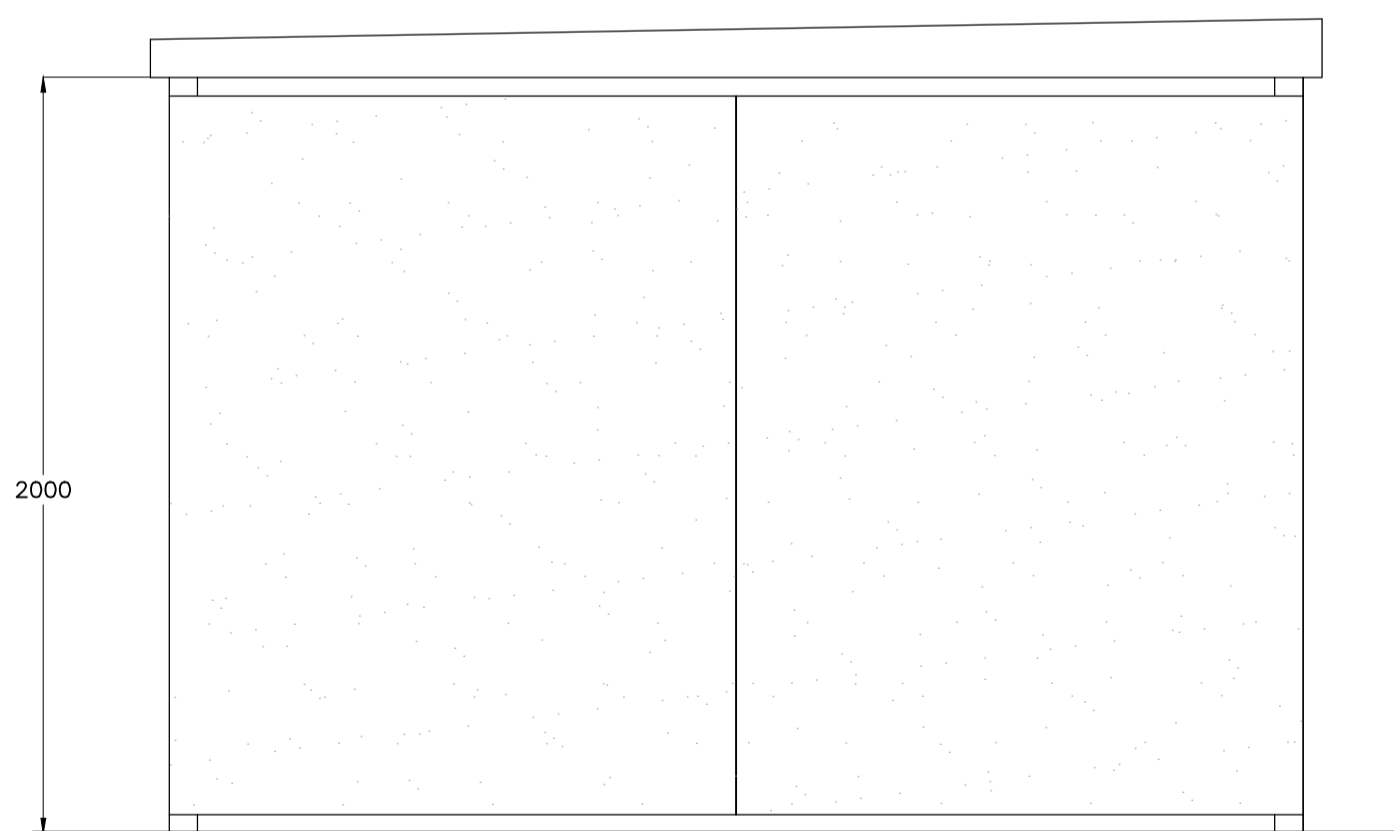


Wheelie bin storage chest stored on hard landscaping.
Proposed technical data dimensions below;

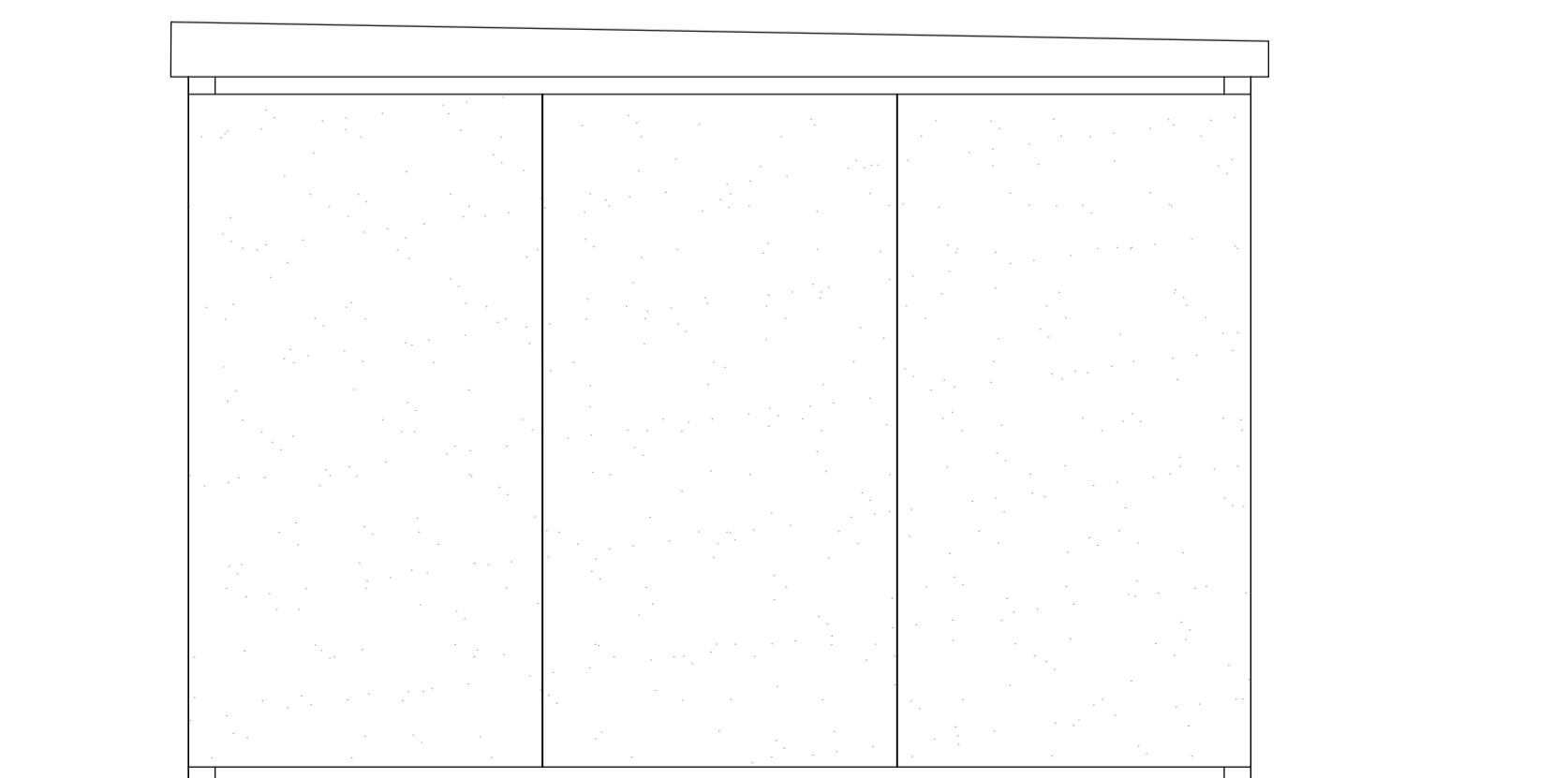
Bellus Triple Wheelie Bin Storage for 2 x 240 Litre Bins and 1 x 180 Litre Wheelie Bin Dimensions



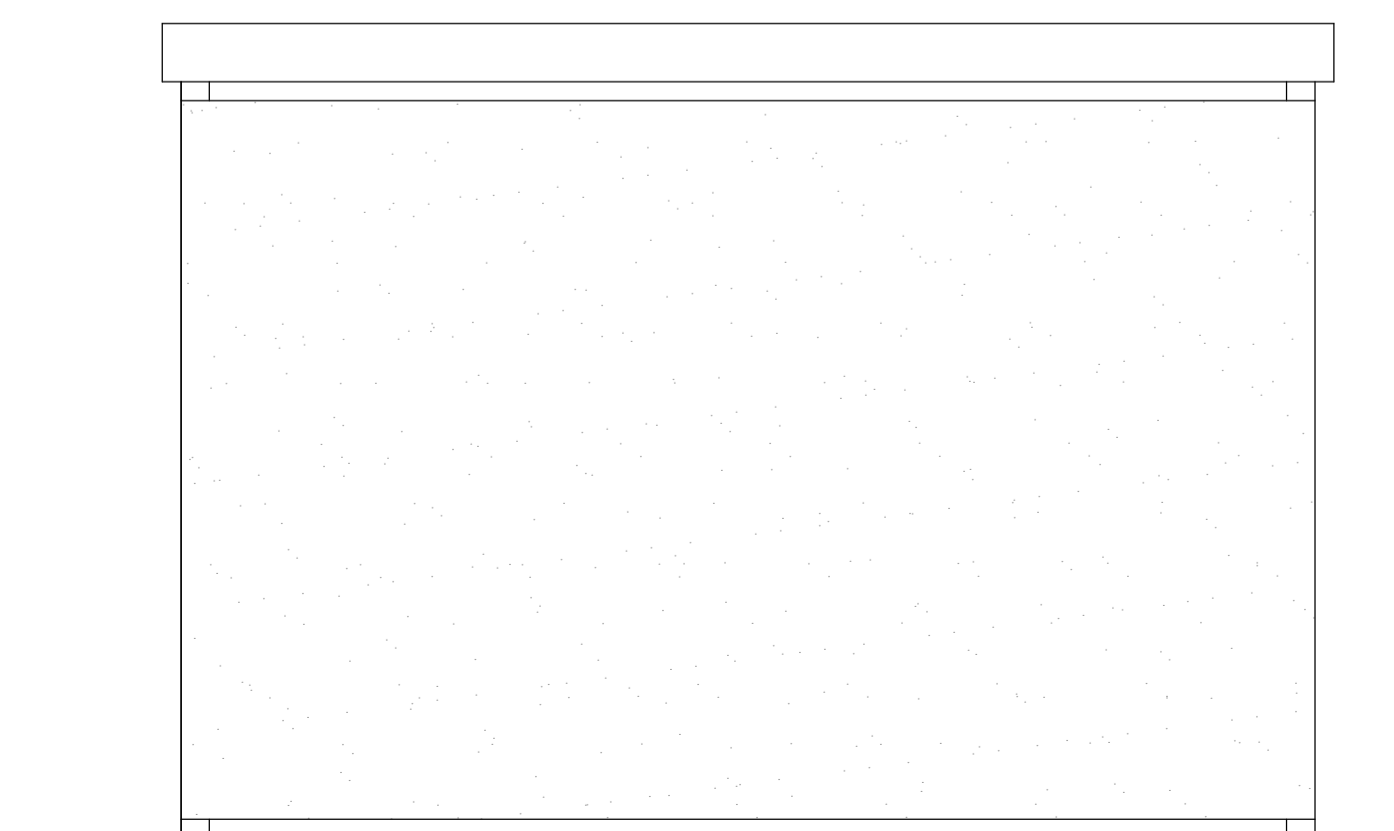
South-East Elevation



North - East Elevation



South - West Elevation



North-West Elevation

revision	description	date
Rev A.	Details amended	Oct 2022
Rev B.	Details amended	Nov 2022
Rev C.	Bin details added	Nov 2022

Client: LW Developments

Job Title: Northaw House

Drawing Title: Bin Store Details

Scale: 1:20 Drawn By: A1 Date: Sept 2022

Job Number: 6717 Drawing Number: 57C Status: Planning

whitworth

Chartered Architects & Chartered Building Surveyors
Unit 12 Park Farm, Forham St Genevieve, Bury St Edmunds, IP28 6TS
01284 760421 info@whitworth.co.uk www.whitworth.co.uk

NOTE:
Do not scale from this drawing except for the purposes of planning. Confirm all dimensions on site. Refer any discrepancies to the Architect before work is put in hand. Read this drawing in conjunction with the relevant sections of the specification, schedule of works and other drawings.

This drawing is copyright of whitworth.

