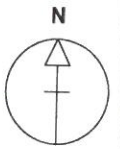




TITLE NUMBER  
**HD443757**



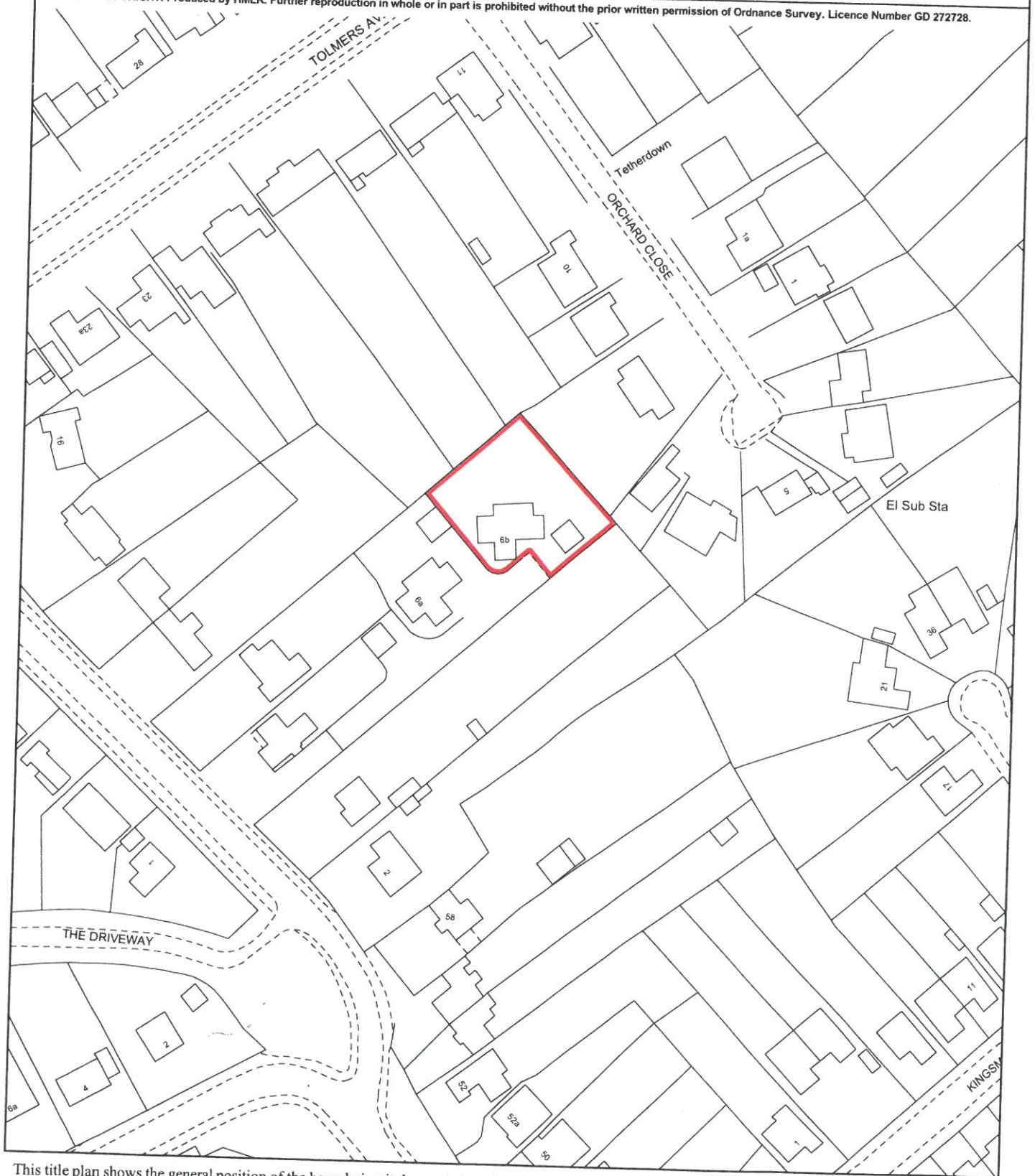
**HERTFORDSHIRE : WELWYN HATFIELD**

ORDNANCE SURVEY MAP REFERENCE:

TL3003SW

SCALE 1:1250 Enlarged from 1/2500

©CROWN COPYRIGHT. Produced by HMLR. Further reproduction in whole or in part is prohibited without the prior written permission of Ordnance Survey. Licence Number GD 272728.

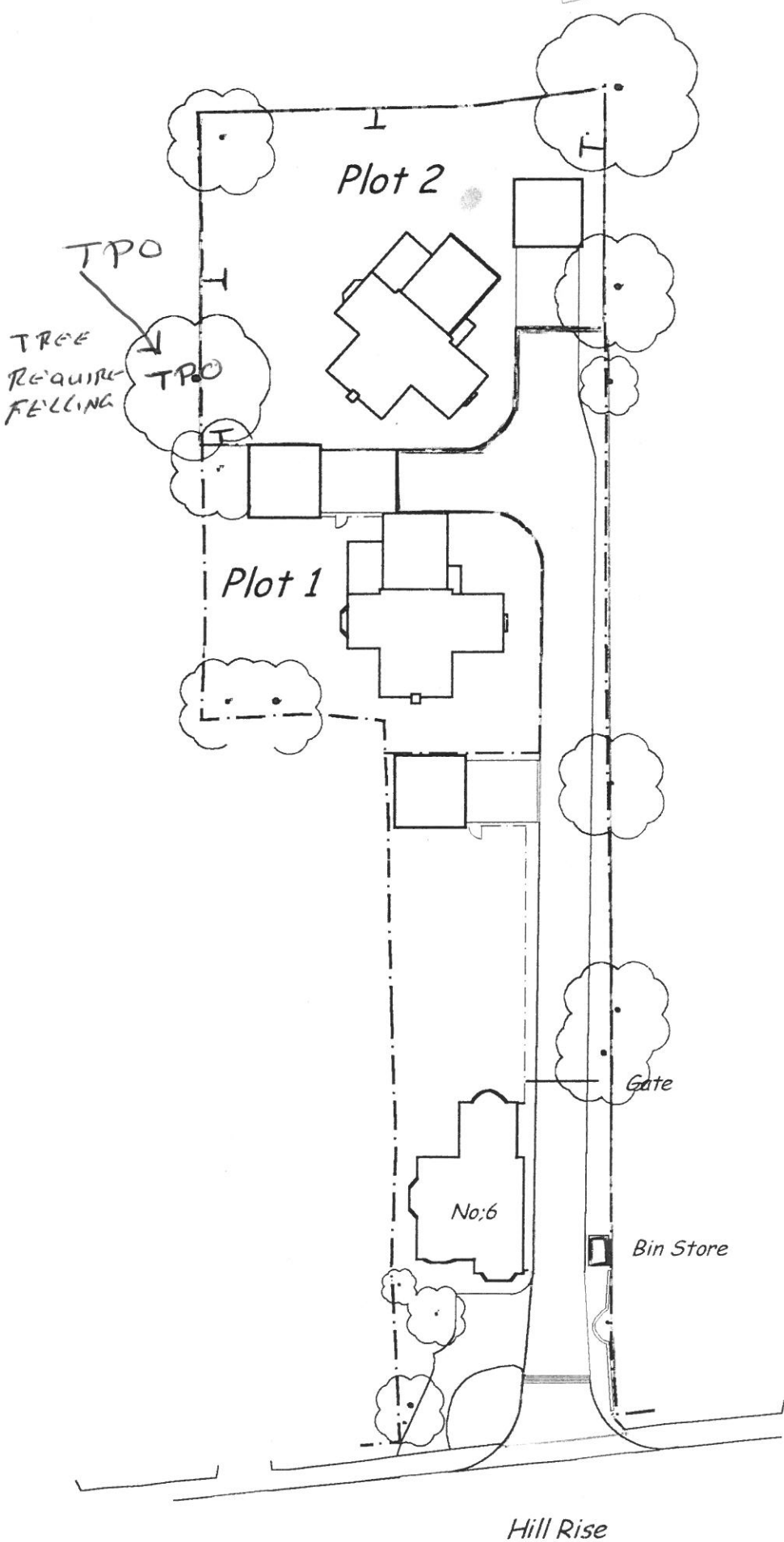


This title plan shows the general position of the boundaries: it does not show the exact line of the boundaries. Measurements scaled from this plan may not match measurements between the same points on the ground. For more information see Land Registry Public Guide 7 - Title Plans.

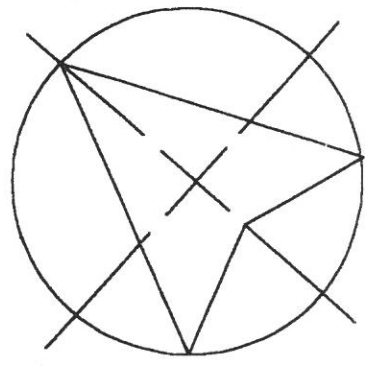
This official copy shows the state of the title plan on **26 September 2005 at 14:02:28**. It may be subject to distortions in scale. Under s.67 of the Land Registration Act 2002, this copy is admissible in evidence to the same extent as the original. Issued on 26 September 2005.

This title is dealt with by the **Stevenage District Land Registry**.





NORTH



<b>HERTFORD PLANNING SERVICE</b>	
	37 Castle Street Hertford Herts SG14 1HH
	Tel:- (01992) 552173 Fax:- (01992) 587643
	<b>Project</b> Development at R/O 6 Hill Rise Cuffley
<b>Drawing</b>	<b>Transfer Plan</b>
<b>Date</b> Oct 04	
<b>Scale</b> 1:500	6078 (A4) 350a
<b>Drawn</b> (Contact) mRn	