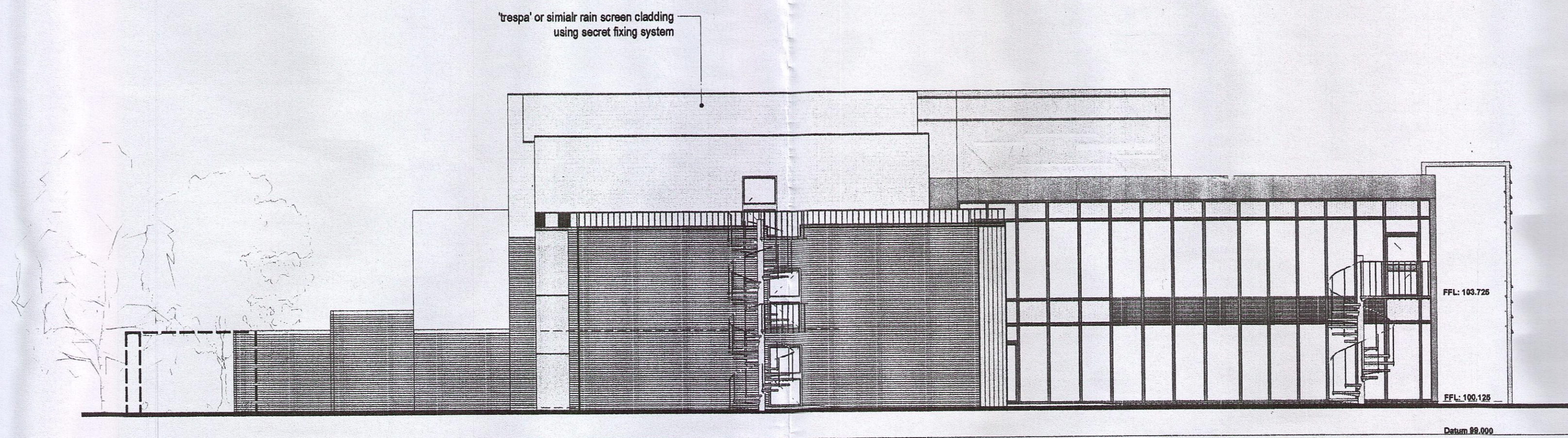
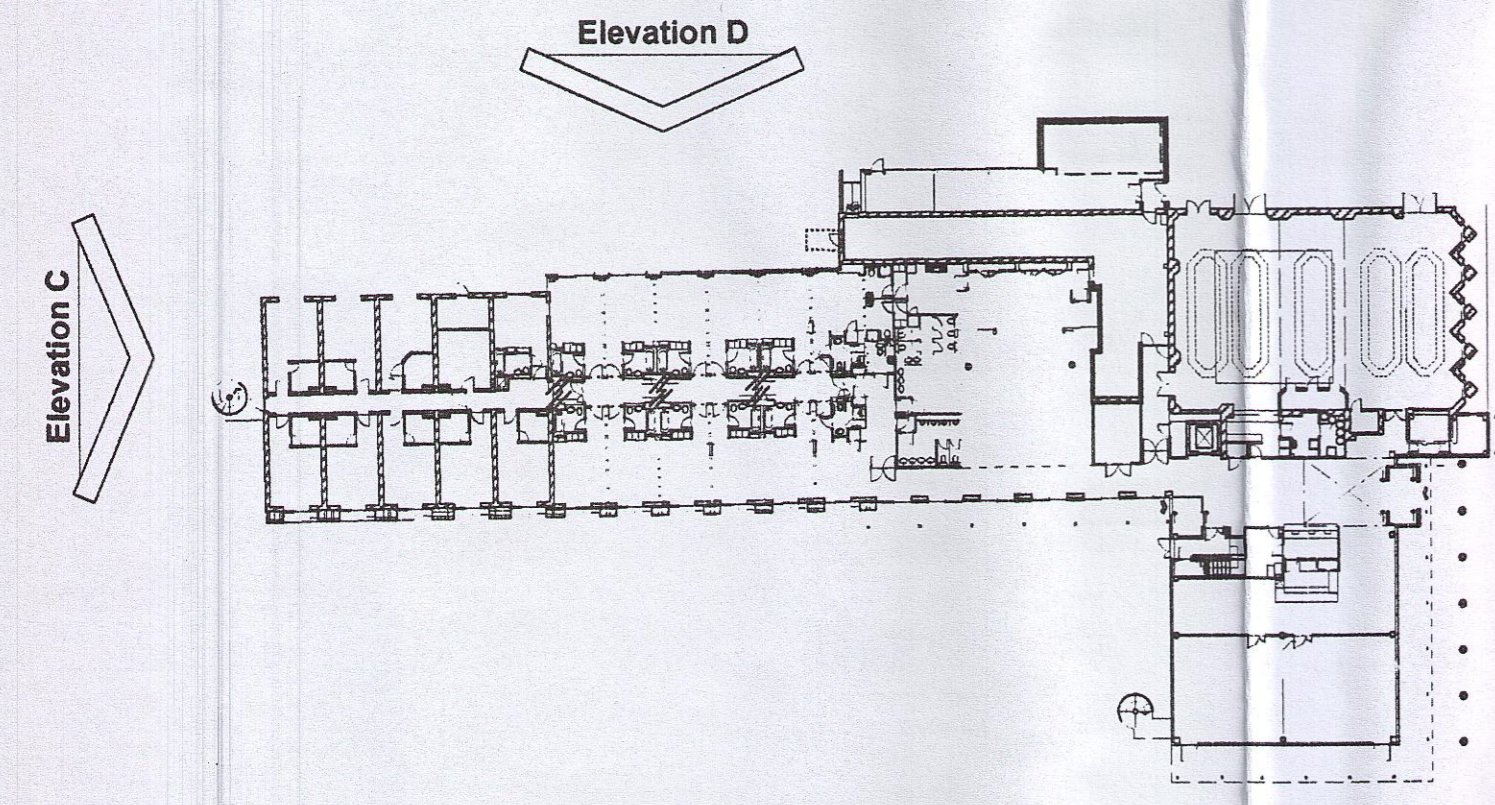


notes

revisions

rev: a
 date: 18.07.07
 second floor ffl raised by 215mm (upper section) & 185mm (lower section), parapet heights amended as a result, extent of new build amended to reflect revised position of extended stair from first floor to second floor on elev C, window size amended to reflect internal changes to room type elev D, side elevation cladding material changed from timber to 'trespa', rear elevation cladding material changed from brick to 'trespa', escape stair on elev C&D removed.
 drawn: jpg
 checked:

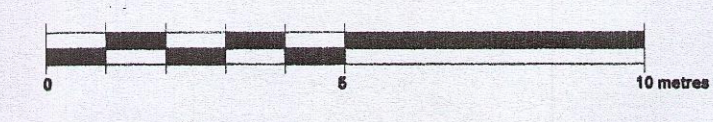
rev: b
 date: 10.08.07
 extent of gym elevation revised to reflect increase in size on elev D
 drawn: jpg
 checked:



Proposed Side Elevation
 Elevation C



Proposed Rear Elevation
 Elevation D



PLANNING

Beales Hotels
 Extension of Beales Hotel, Hatfield
 Proposed Elevations C and D

scale 1:125 at A1 A05.229.P.009.B
 drawn KW checked date 10.05
© the copyright of this drawing is reserved with The Design Buro and must not be copied or reproduced without written permission. All other drawings remain the property of the Design Buro.