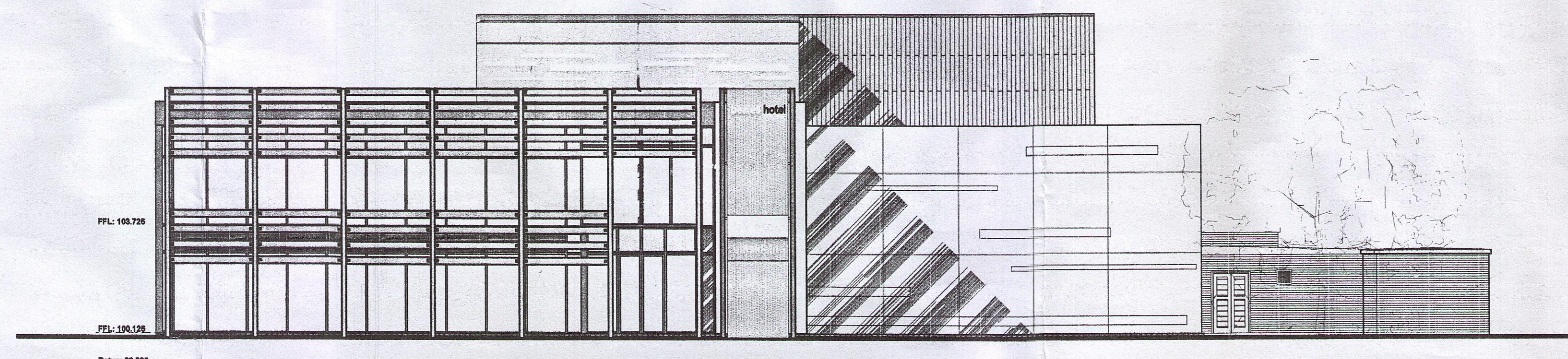
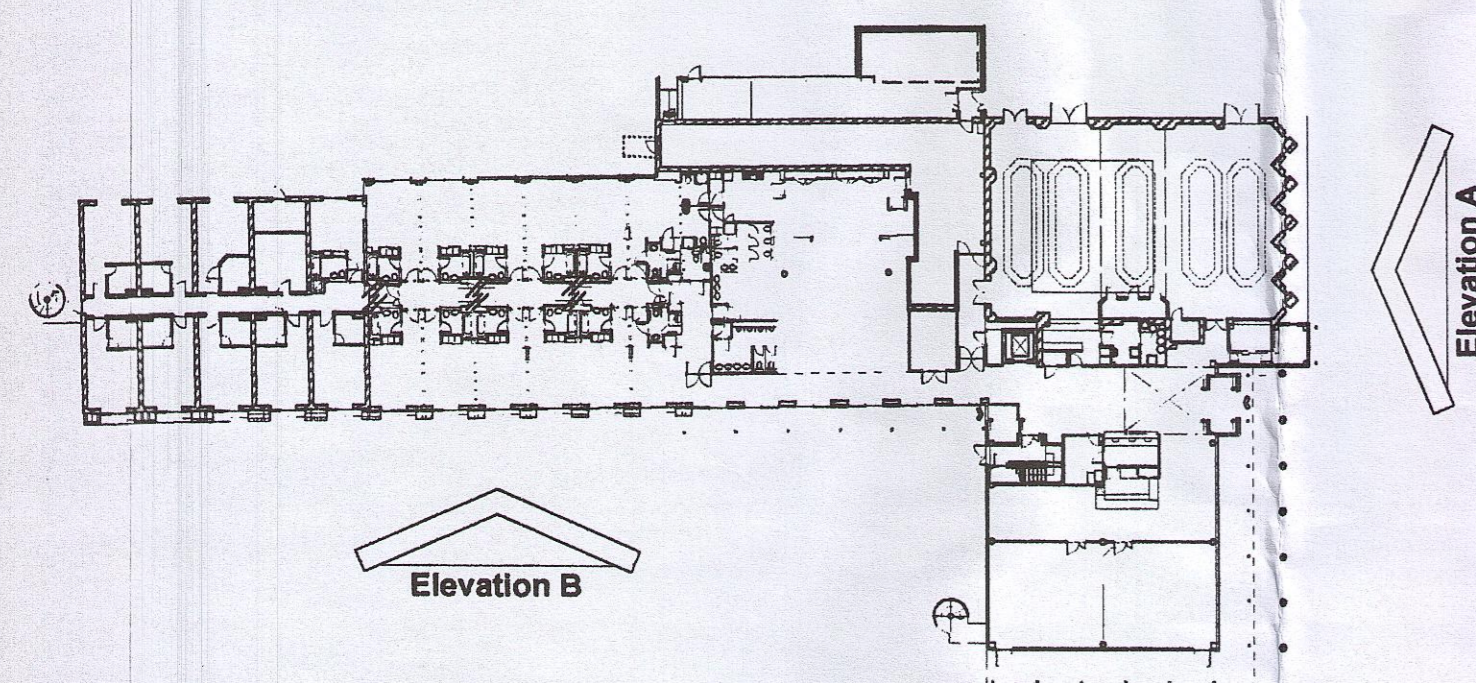


notes

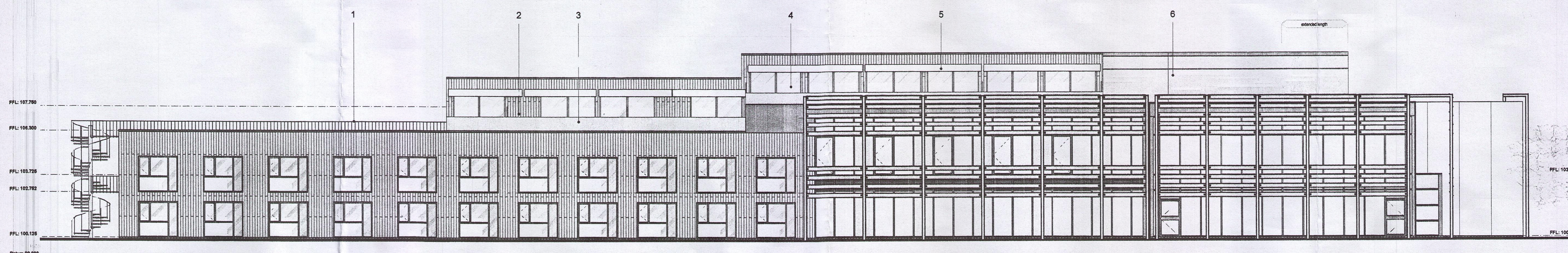
revisions

rev: a
date: 18.07.07
second floor ffl raised by 215mm (upper section) & 185mm (lower section),
parapet heights amended as a result,
extent of new build amended to reflect
revised position of extended stair from
first floor to second floor on elev A,
window position and sizes amended to
reflect internal changes to room/suite
types on elev B, escape stair on elev A
removed
drawn: jpg
checked:

rev: b
date: 10.08.07
extent of gym elevation revised to
reflect increase in size on elev B
drawn: jpg
checked:

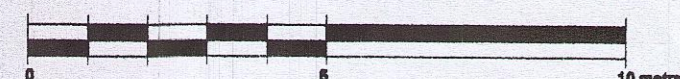


Proposed Front Elevation
Elevation A



Proposed Side Elevation
Elevation B

- Key:
- 1 metal railing
 - 2 cedar cladding to match existing
 - 3 frosted glass panel
 - 4 glass to match existing bedroom windows
 - 5 fabric canopy
 - 6 frosted glass with transparent strips to match existing screen on elevation A



PLANNING

Beales Hotels
Extension of Beales Hotel, Hatfield

Proposed Elevations A and B

scale 1:125 at A1 A05.229.P.008.B
drawn KW checked date 10.05

© the copyright of this drawing is vested with The Design Partnership and shall remain the property of the Design Partnership. All rights reserved. No part of this drawing may be reproduced without the prior written consent of the Design Partnership.