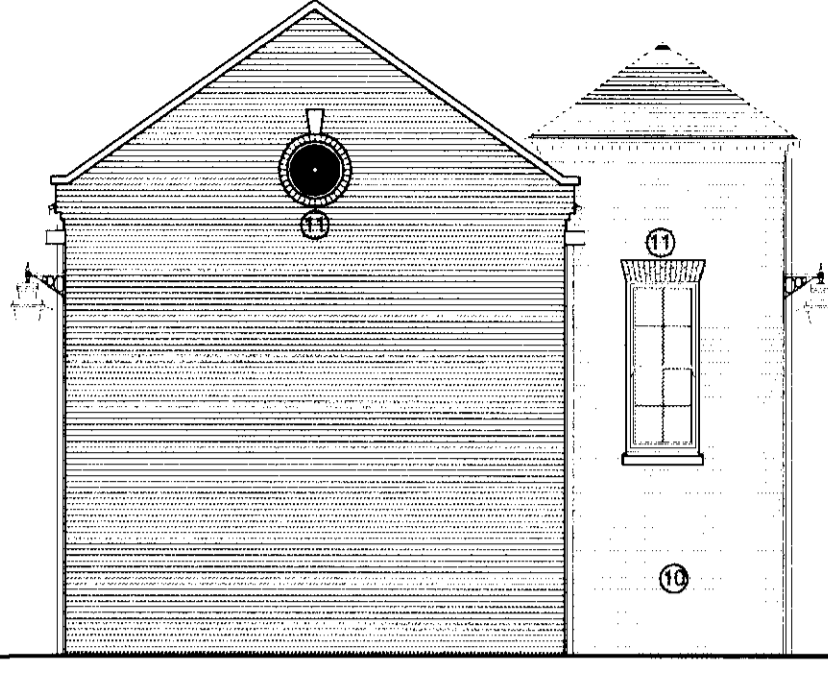
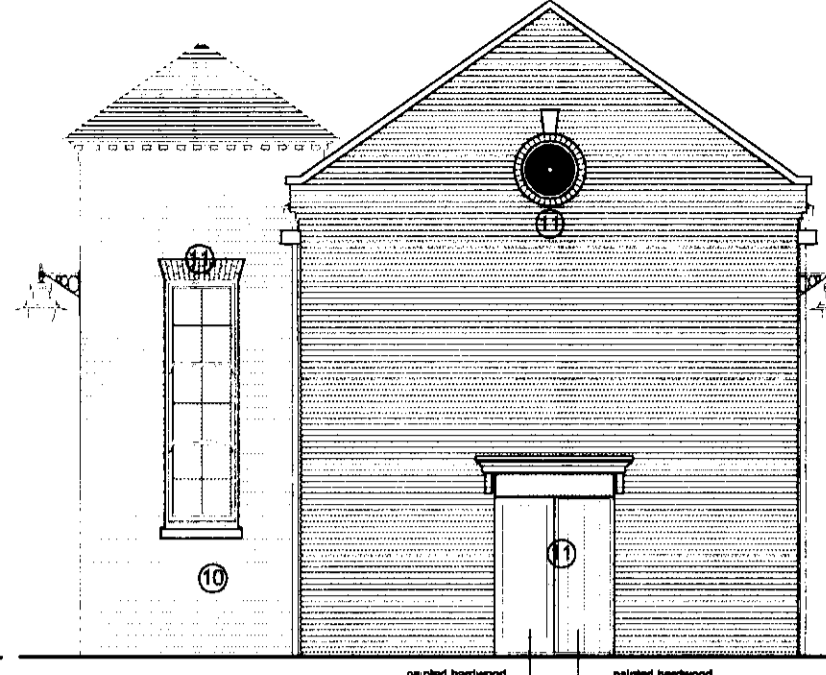
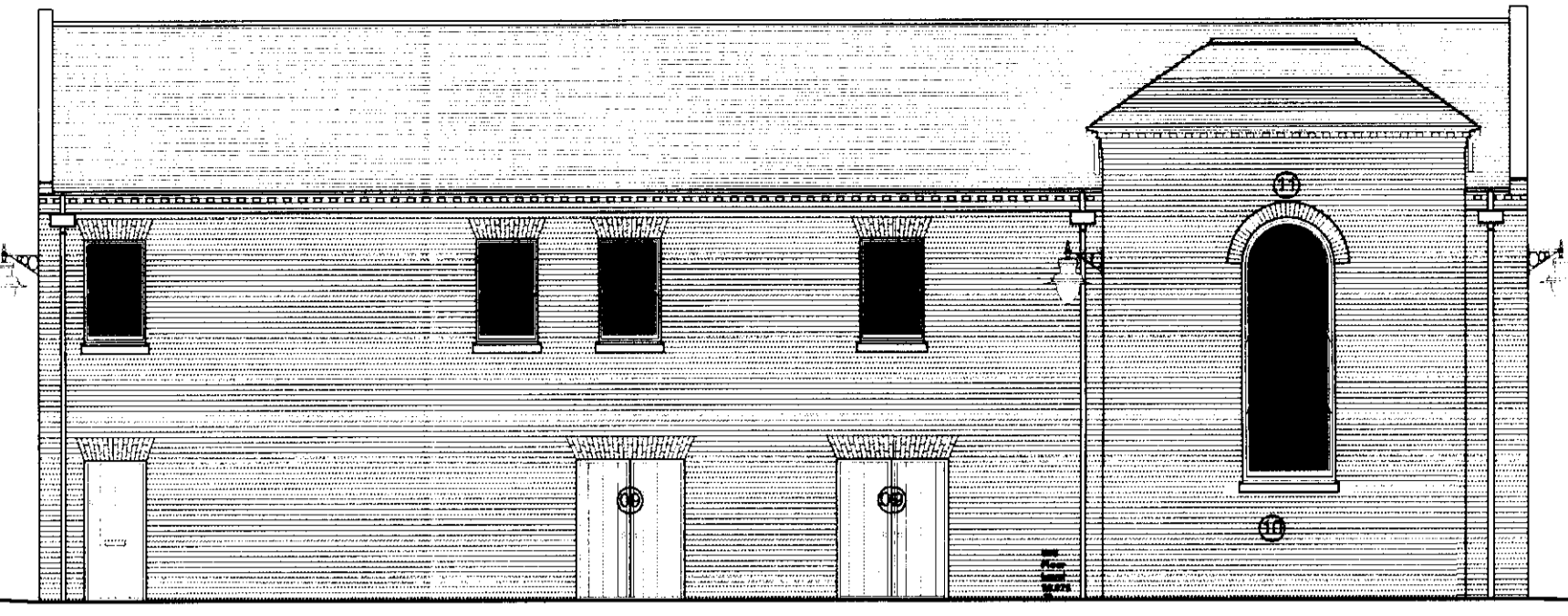
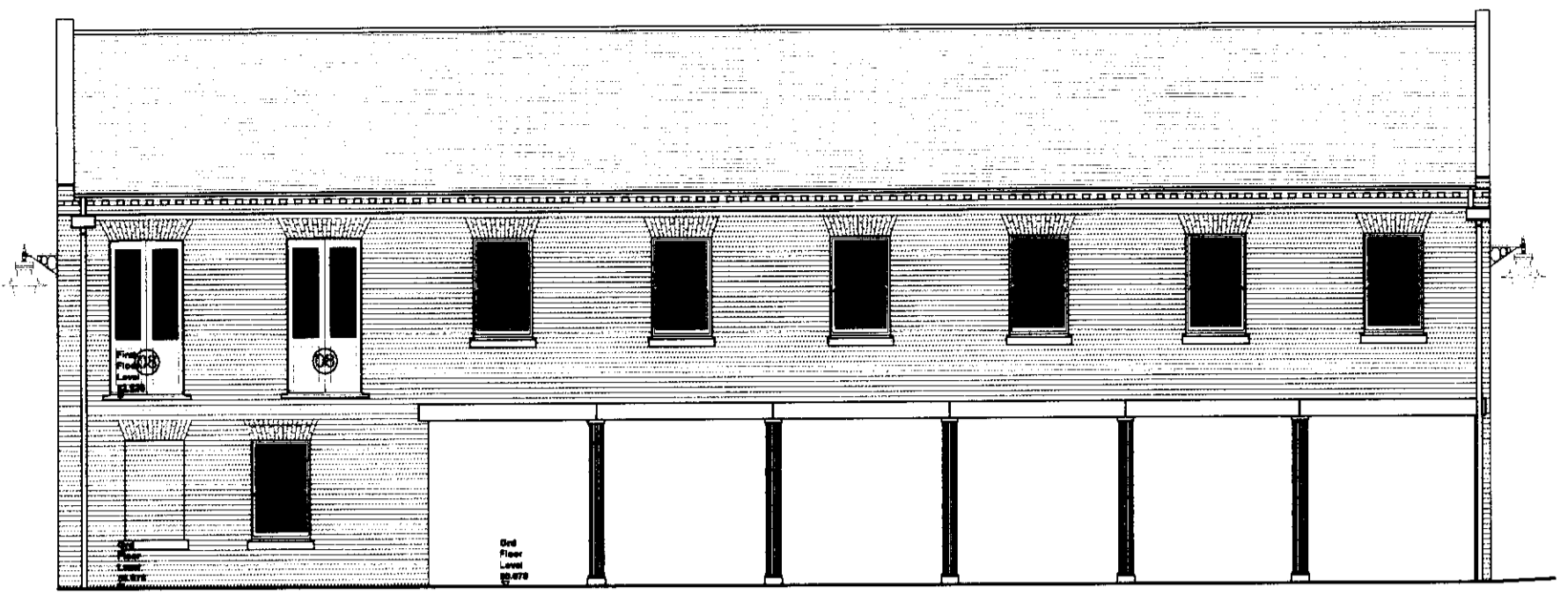


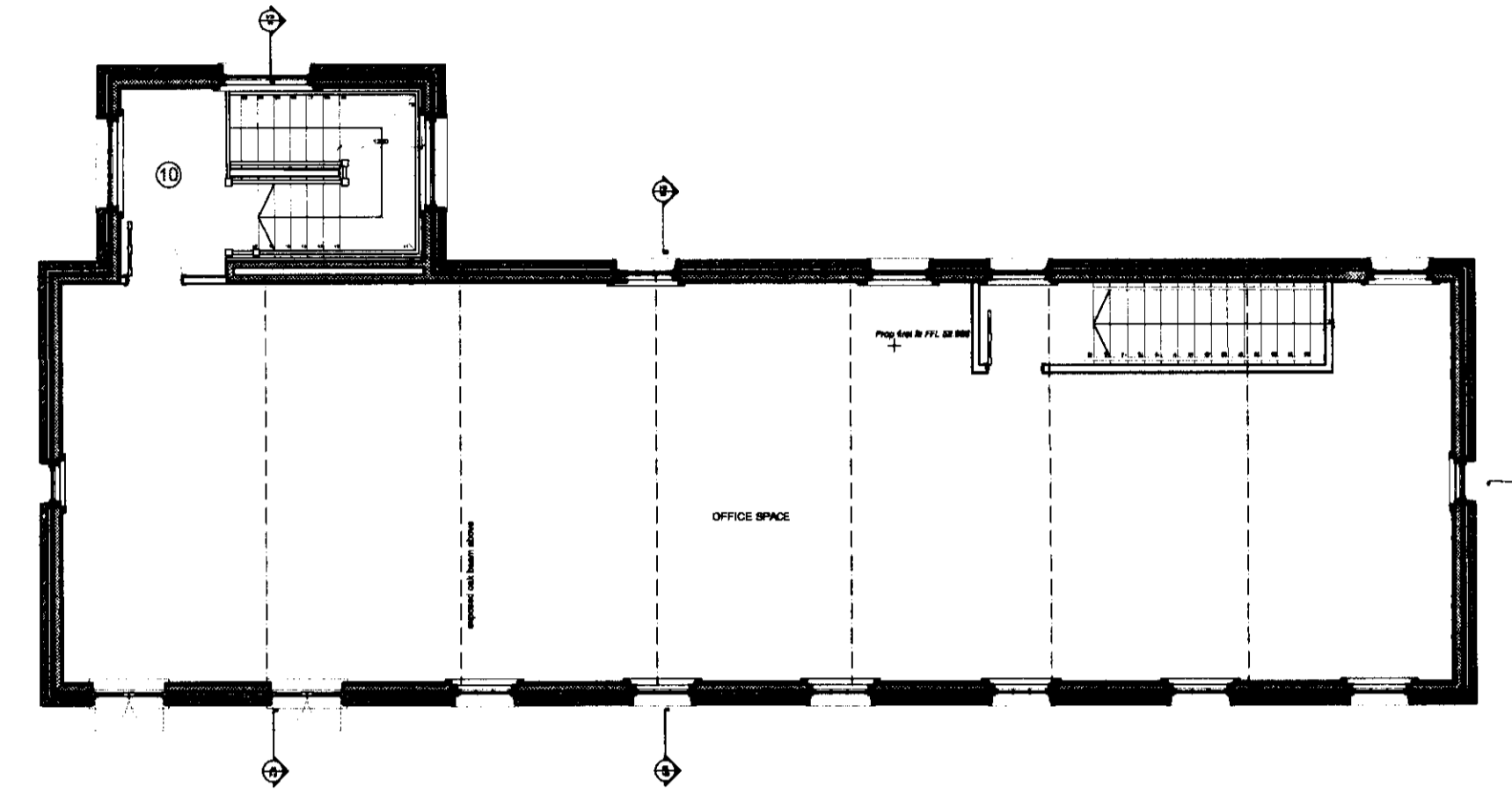
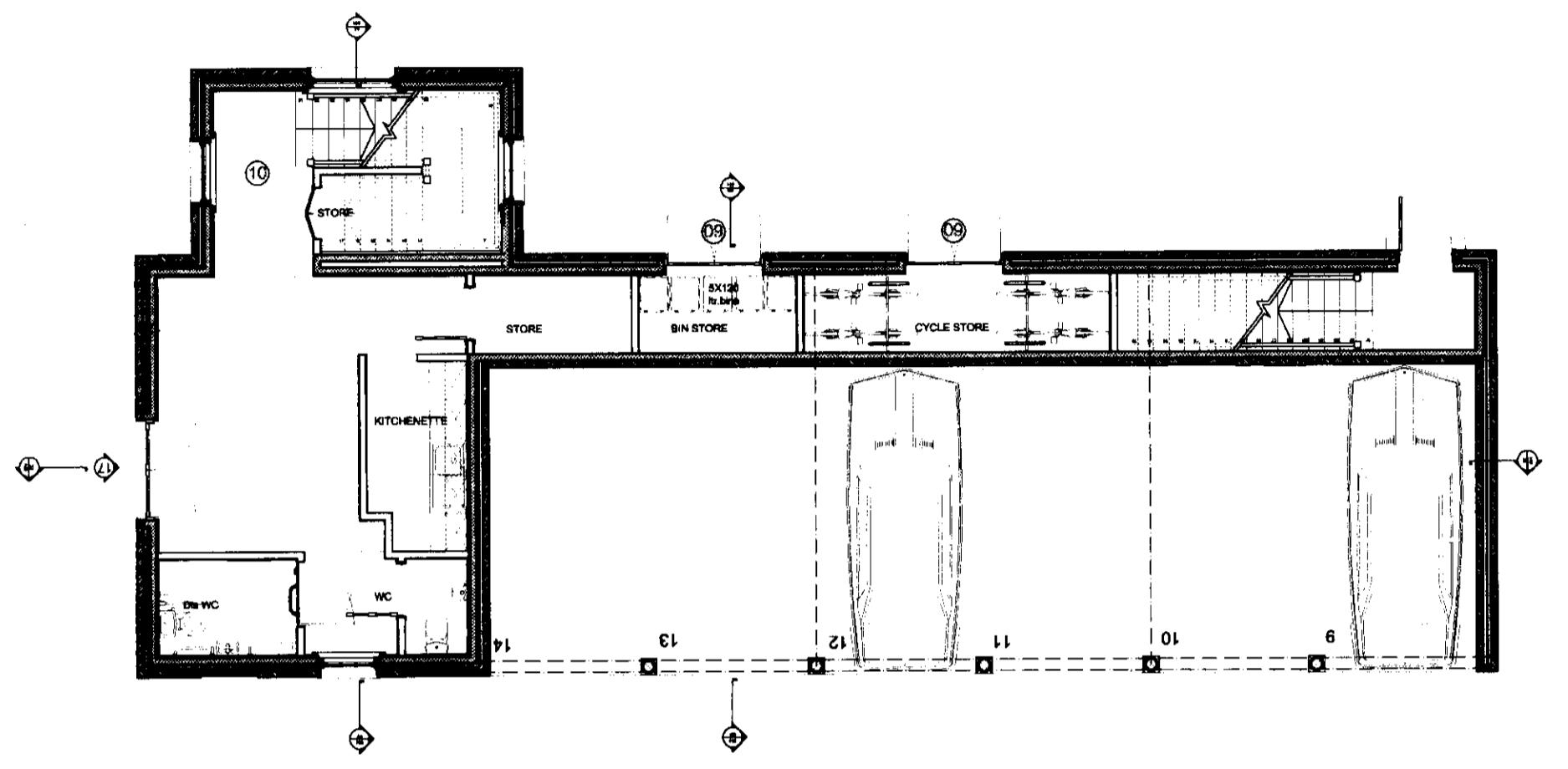
USE FIGURED DIMENSIONS ONLY  
DO NOT SCALE FROM THIS DRAWING  
ALL DIMENSIONS MUST BE CHECKED ON SITE ANY  
DISCREPANCIES MUST BE REPORTED BACK TO THE ARCHITECT  
THIS DRAWING AND ANY DESIGNS INDICATED THEREON ARE THE  
COPYRIGHT OF BROOKS / MURRAY ARCHITECTS  
ALL RIGHTS ARE RESERVED.  
NO PART OF THIS WORK MAY BE PRODUCED WITHOUT PRIOR  
PERMISSION IN WRITING FROM BROOKS / MURRAY ARCHITECTS



REAR ELEVATION

NORTH ELEVATION

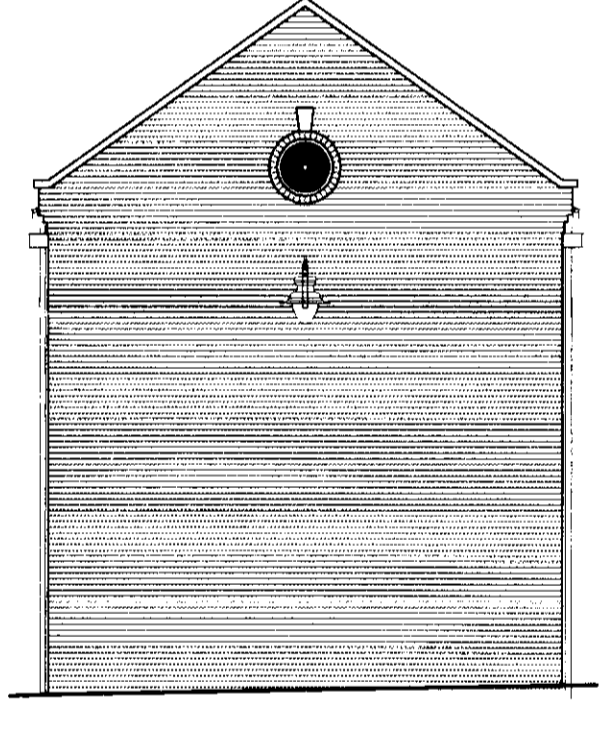
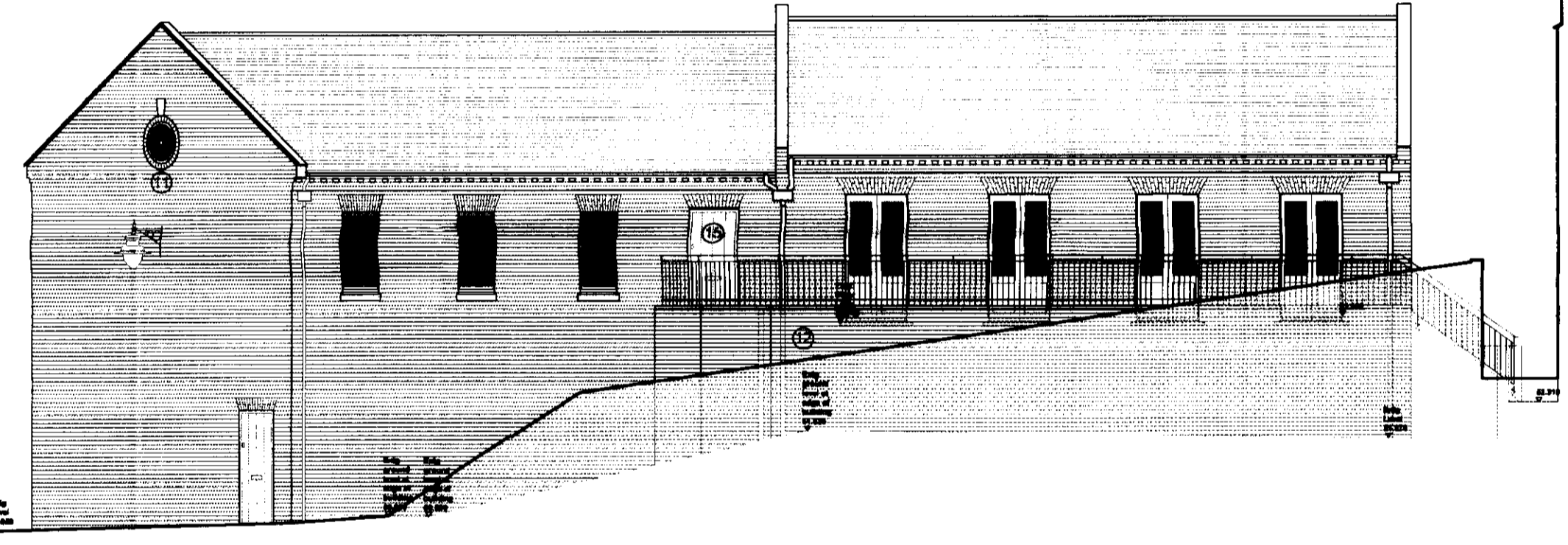
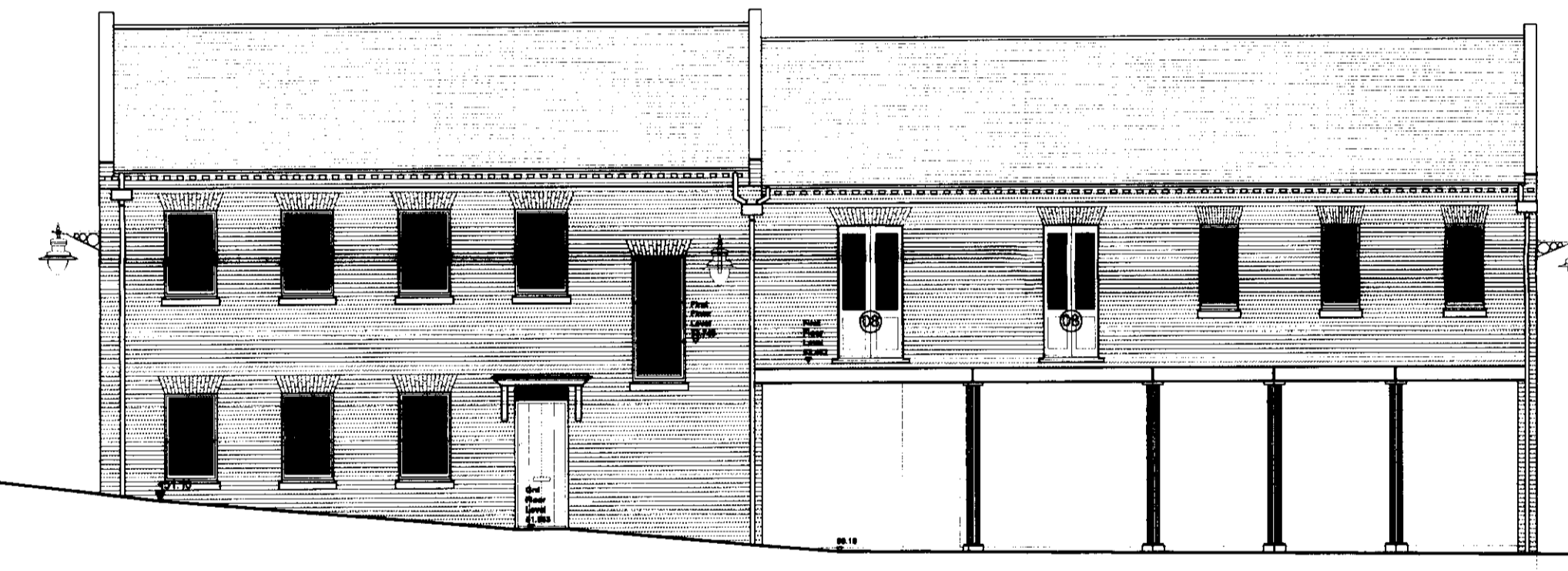
SOUTH ELEVATION



**UNIT 17**  
USAGE CLASS B1  
200.67m<sup>2</sup>

**LIST OF PLANNING AMENDMENTS**

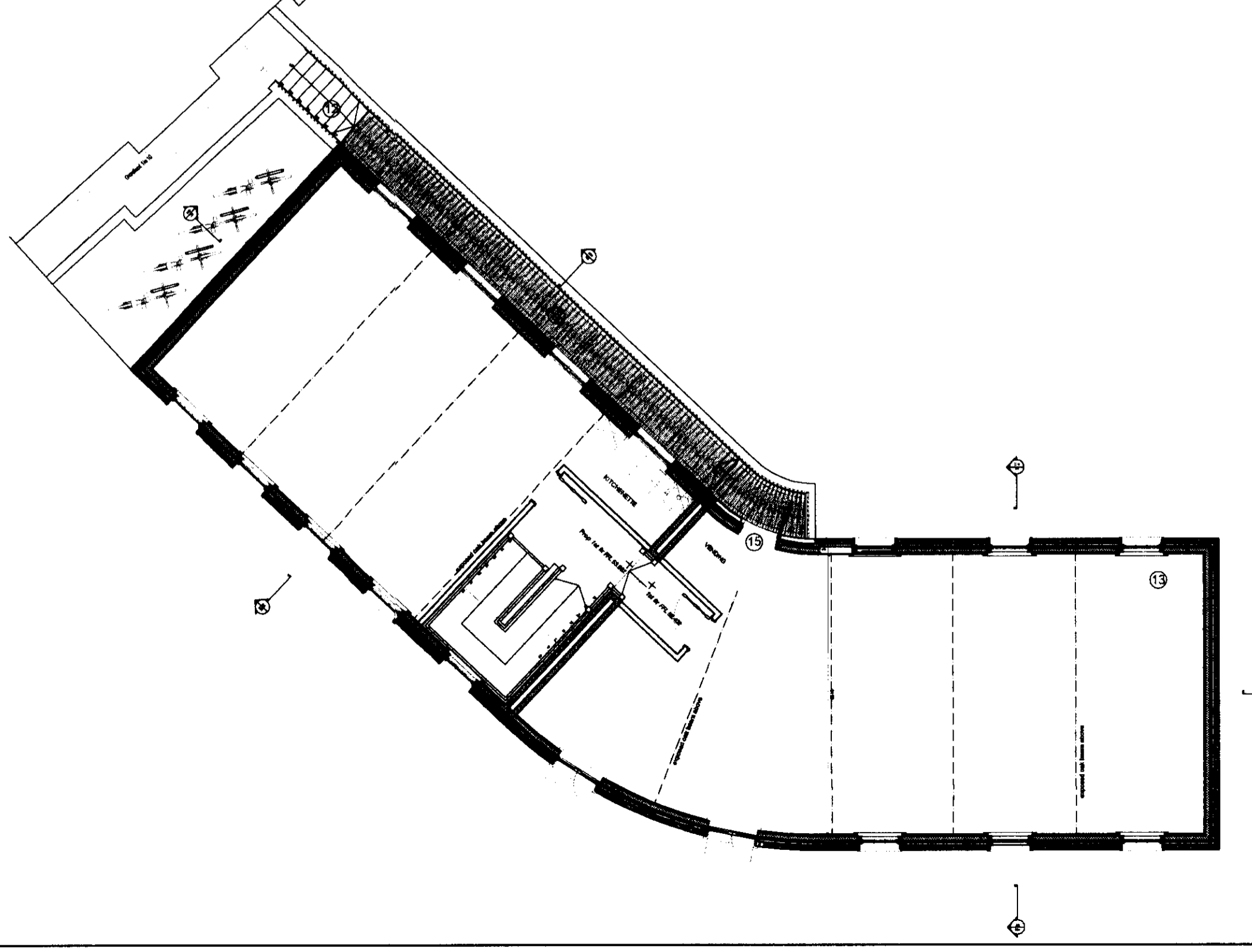
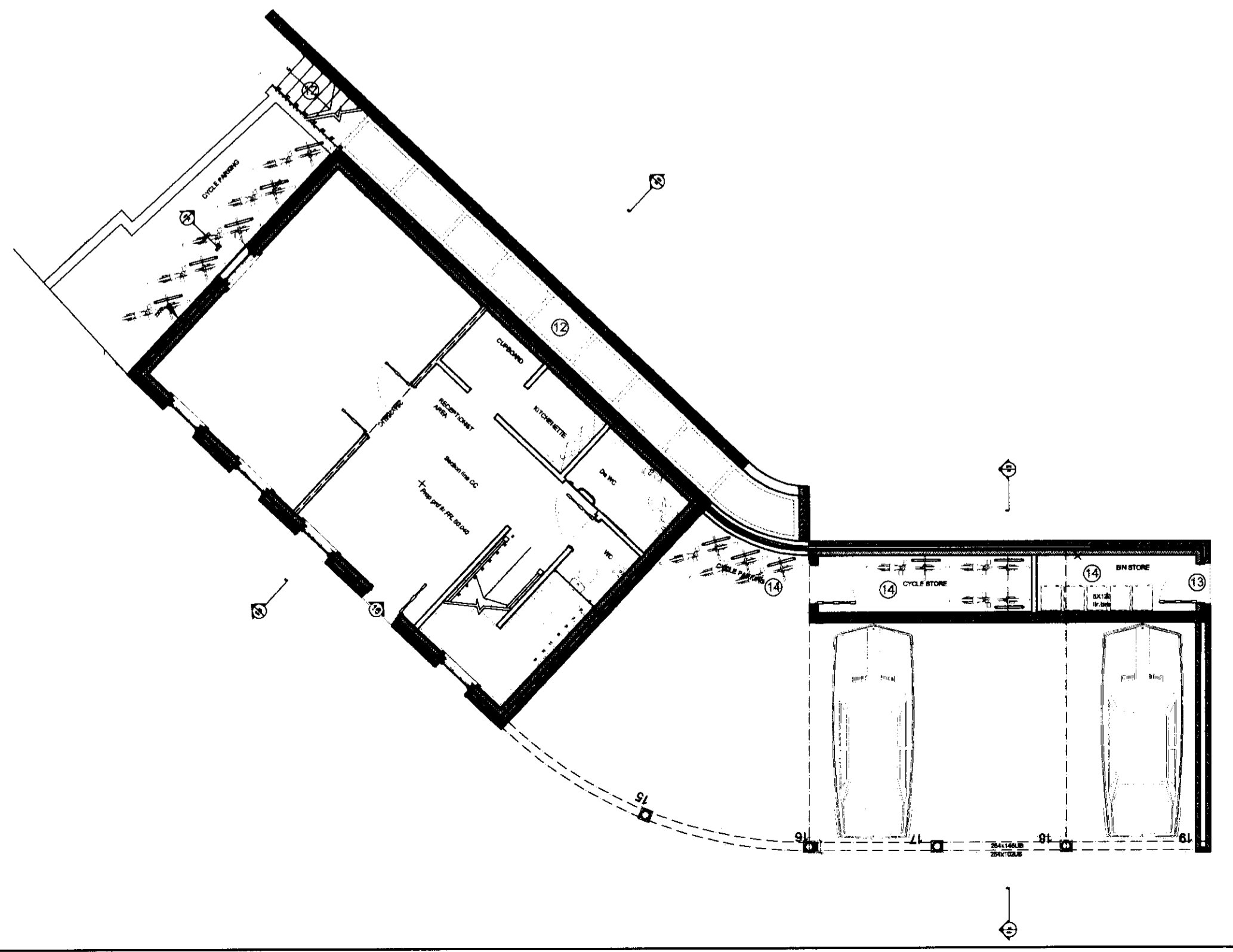
- ① windows replaced with doors
- ② doors added to rear elevation to allow rear access to stores
- ③ staircase lower form revised
- ④ fenestration amended
- ⑤ rear terrace revised
- ⑥ door position moved due to change of 2nd means of escape
- ⑦ storage area revised
- ⑧ door added for 2nd means of escape



FRONT ELEVATION

SECTION DD

SIDE ELEVATION



**UNIT 16**  
USAGE CLASS B1  
219.20m<sup>2</sup>

C Post planning revisions 28.04.09  
Rev amendment Date

**BROOKS / MURRAY**

ARCHITECTS  
8-10 NEW NORTH PLACE  
LONDON EC2A 4AA  
TEL: 020 7730 9955  
FAX: 020 7730 9944  
architects@brooksmurray.com

WELWYN HATFIELD  
PLANNING  
OFFICE COPY  
- 2 JUN 2009  
No: 2009/1123

CLIENT:  
GASCOYNE CECIL ESTATES

JOB:  
DUNHAMS COURTYARD

DATE: Jan 2009 SCALE: A1/A3 1:50 / 1:200

DRAWING TITLE:  
Units 16 & 17

DRAWING NUMBER:  
576-019 Rev C