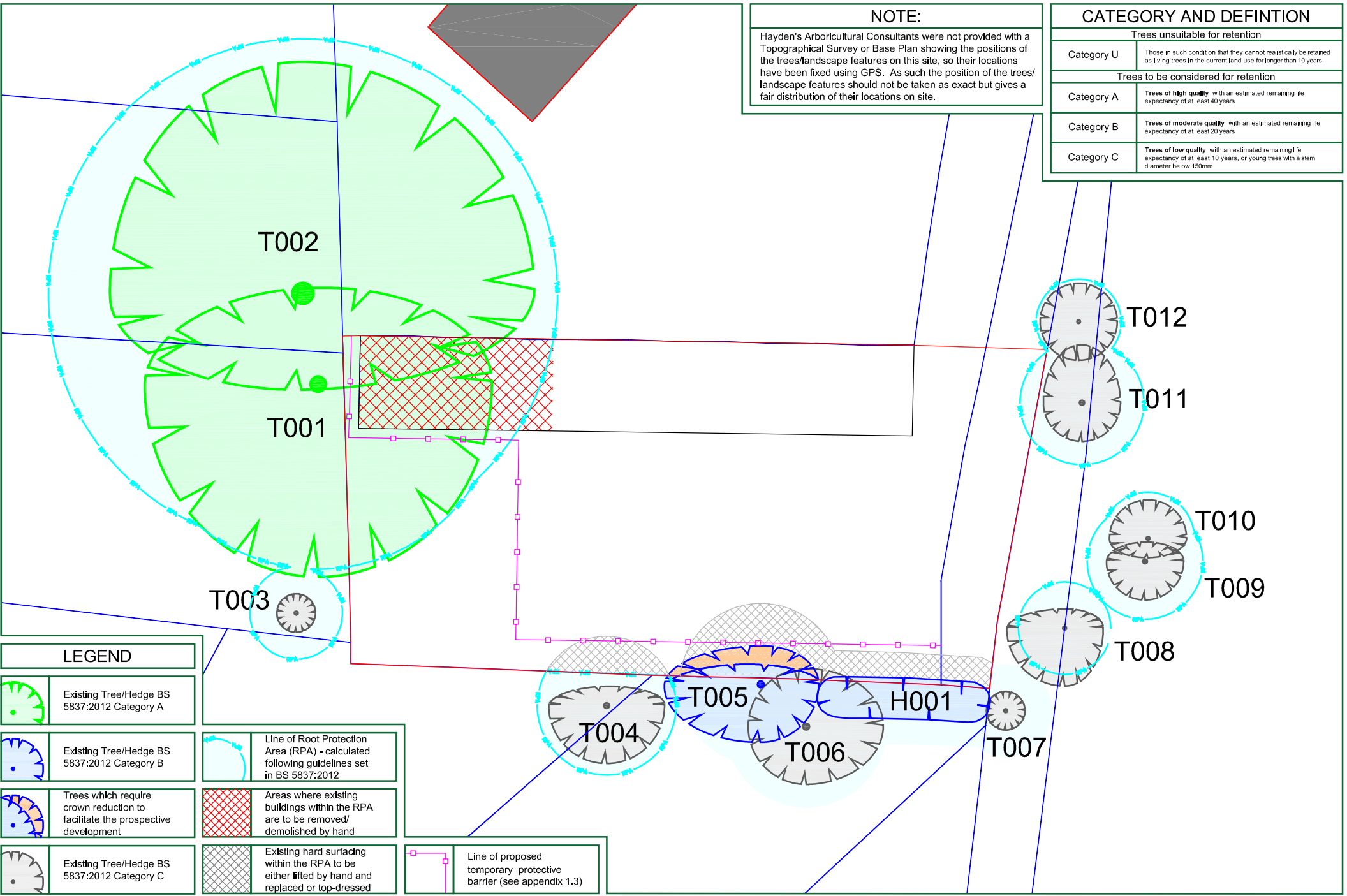
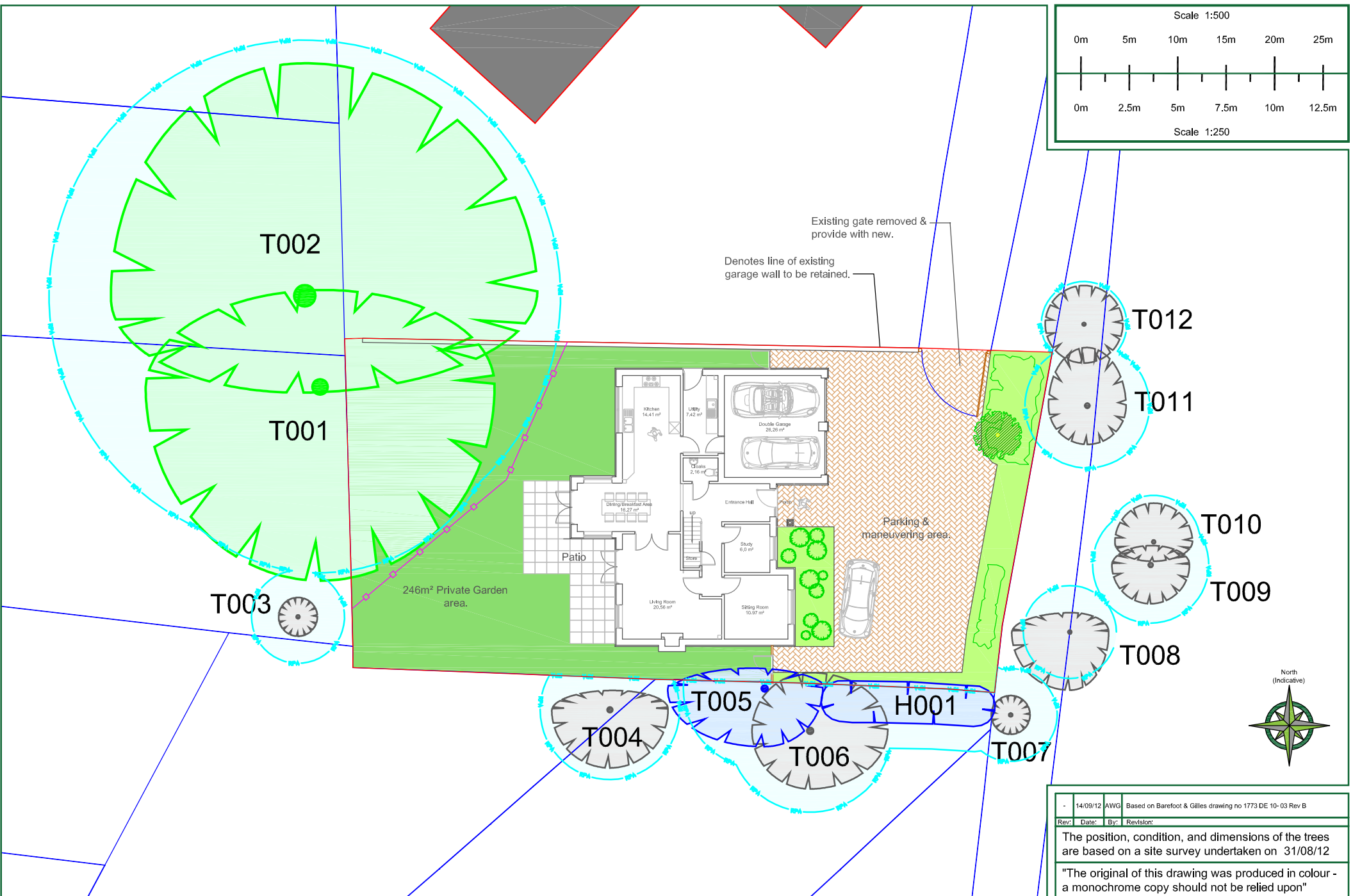
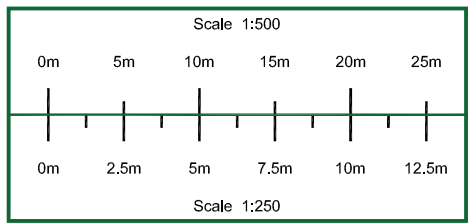


**NOTE:**  
 Hayden's Arboricultural Consultants were not provided with a Topographical Survey or Base Plan showing the positions of the trees/landscape features on this site, so their locations have been fixed using GPS. As such the position of the trees/landscape features should not be taken as exact but gives a fair distribution of their locations on site.

CATEGORY AND DEFINITION	
Trees unsuitable for retention	
Category U	Trees in such condition that they cannot realistically be retained as living trees in the current land use for longer than 10 years
Trees to be considered for retention	
Category A	Trees of high quality with an estimated remaining life expectancy of at least 40 years
Category B	Trees of moderate quality with an estimated remaining life expectancy of at least 20 years
Category C	Trees of low quality with an estimated remaining life expectancy of at least 10 years, or young trees with a stem diameter below 150mm



LEGEND	
	Existing Tree/Hedge BS 5837:2012 Category A
	Existing Tree/Hedge BS 5837:2012 Category B
	Trees which require crown reduction to facilitate the prospective development
	Existing Tree/Hedge BS 5837:2012 Category C
	Line of Root Protection Area (RPA) - calculated following guidelines set in BS 5837:2012
	Areas where existing buildings within the RPA are to be removed/ demolished by hand
	Existing hard surfacing within the RPA to be either lifted by hand and replaced or top-dressed
	Line of proposed temporary protective barrier (see appendix 1.3)



14/09/12	AWG	Based on Barefoot & Gilles drawing no 1773 DE 10-03 Rev B
Rev:	Date:	By: Revision:
The position, condition, and dimensions of the trees are based on a site survey undertaken on 31/08/12		
"The original of this drawing was produced in colour - a monochrome copy should not be relied upon"		



5 Moseleys Farm Business Centre  
 Fornham All Saints  
 Bury St Edmunds  
 Suffolk, IP28 6JY  
 Tel: 01284 765391  
 Fax: 01284 765181  
 Mobile: 07850 167400  
 © HAYDEN'S 2012  
 Email: info@treesurveys.co.uk  
 Web Page: www.treesurveys.co.uk

Client: DPS Software  
 Site: Lambs Close, Cuffley  
 CAD File Ref: C:\i\Pro\3178-D-LambsCl-TS&AIA.dwg

Drawing No:	3178-D	Drawn By:	AWG
Drawing Title:	TS & AIA	Checked By:	DC
Date:	14/09/12	Scale:	1:250 @ A3
		REV:	-

Do Not Scale