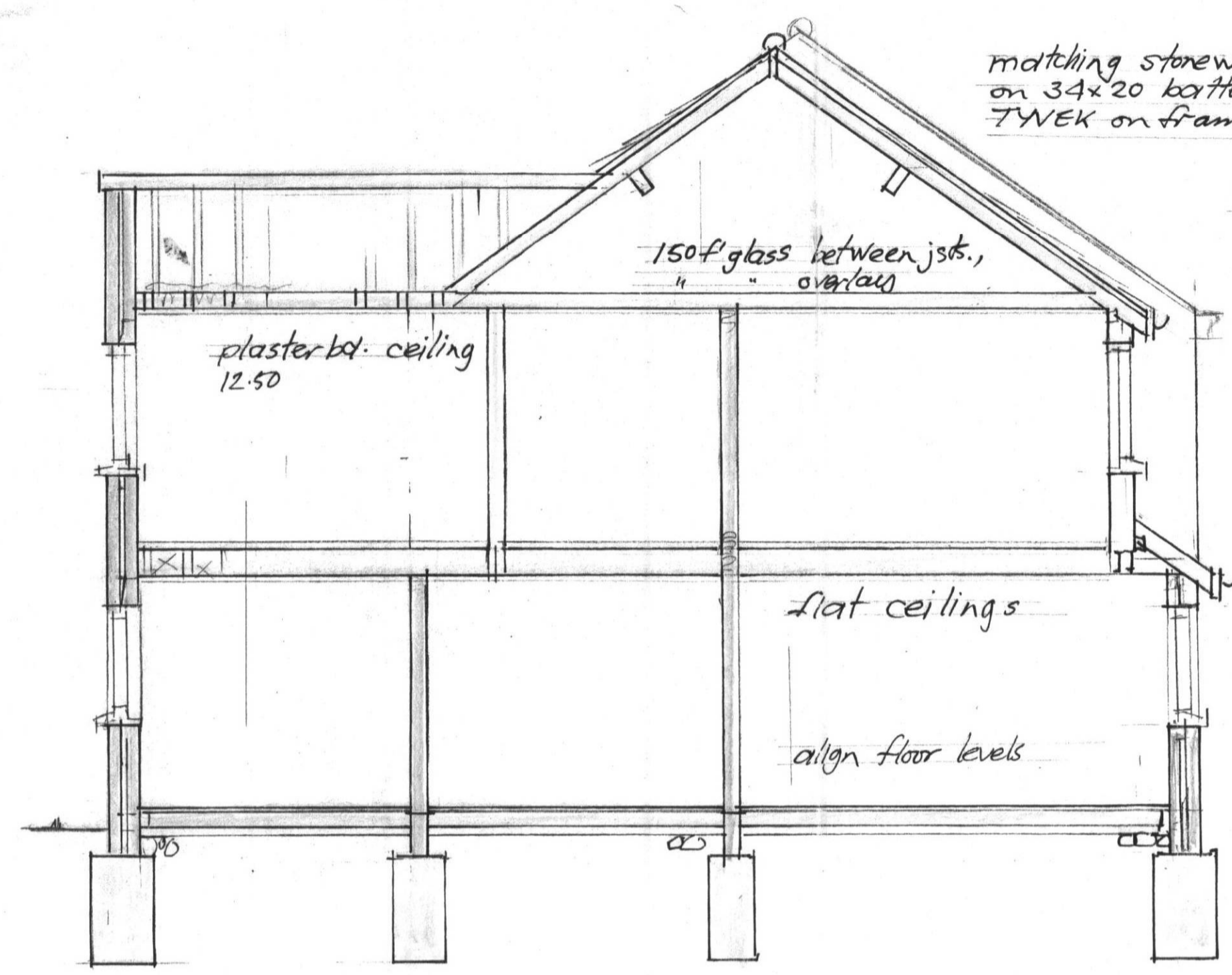
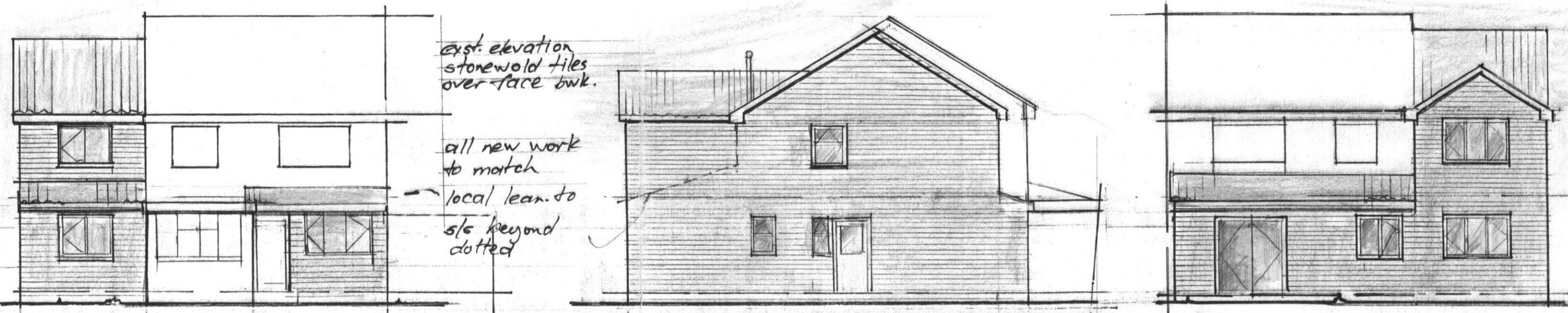


1 & 2 STOREY EXTENSION at 2, De HAVILLAND CLOSE, HATFIELD.

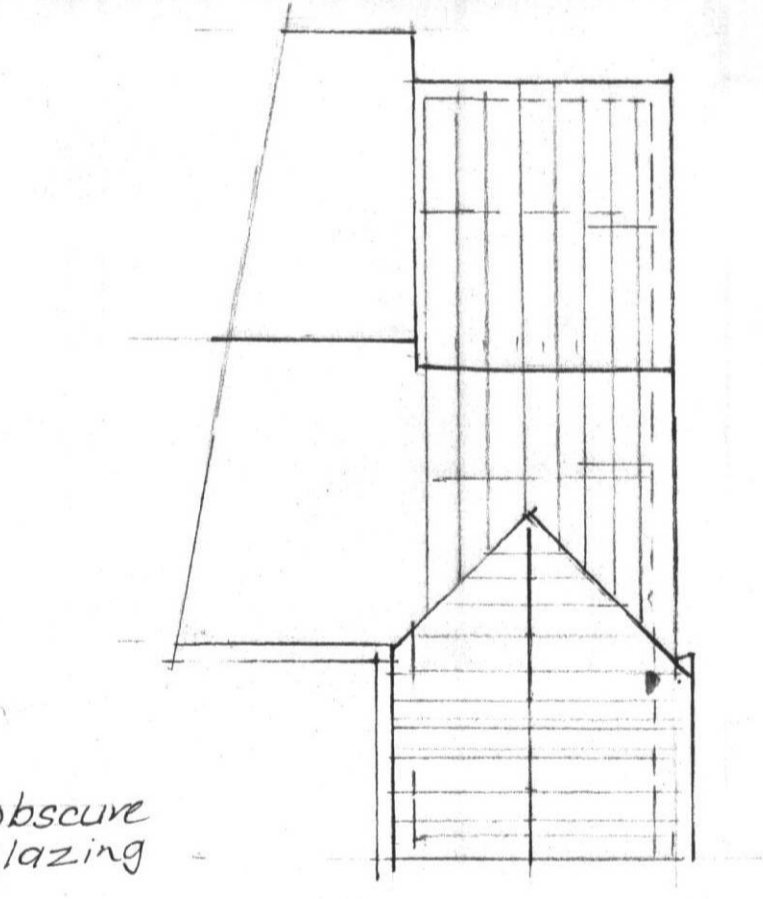
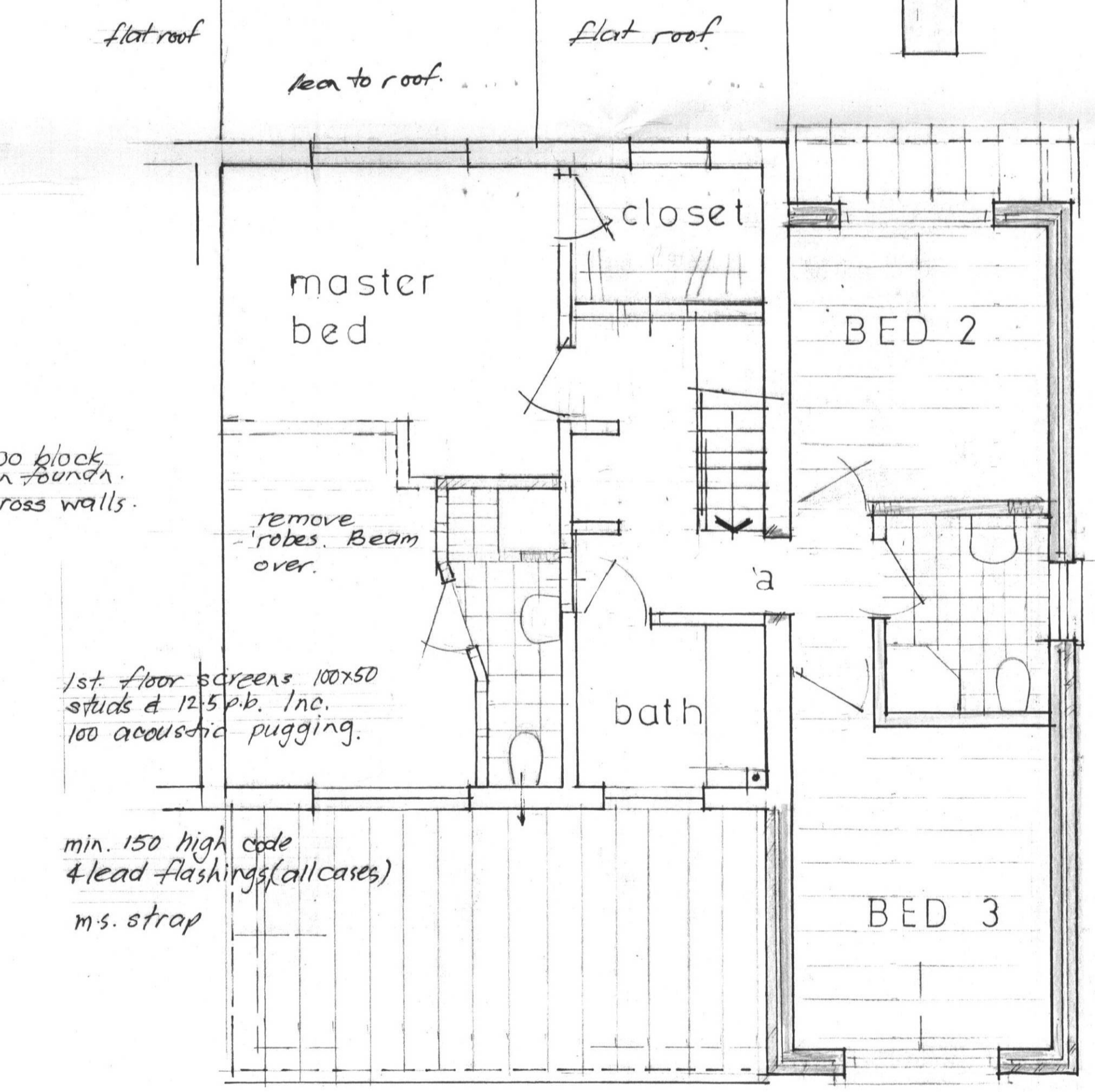
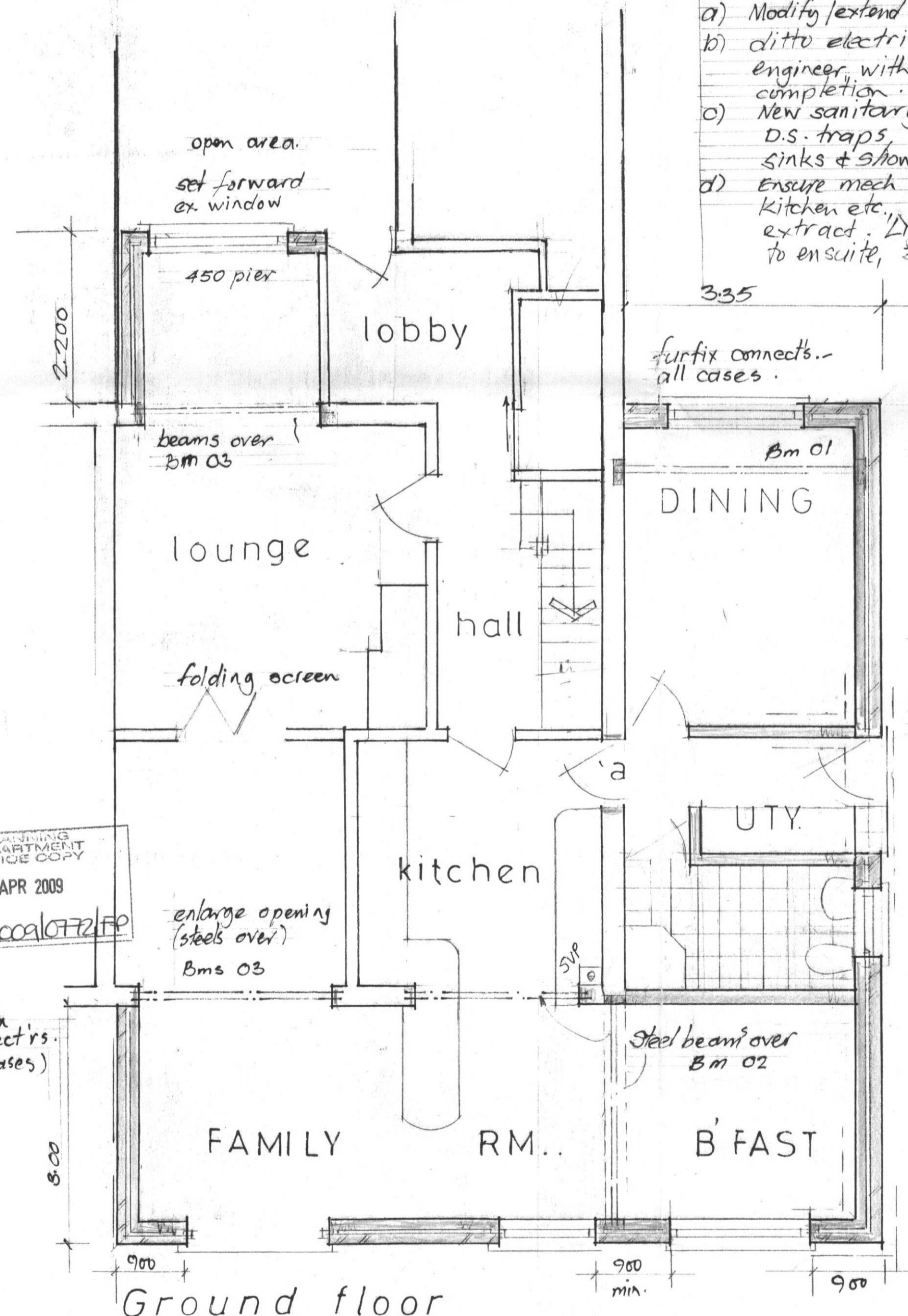
Scales 1:100 & 1:50 March '09 MR SHADI AL SAWAN



matching storewold tiles on 34x20 battens on TWK on framing as plan.
 Code 4 lead weathering at abutment
 100 pvc gutter on 20x50 c/c Cathnic or eq. lintel
 feature tile as main bldg
 Astas dpc 150 above paving
 foudns as note 3'

Services.
 a) Modify extend heating as reqd.
 b) ditto electrics, all by compet't. engineer, with Certificate on completion.
 c) New sanitary fittings - 75 D.S. traps, 38Ø waste to sinks & showers, 32Ø to Lhrs.
 d) Ensure mech vent to baths kitchen etc. giving coll/sec. extract. Light switch operat'd to ensuite, 30 mins. over run.

all new openings d-glazed use Low E glass, (doors & side lights toughened) Windows to give 1/2 floor area with 8000 mm² trickle vents.
 1st floor BEDS to have opening light 0.33 m² as note.



Section.

outline Specification.

- All work to L.A. approval, & current BSS or Cof P. where relevant.
- Any drains beneath bldg. cased concrete, & with relieving lintels where underpassing walls etc.
- Foundations 1:2:4 trench fill concrete, 450 wide by 900 thick, taken down to firm bearing, 1.200 min, or as noted.
- Floor slab G5 c/s screed on 150 conc. on 100 jable jable turned up at outer edge on 1.200 polyd.p.m on blinded h'core (U=0.22 w/m²k)
- Walls 102 face b/wk, 75 cavity with ditto Dritherm 32, & 100 Celcon solar block. Cathnic or eq. lintels, st. steel ties @ standard spacing & thermabate cavity closures (U=0.30 w/m²k)
- Structural timber stress graded C 24, with any doubled members bolted M12 @ 600 c/c's.
- Any downstand steel bms. cased 12.5 fireline p.b. & skim.
- Provide smoke alarm to hall & landing, interlinked & wired to elec. circuit, battery back up

PLANNING DEPARTMENT OFFICE COPY
 15 APR 2009
 NO. S. 020010772/FP