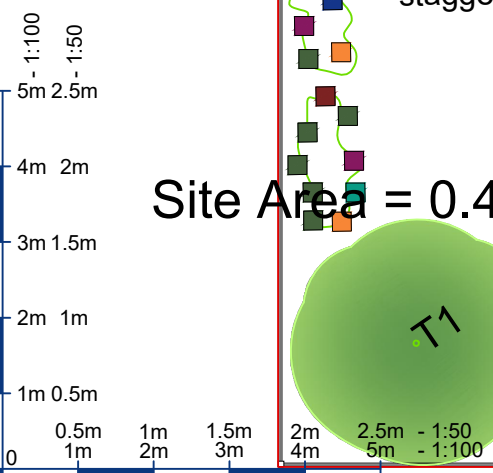
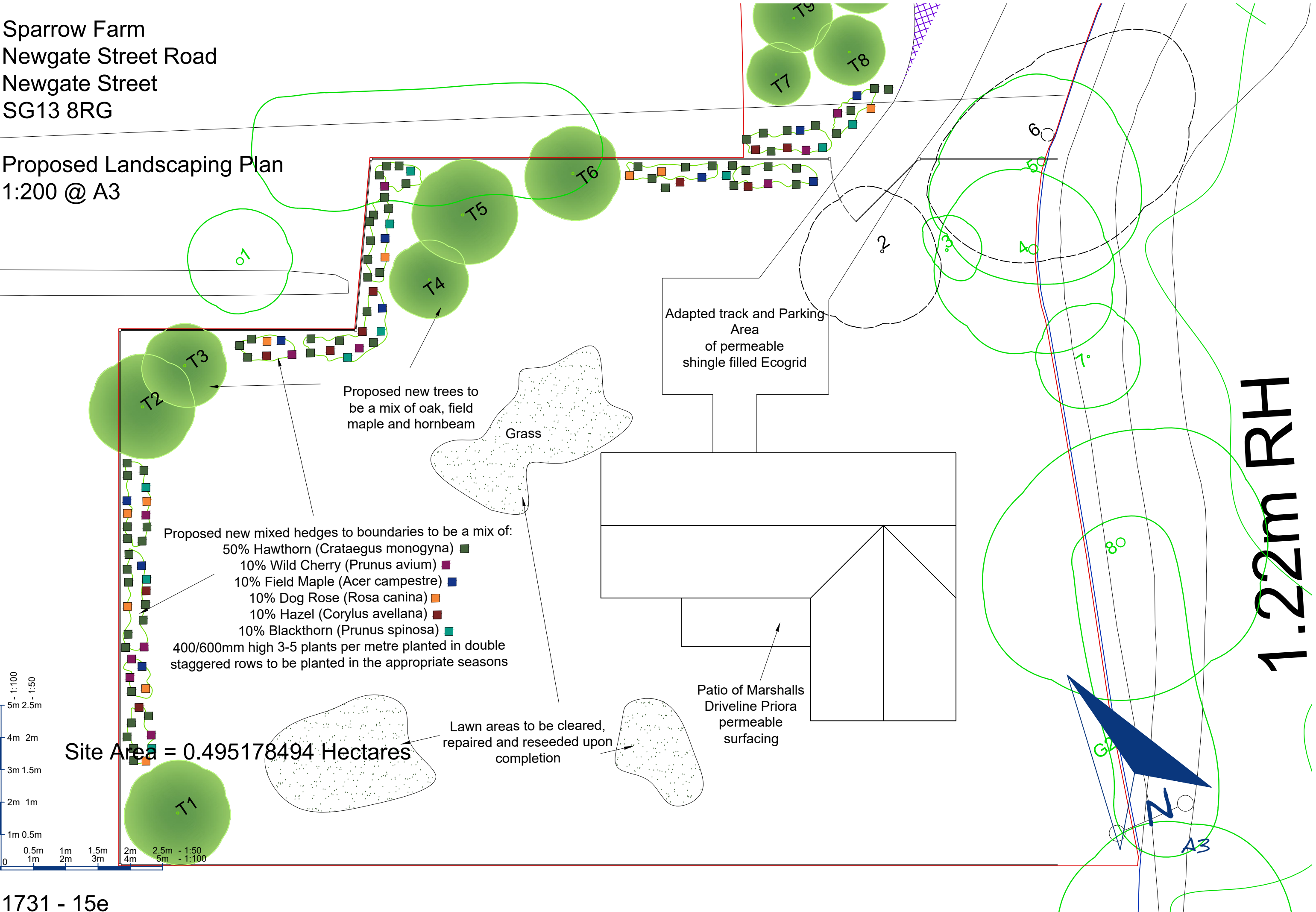


Sparrow Farm
 Newgate Street Road
 Newgate Street
 SG13 8RG

Proposed Landscaping Plan
 1:200 @ A3



Site Area = 0.495178494 Hectares

- Proposed new mixed hedges to boundaries to be a mix of:
- 50% Hawthorn (*Crataegus monogyna*) ■
 - 10% Wild Cherry (*Prunus avium*) ■
 - 10% Field Maple (*Acer campestre*) ■
 - 10% Dog Rose (*Rosa canina*) ■
 - 10% Hazel (*Corylus avellana*) ■
 - 10% Blackthorn (*Prunus spinosa*) ■
- 400/600mm high 3-5 plants per metre planted in double staggered rows to be planted in the appropriate seasons

Adapted track and Parking Area of permeable shingle filled Ecogrid

Grass

Patio of Marshall's Driveline Priora permeable surfacing

Lawn areas to be cleared, repaired and reseeded upon completion

1.22m RH