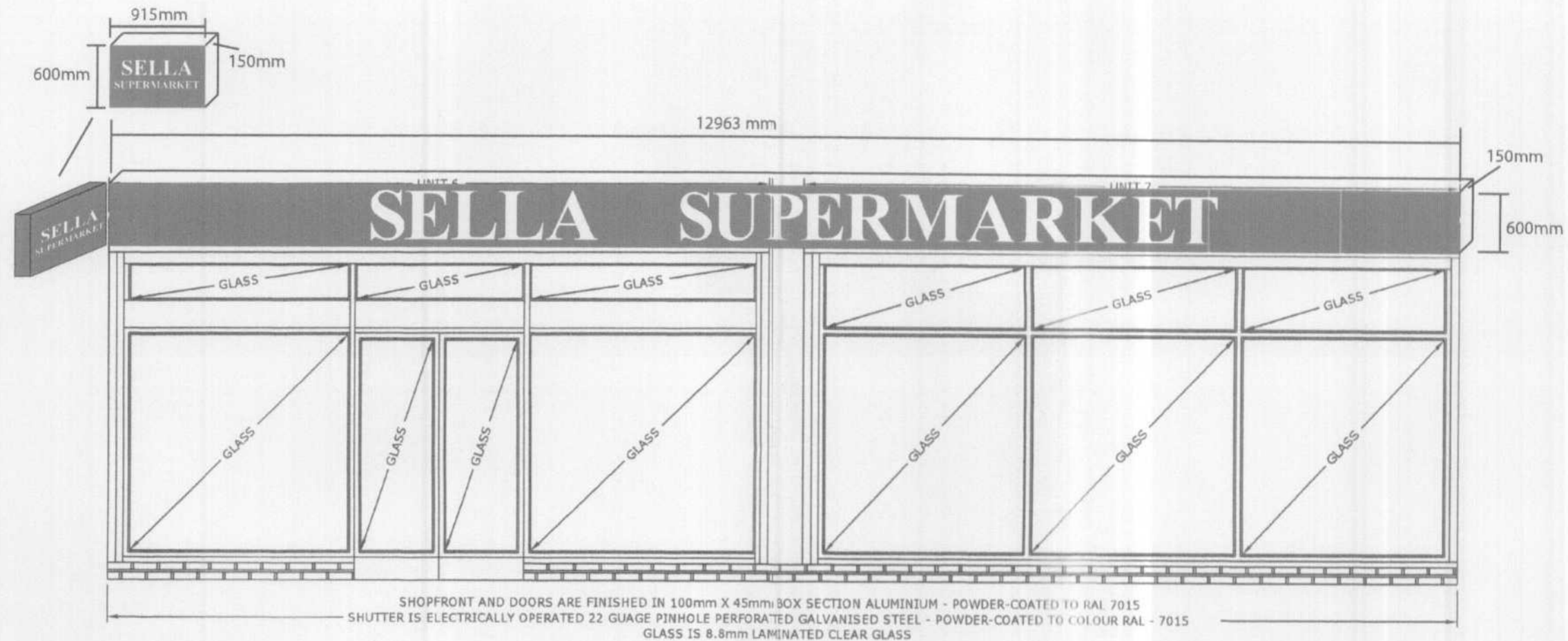


Illuminated double sided projection sign (915x600x150mm)

Lit with 48w Fluorescent tubes

Neg cut Blue Vinyl, White lettering. Lettering height is **135mm & 63mm** Other details as below.

PLANNING
DEPARTMENT
OFFICE COPY
- 7 DEC 2007
NO: 86/2007/1887/AD



Fascia structure is an Adonised Aluminium box, dimensions 12963mm x 600mm x 150mm

Illuminated by 58w Fluorescent tubes

Opal 050 ICI Acrylic panel to face of box

Neg cut in blue 700 Avery vinyl with letters in White. Letter height is 488mm. Number of letters: 16 on main fascia, 32 on projection sign (double sided).

Approx. 2.4m from ground.

Electrics to be installed by qualified electrician

Main system installed with anti-rusting self cutting screw/bolt

All products supplied meet specific regulations backed by ISO 9002

All products used are fully waterproof

Scale: 1:50