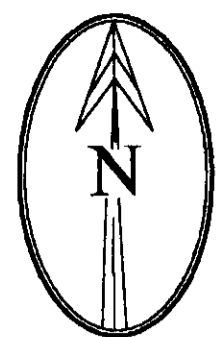
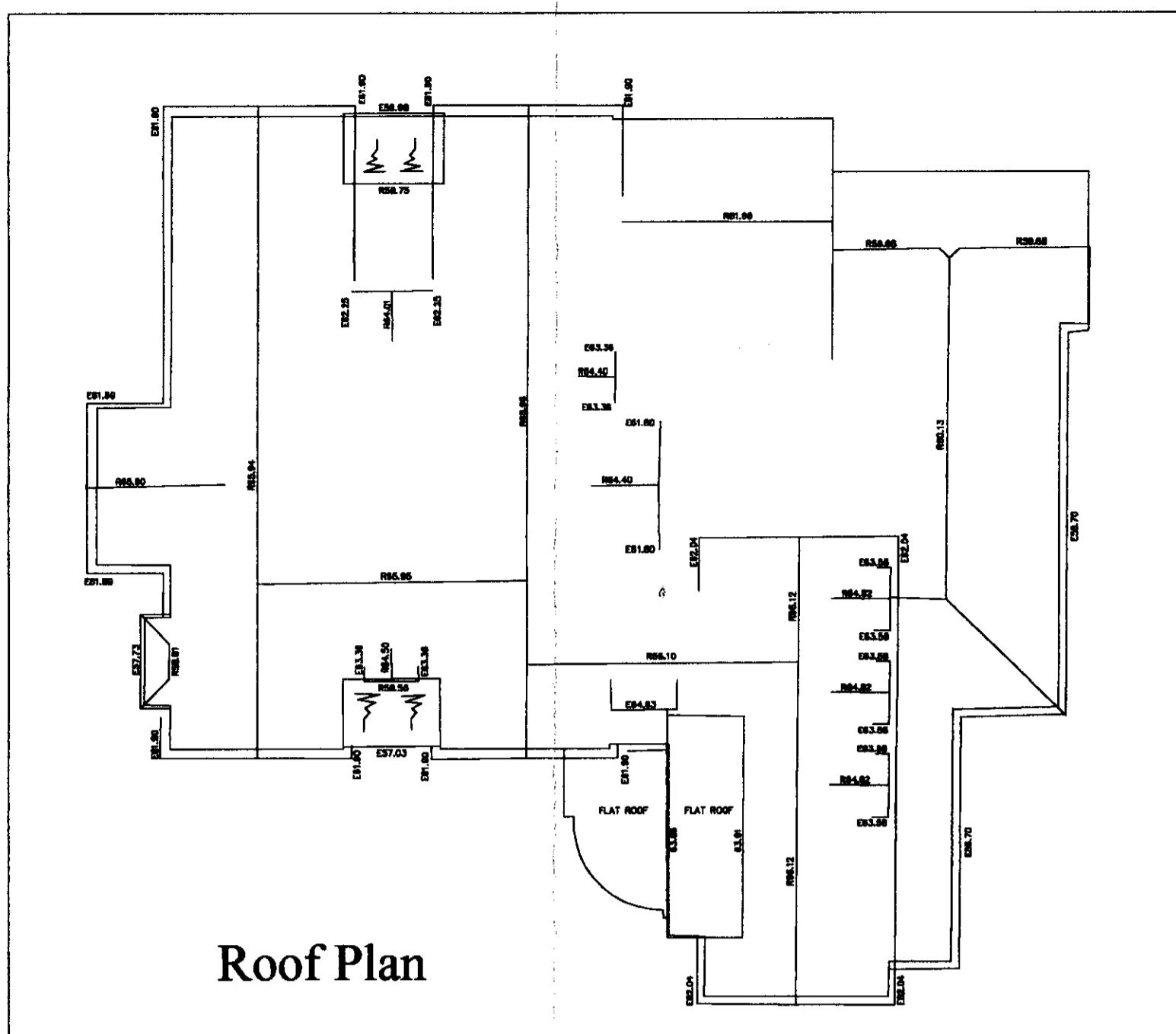


Notes: -



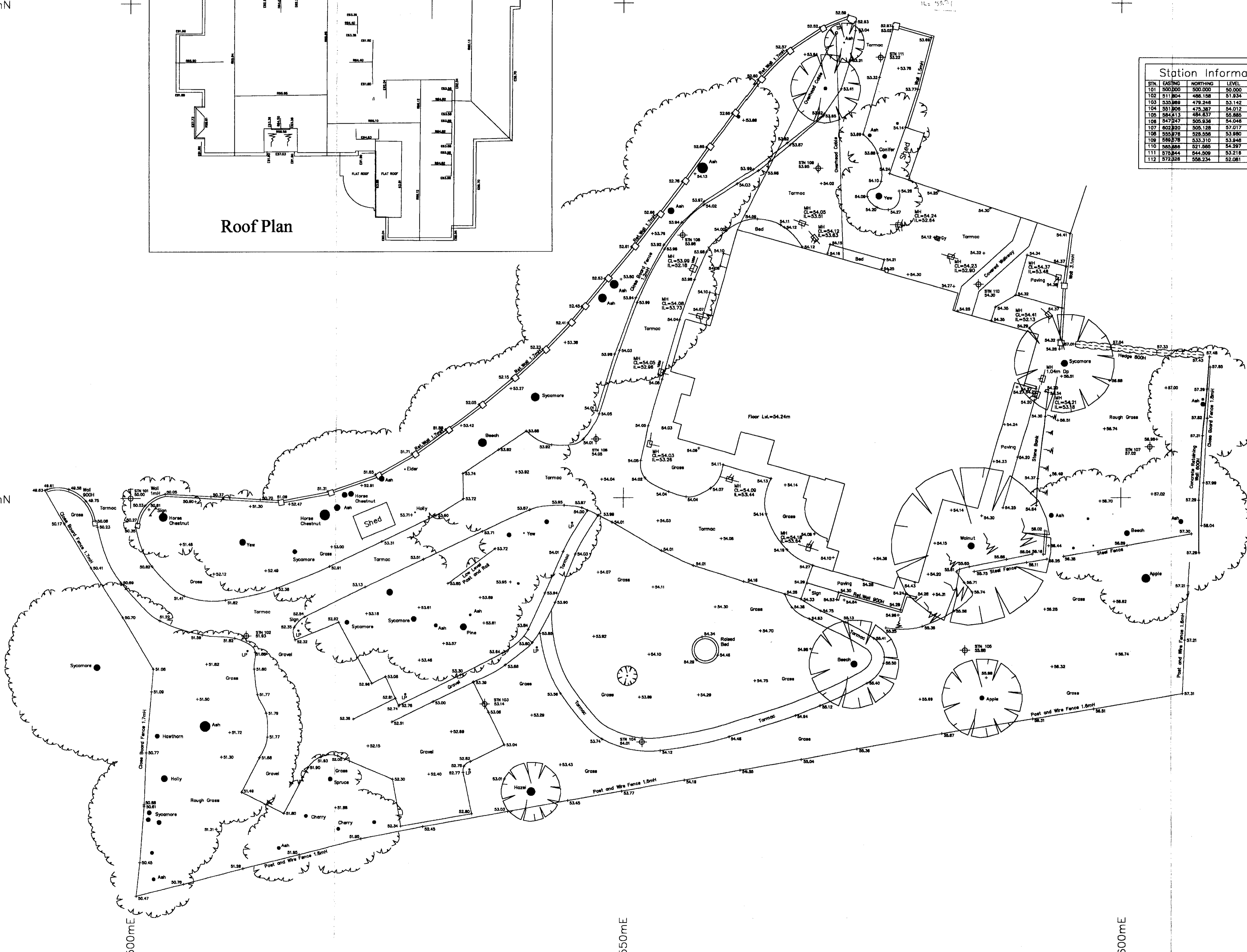
550mN



Roof Plan

Station Information				
STN.	EASTING	NORTHING	LEVEL	DESC.
101	500.000	500.000	50.000	HILTI NAIL
102	511.824	486.108	51.834	HILTI NAIL
103	533.869	479.248	53.142	HILTI NAIL
104	551.806	475.387	54.012	HILTI NAIL
105	564.413	464.837	55.865	PEG
106	547.247	505.636	54.046	HILTI NAIL
107	602.820	505.128	57.017	PEG
108	550.878	529.556	53.980	HILTI NAIL
109	585.578	533.310	53.940	HILTI NAIL
110	565.868	521.585	54.297	HILTI NAIL
111	575.844	544.509	53.216	HILTI NAIL
112	572.528	558.234	52.081	HILTI NAIL

500mN



500mE

550mE

600mE

TO BE READ IN CONJUNCTION WITH: -

2006265

ISSUE REVISION DATE

CHILTERN SURVEYS Ltd.
 LAND SURVEYS AND SITE ENGINEERING SERVICES
 Spurway Mill, Oakford, Tiverton, Devon. EX16 9EY
 Tel: 01398 351277 Fax: 01398 351533 Mobile: 07932 650676
 E-mail: chilternsurvey@tiscali.co.uk

TITLE: -
Site Survey

PROJECT: -
 St. Audrey's
 Hatfield
 Herts.

SCALE: - 1:200
 DRAWN: - J.W.
 DWG. No. HATF0701
 DATE: - 10:12:07

GENERAL NOTES: -
 ALL LEVELS RELATE TO TBM SITUATED ON STATION 101.
 ASSUMED VALUE=50.000m.
 GRID IS LOCAL AND ARBITRARY