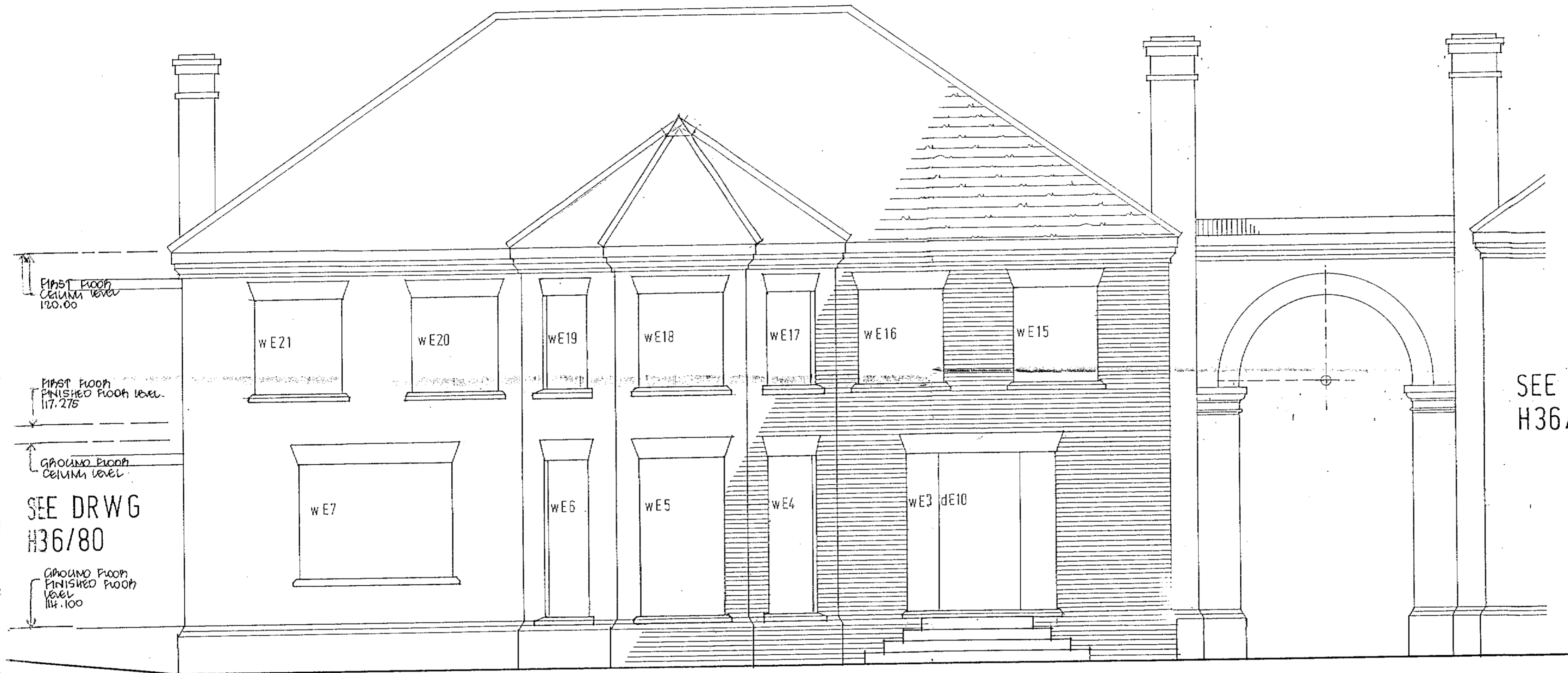
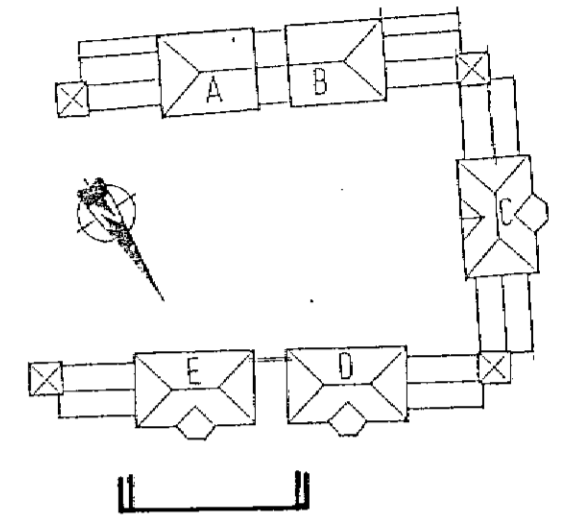


© Hitchins (Hatfield) Ltd 1987  
 This document and its information is supplied without liability for errors or omissions and no part may be reproduced, used or disclosed except as authorised by contract or other written permission.  
 Do not scale from this drawing. Architects to be notified of any discrepancies.  
 Verify relevant details and dimensions at the job before commencing work or preparing shop drawings.  
 Any works shall comply with Building Regulations, Service Authorities and relevant Codes of Practices.  
 All products to be applied or installed in strict accordance with Manufacturer's printed detail.  
 No site variation will be permitted without written confirmation from Head Office.



FIRST FLOOR  
CEILING LEVEL  
120.00

FIRST FLOOR  
FINISHED FLOOR LEVEL  
117.275

GROUND FLOOR  
CEILING LEVEL

SEE DRWG  
H36/80

GROUND FLOOR  
FINISHED FLOOR  
LEVEL  
114.100

SEE DRWG  
H36/82

PRELIMINARY 22.9.87

REVISION	DATE	DETAILS	DATE	REV. BY
PREPARED/CHECKED BY				
PROJECT <b>NORTHAW PLACE</b>				
DRAWING TITLE <b>BLOCK E part north elevation</b>				
<b>HITCHINS</b>				
ESSENDON HERFORDSHIRE AL3 6AT TEL. HATFIELD (0475) 21511 TELEX 8272 FAX GROUP 2 AND 3 (01923) 73003				
SCALE	DRAWING NO.			REVISION
1:50	H36/81			