

© Hitchins (Hatfield) Ltd 1987

This document and its information is supplied without liability for errors or omissions and no part may be reproduced, used or disclosed except as authorised by contract or other written permission.

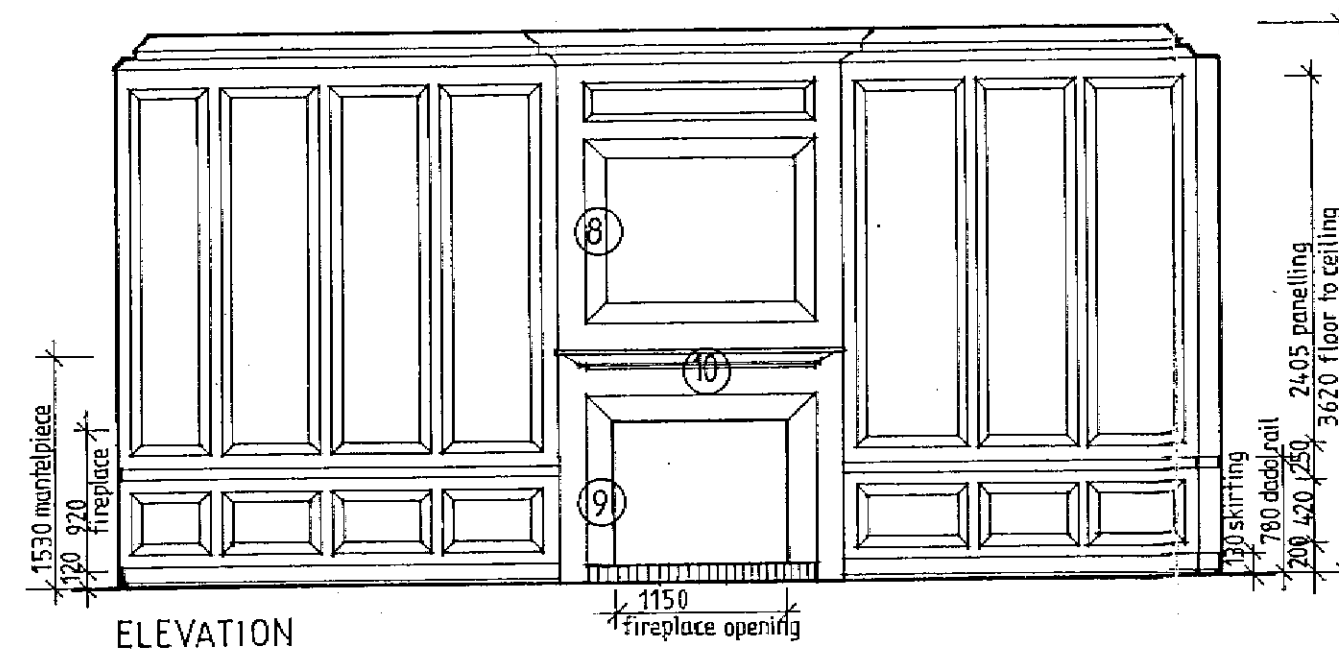
Do not scale from this drawing. Architects to be notified of any discrepancies.

Verify relevant details and dimensions at the job before commencing work or preparing shop drawings.

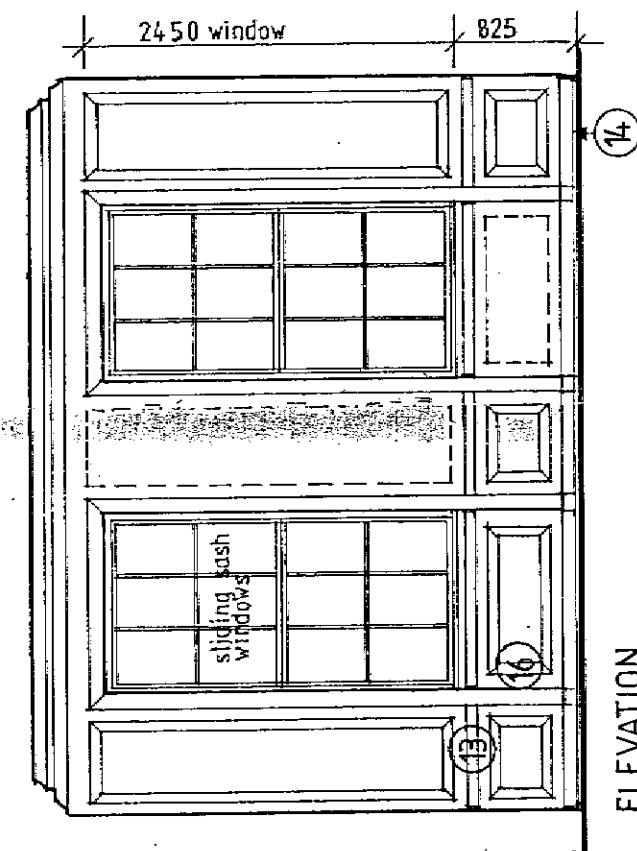
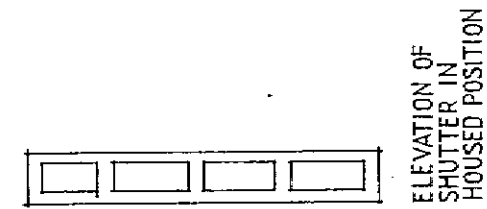
Any works shall comply with Building Regulations, Service Authorities and relevant Codes of Practices.

All products to be applied or installed in strict accordance with Manufacturer's printed detail.

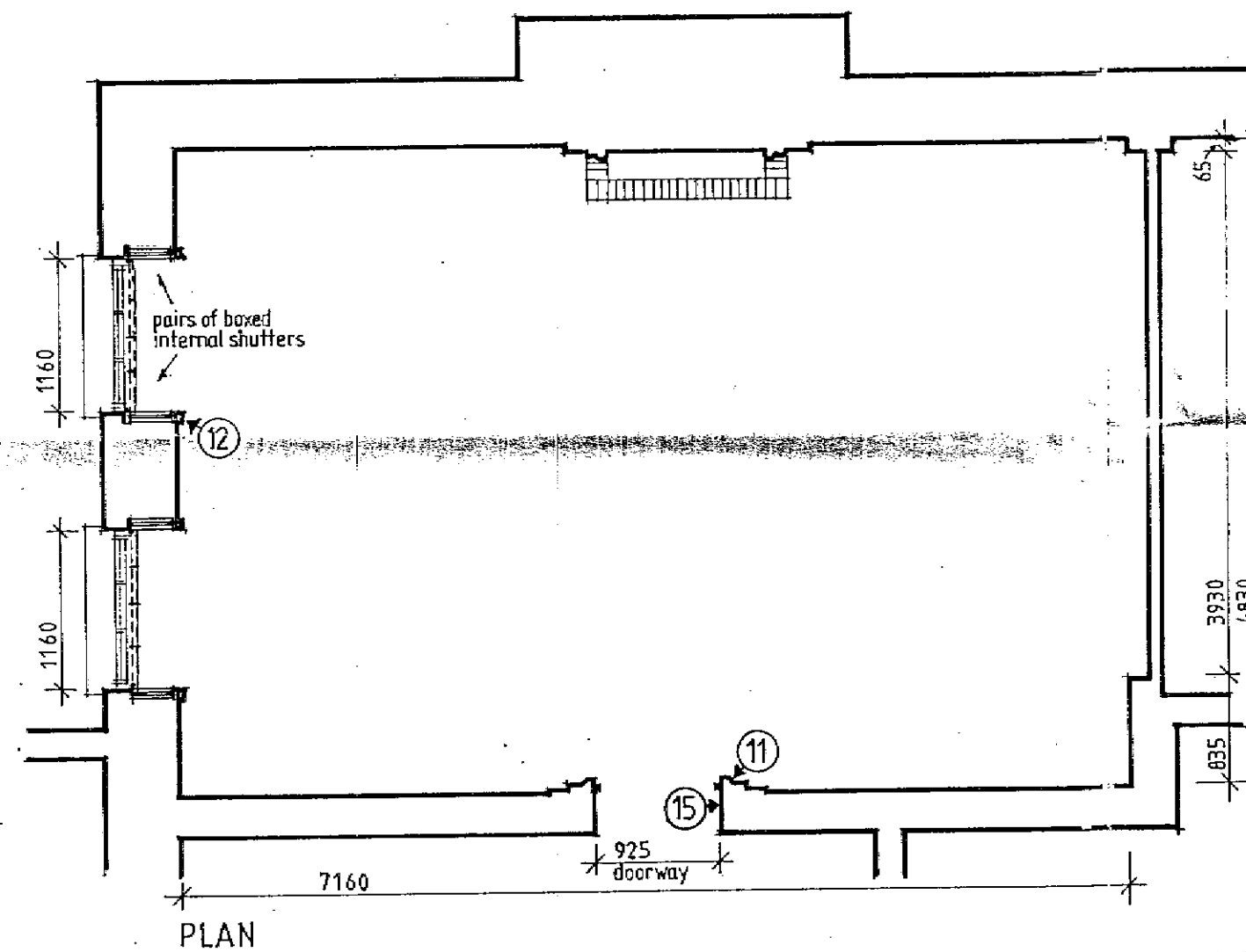
No site variation will be permitted without written confirmation from Head Office.



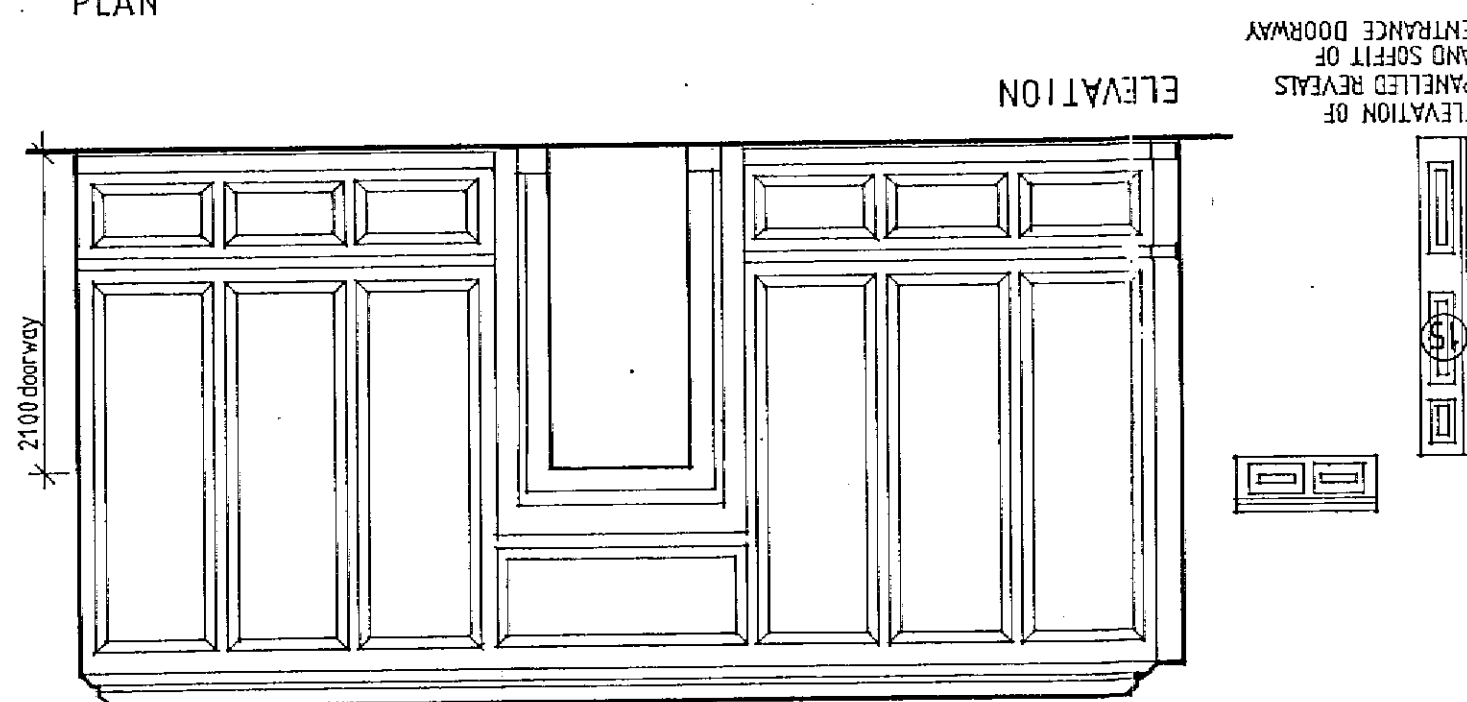
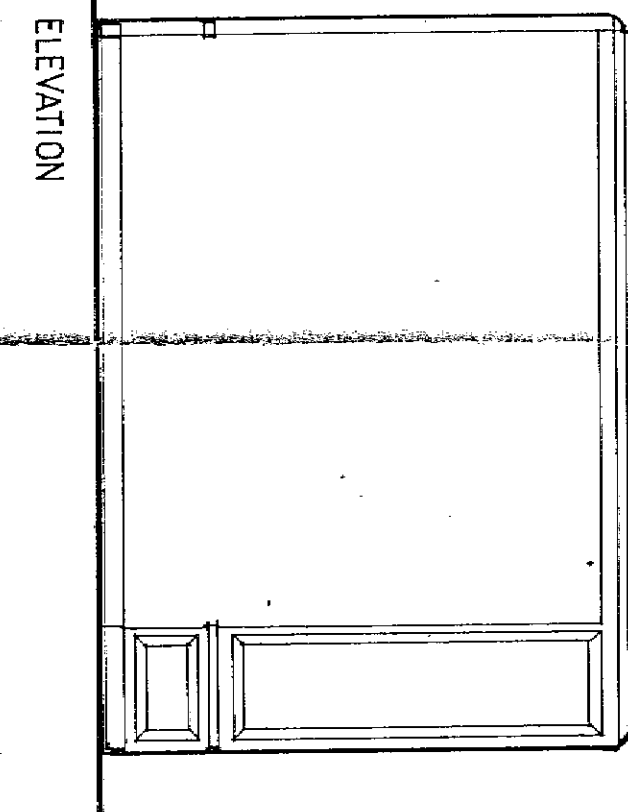
ELEVATION



ELEVATION



PLAN



ELEVATION

DINING ROOM ON GROUND FLOOR

circled numbers refer to full-size details on separate drawing.

REVISION	DATE	DETAILS	REV. BY
PREPARED/CHECKED BY	THOS. A. FOX. MBIAT.		DATE JULY 1987
PROJECT			
NORTHAW PLACE, NORTHAW, HERTFORDSHIRE,			
DRAWING TITLE			
HOUSE 1, DINING ROOM AS EXISTING.			
HITCHINS			
ESSENDON HERTFORDSHIRE AL9 6AT TEL. HATFIELD (07072) 71111 TELEX 28222 FAX GROUP 2 AND 3 (07072) 73003			
SCALE	DRAWING No.	REVISION	
1:50	H16/16		