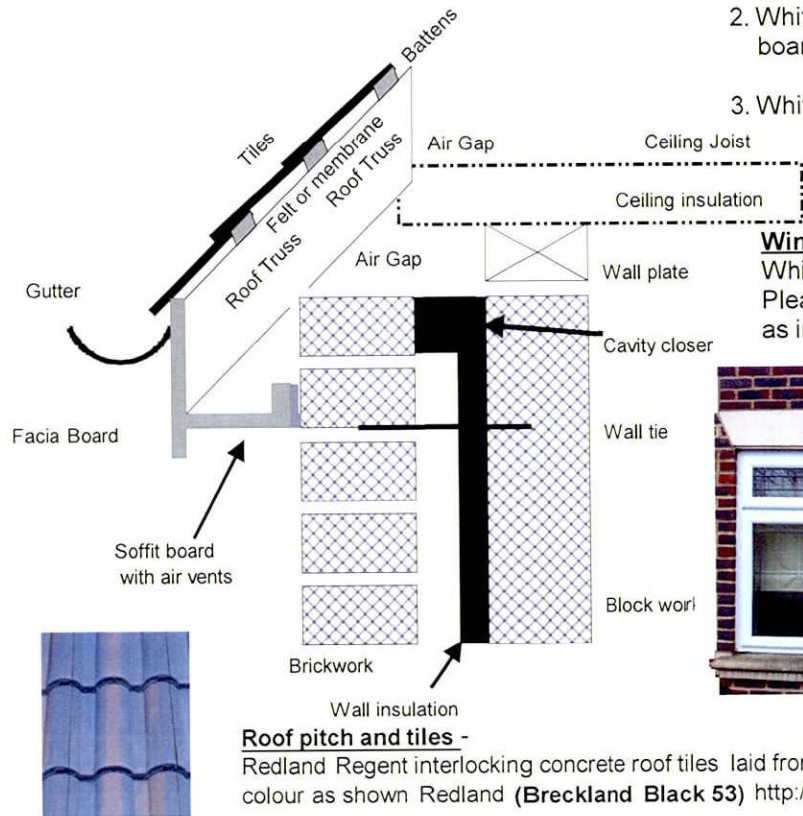


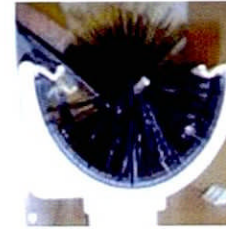
Roof overhang / Gutter Details



Roof pitch and tiles -

Redland Regent interlocking concrete roof tiles laid from 12.5° through to 35° roof is actually 26.5° - colour as shown Redland (**Breckland Black 53**) <http://www.monier.co.uk>

1. 112 mm half round gutter with hedgehog leaf guard
2. White UPVC fascia board & vented soffits
3. White UPVC down pipes



Brickwork Detail - red RUSTICO brick to all elevations **close up**

Window details

White uPvc windows with internal leading to all windows. Please note brickwork around windows is RUSTICO as in brickwork detail to right - shading is light effects.



Windows details - Header

Stone effect concrete headers with Key Stones to all windows wider than 1m - same style but No key stones for windows less than 1m width

Window Details -Cills

Stone effect profiled concrete Cills to all windows

D11 - Detail - Roof - Gutter - Brickwork
Land Adjacent to flats 37-42 Lambs Close
Cuffley

Project Designer:	
OMI	
Project Contact:	
Scale None	
Project #	WO#
1.2	
Date:	Rev. Date:
07/02/2011	

-2011/0413

-4 MAR 2011